



El Dorado County is one of the original 27 counties into which the state of California was divided at its organization and admission to the union in 1850.

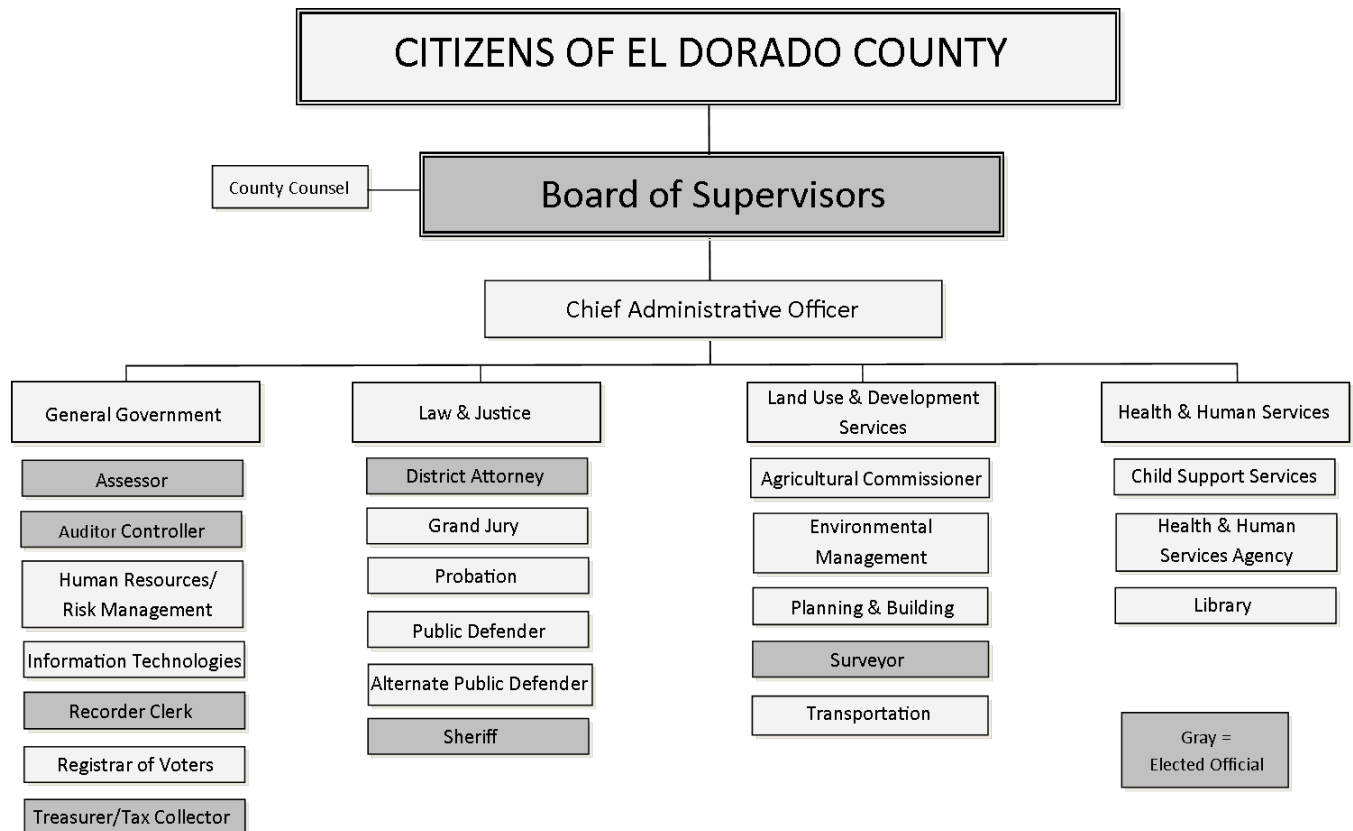
Under the California state constitution, **counties are required to provide health care, welfare, and criminal justice programs**, and enforce state and federal laws as applicable.

These services are provided to all residents within the county’s jurisdiction. In addition, El Dorado County provides regional services such as libraries, parks and recreation, performing arts facilities, weights and measures inspection, and pesticide regulation.

Two incorporated cities are located within El Dorado County: Placerville and South Lake Tahoe. The County also provides municipal services such as building inspection and road maintenance for residents of unincorporated areas.

COUNTY ORGANIZATION

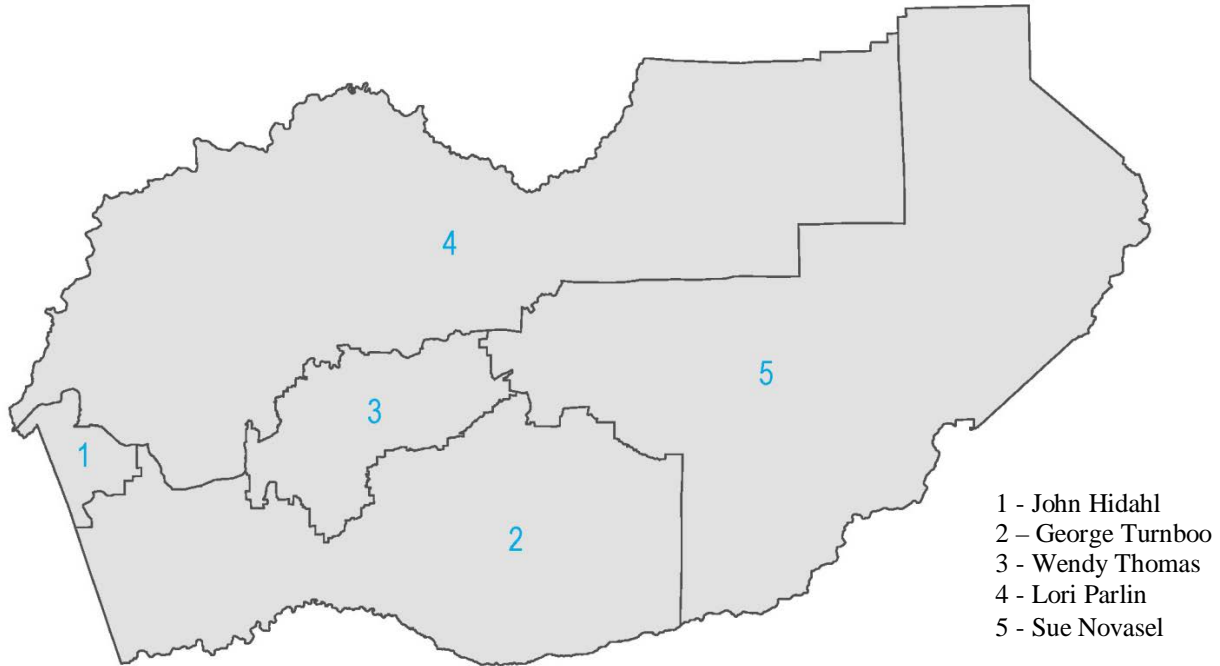
The County is divided into four functional areas that represent services to residents. El Dorado is one of 14 California counties that operate under a charter, allowing the County a limited degree of control over the number and duties of the governing board and some officials. A majority of the department directors are appointed by the Board of Supervisors, while other officials are elected to serve a four-year term.



Gray = Elected Official

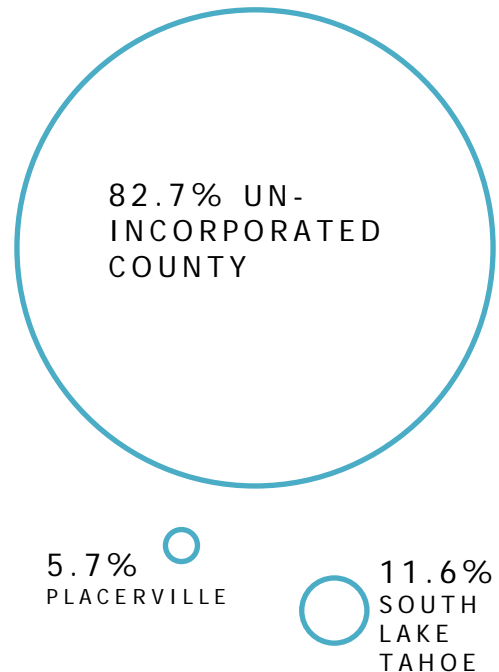
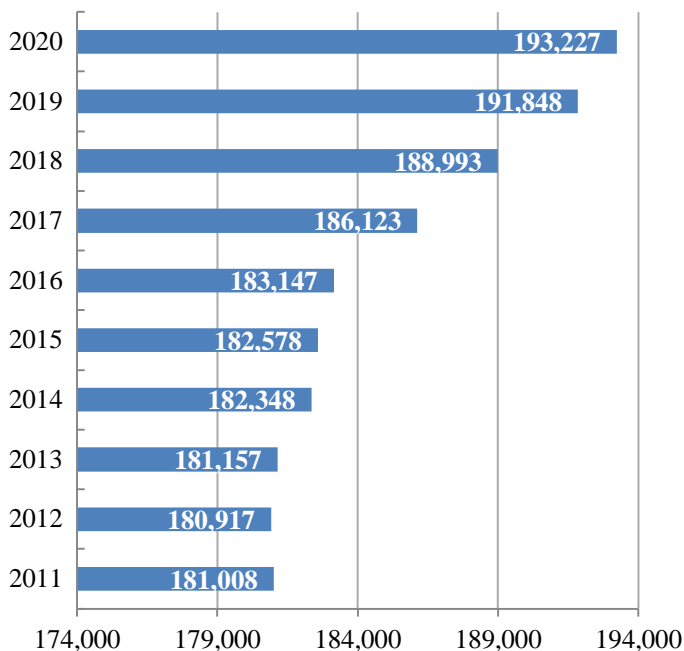
BOARD OF SUPERVISORS

The Board of Supervisors has authority to perform all the duties vested in it by the Constitution, general law, and the charter. The Board of Supervisors appoints the Chief Administrative Officer, members of boards and commissions, and nonelected department heads. The Board of Supervisors is comprised of five members, one elected from each County district.



TOTAL POPULATION

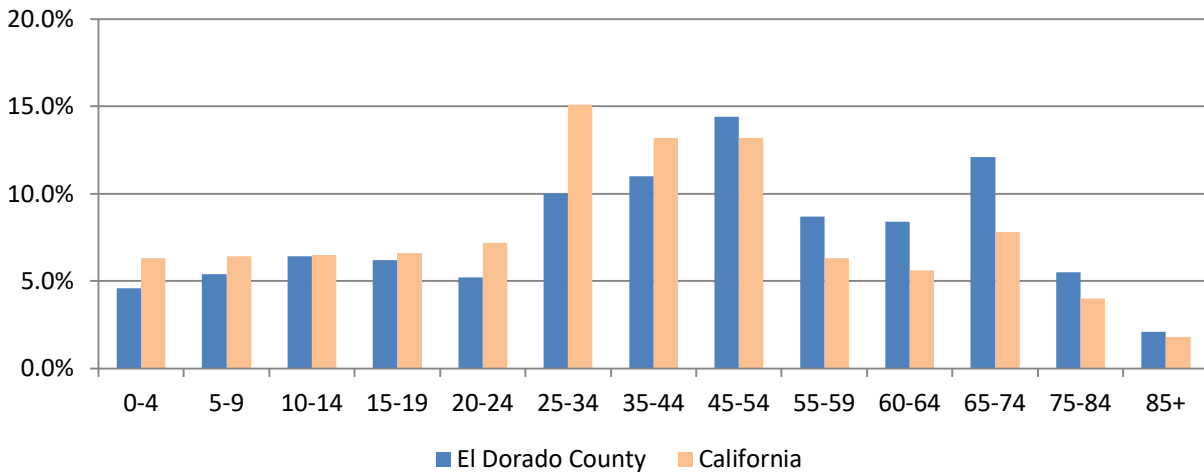
Over the last 10-year period, El Dorado County grew 6 percent. The majority of El Dorado County citizens (159,722) reside outside of the two incorporated cities of Placerville and South Lake Tahoe.



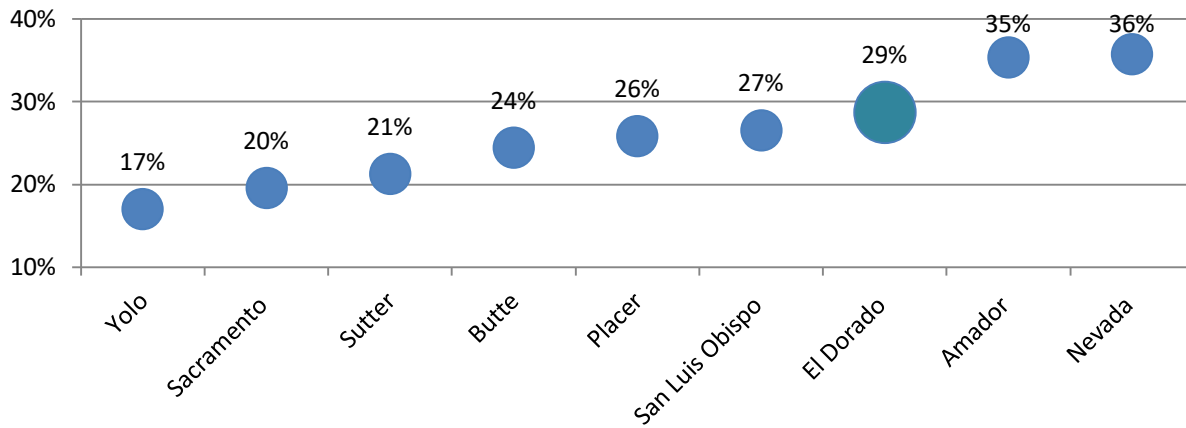
Source: State of California, Department of Finance, 2019-20 E-1 Population Estimates.

EL DORADO COUNTY PROFILE & DEMOGRAPHICS

POPULATION BY AGE GROUP



PERCENT OF POPULATION 60 YEARS AND OVER



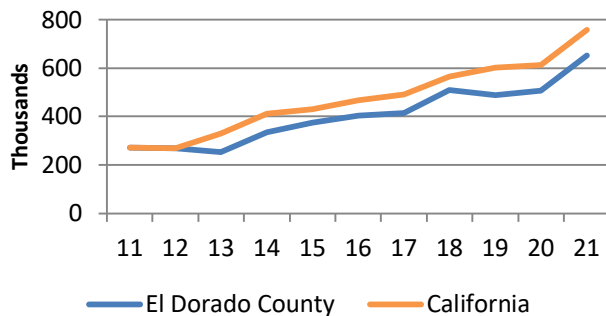
Source: U.S. Census Bureau, 2019 American Community Survey 5-Year Estimates

HOUSING

In El Dorado County there are approximately 91,660 housing units. For the County as a whole, 76% of homes in the County are occupied by the owner. However, this number is affected by only 41% of housing units being occupied by the owner in South Lake Tahoe, as many in that area of the County are second homes and not the primary residence of the owner.

Source: U.S. Census Bureau, 2019 American Community Survey 5-Year Estimates

MEDIAN HOME SALE PRICE



SINGLE-FAMILY MEDIAN HOME SALE PRICES

El Dorado County home values have increased **13%** over the past year. The median home value of owner-occupied housing is \$460,900.

The median list price per square foot in El Dorado County is \$307, which is lower than the State of California average of \$357. The median price of homes sold in El Dorado County is \$652,500.

Source: California Association of Realtors, March 2021; U.S. Census Bureau, 2019 American Community Survey 5-Year Estimates

ECONOMY

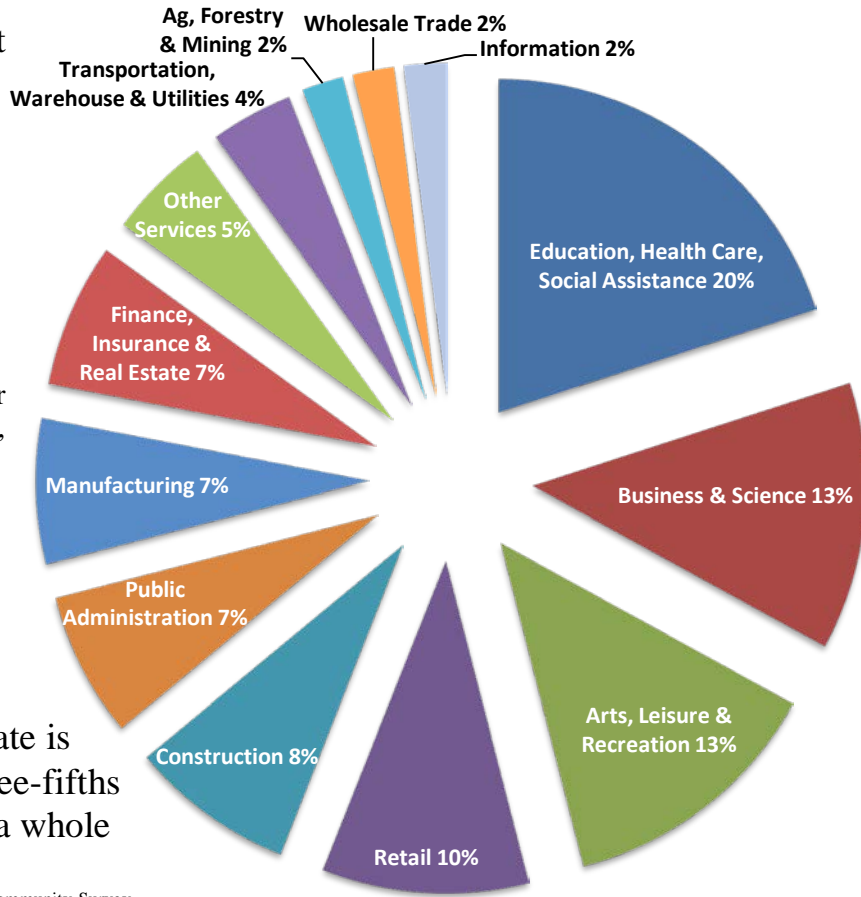
El Dorado County enjoys a diverse economy.

The largest employment sector is Education, Health Care, and Social Assistance with 17,295 employed.

The Business & Science sector employs 10,819. Arts, Leisure, & Recreation is a close third employing 10,628.

The County's poverty rate is 8.4%, approximately three-fifths the rate in California as a whole (13.4%).

Source: U.S. Census Bureau, 2019 American Community Survey 5-Year Estimates



COUNTY EMPLOYEES

(per 1,000 residents; excluding city populations)

County	Employees per 1,000 residents
El Dorado	12.1
Nevada	12.3
Amador	18.6
Sacramento	21.8
San Luis Obispo	23.2
Placer	23.3
Butte	35.6
Sutter	50.3
Yolo	53.0

MEDIAN HOUSEHOLD INCOME

California	El Dorado
\$75,235	\$83,377

UNEMPLOYMENT RATE

California	El Dorado
6.1%	5.5%

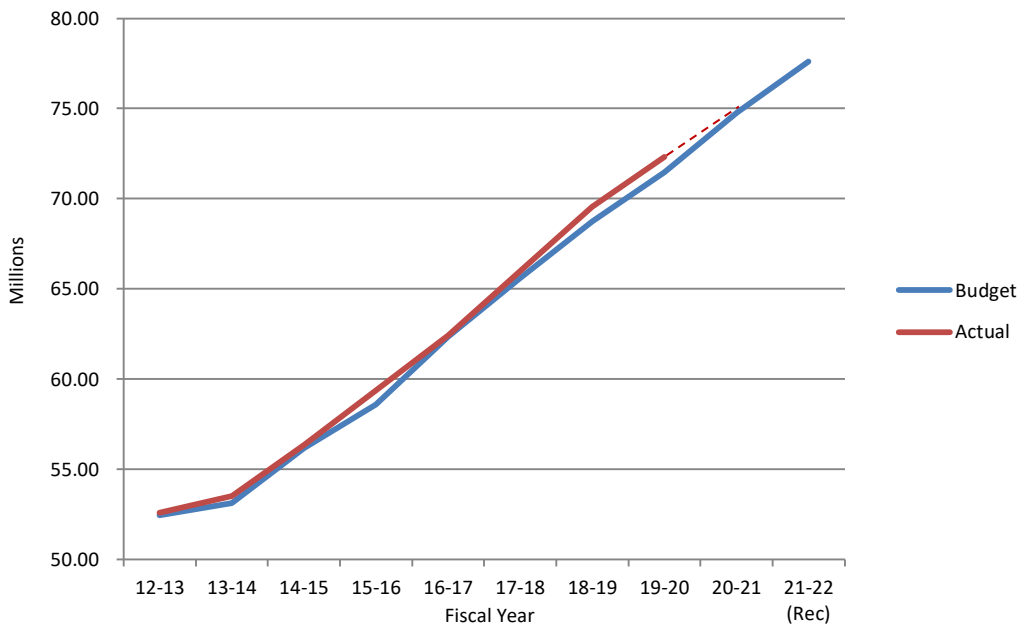
PER CAPITA INCOME

California	El Dorado
\$36,955	\$42,749

Source: U.S. Census Bureau, 2019 American Community Survey 5-Year Estimates

PROPERTY TAX

All real and some personal property (unless exempted), is assessed and taxed under the State Constitution and Revenue & Taxation Code.

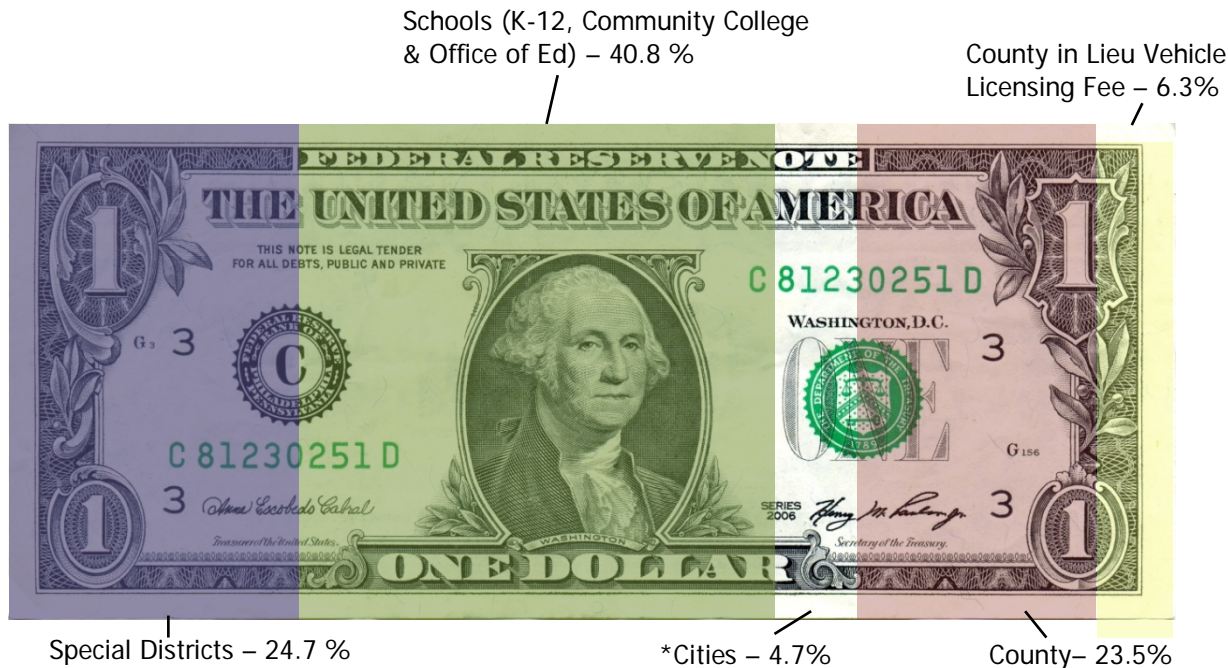


*Represents on General Fund Discretionary Current Property Taxes

Property taxes are a major source of unrestricted revenue for the County general fund, schools, cities, and special districts. Proposition 13 establishes the current method of assessment. Property owners may also vote to include certain types of additional special assessments along with property taxes. The County Assessor maintains the inventory of assessable property and prepares the assessment rolls. The Auditor maintains the tax rates, calculates the taxes due, and adds any special assessments.

How is property tax revenue distributed?

Property taxes are allocated within a county based upon the historical share of property tax received by local agencies prior to Proposition 13. Under certain conditions, taxes may be reallocated.

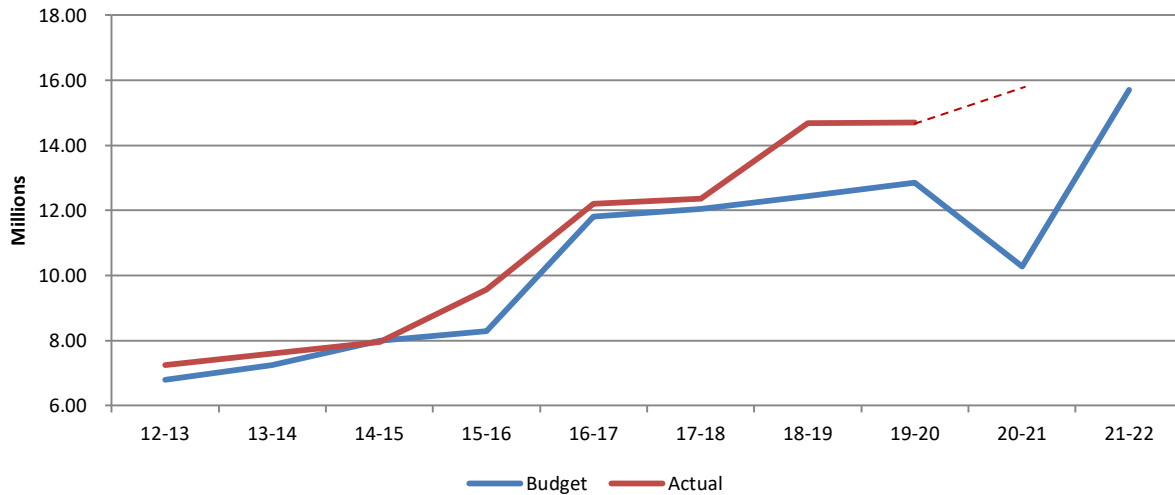


Graphic developed by the Treasurer-Tax Collector Department. (Source El Dorado County Auditor-Controller's Office)

*includes the Cities of Placerville and South Lake Tahoe (2.5%), Cities in Lieu Vehicle Licensing fees (.9%) and City of So. Lake Tahoe Redevelopment Successor Agency (1.3%)

SALES TAX

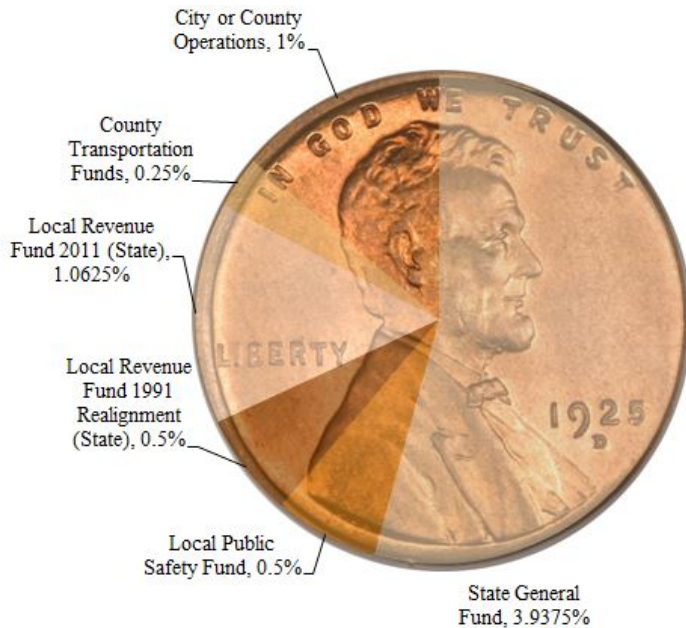
The Bradley-Burns Uniform Sales and Use Tax Law provides for a city/county rate of 1.25%. One-quarter cent of the levy is sent to the county-wide regional transportation fund. The balance goes to support local government general funds.



*Represents only the General Fund Discretionary Sales tax Source: El Dorado County Final Budget, 2012-13 through 2020-21

How is Sales Tax Allocated?

El Dorado County receives 1% of the 7.25% statewide sales tax rate for general County operations. The City of South Lake Tahoe imposes an additional 0.50% tax over the state rate, and Placerville imposes an additional 1%.



Data source: California State Board of Equalization, Detailed Description of the Sales & Use Tax Rate, 2020

TAXES COLLECTED

(Total FY 2019-20, in millions)

\$631.6	Sacramento
\$241.8	Placer
220.4	San Luis Obispo
129.4	El Dorado
74.9	Butte
66	Yolo
60.1	Nevada
34.2	Sutter
27	Amador

(FY 2019-20, Per Resident, excludes cities)

\$2,187	Yolo
\$2,098	Placer
\$1,824	San Luis Obispo
\$1,620	Sutter
\$1,273	Amador
\$1,064	Sacramento
\$1,107	Butte
\$912	Nevada
\$810	El Dorado

Source: FY 2019-20 adopted budgets, Summary Schedule 5 estimates