

RECOMMENDED BUDGET FISCAL YEAR 2021-22



ORGANIZATIONAL CHARTS

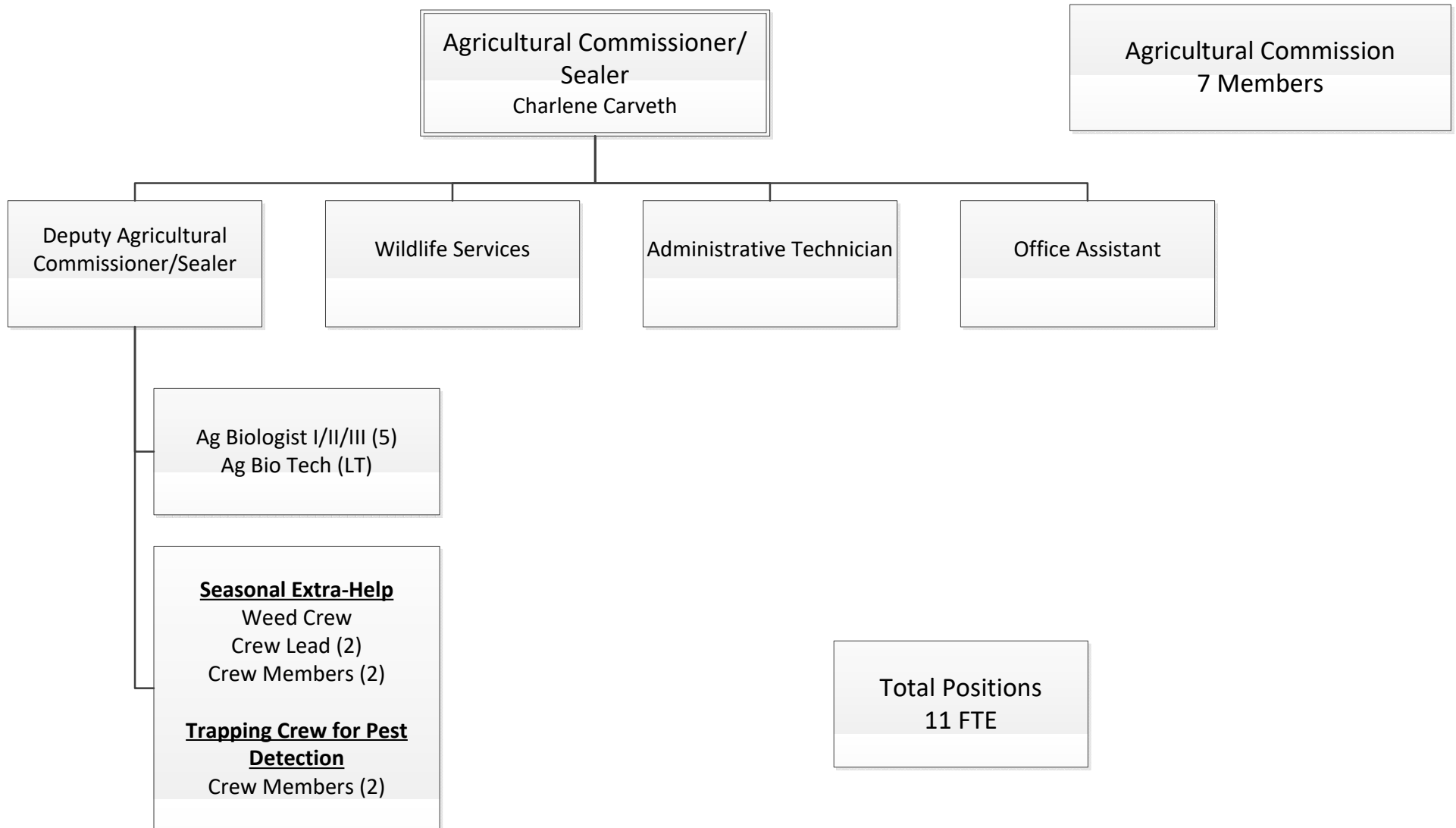
Table of Contents

Agriculture	1
Alternate Public Defender	2
Assessor	3
Auditor-Controller	4
Board of Supervisors	5
Chief Administrative Office (CAO)	6
CAO, Administration and Budget	7
CAO, Central Services	8
CAO, Emergency Medical Services and Emergency Preparedness	9
CAO, Parks	10
Child Support	11
County Counsel	12
District Attorney	13
Environmental Management	14
HHSA, Administration and Financial Services	15
HHSA, Social Services	16
HHSA, Community Services	17
HHSA, Behavioral Health	18
HHSA, Public Health	19
HHSA, Animal Services	20
HHSA, Public Guardian	21
HHSA, Veterans Affairs	22
Human Resources/Risk Management	23
Information Technologies	24
Library	25
Planning and Building	26

Probation	27
Public Defender	28
Recorder-Clerk	29
Registrar of Voters	30
Sheriff	31
Surveyor	32
Transportation	33
Treasurer-Tax Collector	34

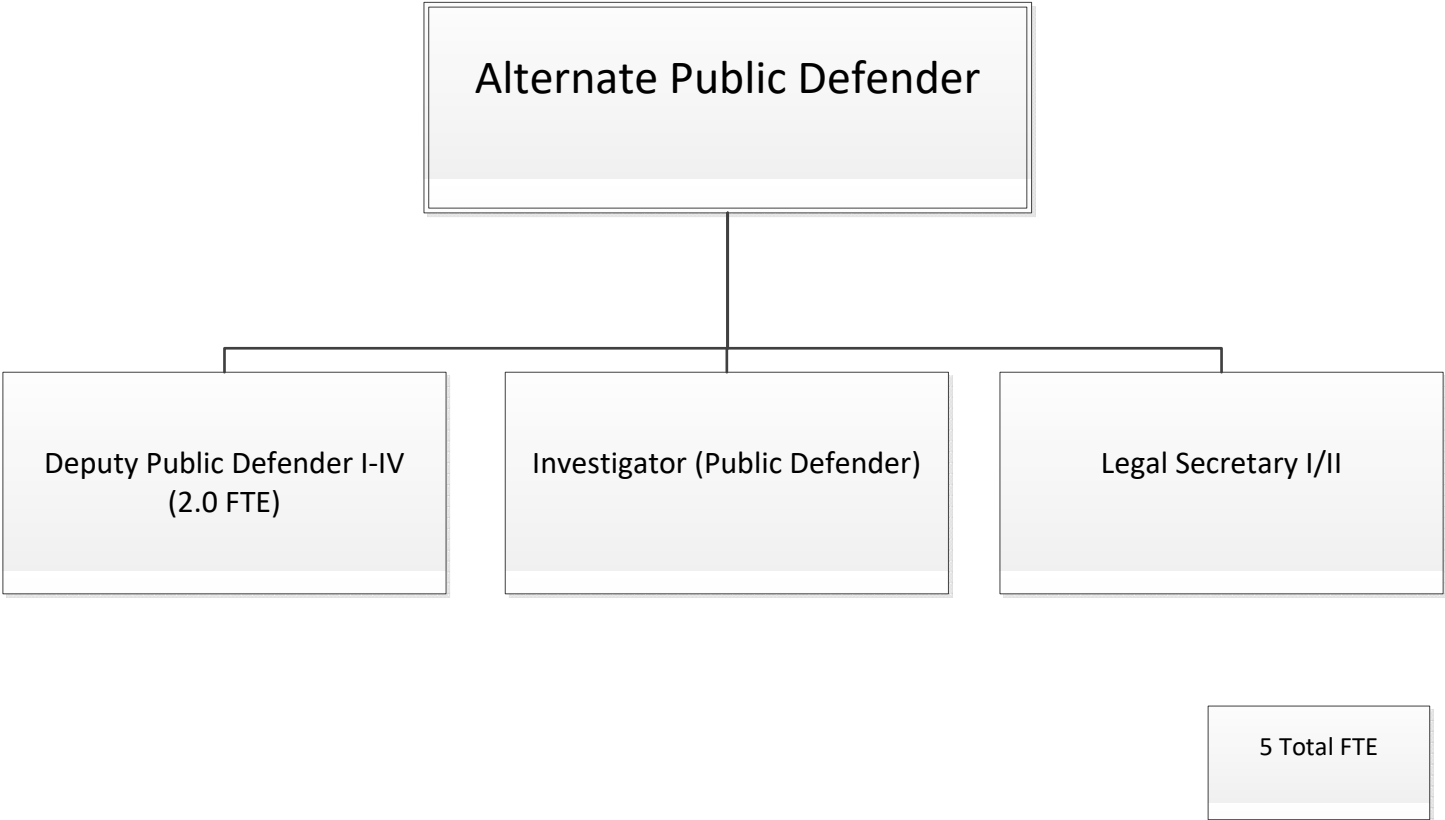
Organizational Charts

RECOMMENDED BUDGET • FY 2021-22

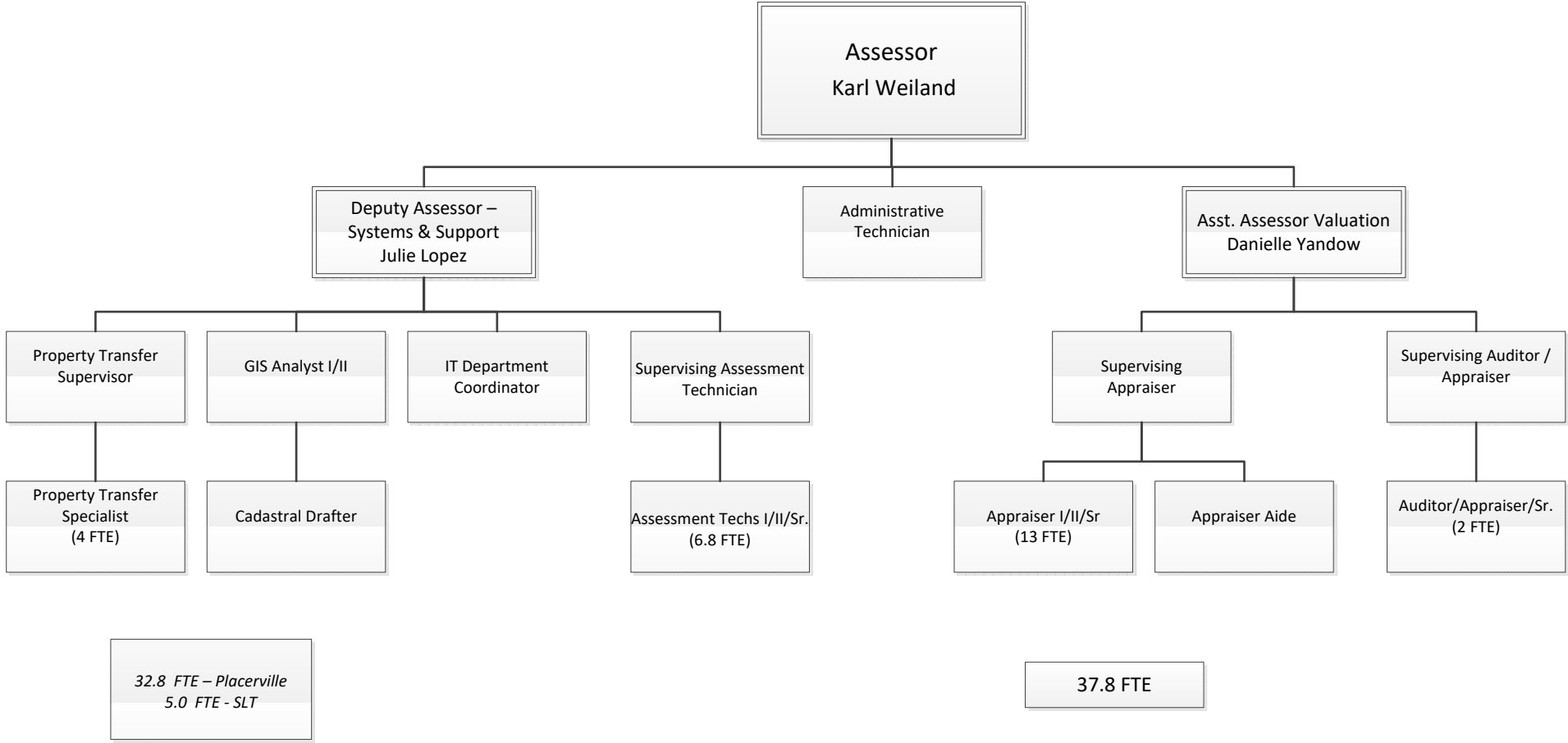


Organizational Charts

RECOMMENDED BUDGET • FY 2021-22

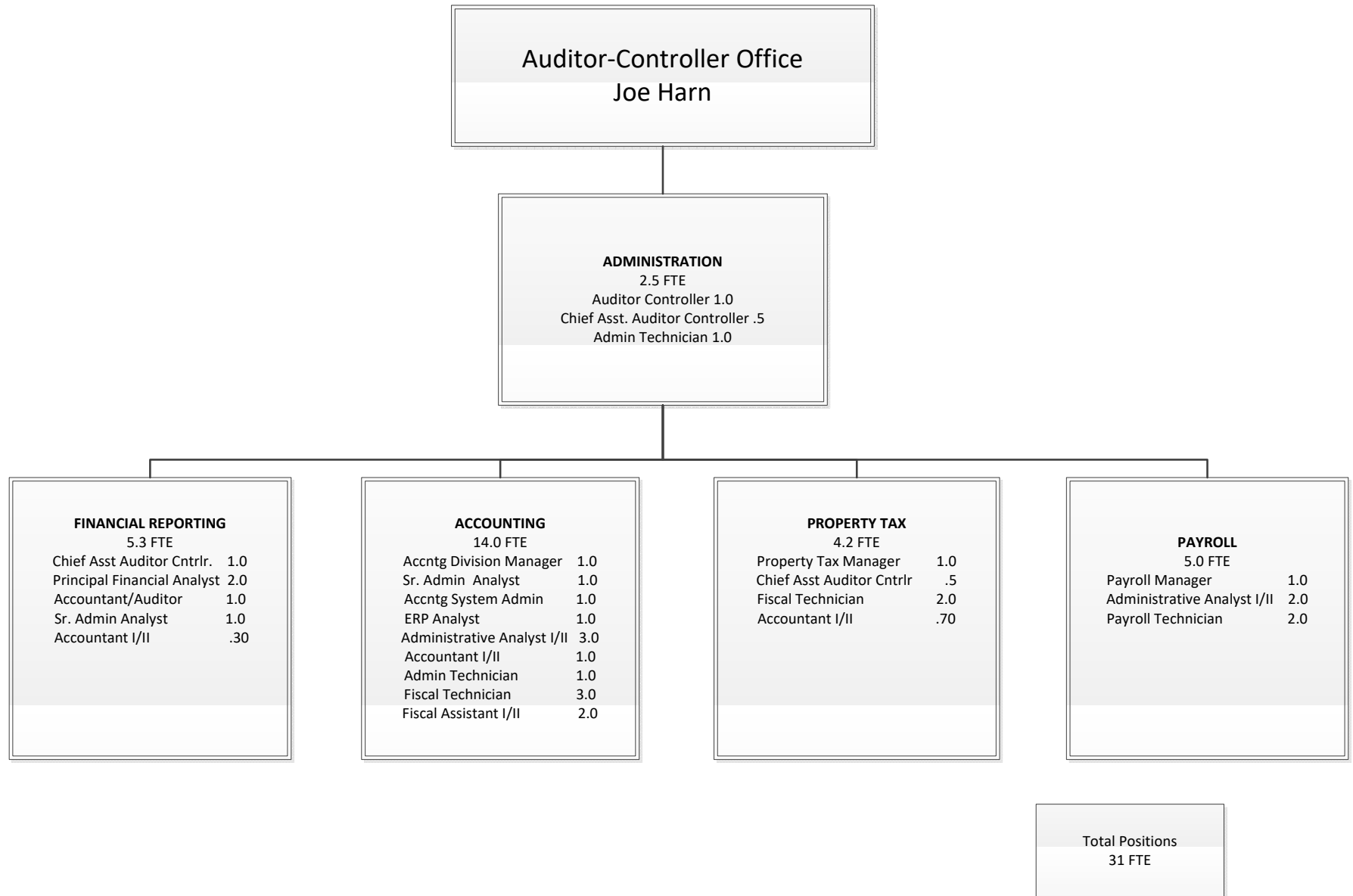


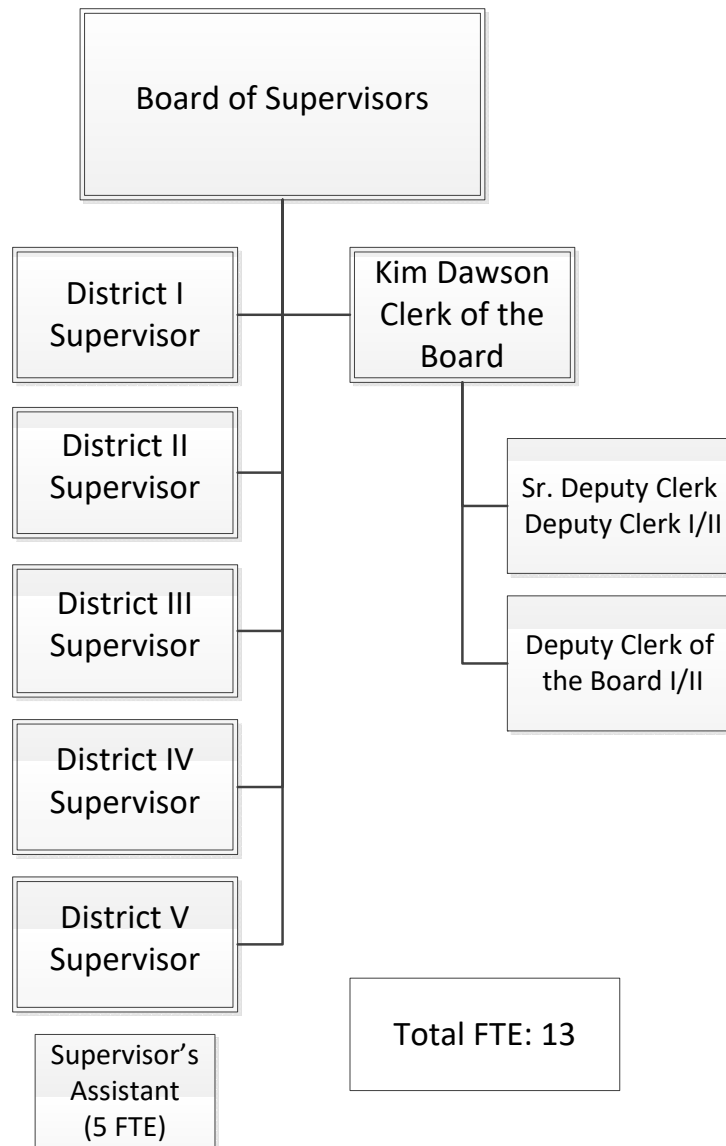
Organizational Charts
RECOMMENDED BUDGET • FY 2021-22

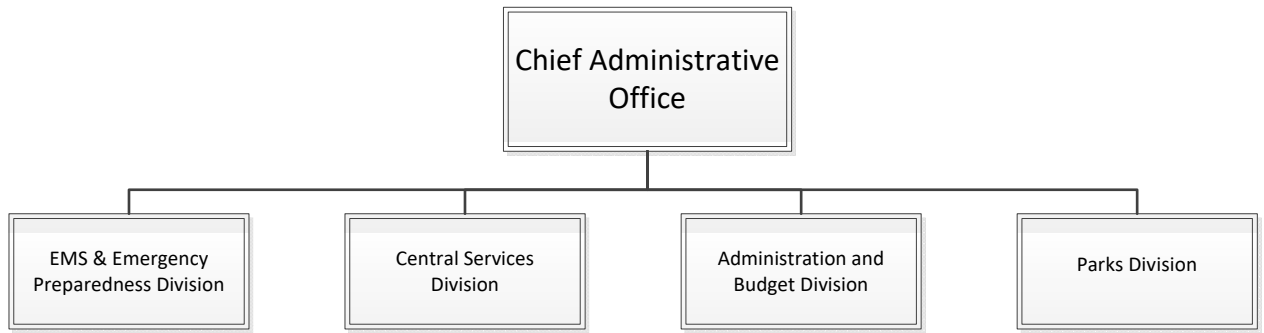


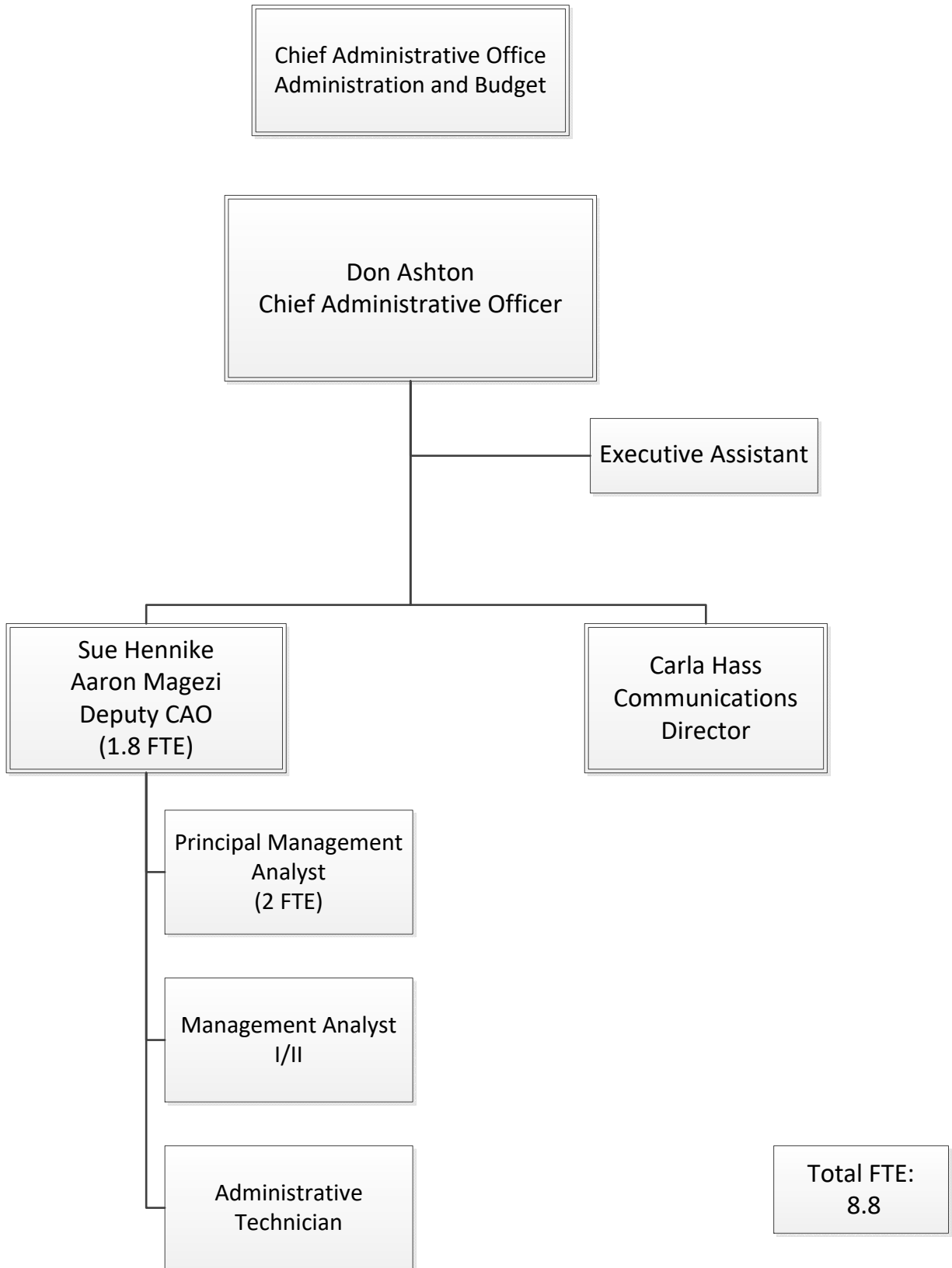
Organizational Charts

RECOMMENDED BUDGET • FY 2021-22



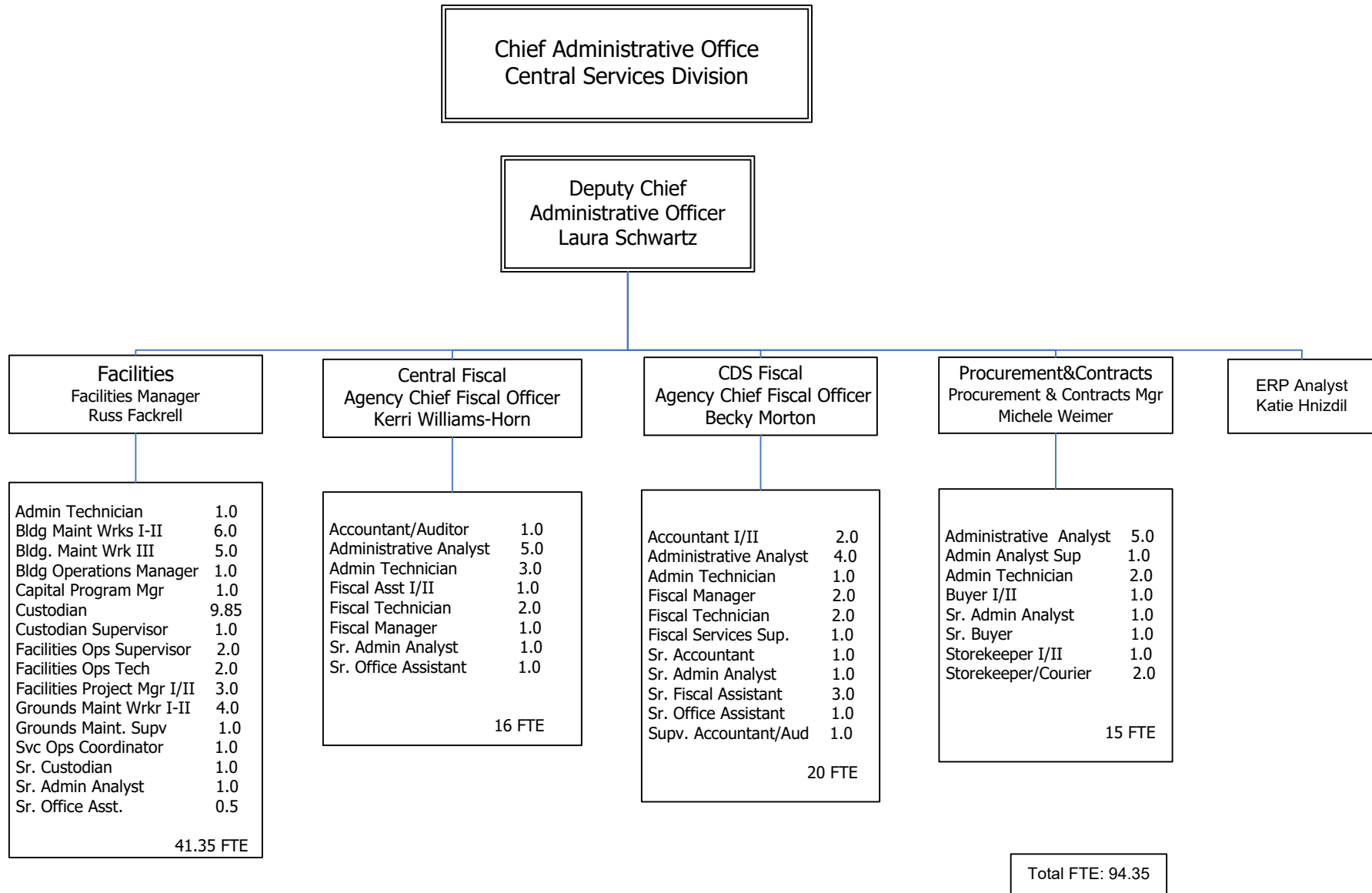






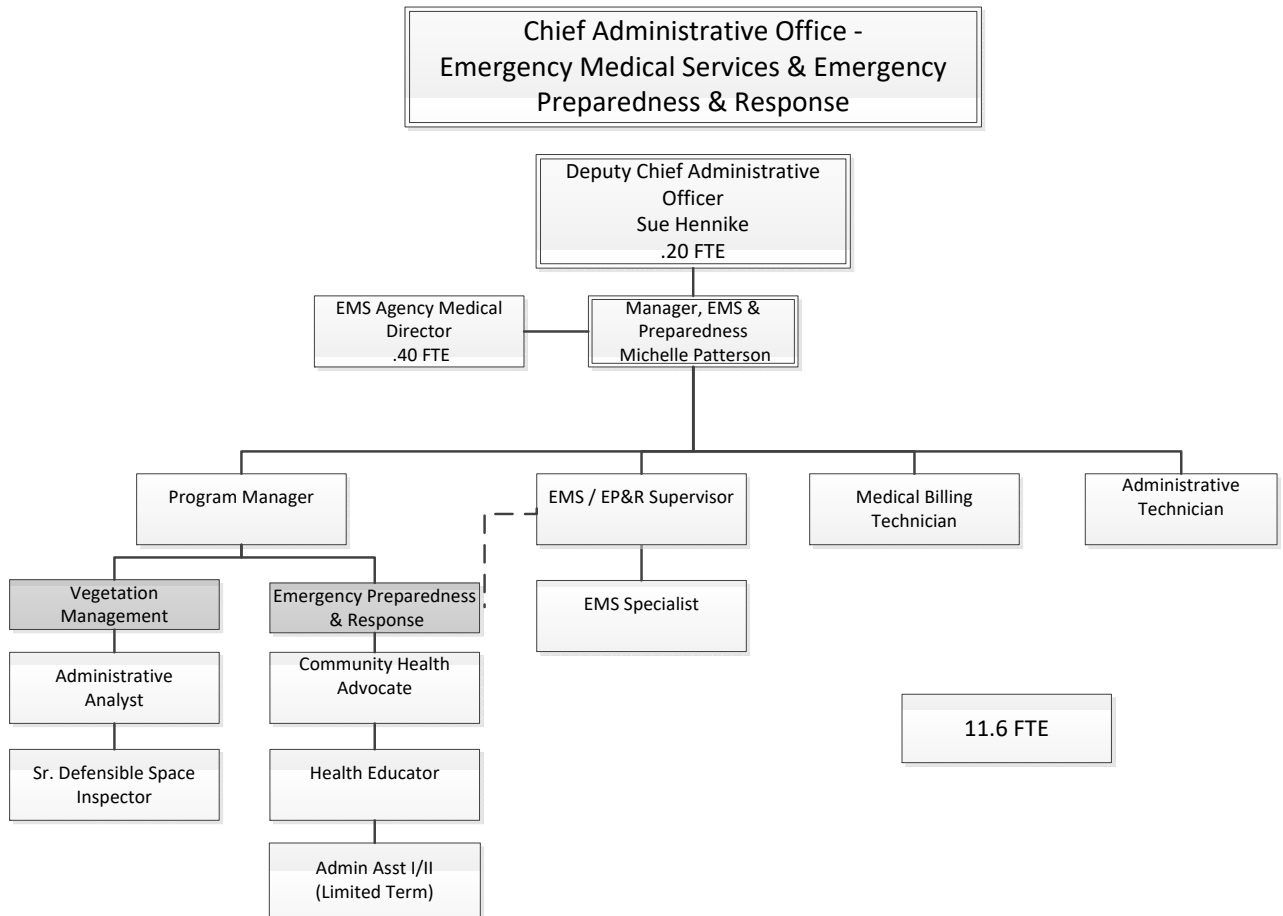
Organizational Charts

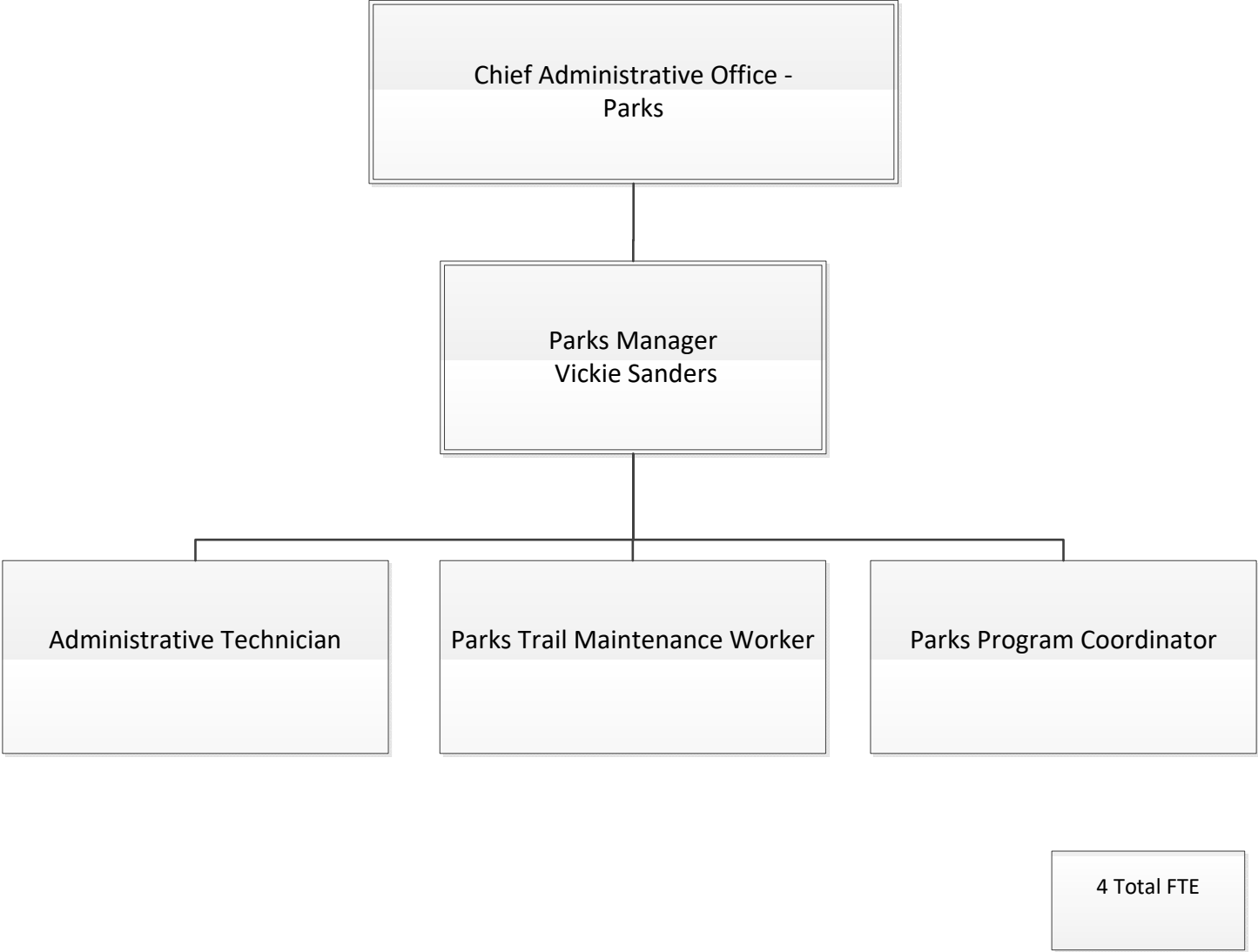
RECOMMENDED BUDGET • FY 2021-22

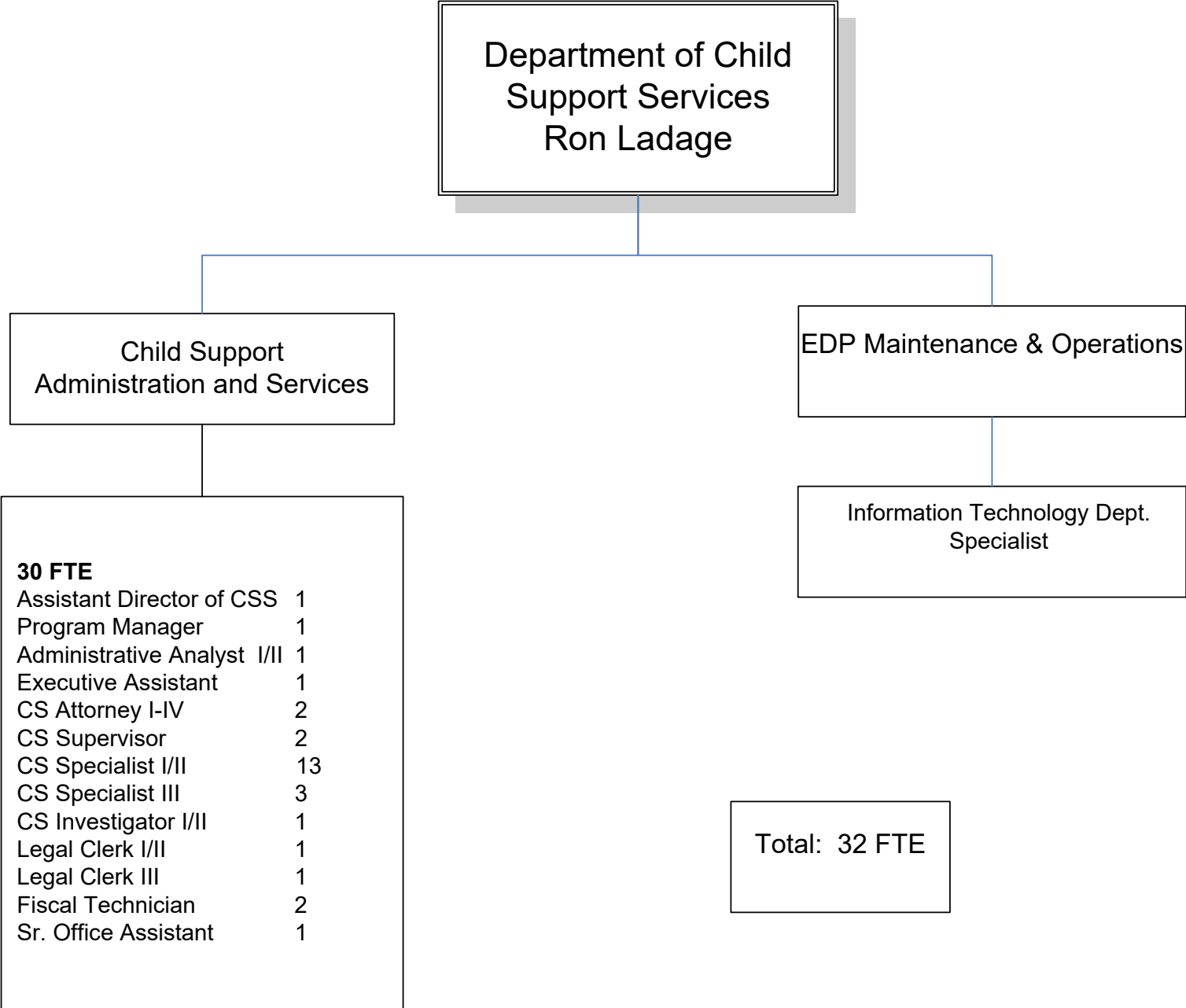


Organizational Charts

RECOMMENDED BUDGET • FY 2021-22

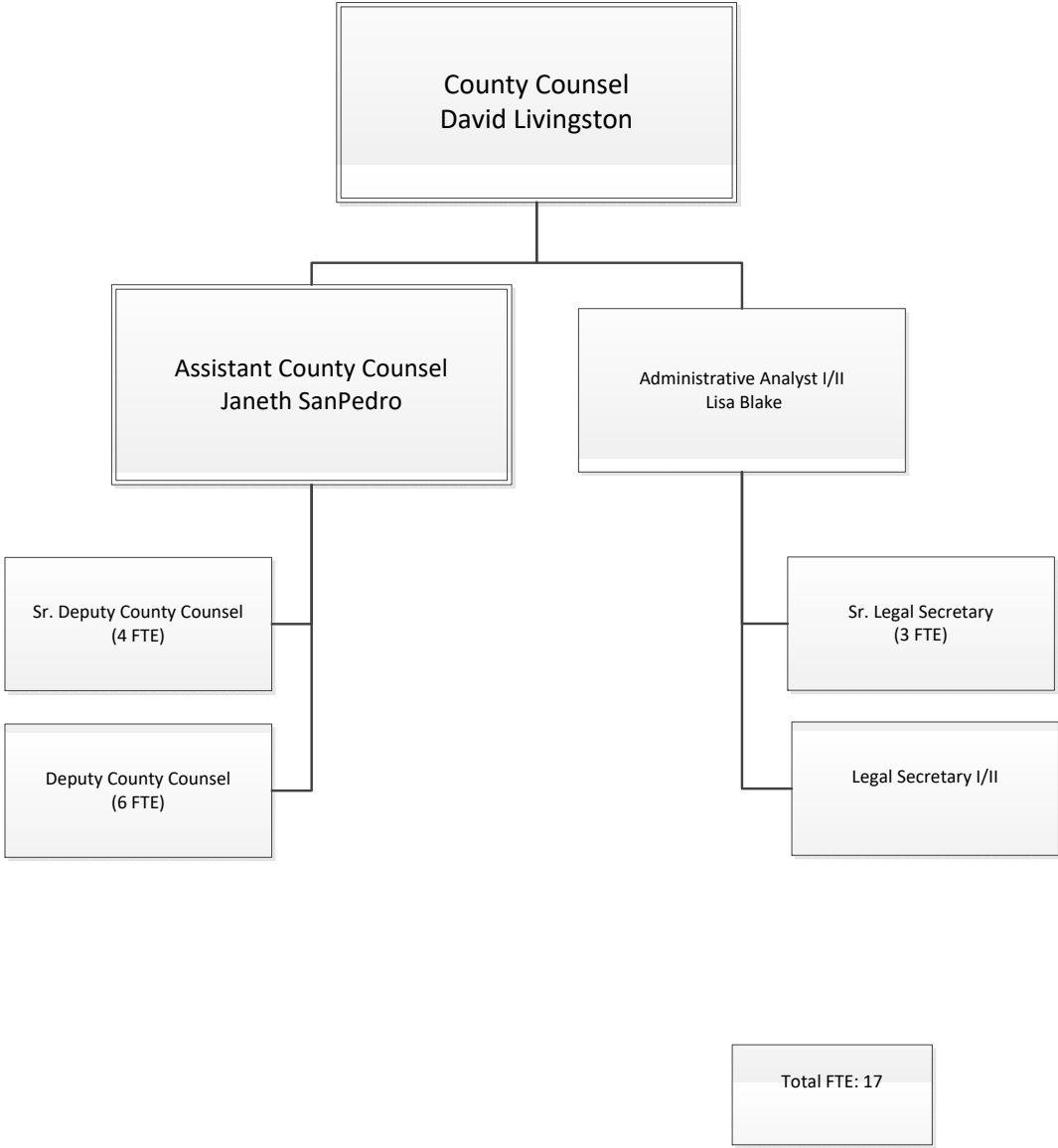






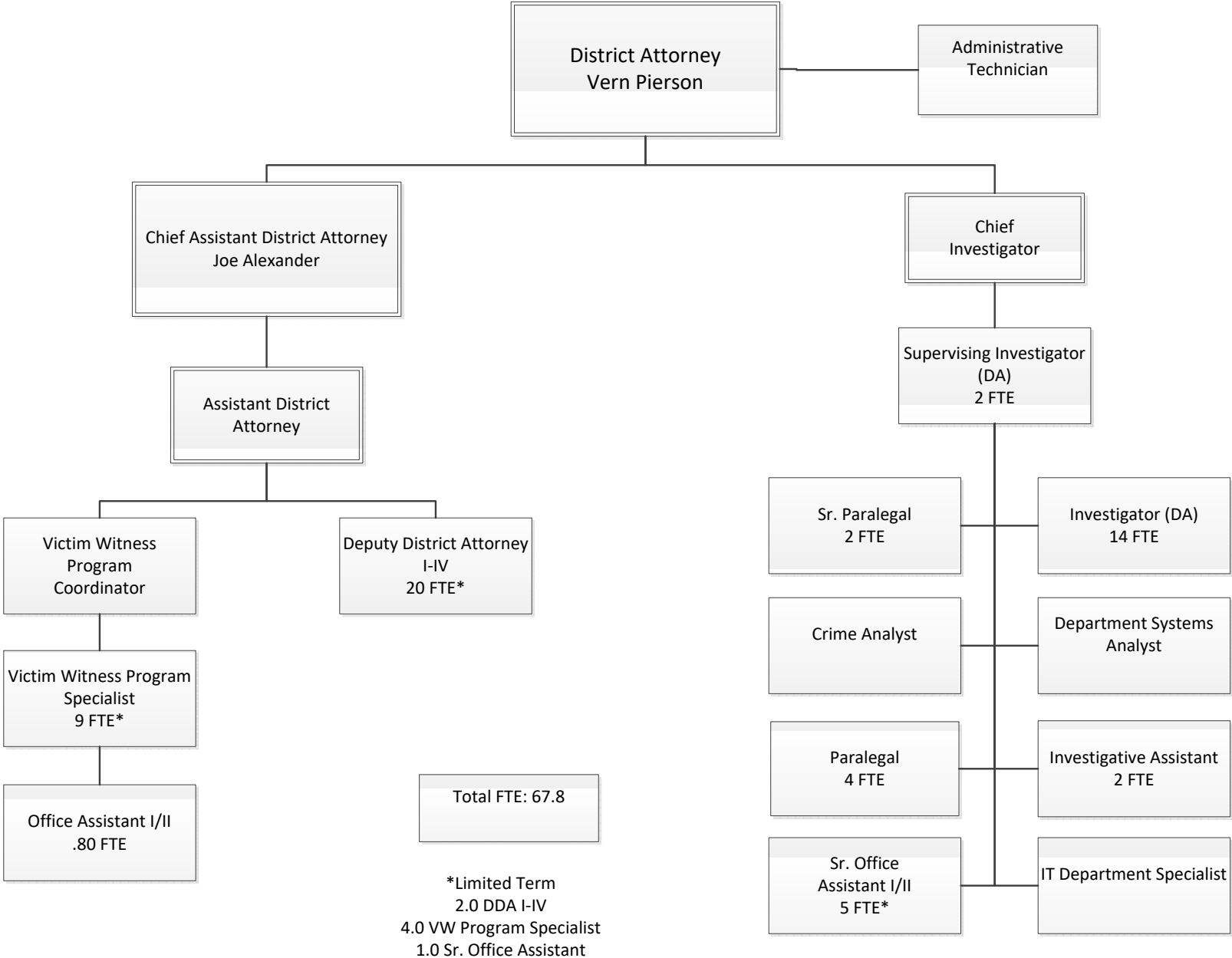
Organizational Charts

RECOMMENDED BUDGET • FY 2021-22



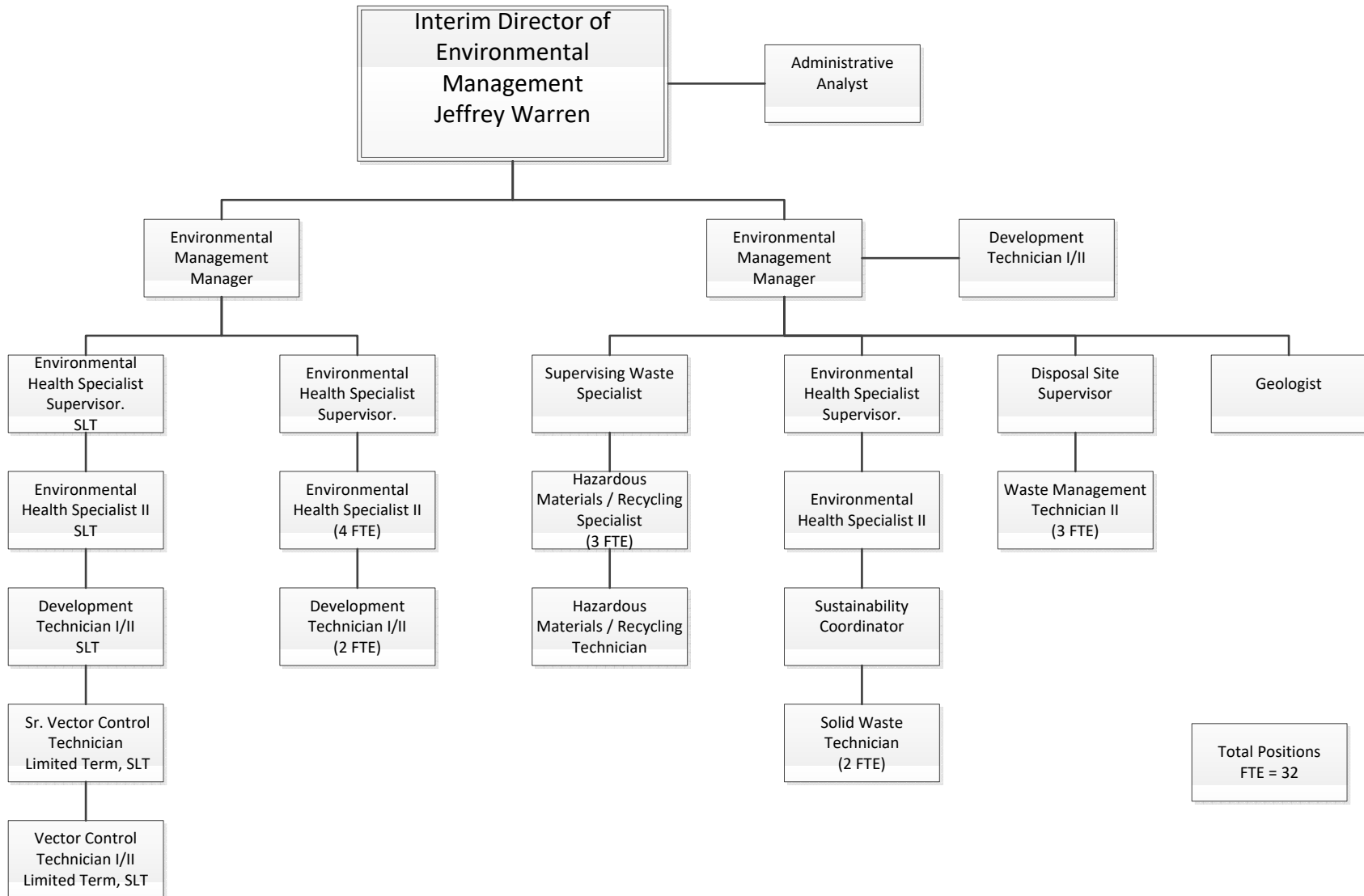
Organizational Charts

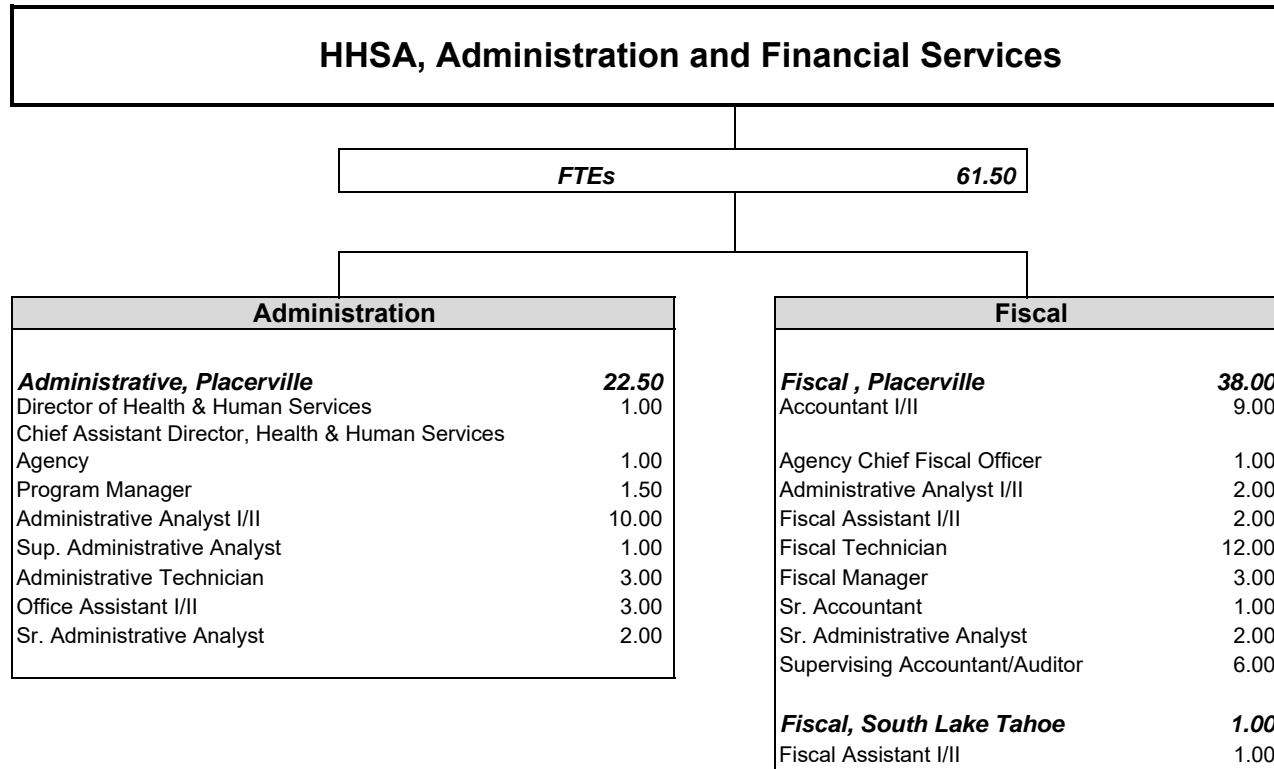
RECOMMENDED BUDGET • FY 2021-22

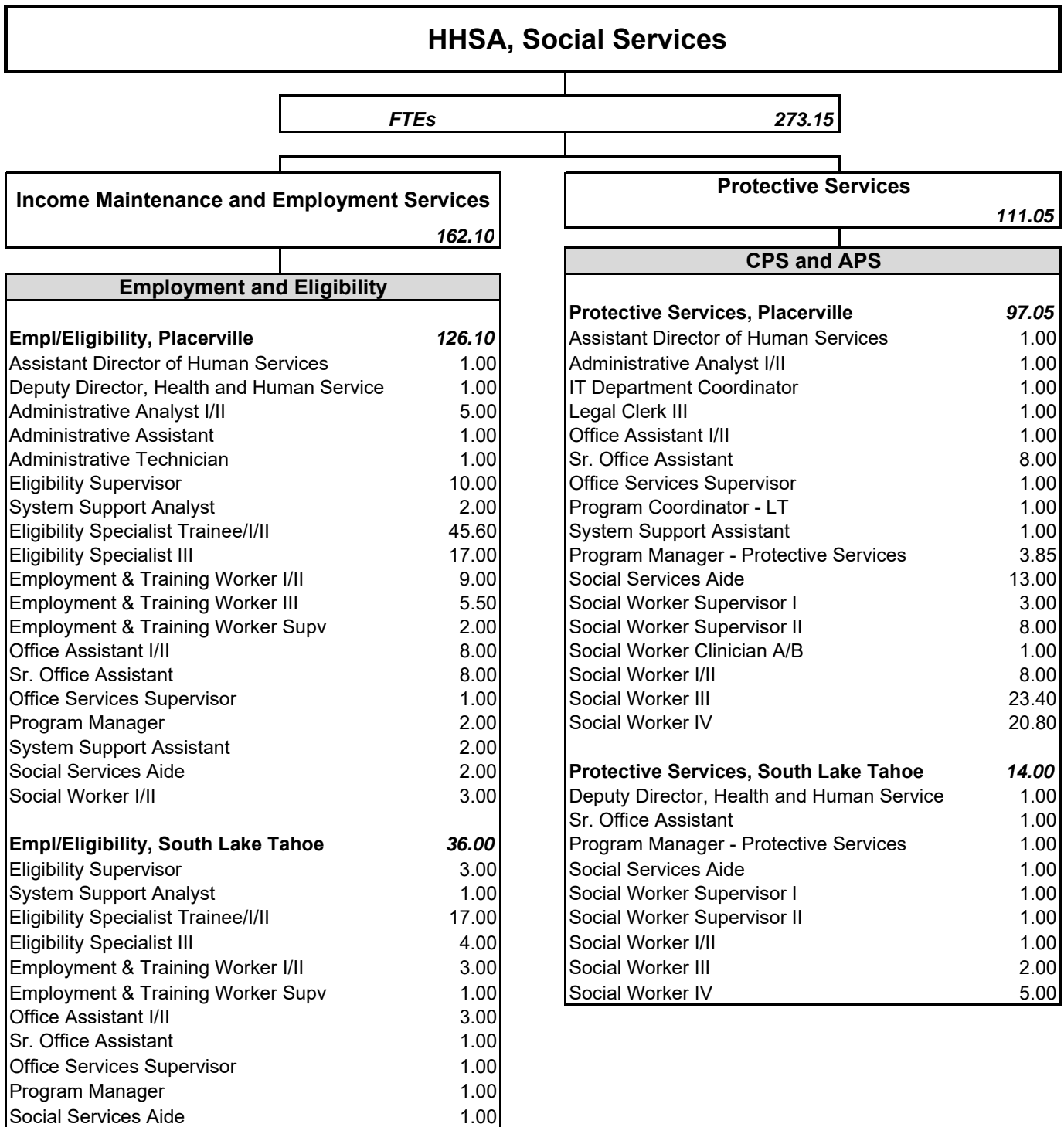


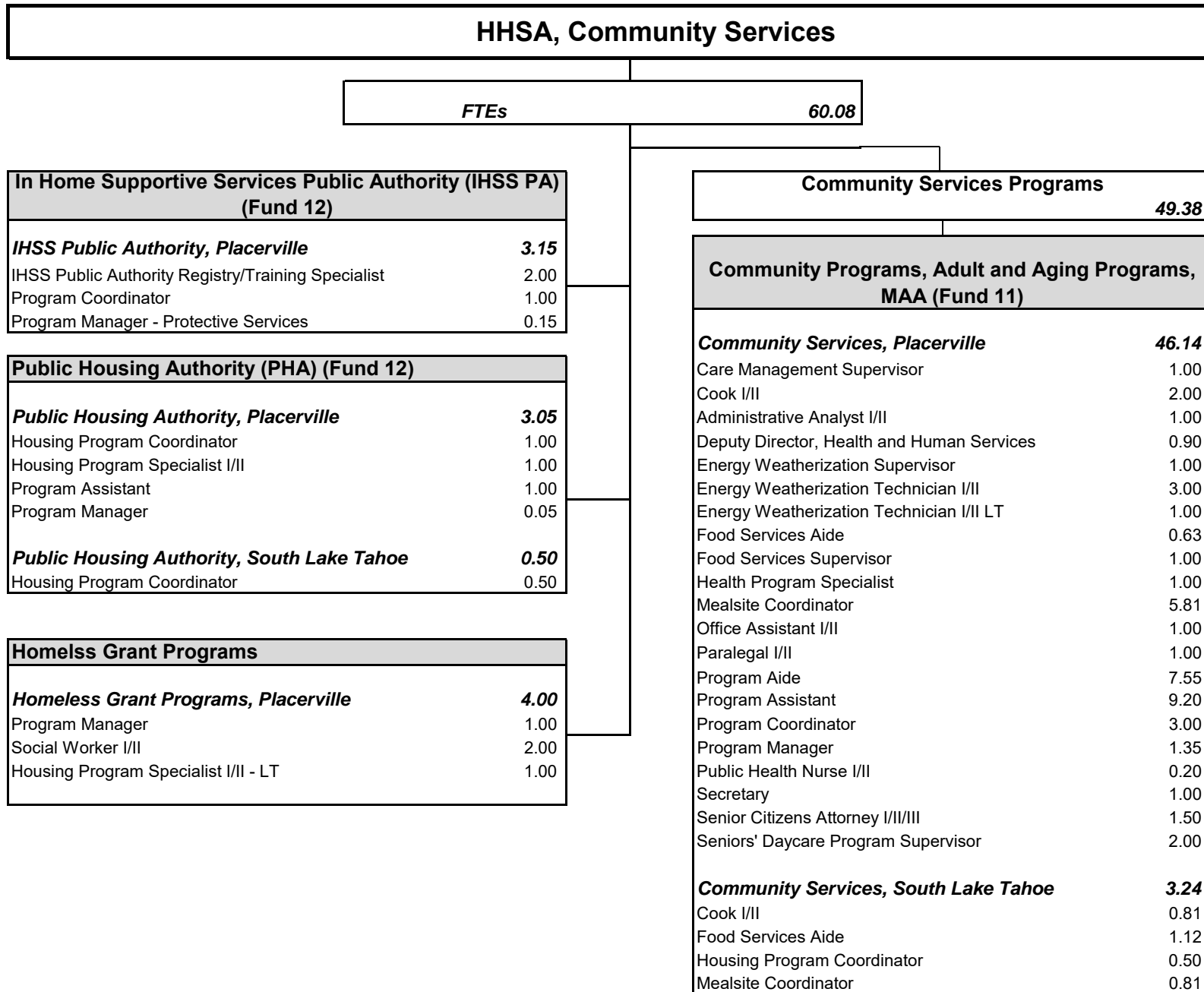
Organizational Charts

RECOMMENDED BUDGET • FY 2021-22









HHSA, Behavioral Health

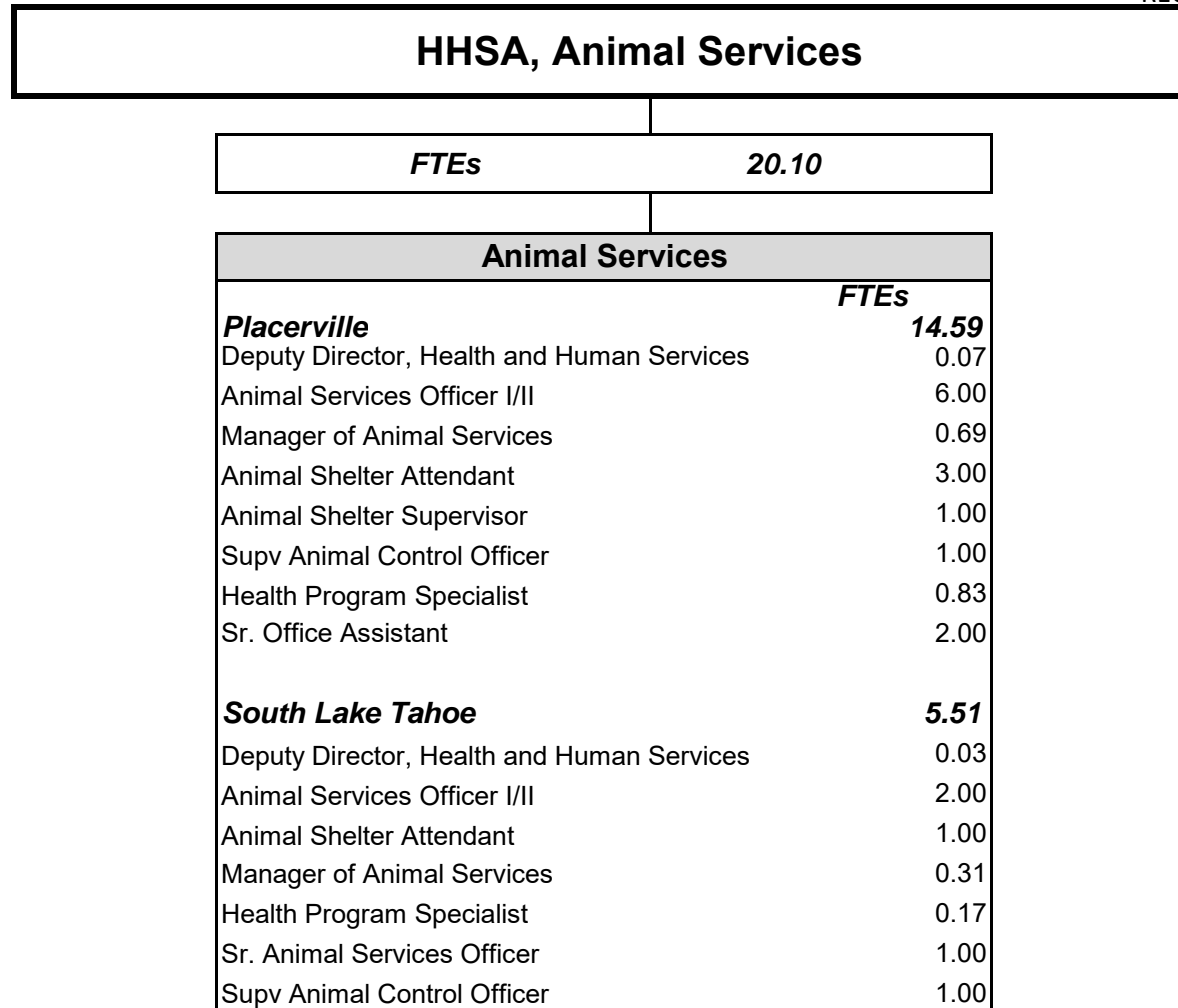
FTEs 112.05

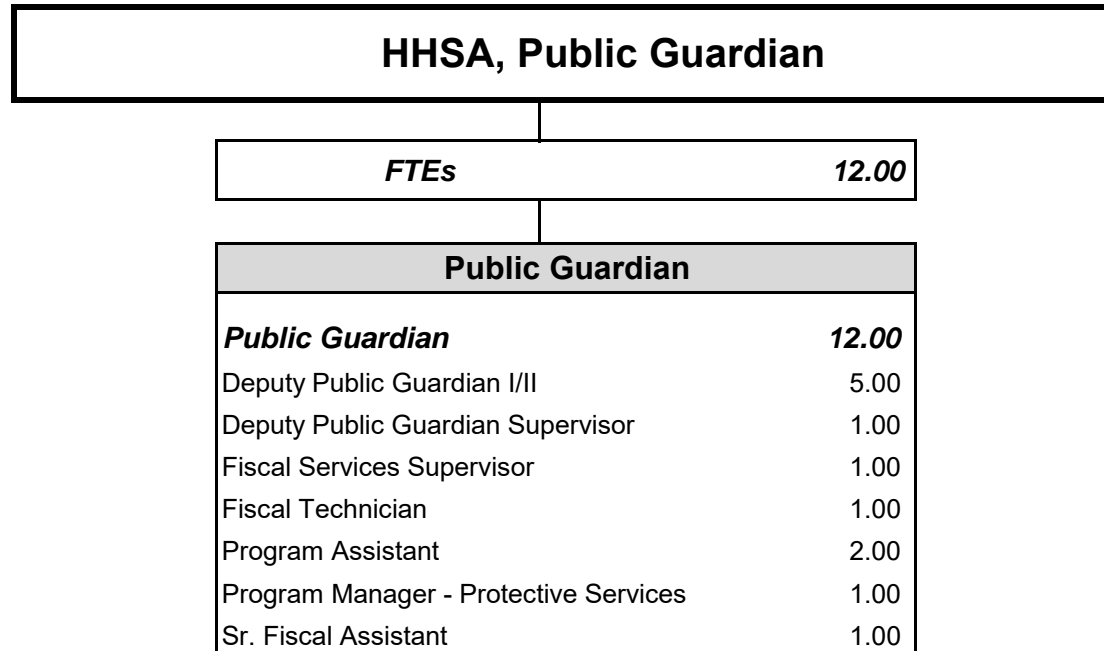
Traditional Behavioral Health Programs 33.68 FTEs	
Placerville	29.44
Administrative Secretary	1.00
Administrative Technician	1.85
Administrative Analyst I/II	1.75
Department Systems Analyst	1.00
Deputy Director, Health and Human Services	1.00
Director of Behavioral Health	1.00
Fiscal Technician	1.00
Manager of Mental Health Programs	1.59
Medical Office Assistant I/II	3.50
Medical Records Technician	0.90
Mental Health Aide	0.69
Mental Health Clinical Nurse	0.08
Mental Health Clinician IA/IB/II	5.70
Mental Health Medical Director	0.83
Mental Health Patient's Rights Advocate	0.40
Mental Health Program Coordinator IA/IB/II	2.65
Mental Health Worker I/II	1.80
Program Manager	0.50
Psychiatric Technician I/II	0.30
Psychiatrist I/II	0.04
Public Health Nurse Practitioner	0.86
Sr. Office Assistant	1.00
South Lake Tahoe	4.24
Administrative Technician	0.95
Manager of Mental Health Programs	0.80
Medical Office Assistant I/II	0.70
Mental Health Clinician IA/IB/II	1.45
Psychiatric Technician I/II	0.09
Mental Health Program Coordinator IA/IB/II	0.25

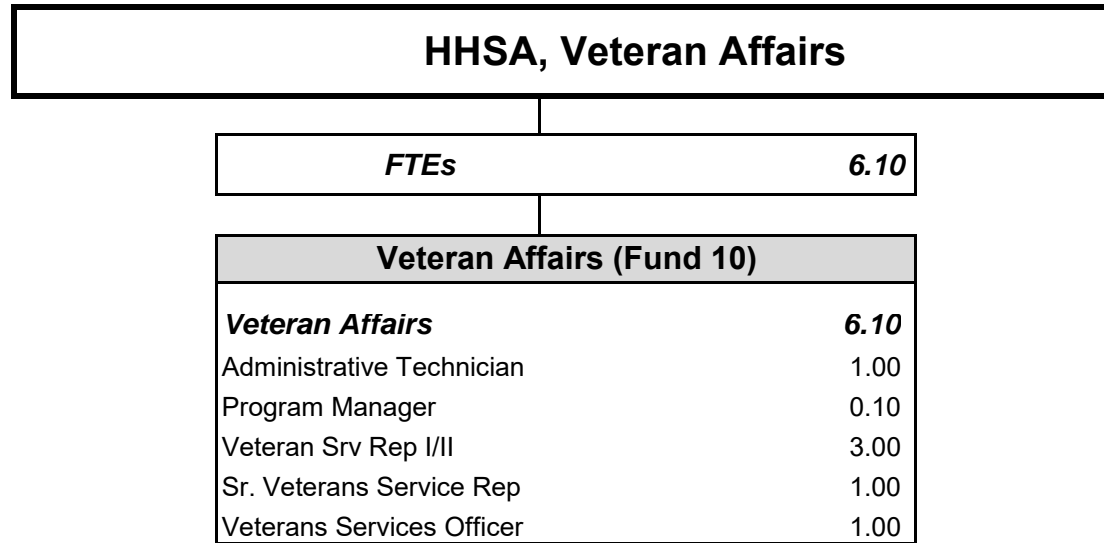
Mental Health Services Act (MHSA) 59.1 FTEs	
Placerville	44.34
Administrative Analyst I/II	1.25
Administrative Technician	1.15
Health Educator	0.23
Manager of Mental Health Programs	0.41
Medical Office Assistant I/II	0.50
Mental Health Aide	5.56
Mental Health Clinical Nurse	0.92
Mental Health Clinician IA/IB/II	16.80
Mental Health Medical Director	0.17
Mental Health Program Coordinator IA/IB/II	2.85
Mental Health Worker I/II	10.20
Program Manager	0.50
Psychiatric Technician I/II	1.70
Psychiatrist I/II	0.96
Public Health Nurse Practitioner	0.14
Sr. Administrative Analyst	1.00
South Lake Tahoe	14.76
Administrative Technician	0.05
Manager of Mental Health Programs	0.20
Medical Office Assistant I/II	0.30
Mental Health Clinician IA/IB/II	4.55
Mental Health Program Coordinator IA/IB/II	0.75
Mental Health Worker I/II	8.00
Psychiatric Technician I/II	0.91

Substance Use Disorder Svcs Programs 19.27 FTEs	
Placerville	16.77
Alcohol and Drug Program Division Mgr	1.00
Fiscal Technician	1.00
Health Educator	6.77
Health Program Specialist	1.00
IT Department Specialist	1.00
Mental Health Clinician IA/IB/II	3.00
Mental Health Program Coordinator IA/IB/II	0.50
Office Assistant I/II	0.50
Program Assistant	1.00
Supv Health Education Coordinator	1.00
South Lake Tahoe	2.50
Health Educator	0.50
Mental Health Clinician IA/IB/II	1.00
Supv Health Education Coordinator	1.00

HHSA, Public Health	
FTEs	63.35
Public Health Programs	
	FTEs
Placerville	51.90
Director of Public Health	1.00
Care Management Counselor I/II	1.00
Community Health Advocate	1.00
Administrative Analyst I/II	2.00
Deputy Director, Health and Human Services	1.00
Disease Investigtn/Contrl Specialist I/II	1.00
Epidemiologist I/II	1.00
Health Educator	2.50
Health Program Specialist	4.00
Medical Office Assistant I/II	2.80
Nutrition Services Supervisor	1.00
Nutritionist	0.60
Occupational/Physical Therapist	2.90
Program Assistant	6.20
Program Manager	1.00
Public Health Nurse I/II	13.10
Public Health Officer	1.00
Registered Nurse	1.00
Sr. Office Assistant	3.00
Supv Health Education Coordinator	1.00
Supv Occupational/Physl Therapist	0.80
Public Health Nurse Supervisor	3.00
South Lake Tahoe	11.45
Community Health Advocate	1.00
Medical Office Assistant I/II	2.00
Occupational/Physical Therapist	0.25
Office Assistant I/II	1.00
Program Assistant	2.60
Public Health Nurse I/II	1.80
Public Health Nurse Practitioner	0.80
Public Health Nurse Supervisor	1.00
Supv Health Education Coordinator	1.00

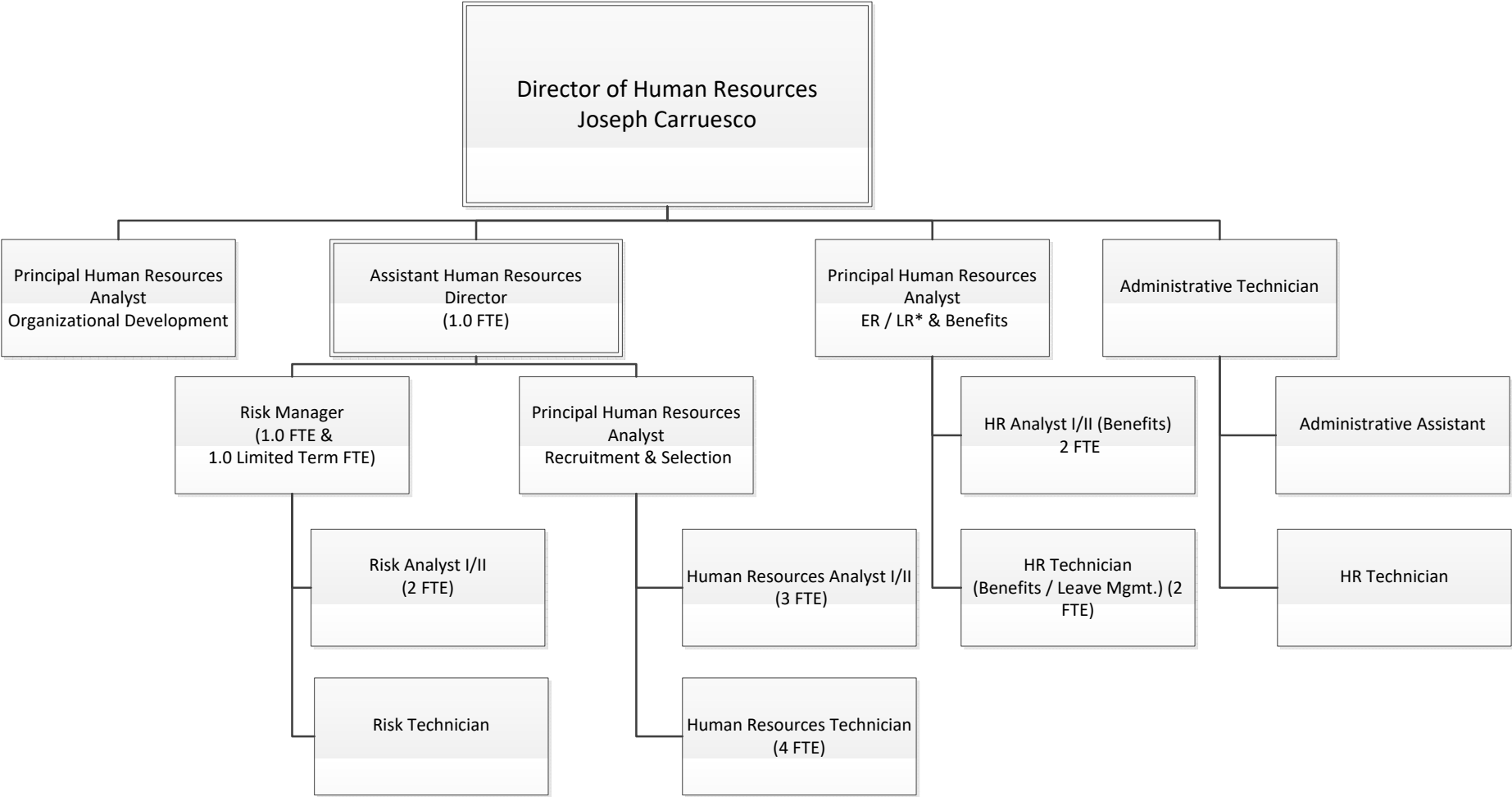






Organizational Charts

RECOMMENDED BUDGET • FY 2021-22

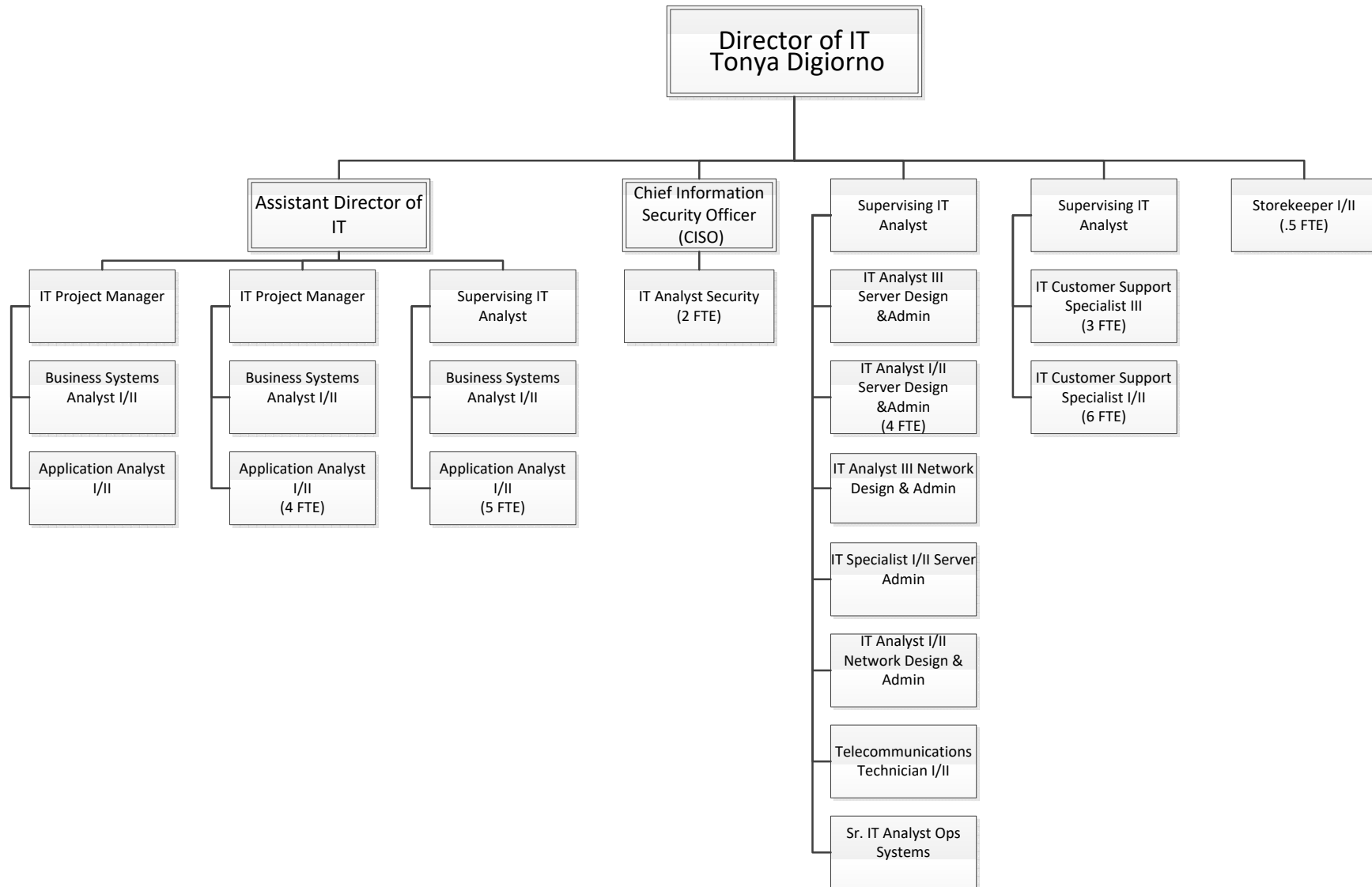


* ER/LR Employee Relations / Labor Relations

Total FTE:
24

Organizational Charts

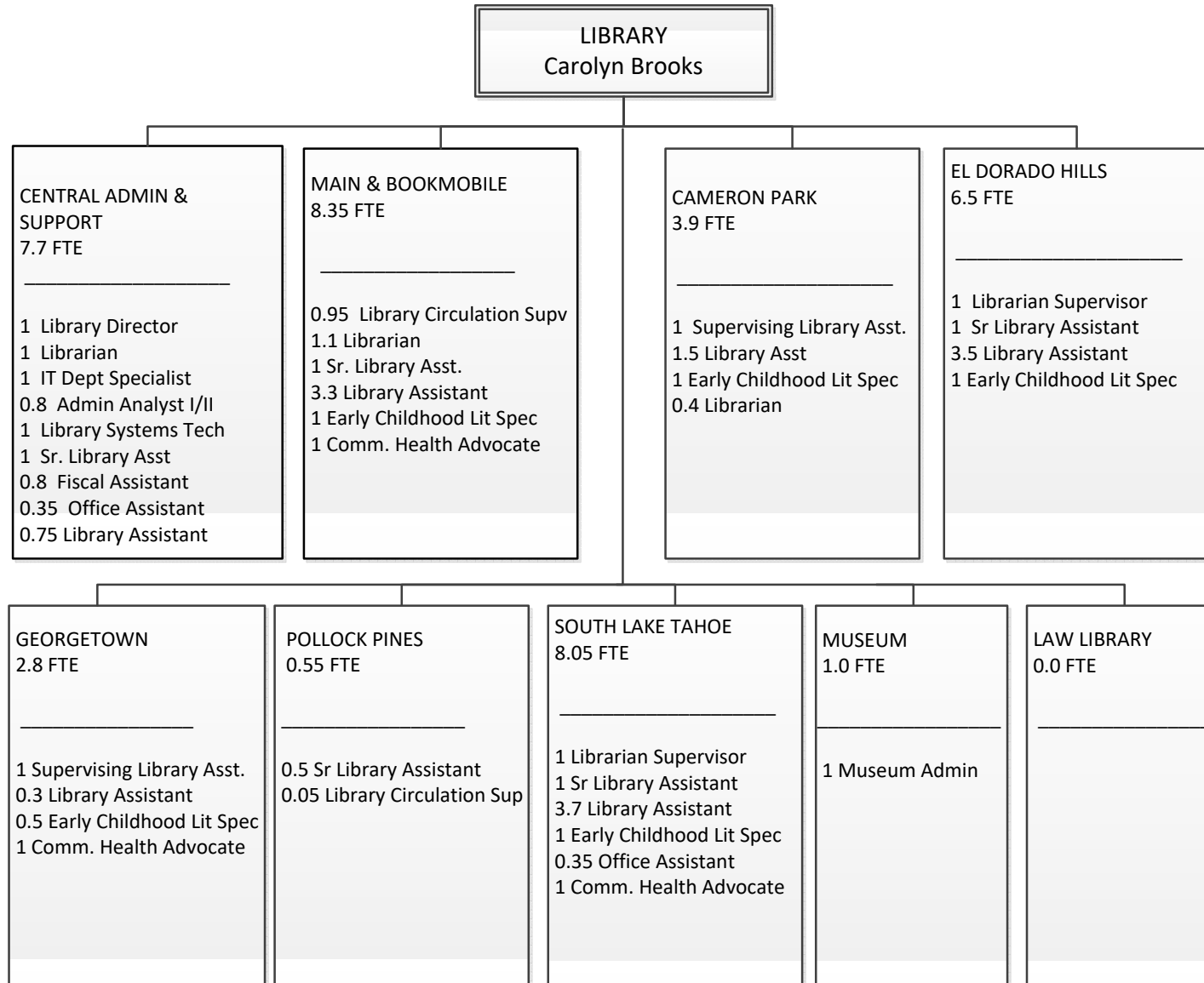
RECOMMENDED BUDGET • FY 2021-22



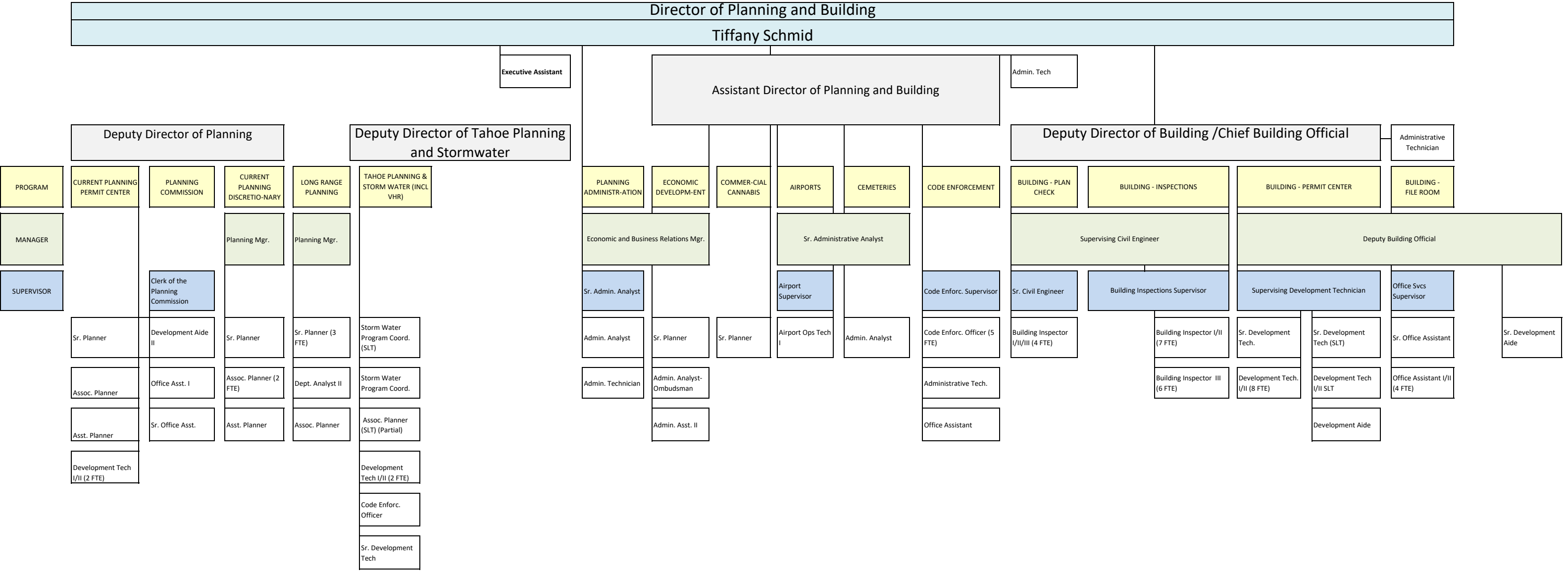
TOTAL FTE: 42.5

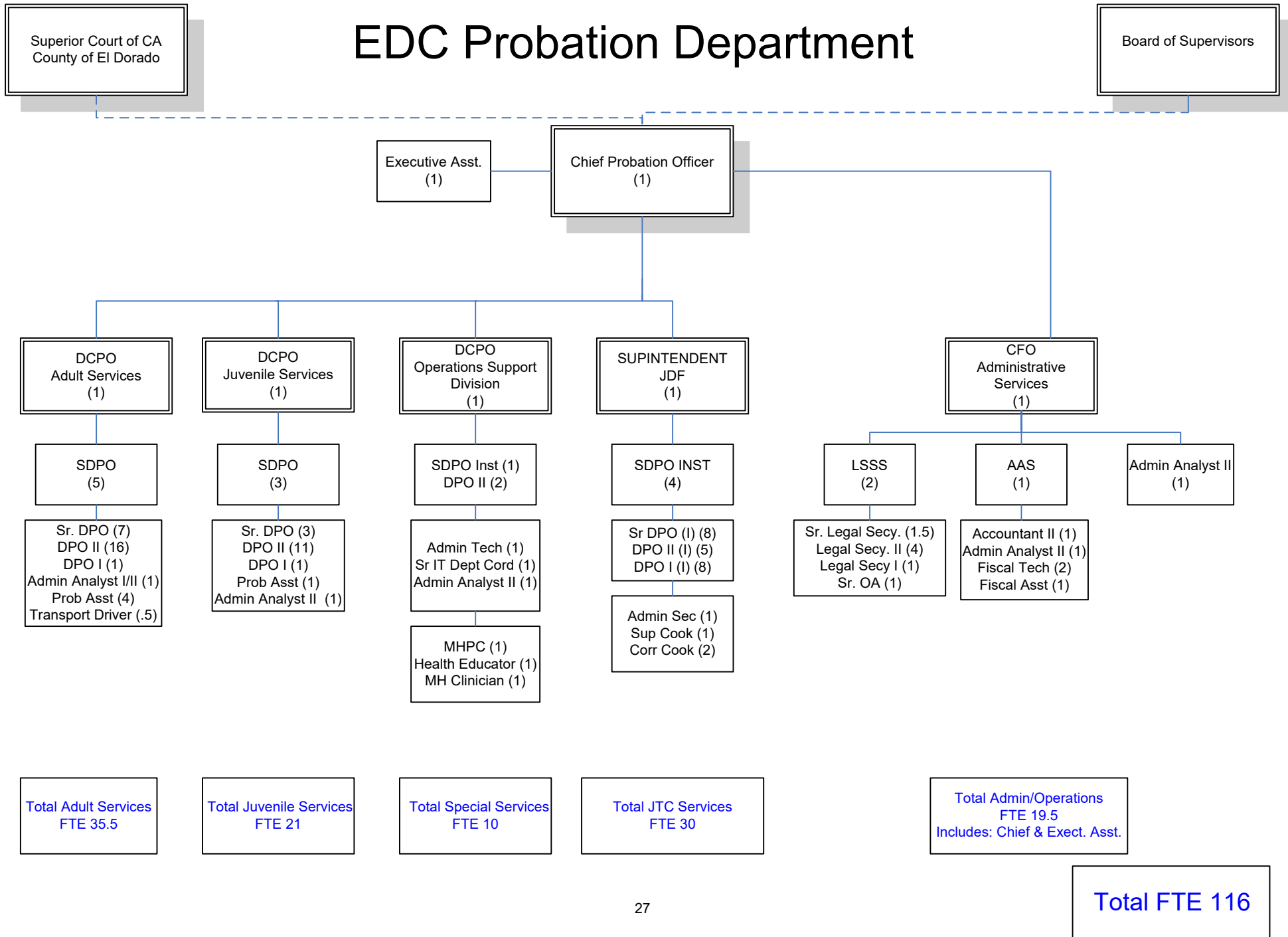
Organizational Charts

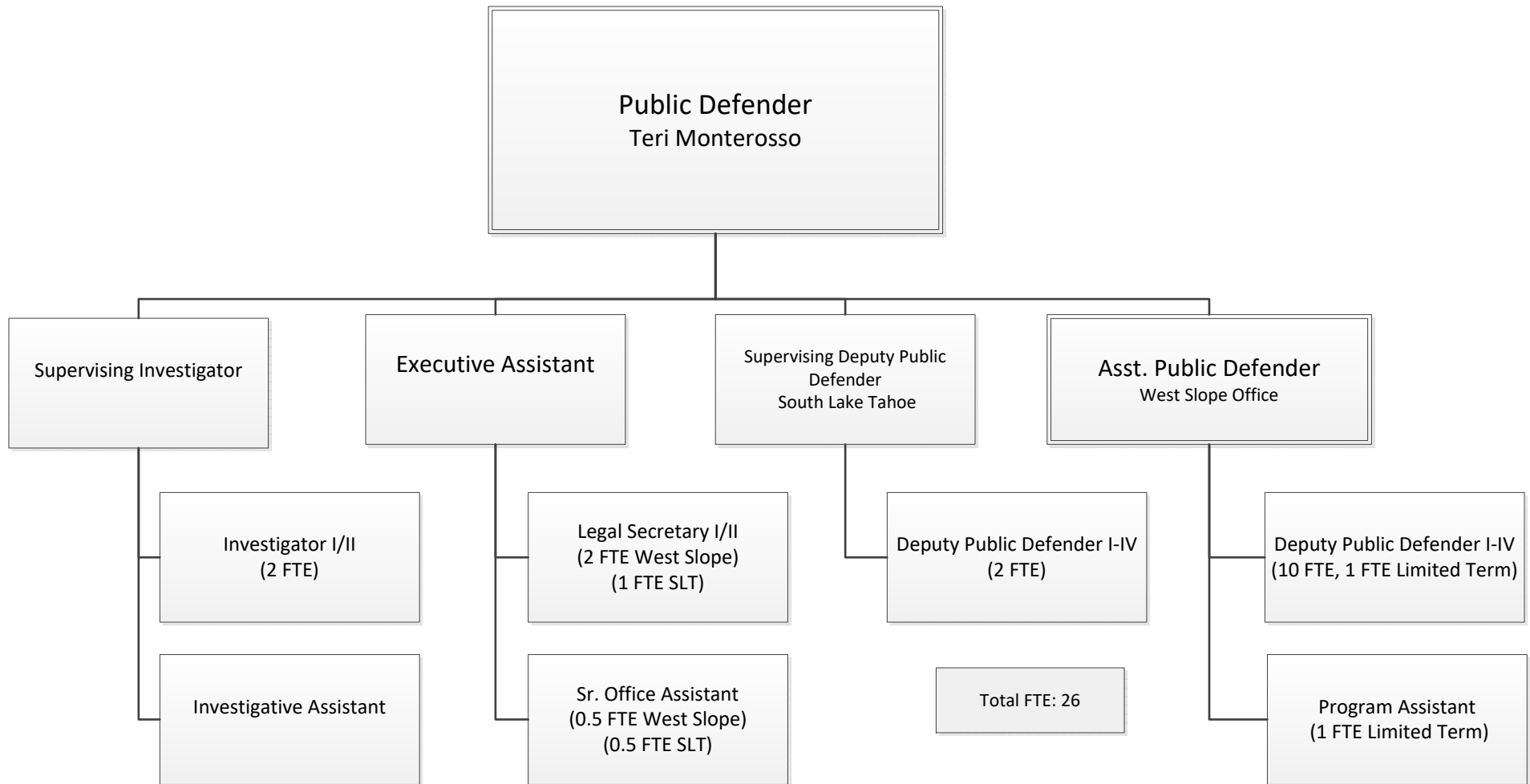
RECOMMENDED BUDGET • FY 2021-22



Total FTE: 38.85

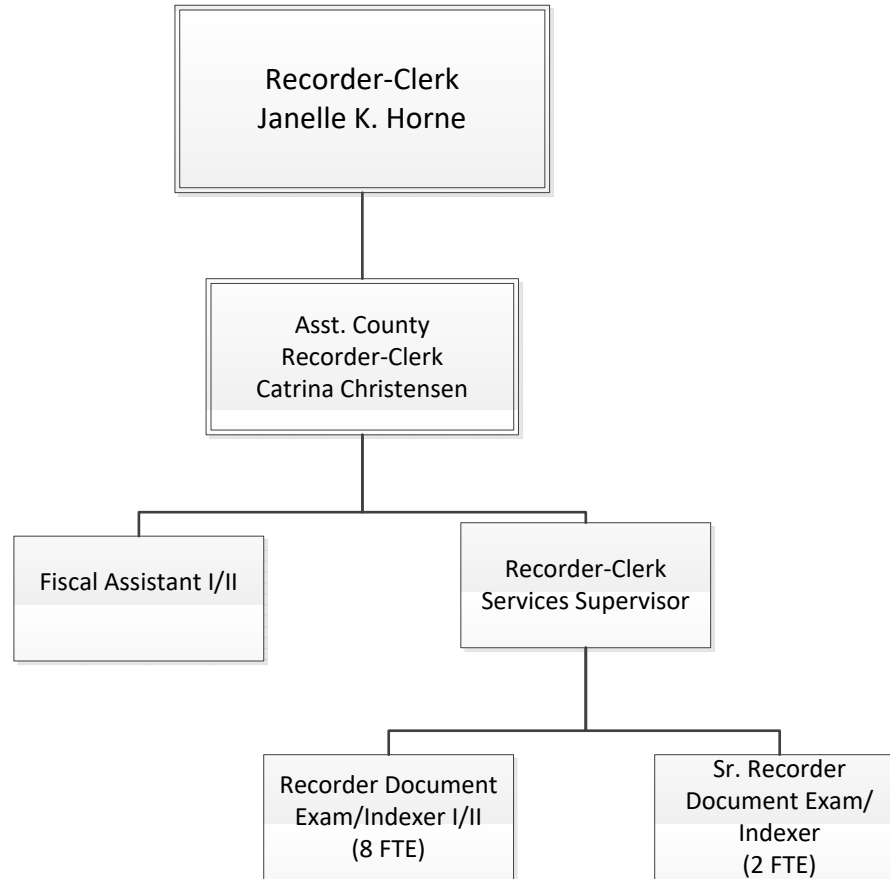






Organizational Charts

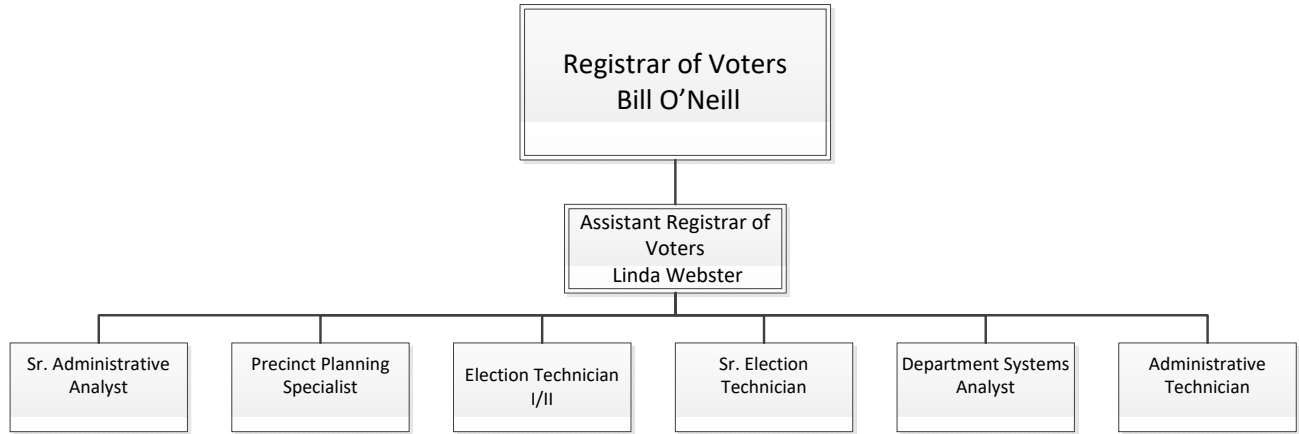
RECOMMENDED BUDGET • FY 2021-22



Total FTE: 14

Organizational Charts

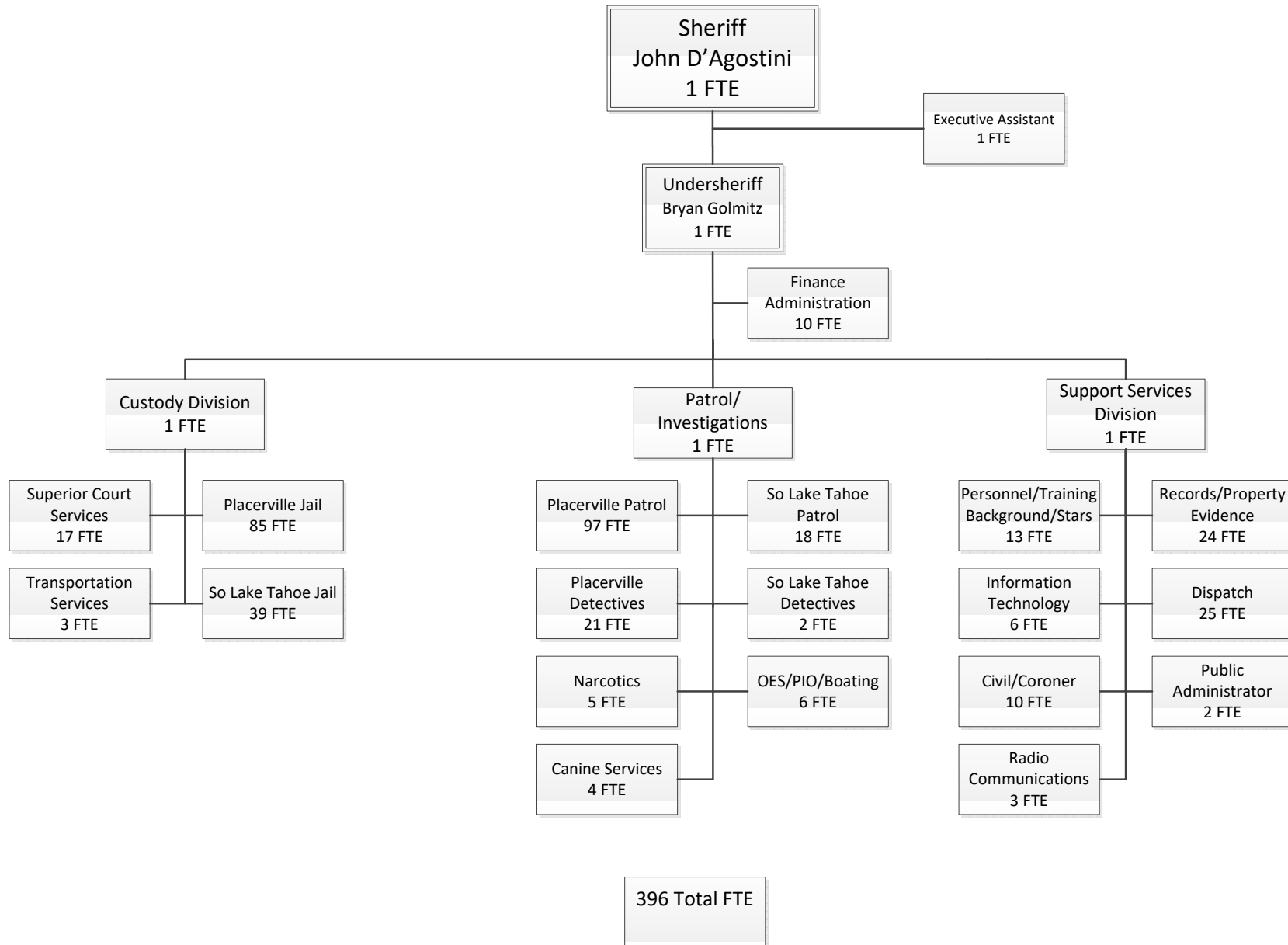
RECOMMENDED BUDGET • FY 2021-22

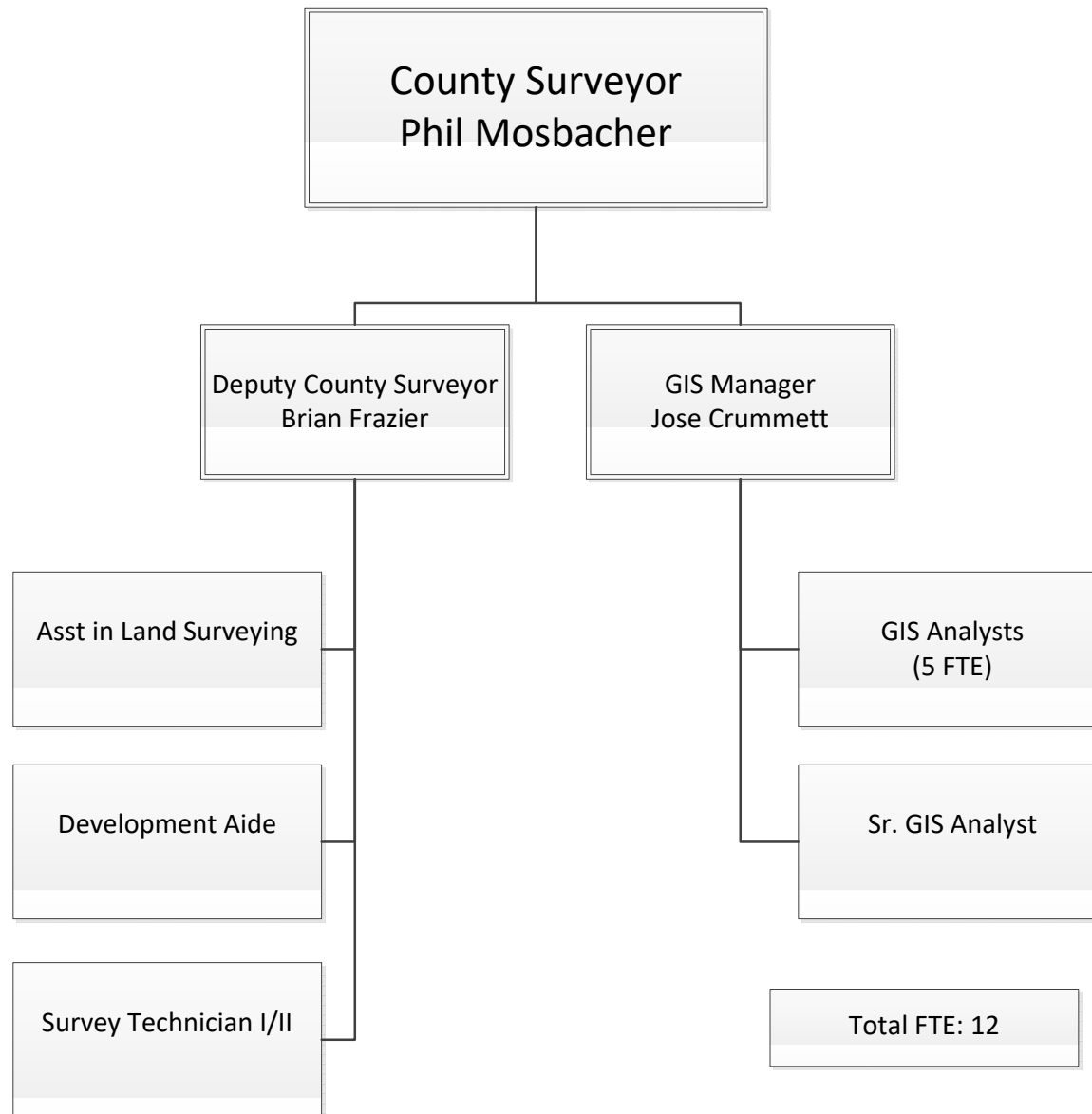


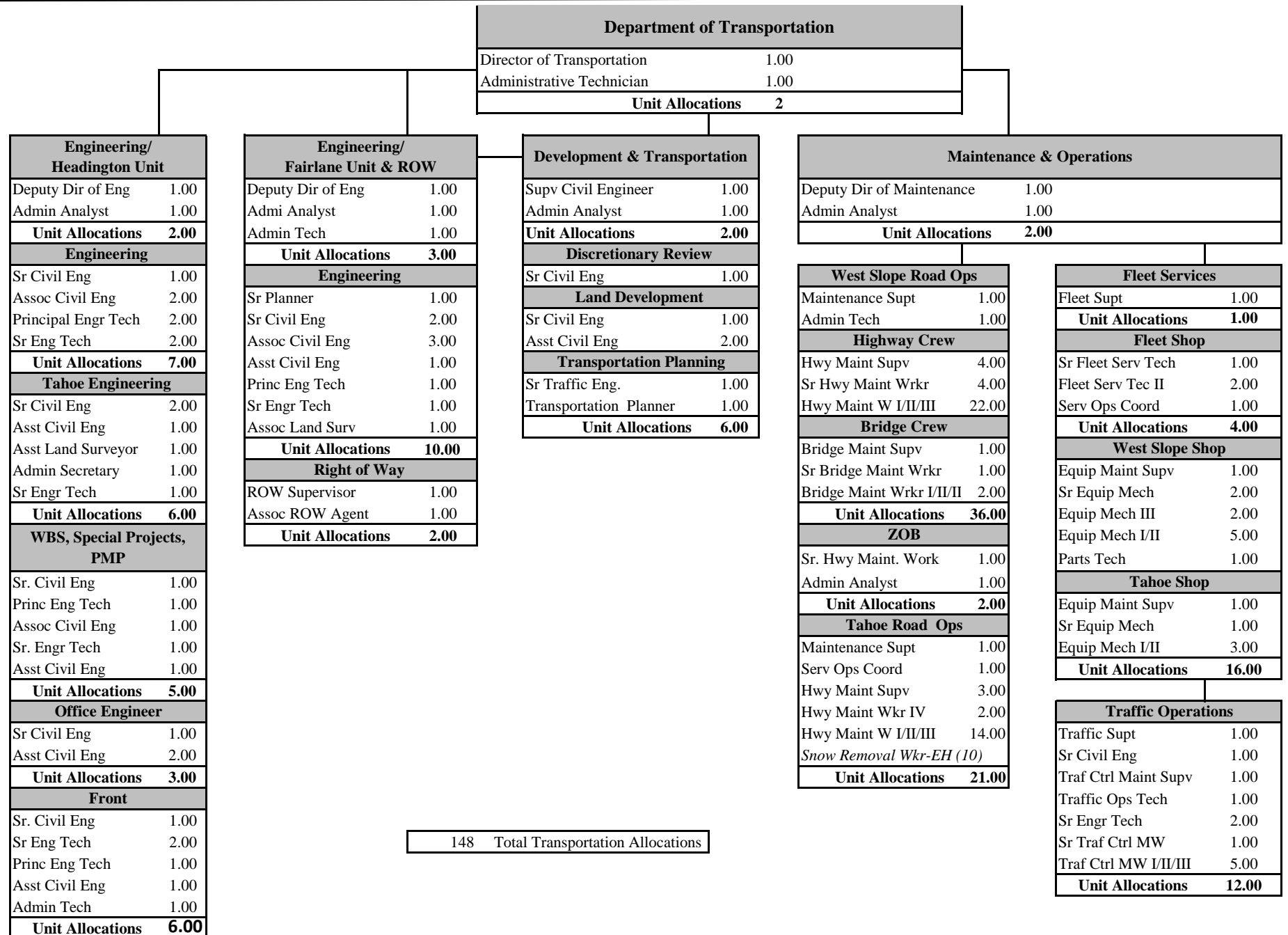
Total FTE: 8

Organizational Charts

RECOMMENDED BUDGET • FY 2021-22

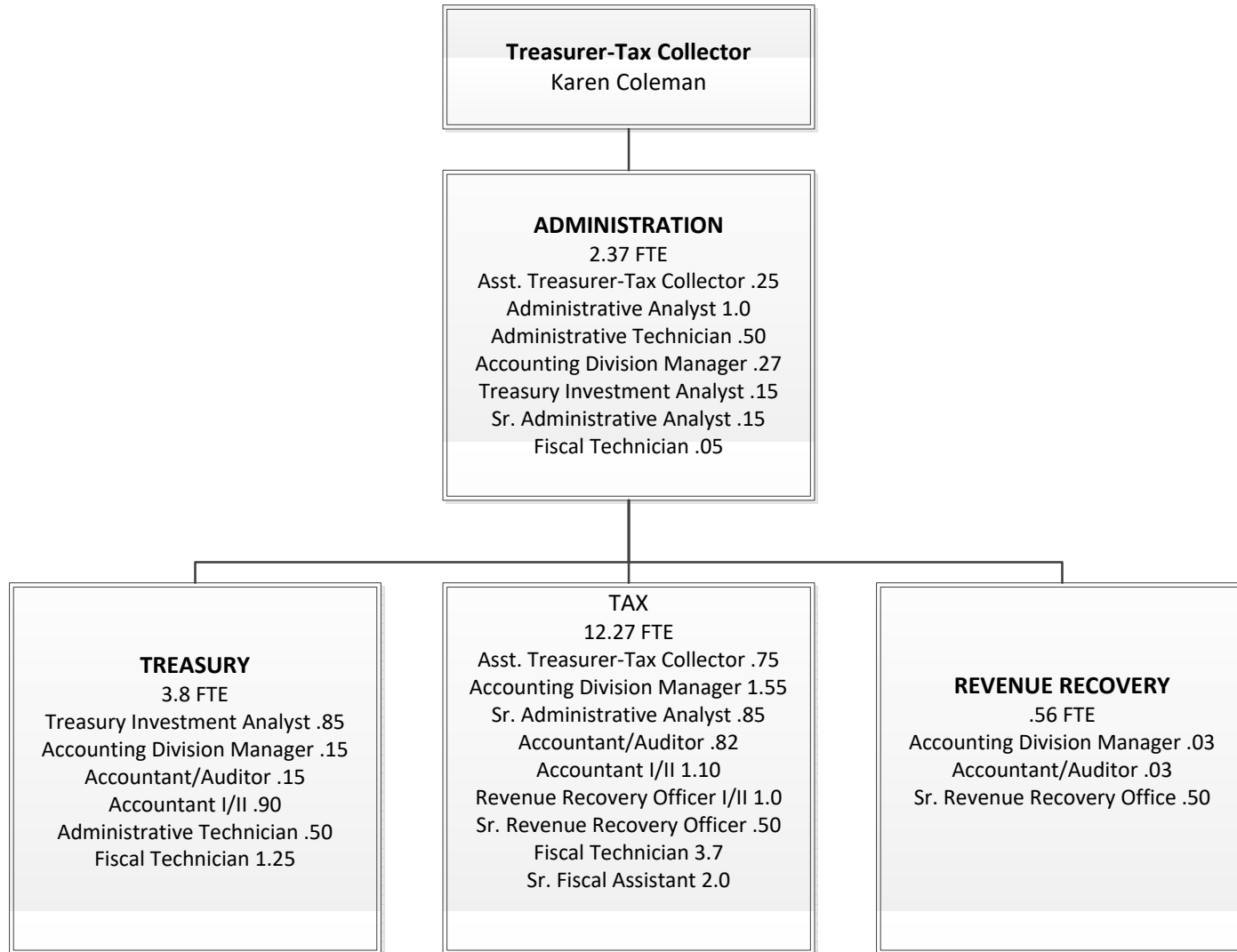






Organizational Charts

RECOMMENDED BUDGET • FY 2021-22



TOTAL FTE: 20