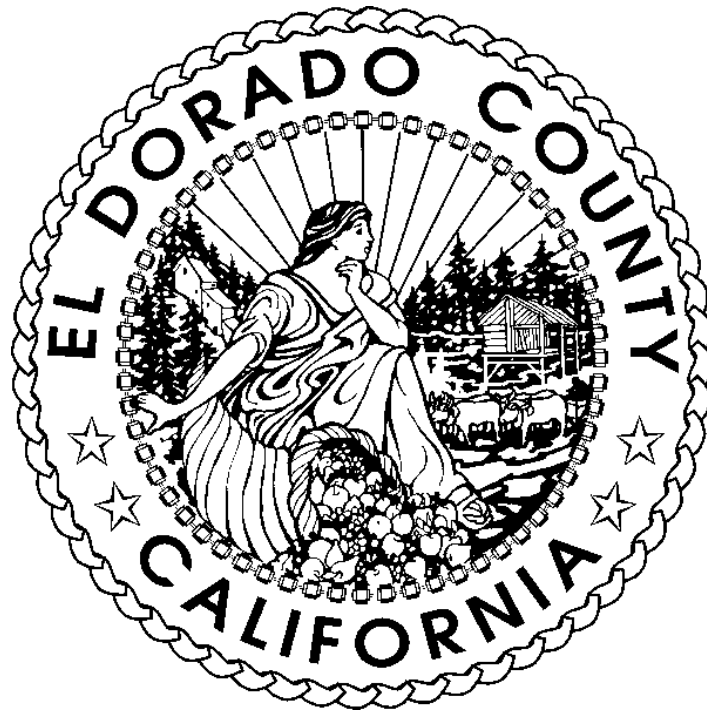


**EL DORADO COUNTY
VOTER REGISTRATION AND ELECTIONS**



**VOTER'S CHOICE ACT
ELECTION ADMINISTRATION PLAN
REVISED
JANUARY 2022**

El Dorado County Election Administration Plan
TABLE OF CONTENTS

Introduction2

SECTION 1 - VOTER EDUCATION AND OUTREACH PLAN.....5

 Requirements5

 Education and Outreach with Language Minority Communities9

 Education and Outreach with Disability Communities10

SECTION 2 - ELECTION ADMINISTRATION PLAN VOTE CENTER MODEL ..13

 General.....13

 Ballot Access.....13

 Vote Center Essentials14

 Ballot Drop Box Essentials16

 Vote Center and Drop Box Location Maps17

 Additional Considerations17

LIST OF APPENDICES.....18

El Dorado County Elections
ELECTION ADMINISTRATION PLAN
E.C. 4005(a)(10)(I)

INTRODUCTION

The passing of S.B. 450, the Voters Choice Act (VCA) in 2016, permits counties to adopt the Vote Center model. Currently 85% of El Dorado County's registered voters cast their ballots via vote-by-mail. In March 2020, the County began offering its voters more options for in person voting by changing its in-person voting model from the Precinct model to Vote Centers, consistent with the Voters Choice Act (VCA).

The first election utilizing Vote Centers was the March 2020 Statewide Primary. This revised Election Administration Plan's purpose is to update voters of El Dorado County since implementation of the VCA. This Plan describes the vote-by-mail process, current locations of Vote Centers and ballot drop off locations as well as the plan for voter education and outreach.

El Dorado County Election Department (County) has established both a Voting Accessibility Advisory Committee (VAAC) and a Language Accessibility Advisory Committee (LAAC). Both committees have provided important input and will continue to be a fundamental component of election administration for the County. Vote Centers offer expanded access to ADA Voters by including at least three accessible voting devices at each Vote Center, as well as the Language Line program to assist non-English speaking voters with their language needs.

The County is required by the VCA to prepare a 2-year review of the Election Administration Plan (EAP). The County conducted a public meeting to receive input from voters on changes they would like to see to the plan and has considered the input received from that meeting in the selection of Vote Center locations and preparing this revised EAP.

Vote-By-Mail

The Vote Center Model gives voter's more options to cast their ballot. Since implementation, **all** voters have been mailed a ballot 29 days before an election along with instructions outlining their options to cast their vote by mail or go to any Vote Center in the County to vote in person. Voters with disabilities, as well as overseas voters, military personnel and military spouses may take advantage of the Remote Accessible Vote-By-Mail System (RAVBM).

Vote Centers and Ballot Drop Boxes

The minimum number of vote centers and ballot drop box locations are pre-defined in the VCA. This EAP is in compliance with all criteria of the VCA for the placement/location of vote centers and drop boxes. The law requires among other criteria that all locations be accessible to voters with disabilities, near population

centers, public transportation, as well as low-income and language minority communities. The County has also considered the underserved, remote areas of the County for Vote Center and Drop Box Locations.

The County received input from its Voter Accessibility and Language Accessibility Committees, various stakeholders, and community interest groups to select vote center and ballot drop off locations. Additionally, the County used U.S. Census Data and GIS mapping along with other available data to ensure the most optimal locations are utilized.

The number of registered voters determines the location and number of Vote Centers and Ballot Drop Boxes 88 days prior to any election. For purposes of this revised EAP, the number of Vote Centers and Drop Boxes is based on the total registered voters in El Dorado County on the date this revision was drafted.

The County will have a minimum of 14 Vote Centers. Three Vote Centers will open 10 days prior to the election, and all 14 centers will be open 3 days prior to the election and on Election Day. All vote centers will be open for a minimum of 8 per day prior to Election Day and from 7:00 AM to 8:00 PM on Election Day, and each will be staffed with a minimum of 5 Election Workers. Voters can vote in person at any Vote Center or may deposit their completed VBM packet at any of the Drop Box and Vote Center sites. Voters can also return their ballot by mail.

Vote Centers offer expanded access to ADA accessible voting devices, with at least three devices at each Vote Center. The County will recruit bilingual election workers and each vote centers will be equipped with Language Line software on a tablet to ensure all voters with limited English proficiency are served.

Vote Centers will give voters the ability to cast their ballot in person utilizing paper ballots or an ADA accessible ballot marking device, and request and receive a replacement ballot regardless of where they live in the County. Vote Centers also enable Voters to update their registration, and those who have not registered by the close of registration (14 days prior to an election) to Conditionally Register to Vote (CVR), and cast a provisional ballot through Election Day.

Vote Centers have secure access to the County's Election Management System (EMS), allowing Vote Center staff to verify, in real time, the voting status of each voter. All Vote Centers are ADA-compliant, and Elections personnel are on site to assist voters with specific needs.

Vote Centers adhere to the California Secretary of State's security standards, the ROV's security procedures, regulations in the California Elections Code, and the California Voting System Use Procedures. This includes, but is not limited to, ensuring all Equipment at the Vote Center is sealed, stored, delivered and used in compliance with those regulations.

El Dorado County has 14 Ballot Drop Boxes available no less than 28 days before the election and on Election Day. Six Drop Boxes are drive up accessible and are open 24 hour per day. All other Drop Boxes are open during the regular business hours of the

facility in which they are located. All Drop Boxes are available until 8:00 PM on Election Day.

A list of current Vote Center and Ballot Drop-off locations, along with Vote Center and Ballot Drop off location maps are included in the Addenda.

Voting Technology

In June of 2019 the County purchased a new Image Cast Voting Systems (ICVS) from Dominion Voting Systems (DVS). The deployment included a minimum of three Image Cast X (ICX) accessible ballot-marking devices at each vote center as well as a Mobile Ballot Printing (MBP) module to allow printing ballots on demand in all required languages at Vote Centers. The RAVBM system is available for those who request an accessible VBM ballot.

Each Vote Center is equipped with a network of personal computers linked to the department's Election Information Management System (EIMS) through a secure connection. The EIMS includes the voter registration database, enabling Vote Center staff to validate each voter's registration and status and syncs with VoteCal in real time.

Fiscal Impact

The fiscal impact of VCA since implementation has increased election expenditures because of the purchase of supplemental Vote Center equipment and the increase outreach costs including postage. The County expects those increases will moderate and decrease in the long term through learned efficiencies and less equipment purchases. Vote Centers are open longer and although the number of poll workers needed decreased, because of the extended number of days Vote Centers are open; the cost associated with poll workers has not.

Conclusion

El Dorado County looks forward to continuing to provide voters with more choices to cast their ballot because of the adoption of the Voter's Choice Act. The new election model has resulted in many positive outcomes including an increase in voter participation, providing greater accessibility to voters with disabilities, improving our voting systems and technology, and strengthening our election infrastructure security.

Section 1, Voter Education and Outreach Plan and Section 2, Elections Administration Plan specifically outline El Dorado County’s compliance with SB450 referencing to the sections of the Election Code that have been amended, added and repealed as a result of the passage of SB450.

REQUIREMENTS:

SECTION 1 - VOTER EDUCATION AND OUTREACH

The El Dorado County Elections Department has updated their voter outreach and education plan to take better advantage of what is more effective with informing voters about upcoming elections, options for how and where to vote, as well as continued outreach to the disabled and non-English speaking voters. We will utilize traditional media, social media, mailings to voters and other public communications outlets.

Additionally, the County will resume in-person meetings with minority language and disabled communities to ensure they have an opportunity to provide input and are educated about the upcoming elections and accommodations made available.

Media for Access to Ballots and Public Service Announcements (PSA) For Election Notice

§4005(a)(10)(I)(i)(II), §4005(a)(10)(I)(i)(VIII)

The County will utilize multiple media outlets and PSA’s in accessible formats to promote voter participation and the options about how to vote. The Media Outlets and methods we will use include the following:

- County Wide
 - 2-mailers prior to each election
 - Include details about Vote Center and Drop Box hours and locations, redistricting and options on how to cast their ballot
 - Utilize the Voter Information Guide more effectively by using the back cover for outreach and including greater detail on options to vote for different demographics
 - Advocacy and Community Group Presentations
 - League of Women Voters
 - Legal Defense Fund
 - Political groups
 - Other County Department partnerships
 - HHSA
 - Child Support
 - Veterans Organizations
 - Email outreach for each election
- Seniors
 - HHSA
 - Ponte Palmera Senior Living

- P'Ville Senior Center
- Four Seasons at El Dorado Hills
- Engage our elderly extra help for outlets
- Community Events-Booth and/or Presentations
 - Crab Feed
 - City/Town Events
 - Placerville
 - El Dorado Hills
 - Car Shows
 - El Dorado County Fair
 - Neighborhoods Night Out
- Advertising
 - Social Media
 - Next Door
 - Facebook
 - Instagram
 - TikTok
 - Bus Shelter Graphics
 - Public Service Messages/Features
 - Mtn. Democrat
 - Tahoe paper

In order to reach all voters, including those with disabilities, the County will produce PSAs in visual and audio formats to continue promotion of the Vote Center Model, upcoming elections and the availability of the Election Departments toll-free assistance hotline. The PSAs will be targeted to radio stations, television stations, newspapers (such as Mountain Democrat, Tahoe Tribune, and Georgetown Gazette), billboards and public transit stations.

The PSAs will include information on the availability of accessible voting devices at all Vote Centers and how to use them along with the method to request access to the County's Remote Accessible Vote By Mail (RAVBM) program to mark and submit an accessible ballot.

Wherever possible, the County will collaborate with neighboring Counties that are implementing or have implemented Vote Centers to co-op PSAs in outlets that may be common amongst them.

1-B Community Presence to Educate Voters on The Voter's Choice Act
 §4005(a)(10)(I)(i)(III)

The County will participate in community events to promote the Vote Center Model and provide information directly to the attendees of a wide variety of events. We will coordinate with our community partners, as well as LAAC and VAAC to identify opportunities to educate our voters, offer demonstrations of the voting equipment, and explain the process of how to request and obtain an accessible ballot. We will ensure

we reach all areas of the community giving voters many opportunities to learn about the Vote Centers and their voting options. Some of the events and partners include but are not limited to are:

- 1) The Election Department's VAAC and LAAC (Ongoing throughout the year)
 - a. Meetings include voting system demonstrations and informational updates
 - b. Materials development with VAAC and LAAC members, and presented for distribution within their communities

- 2) Presence at various Community Events (brief list)
 - a. Business and Showcase Film Mixer
 - b. Luau by the Pool
 - c. Kids Expo
 - d. Music on the Boulevard
 - e. Day in Paradise
 - f. El Dorado County Fair
 - g. Summer Spectacular
 - h. Sample the Sierra Marketplace (South Lake Tahoe)
 - i. Lobster on the River
 - j. Mother Lode Rehabilitation Enterprises Inc. (MORE) Annual Chili Cookoff
 - k. Park Community Music Festival and Car Show
 - l. Music in the Park-Tahoe Paradise
 - m. Living History-0Coloma
 - n. Crab and Chowder Gala
 - o. Music in the Divide
 - p. Festival of Lights
 - q. Christmas Parade

- 3) Presentations to County's diverse populations:
 - a. Neighborhood associations
 - b. County Board of Supervisors
 - c. County Disability Advisory Committee
 - d. City and Town Councils
 - e. School District Boards
 - f. Special Districts Boards
 - g. County Central Committees and Political Committees
 - h. Faith-based communities
 - i. Service providers (such as Independent Living Centers, California Council of the Blind)
 - j. Voting Advocacy groups (such as League of Women Voters, Alta California Regional Center, El Dorado County Disability Advocate Commission (DAC), Mother Lode Rehabilitation Enterprises Inc.(MORE).
 - k. Philanthropic organizations (such as Soroptimists, Rotary, Kiwanis,)
 - l. Community Colleges
 - m. El Dorado County Public Libraries

- 4) Recurring Outreach opportunities
 - a. Farmer's Markets (varies by season)
 - b. High School Education programs (April, September, and as invited)

- c. Marshall Medical Educational Resources
- d. Adult Education and English as a Second Language (ESL) programs
 - 1. (Through school districts)

1-C Use of Resources For Voter Education And Outreach.
 §4005(a)(10)(I)(i)(VII)

The County will continue to allocate the necessary resources to ensure voters are informed of their options to vote. The budget information for the November 2020 General Election along with the education and outreach budget for June and November 2022 is below.

| Outreach Expense | 2020 General | 2022 Primary | 2022 General |
|-----------------------|-----------------|-----------------|-----------------|
| Direct Mail-Print | \$13,000 | \$16,000 | \$16,000 |
| Direct Mail-Postage | \$25,600 | \$28,000 | \$28,000 |
| Bus Shelter Graphics | \$4,525 | \$4,525 | \$4,525 |
| Social Media | \$0 | \$1,500 | \$1,500 |
| Outreach Events | \$1,500 | \$2,500 | \$2,500 |
| Graphic Artist | \$6,600 | \$3,000 | \$3,000 |
| TOTAL/ELECTION | \$51,225 | \$55,525 | \$55,525 |

1-D Direct Contacts with Voters Providing Information on The Upcoming Election and Promoting the Toll-Free Voter Assistance Hotline.
 §4005(a)(10)(I)(i)(X)

The County will contact each El Dorado County registered voter a minimum of two times by postcard and/or email to provide information on the upcoming election and the availability of the County toll-free assistance hotline. The contacts may also provide information on when to expect the Voter Information Guide, voting options, important dates, Vote Center and Drop Box locations and hours and guidance on where to get more information.

1-E Postage-Paid Postcard for Requesting Materials in an Alternate Language or an Accessible Format VBM
 §4005(a)(8)(B)(iii)

All registered voters will receive a postage-paid postcard with their County Voter Information Guide for requesting materials in languages other than English and to request a VBM ballot in an accessible format. Instructions will be included in the Guide and on the county Election website for completing and returning the postcard.

EDUCATION AND OUTREACH WITH THE LANGUAGE MINORITY COMMUNITIES

§4005(a)(10)(I)(i)(I)

The County established a Language Accessibility Advisory Committee (LAAC) in March 2019 to advise and assist with implementation of federal and state laws relating to access to the electoral process by voters with limited-English proficiency. The LAAC is comprised of local residents who advocate on behalf of the County's minority language communities.

Voter Education Workshop for Minority Language Voters

4005(a)(10)(I)(i)(VI), §4005(a)(10)(I)(i)(VI)(ia)

The El Dorado County Elections Department will hold voter education workshops for El Dorado County's non-English speaking citizens. The workshops will be in-person and will occur 2 times in the months leading up to the Primary Election and 2 times in the months leading up to the General Election. The meetings will provide an opportunity for the County's language communities to express any specific requests they may have and will offer demonstrations of the Language Line tool available at each Vote Center. LAAC members will assist in selecting the workshop date and notifying those voters. Publicity for the meeting will occur no less than 10 days in advance of the meeting date. One meeting prior to each election will be held in South Lake Tahoe in partnership with the Family Resource Center.

The Elections Department will engage the County's Health and Human Services Department to assist in targeting those voters that may benefit from these meetings.

1-F Inform Voters of the Upcoming Election and Promote the Toll-Free Voter Assistance Hotline with Media Serving Language Minority Communities

§4005(a)(10)(I)(i)(I)

Information sharing with language minority communities, including information about the Vote Centers, voting options, and toll-free access hotline for assistance, will be a multi-pronged approach with the goal to include:

- 1) Newspapers (such as Mountain Democrat, Tahoe Tribune, Georgetown Gazette,
- 2) Radio stations
- 3) Social Media and Department's Website
 - a) County Facebook [El Dorado County Elections Department - Home | Facebook](#)
 - b) County Twitter [County of El Dorado \(@CountyEIDorado\) | Twitter](#)
 - c) County newsfeed subscription lists [Email Subscription Service Elections - El Dorado County](#)
- 4) Public Transit Messaging (El Dorado Transit, Paratransit, Dial a Ride, Buses, and Transit Hubs)
- 6) Materials sharing with such groups as community partners, elected officials for their newsletters, cities, special districts, school districts,

- community based organizations, faith-based organizations, and Public Information Officers throughout the county
- 7) Media Information Sessions, providing opportunity for all media sources to obtain interviews and printed information about the Vote Centers
 - 9) Public Service Announcements, broadly distributed to outlets serving the County in multiple formats
 - 10) County Departments (such as Health and Human Services, Human Assistance, Veteran Services, Probation, and Child Support Services)

1-G Identifying Language Minority Voters

§4005(a)(10)(I)(i)(V)

The County uses the voter's language preference selection shown on their voter registration form to identify language minority voters. Voters may also contact us by telephone or email to update their language preference or provide their language preference to election officials during an election. The US Census data is also used to identify communities of voting age populations that are 'less than English proficient' who may need language assistance.

1-H Public Service Announcement for Minority Language Citizens

§4005(a)(10)(I)(i)(IX)

The County will use Public Service Announcements to inform voters in minority language communities of upcoming elections and the toll-free assistance hotline. The PSAs will be distributed through minority language television, radio, and newspapers including Latino radio stations 99.9 FM La TriColor and 104.3 La Suavacita and Latino television station Telemundo 33. The LAAC will provide assist with developing the PSA content along with recommendations of which non-English media outlets would be most appropriate.

EDUCATION AND OUTREACH WITH THE DISABILITY COMMUNITIES

The County established a Voting Accessibility Advisory Committee (VAAC) in March 2019 to advise and assist with access to the electoral process by voters with disabilities. The VAAC is comprised of local residents who advocate on behalf of the disability community.

Voter Education Workshop for the Disability Community

§4005(a)(10)(I)(i)(VI), §4005(a)(10)(I)(i)(VI)(ib)

The El Dorado County Elections Department will hold in-person voter education workshops to educate voters with disabilities about the options available to them to vote including during in-person voting at the Vote Centers. The workshops will occur 2 times in the months leading up to the Primary Election and 2 times in the months leading up to the General Election. The goal of reaching as many disabled voters as possible. The VAAC members will assist in selecting the workshop locations, dates and notification of voters with disabilities about the workshop. The workshop will include the options available to them to vote in person as well as other options to vote such as RAVBM, use

of drop boxes and vote by mail. Information about the workshop will be announced at least 10 days in advance of the meeting date.

The Elections Department will engage the County's Health and Human Services Department, Disability Rights California and MORE (Motherlode Occup. Rehab Education) to assist in targeting those voters that may benefit from these meetings.

1-I Inform Voters of the Availability of a Vote By Mail Ballot in an Accessible Format and the Process for Requesting such a Ballot
§4005(a)(10)(I)(i)(II)

The County will share information with the disability community, including information about the Vote Centers, voting options (including RAVBM), and (800) 730-4322, the County's toll-free access hotline for assistance. Briefly these include:

- 1) Materials sharing with organizations providing services and support to people with physical, sensory, intellectual, and developmental disabilities, such as Independent Living organizations, Alta California Regional Center, El Dorado County Disability Advocate Commission (DAC), Mother Lode Rehabilitation Enterprises Inc.
- 2) Community partners, elected officials for their newsletters, cities, special districts, school districts, faith-based organizations, and Public Information Officers throughout the county
- 3) Television (public access and broadcast stations)
- 2) Newspapers (such as Mt. Democrat, Georgetown Gazette, Tahoe Tribune and local print version as well as on-line only publications)
- 3) Radio stations
- 4) Social Media and Department's Website
 - a) County Facebook [El Dorado County Elections Department - Home | Facebook](#)
 - b) County Twitter [County of El Dorado \(@CountyElDorado\) | Twitter](#)
 - c) County newsfeed subscription lists
[Email Subscription Service Elections - El Dorado County](#)
- 5) Public Transit Messaging (El Dorado Transit)
- 6) Material sharing with VAAC
- 7) Media Information Sessions, providing opportunity for all media sources to obtain interviews about the Vote Center Model
- 8) Public Service Announcements, broadly distributed to outlets serving the County in multiple formats
- 9) County Departments (such as Health and Human Services, Human Assistance, Veteran Services)

1-J Website Has Publicly Available Accessible Information
§4005(a)(10)(I)(i)(IV)

Information on the County website ([Elections - El Dorado County](#)) is in accessible formats and is publicly available. This includes the Election Administration Plan and

other information related to the Voter's Choice Act, as well as information about registering to vote and getting involved in the election process. Election specific information is also available on the website in an accessible format.

The Website will be updated to include a page specifically for voters with disabilities. Information to be provided will include the following:

- 1) All voters will receive a vote by mail (VBM) ballot
- 2) All Vote Centers will have three accessible voting devices with instructions on how to use the device
- 3) The method for requesting, marking and submitting an accessible ballot through the County's Remote Accessible Vote by Mail (RAVBM) program
- 4) Information on how to access the Voter Information Guide in an accessible format
- 5) Frequently asked questions specific to the Disability Community
- 6) VAAC meeting information including past and current agendas

SECTION 2 - ELECTION ADMINISTRATION PLAN

GENERAL

2-A Toll-Free Phone Access

§4005(a)(10)(I)(vii)

The County offers toll-free phone support during all business hours. Staff maintains a language service for use when providing assistance to voters in required languages.

Toll-free hotline (800) 730-4322

California Relay Service (Speech and Hearing Impaired) (530) 642-9432

BALLOT ACCESS

2-B Access to A VBM Ballot by Voters with Disabilities

§4005(a)(10)(I)(ii)

Receiving A VBM Ballot by Mail

All El Dorado County registered voters will receive a VBM ballot packet by mail for each election. The enclosed ballot can be marked and returned in the identification enveloped included with the VBM packet.

Requesting an Accessible Ballot - Vote Centers

All El Dorado County registered voters can use one of the three accessible ballot marking devices at any Vote Center. Voters check in, request an accessible ballot and are provided with a key card that populates the accessible device with their ballot. The ballot can be marked using the touch screen display, provided audio tactile device or their own assistive technology. The accessible voting machines will be arranged to allow all voters the opportunity to cast their ballot privately and independently.

Requesting a Remote Accessible Ballot

El Dorado County registered voters with disabilities may opt to go on-line, through the Remote Accessible Vote By Mail (RAVBM) system, to request a downloadable ballot. RAVBM provides voters with disabilities the ability to request a VBM ballot be sent electronically to the voter from a VRE-authorized website. The electronic ballot can be downloaded to the voter's computer, marked using the voter's own assistive technology and then printed. This ballot can be returned in the same manner as any VBM ballot: through the mail, placed in a Drop Box, or at any Vote Center.

Requesting a Replacement Ballot

Any voter may request a replacement ballot by telephone at (530) 621-7480, by faxing a request to (530) 626-5514, by appearing at a Vote Center, at the County Election office, or through the on-line RAVBM system.

VOTE CENTER ESSENTIALS

2-C Security of the Voting Process at Vote Centers

Secure Vote Center Voting

§4005(a)(10)(I)(iv)

All voting conducted at Vote Centers follows the Secretary of State's security standards, ROV's security procedures, and regulations in the California Elections Code and the California Voting System Use Procedures. This includes, but is not limited to; ensuring all equipment at the Vote Center is sealed, stored, delivered and used in compliance with these regulations. In addition, our current procedures require the majority of the election workers be present when the site is open.

Security and Contingency Plans

§4005(a)(10)(I)(iv)(VIII)

Preventing Disruption, Continuing Vote Center Operations

§4005(a)(10)(I)(iv)(VIII)(ia), §4005(a)(10)(I)(iv)(VIII)(ib)

All staff, including those working the Vote Centers, and those providing technical and compliance support, will attend extensive training on the operation of the voting equipment, setting up a Vote Center, assisting and processing voters, securing sensitive equipment each voting night, and the proper procedures in case of an emergency.

Under California voting system requirements, all certified equipment must run on battery power in the event of a power outage. All locations have a dedicated phone. Emergency responders will receive a list of all Vote Center locations. Each Vote Center will be provided with emergency procedures and be provided with an instruction manual for the operation of a Vote Center and processing voters.

Staff will immediately work to resolve the disruption at a polling site, and each disruption will have its own response. Generally, if a single Vote Center is disrupted, county staff will immediately redirect voters to other Vote Centers, and will inform local police, the Secretary of State's office, and provide media updates to ensure voters are informed. If there is a natural disaster or other disturbance occurs that affects a Vote Center or ballot drop-off site's physical location, additional notifications, signage and staff will be available to direct voters to an alternate location. Should all activities at a Vote Center be ceased, staff will immediately secure that Vote Center's voting equipment and account for all

voting materials in accordance with California Election Code and the Ballot Manufacturing and Finishing guidelines. The County will attempt to open a replacement Vote Center and extensively notice the change.

2-D Vote Centers: Number to Be Established, Locations, and Hours of Operations to the Extent Available At the Time of Publication
§4005(a)(10)(I)(vi)

The Total Number of Vote Centers.
§4005(a)(10)(I)(vi)(I)

Based on approximately 138,000 currently registered voters, the County will establish a minimum of 14 Vote Centers, 3 open for ten days prior to and including Election Day and an additional 11 open for 3 days prior to and including Election Day.

The Location and Hours of Each Vote Center
§4005(a)(10)(I)(vi)(III), §4005(a)(10)(I)(vi)(VI)

The County has worked in partnership with the LAAC, VAAC, and community members to identify Vote Center and Drop Box locations. County staff created data maps for each criteria listed in Section 4005(a)(10)(B) using data collected from the 2020 decennial Census, the American Community Survey, and the current County registration file.

Although the County has been conducting elections under the VCA for two years, because some original sites did not produce the expected turnout or were not operationally efficient, we made some changes to the locations. In addition, since the initial implementation of Vote Centers, our voter registration has increased significantly requiring an addition Vote Center; not all locations for upcoming elections have been finalized. All Vote Centers will be open continuously for a minimum of 8 hours per day and from 7 a.m. to 8 p.m. on Election Day. Based on available information at this time a list of the anticipated locations can be found in Appendix A, which will be updated as locations are confirmed for each election. The list will be included in election materials provided to each registered voter.

2-E Staffing Vote Centers:
§4005(a)(10)(I)(vi)(IX)

The County anticipates a minimum of five staff at each Vote Center.

2-F Services for Voters with Disabilities
§4005(a)(10)(I)(vi)(X)

Each Vote Center has a minimum of three fully accessible touchscreen voting devices. These devices are certified by the Secretary of State for use in California elections and allow each voter to mark their ballot independently and privately. Mitigation equipment such as threshold ramps, doorstops, or cones to

designate ISA parking is provided to all Vote Center locations. Staff at all Vote Centers receive training on assisting voters with specific needs and the use of the accessible touchscreen voting devices and have been approved by the VAAC.

2-G Design and Layout of Vote Centers

§4005(a)(10)(I)(vi)(XI)

Layout guidelines are used to ensure voting booths and accessible ballot marking devices are placed in a manner that allows a voter mark their ballot independently and privately. Layouts take into account the accessibility needs of voters, and are adjusted to accommodate the varying shapes and room sizes of each location. See Appendix D for sample layouts.

BALLOT DROP BOX ESSENTIALS

2-H Ballot Drop Boxes: Number to Be Established, Locations, and Hours Of Operations To the Extent Available At The Time Of Publication

§4005(a)(10)(I)(vi)

The Total Number of Drop Boxes to Be Established

§4005(a)(10)(I)(vi)(II)

Based on current voter registration of approximately 138,000, the county has established 14 Ballot Drop Box locations; open 28 days prior to and through Election Day.

The Location and Hours of Operation of Each Ballot Drop Box

§4005(a)(10)(I)(vi)(IV), §4005(a)(10)(I)(vi)(VII)

The County collaborated with the LAAC, VAAC, and community members to locate drop boxes in well-known, fully accessible facilities. The list of Drop Boxes and their hours of operation are included in Appendix B, which is updated should any drop box locations change. The complete list is included in election materials provided to each voter and on the department's website.

The County office has six exterior Drop Box available 24 hours each day.

VOTE CENTER AND DROP BOX LOCATION MAPS

2-I Location Maps

§4005(a)(10)(I)(vi)(V)

Maps showing the location of Vote Centers and Ballot Drop Boxes are shown in Appendix C. These maps will be updated as required.

ADDITIONAL CONSIDERATIONS

2-J Estimated Costs and Savings under This Plan

§4005(a)(10)(I)(v), §4005(g)(2)

The County has experienced cost increases to comply with significant expanded requirements for community and voter engagement. The County has also experienced an increase of approximately 11% in voter registration since implementation of VCA and anticipates decreases in on-going costs per voter.

Following each election, the County prepares an election cost comparison report, which is posted on the county election website in an accessible format.

2-K After Election Activities

Address Significant Disparities in Voter Accessibility and Participation, As Required By Subdivision (g)

§4005(a)(10)(I)(iii)

Following each election conducted under the Voter's Choice Act, the County reviews comments received from voters and solicits input from the LAAC, VAAC, and community partners on data collected in compliance with Section 4005(g). The County makes reasonable efforts to address significant disparities identified on an item-by-item basis.

Assistance to the SOS with Report to the Legislature

§4005(g)(1)(A)

Provide Election Statistics to Secretary of State

The County provides the statistical data listed Elections Code 4005(g) to the Secretary of State within six (6) months of each election.

LIST OF APPENDICES

Appendix A – Vote Center Locations and Hours List

Appendix B – Drop Box Locations and Hours List

Appendix C – Location Maps

- Vote Centers
- Drop Boxes

Appendix D – Vote Center Sample Layout

Appendix A-Vote Center Locations and Hours (SUBJECT TO CHANGE)

EL DORADO COUNTY VOTE CENTER LOCATIONS

ALL VOTE CENTERS WILL BE OPEN FROM 7:00A M to 8:00 PM ON ELECTION DAY

11 DAY VOTE CENTERS OPEN TEN DAYS PRIOR TO ELECTION DAY & ELECTION DAY

El Dorado Hills:

California Welcome Center 2085 Vine St, Suite 105 8:30AM-4:30PM

Placerville:

Placerville Library 345 Fair Lane 8:30AM-4:30PM

South Lake Tahoe:

Lake Tahoe Community College 1 College Dr 8:30AM-4:30PM

4 DAY VOTE CENTERS OPEN THREE DAYS PRIOR TO ELECTION DAY & ELECTION DAY

Cameron Park:

Cameron Park CSD 2502 Country Club Dr 8:30AM-4:30PM

TO BE DETERMINED 8:30AM-4:30PM

El Dorado Hills:

Fire Station 85 1050 Wilson Blvd 8:30AM-4:30PM

El Dorado Hills Library 7455 Silva Valley Pkwy 8:30AM-4:30PM

Greenwood:

California Conservation Corp 4411 State Hwy 193 8:30AM-4:30PM

Placerville:

Town Hall 549 Main St 8:30AM-4:30PM

El Dorado

Union Mine High School 6530 Koki Lane 8:30AM-4:30PM

Pollock Pines:

Pollock Pines Community Ctr 2675 Sanders Dr 8:30AM-4:30PM

Shingle Springs:

El Dorado County Child Support 3883 Ponderosa Rd 8:30AM-4:30PM

Somerset:

Pioneer Park Community Center 6740 Fairplay Rd 8:30AM-4:30PM

South Lake Tahoe:

California Conservation Corp 1949 Apache Ln 8:30AM-4:30PM

ALL VOTE CENTERS WILL BE OPEN FROM 7:00 AM TO 8:00 PM ON ELECTION DAY

Appendix B-Drop Box Locations and Hours (SUBJECT TO CHANGE)

DROP BOX LOCATIONS AND HOURS

IMPORTANT- Hours listed for each drop box location are the business hours for the facility at the time of printing. **ALL drop boxes will be locked at 8:00 PM on Election Day**

Cameron Park:

| | | |
|---------------------------|-----------------------|------------------|
| Cameron Park Library | 2500 Country Club Dr | 24 Hour Drive Up |
| Gold Country Ace Hardware | 4121 Cameron Park Dr. | 7:30AM-7:00PM |

Camino:

| | | |
|---------------------|-----------------|----------------|
| Wine Country Market | 3590 Carson Rd. | 5:00AM-11:00PM |
|---------------------|-----------------|----------------|

Cool:

| | | |
|---------------------|----------------------|----------------|
| Holiday Market Cool | 5030 Ellinghouse Dr. | 6:00AM-10:00PM |
|---------------------|----------------------|----------------|

El Dorado:

| | | |
|------------------------|-------------------|---------------|
| Logtown Country Market | 6142 Crystal Blvd | 7:00AM-8:00PM |
|------------------------|-------------------|---------------|

El Dorado Hills:

| | | |
|-------------------------------|------------------------|------------------|
| El Dorado Hills Park and Ride | 4640 Post St. | 24 Hour Drive Up |
| El Dorado Hills Library | 7455 Silva Valley Pkwy | 24 Hour Drive Up |
| California Welcome Center | 2085 Vine St. #105 | 8:30AM-5:00PM |

Georgetown:

| | | |
|---------------------|---------------|-----------------|
| Mar Val Food Stores | 6049 Front St | 24 Hour Outdoor |
|---------------------|---------------|-----------------|

Placerville:

| | | |
|----------------------------|------------------|------------------|
| El Dorado County Elections | 2850 Fairlane Ct | 24 Hour Drive Up |
|----------------------------|------------------|------------------|

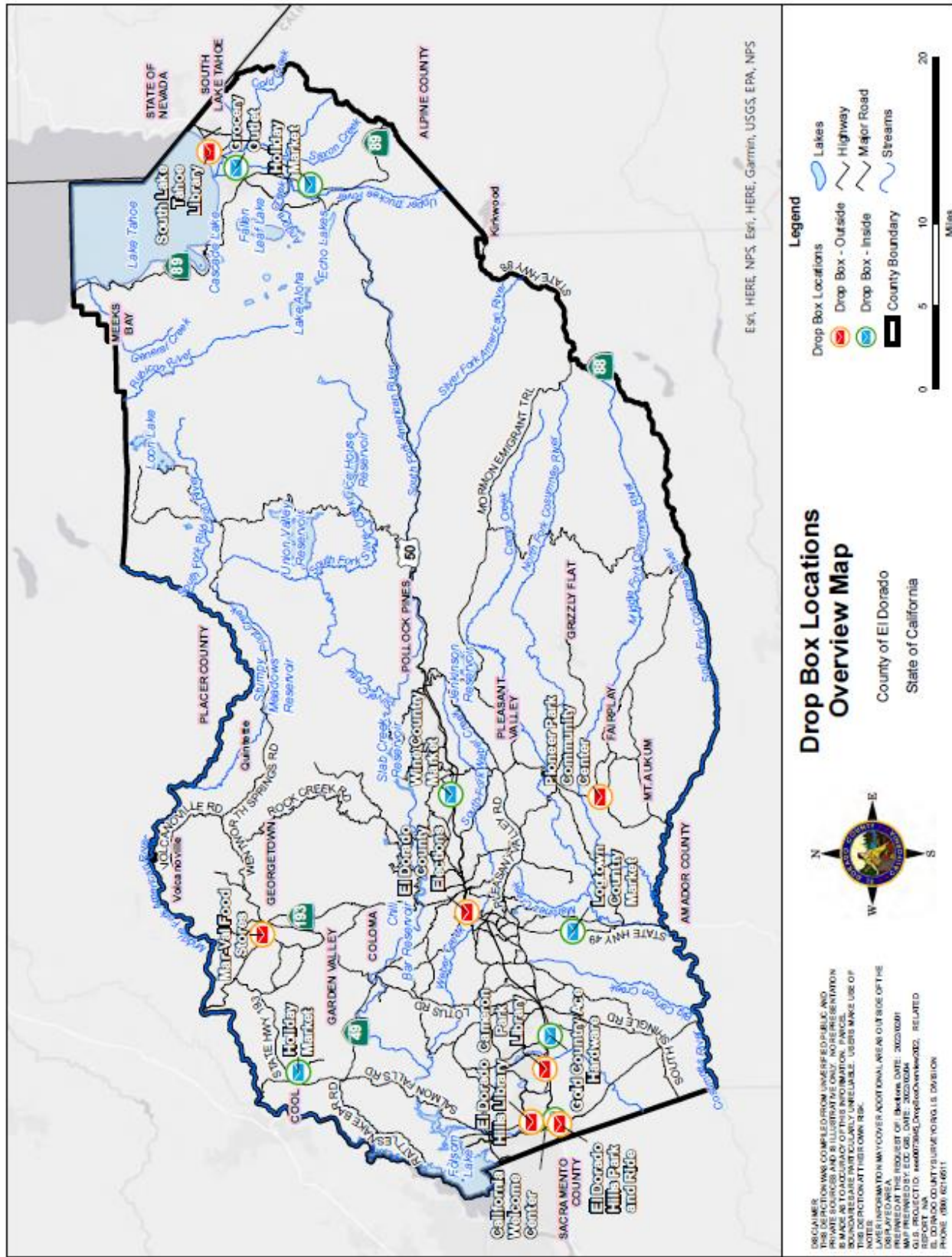
Somerset:

| | | |
|-------------------------------|------------------|------------------|
| Pioneer Park Community Center | 6740 Fairplay Rd | 24 Hour Drive Up |
|-------------------------------|------------------|------------------|

South Lake Tahoe:

| | | |
|---------------------------------|-----------------------|------------------|
| South Lake Tahoe Library | 1000 Rufus Allen Blvd | 24 Hour Drive Up |
| Holiday Market South Lake Tahoe | 2977 US Hwy 50 | 7:00AM-9:00PM |
| Grocery Outlet South Lake Tahoe | 2358 Lake Tahoe Blvd | 7:00AM-10:00PM |

**ALL DROP BOXES WILL BE LOCKED AT 8:00PM
ELECTION DAY**



Appendix D – Sample Vote Center Layout

