

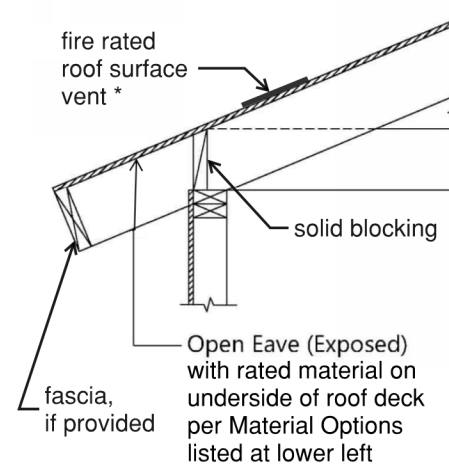
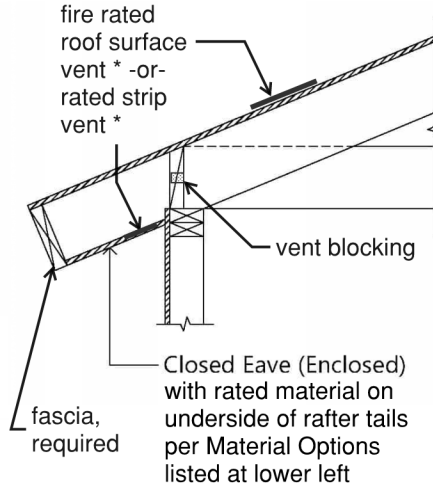
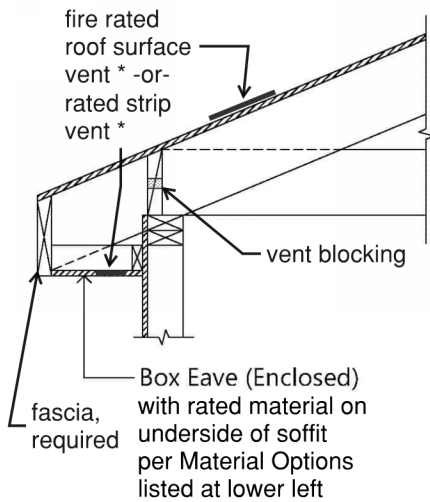
WILDLAND URBAN INTERFACE - EXTERIOR EAVES, CEILINGS, PROJECTIONS

2025 CA WUI Code, Section 504: Exterior Coverings

Enclosed Roof Eaves (504.3): The exposed underside of enclosed roof eaves and soffits shall be protected on the exposed underside by one or more of the Material Options listed at lower left.

Open Roof Eaves (504.3.1): The exposed roof deck on the underside of unenclosed roof eaves shall consist of one or more of the Material Options listed at lower left.

Roof Rake Eaves (504.3.1): The exposed rake eaves shall be protected per the Open Eave or Enclosed Eave requirements.

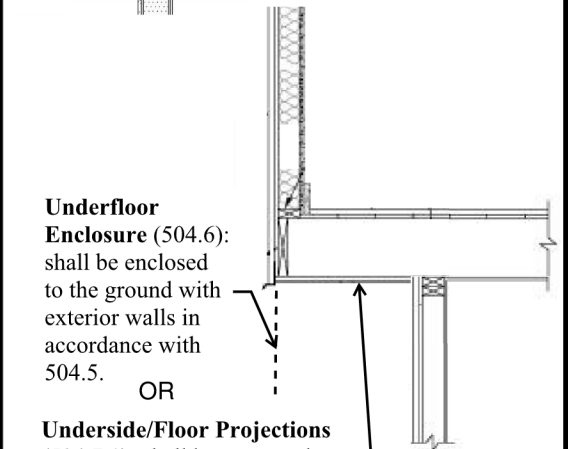
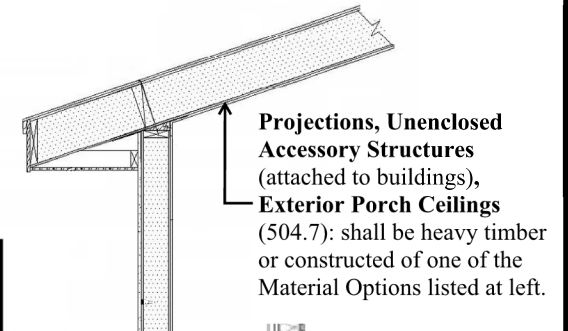
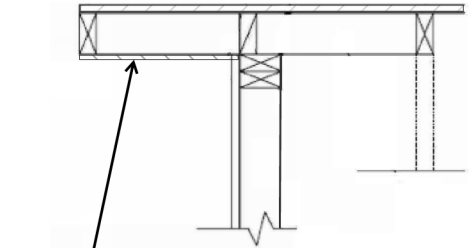


ENCLOSED EAVE (Option 1)

ENCLOSED EAVE (Option 2)

OPEN EAVE (Option 3)

* **Ventilation Openings** shall comply with 504.10 (see opposite page).



504.3 Enclosed Eaves	504.3.1 Open Eaves	504.7 Projections	504.7.1 Underside	504.3 Fascias, as applicable	504.7.3.1 Decking Surfaces	Material Options for Exterior Coverings
•	•	•	•	•	•	Noncombustible material.
•	•	•	•	•	•	Ignition-resistant building material per 503.2, labeled for exterior use.
•	•	•	•	•	•	Materials with not less than 1-hour fire-resistance on the exterior side as tested by ASTM E119 or UL 263.
•	•	•	•	•	•	Fire-retardant-treated wood per CBC 2303.2, labeled for exterior use.
•				•		2-inch nominal dimension lumber.
	•	•	•			One layer of 5/8-inch Type X gypsum sheathing applied behind an exterior covering/cladding/ceiling.
•		•	•			Respective assemblies with an underside that meets performance criteria per 504.7.2 tested to ASTM E2957.
•		•	•			Respective assemblies with an underside that meets performance criteria per SFM Standard 12-7A-3.
	•	•	•			Ext. portion of a 1-hr fire-resist-rated ext. assembly, tested by ASTM E119 or UL 263...including GAFRDM.
				•	•	Materials complying with both SFM Standard 12-7A-4 & 503.2.4; or tested by ASTM E2632 & E2726.

See referenced code sections for possible exceptions.

GAFRDM = Gypsum Association Fire Resistance Design Manual

APPLICATION: New applicable buildings, structures, additions or alterations located in any Fire Hazard Severity Zone (SRA: All Zones; LRA: High, Very-High Zones) or Wildland-Urban Interface Fire Area. (101.3.1,501.1,503.1)

Check with respective Fire Department for local amendments that may apply.