

# Communities Without Limits

---

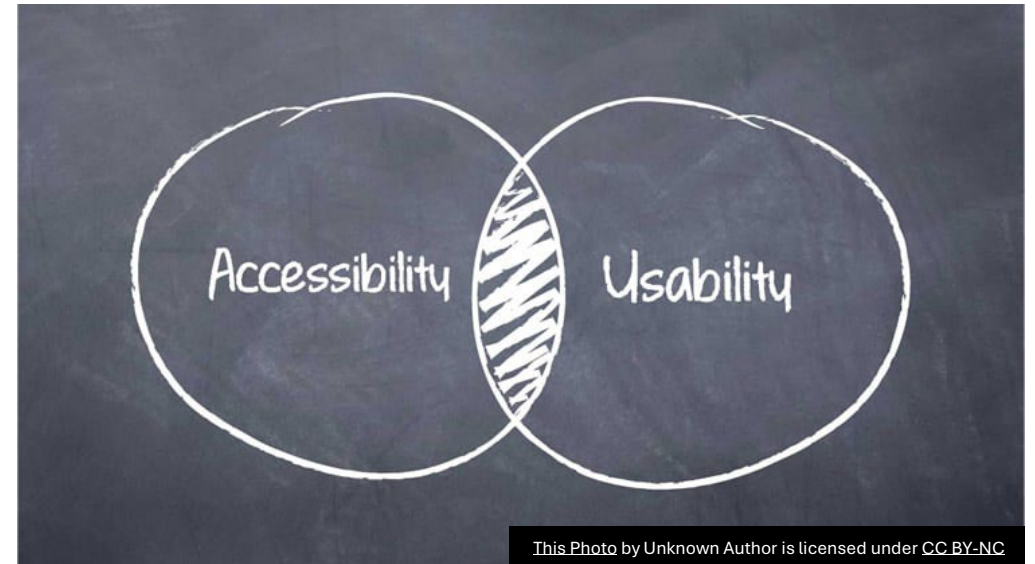
Building Safety Month May 25-31

This week highlights how accessible, inclusive design helps create communities where everyone can participate, move safely, and feel welcome.



# What This Week Focuses On

- The importance of accessibility in homes and public buildings
- How inclusive design benefits everyone
- Features that support safe, independent movement
- Creating community spaces that are easy to navigate
- Designing for people of all abilities



# Accessible Routes & Entryways

- Wide, clear walkways increase safety and mobility
- Ramps and gentle slopes help people navigate entrances
- Handrails and smooth surfaces support stability
- Automatic doors and lever handles improve ease of use

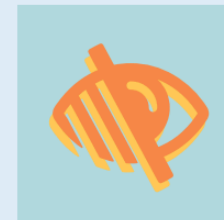
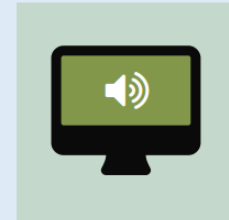
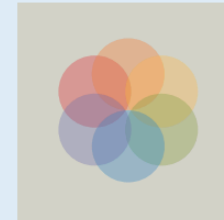


PEDESTRIAN  
ACCESS

## Universal Design Features

- Spaces designed to be useful to people of all ages and abilities
- Wider hallways and doorways improve comfort and safety
- Lever-style handles and easy-to-reach controls support independence
- Flexible, adaptable layouts work for a variety of needs
- Universal design creates spaces that work well for everyone, not just a few

## Designing for **accessibility**



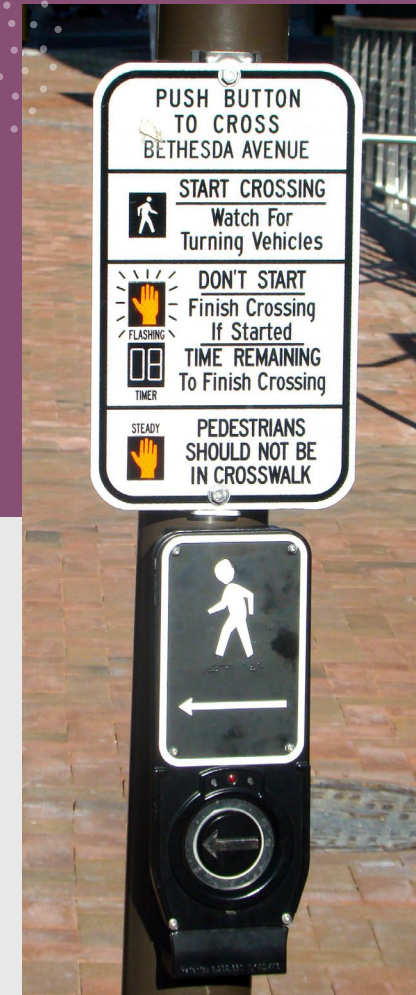
# Accessible Bathrooms Create Safer, More Comfortable Spaces for Daily Use

- Grab bars provide stability and support
- Clear floor space improves maneuverability
- Adjustable-height fixtures help more people use the space comfortably
- Slip-resistant flooring reduces fall risks



# Visual & Audible Notification Systems

- Multiple alert types ensure everyone receives important information
- Alarms may include sound, flashing lights, or vibration
- Helps notify people with hearing or visual limitations
- Vital for emergencies in homes, workplaces, and public buildings





# Inclusive Community Spaces

- Smooth paths and clear signage improve navigation
- Seating options support a variety of needs
- Accessible event layouts encourage community participation
- Thoughtfully designed spaces help everyone feel welcome

# Why Accessibility Matters

Helps people of all ages and abilities move safely

Encourages independence and comfort

Supports equal access in public and private spaces

Makes buildings easier to use for families, older adults, and people with disabilities



## Designing with Everyone in Mind

- Small adjustments can make big differences
- Good design works without requiring special accommodations
- Accessibility benefits both individuals and the community
- Inclusive spaces promote dignity and respect

# Ways to Support Accessible Design

- Keep pathways clear of obstacles
- Install proper signage and lighting
- Choose fixtures that are easy to reach and operate
- Advocate for accessibility improvements in local spaces



# Building Communities Without Limits



+

