



COMMUNITY DEVELOPMENT AGENCY

TRANSPORTATION DIVISION

<http://www.edcgov.us/DOT/>

PUBLIC MEETING

El Dorado Trail Extension — Missouri Flat Road to the Town of El Dorado & Missouri Flat Road Bike/Pedestrian Overcrossing

Thursday, July 21, 2016

Begins at 6:30 p.m.

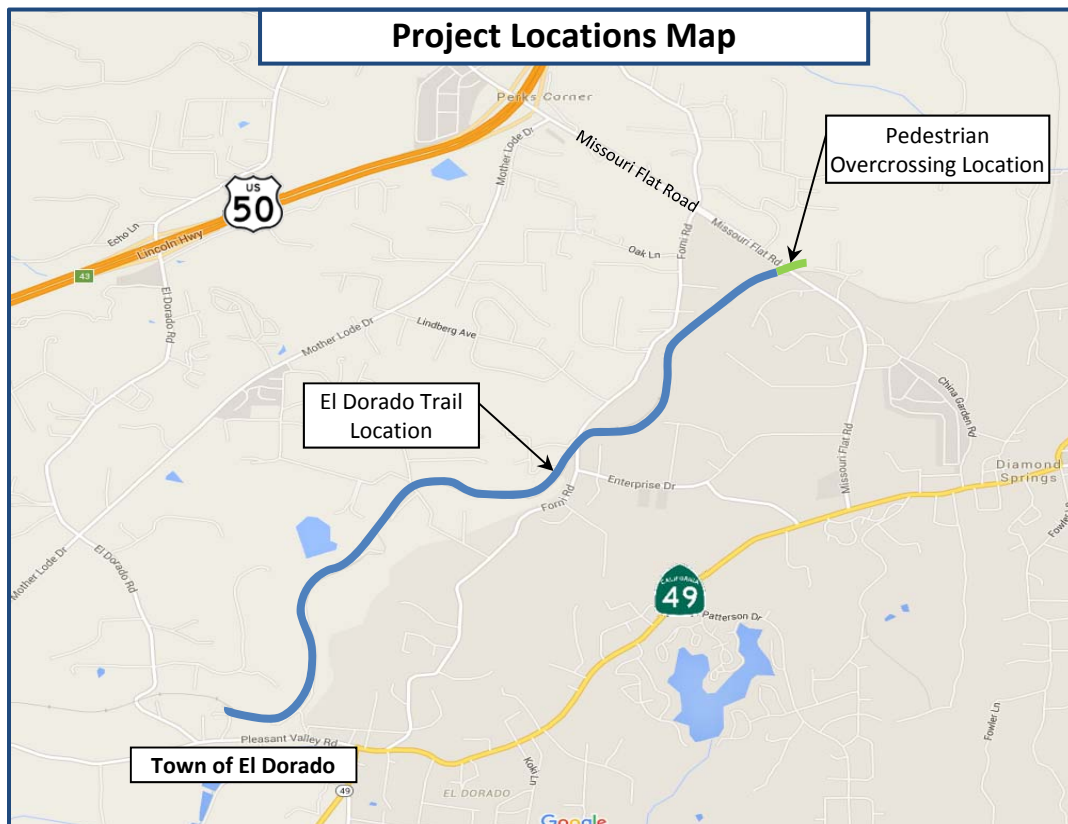
El Dorado County Board of Supervisors Meeting Room
330 Fair Lane (Building A), Placerville, CA 95667

WHAT IS BEING PROPOSED

The County's Transportation Division proposes to build a Class I bike path from Missouri Flat Road to the town of El Dorado and a bike/pedestrian overcrossing over Missouri Flat Road connecting the proposed path to the existing Class I bike path.

WHY YOU SHOULD ATTEND

Residents, business owners, and trail users are invited to attend to obtain updated information on the proposed projects and to provide comments. The presentation will focus on aesthetic options for the overcrossing structure and a status update on the planning and environmental process for the projects. County staff will remain after the presentation to discuss the project details and be available to answer questions.



SPECIAL ACCOMMODATIONS

Individuals requiring special accommodations to attend this public meeting should contact the Transportation Division at (530) 621-5900.