



EL DORADO COUNTY

DEPARTMENT OF TRANSPORTATION

<http://www.edcgov.us/DOT/>

PLACERVILLE OFFICES:

MAIN OFFICE:

2850 Fairlane Court, Placerville, CA 95667
(530) 621-5900 / (530) 626-0387 Fax

CONSTRUCTION & MAINTENANCE:

2441 Headington Road, Placerville, CA 95667
(530) 642-4909 / (530) 642-0508 Fax

LAKE TAHOE OFFICES:

ENGINEERING:

924 B Emerald Bay Road, South Lake Tahoe, CA 96150
(530) 573-7900 / (530) 541-7049 Fax

MAINTENANCE:

1121 Shakori Drive, South Lake Tahoe, CA 96150
(530) 573-3180 / (530) 577-8402 Fax

Mosquito Road Bridge Replacement Project

Department of Transportation Construction Update #12

October 31, 2025

The Mosquito Road Bridge Replacement Project construction has been underway since July 2022. This is the eleventh quarterly construction update for the community:

July 2025

- 1 holiday and 0 non-working days due to weather.
- Continued ongoing work plans / reports generation, review, and approval for segment construction, thermal control, geometry control, and falsework.
- Completed removal and off-haul staging of pier table PERI falsework forms and equipment at Pier 2 & 3.
- Began delivery and assembling form travelers for Pier 2 end span on Pier 2 trestle.
- Began delivery, assembling, and placement of form travelers for Pier 3 end span & main span.
- Completed Drainage System #6 (DS-6) re-design and 18" HDPE pipe welding.
- Completed falsework foundation grading and pile driving at Abutment 1.
- Continued falsework foundation grading and compaction at Abutment 4.
- Completed Pier 2 & 3 drill/bond dowels, and rebar installation for architectural shotcrete at foundations and soldier pile walls.
- 10-Week Mosquito Road closure at the gates from 5/27/25 through 8/2/25.
 - Performed Drainage System #6 work adjacent to the Pier 3 north trestle and switchback on Mosquito Road.
 - Performed monthly crane inspection and maintenance on and adjacent to the Pier 3 north trestle switchbacks on Mosquito Road.
 - Continue falsework supports (bents) construction and shuttle materials from BLM to Abutment 4.
 - County Bridge Maintenance Crews performed annual Mosquito Bridge inspection and maintenance.
 - County Road Maintenance Crews performed annual Mosquito Road pothole and edge patch repairs.
 - Performed various miscellaneous work on and adjacent to Mosquito Road.
- Continued site inspections for erosion control compliance.
- Continued maintenance of storm water erosion control measures as needed site wide.
- Continued site wide roadway sweeping as needed.
- Monitored Pier 2 & 3 inclinometers – (no slope movement).
- Continued deliveries / off-haul of Project column forms, reinforcing bar (rebar), and other materials as needed.
- Continued intermittent flagging and traffic control for equipment and materials deliveries.



7/25/25 – Pier 3 Traveler Platforms Staging & Construction



7/25/25 – Pier 3 Traveler Bottom Platform Hoist



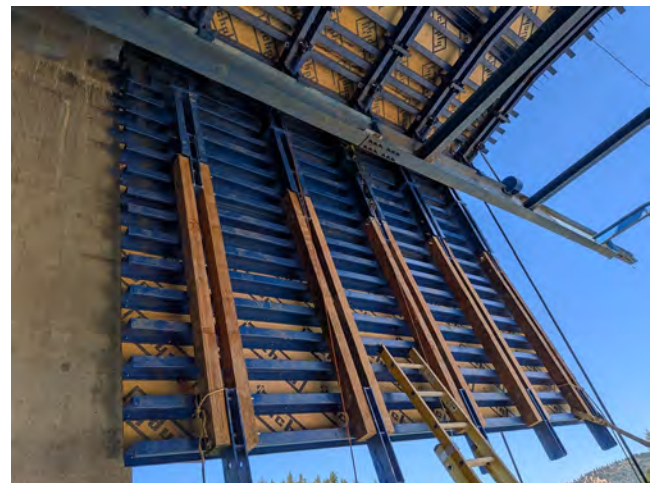
7/25/25 – Pier 3 Mainspan Bottom Platform Placed



7/25/25 – Pier 2 Traveler Equipment Staged at Trestle



7/30/25 – Pier 3 Girder / Overhang Traveler Form Hoist

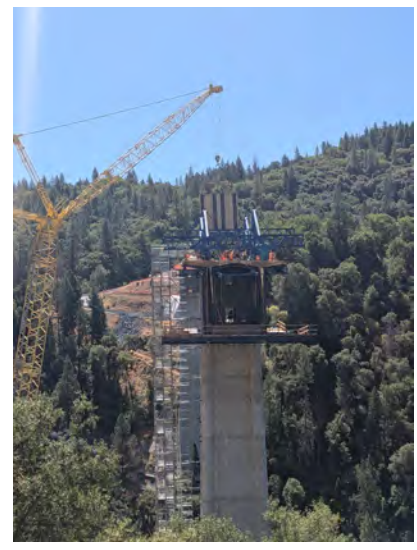


7/30/25 – Pier 3 Girder / Overhang Traveler Form Placed

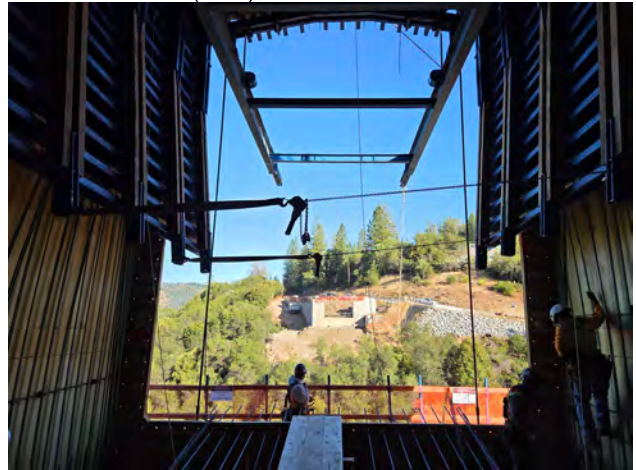
August 2025

- 0 holiday and 0 non-working days due to weather.
- Continued ongoing work plans / reports generation, review, and approval for segment construction, thermal control, geometry control, and falsework.

- Continued delivery, assembling, and placement of form travelers for Pier 2 end span & main span.
- Completed delivery, assembling, and placement of form travelers for Pier 3 end span & main span.
- Completed Pier 3 segments construction P3-1E.
- Began construction of Pier 3 segment P3-1M.
- Finished falsework foundation excavation, grading, compaction, and placed foundation pads at Abutment 4.
- Performed Drainage System #6 work adjacent to the Pier 3 north trestle.
- 10-Week Mosquito Road closure at the gates from 5/27/25 through 8/2/25.
 - Performed monthly crane inspection and maintenance on and adjacent to the Pier 3 north trestle switchbacks on Mosquito Road.
 - Performed various miscellaneous work for site cleanup and installation of safety measures for opening of Mosquito Road.
 - Opened Mosquito Road on 8/2/25
- Continued site inspections for erosion control compliance.
- Continued maintenance of storm water erosion control measures as needed site wide.
- Continued site wide roadway sweeping as needed.
- Continued deliveries / off-haul of Project column forms, rebar, equipment, and other materials as needed.
- Continued intermittent flagging and traffic control for equipment and materials deliveries.



8/01/25 – Mosquito Closure Crane Maint. 8/01/25 – Pier 3 Modular Form Travelers (MFT) 8/04/25 – Placed MFT Deck Soffit

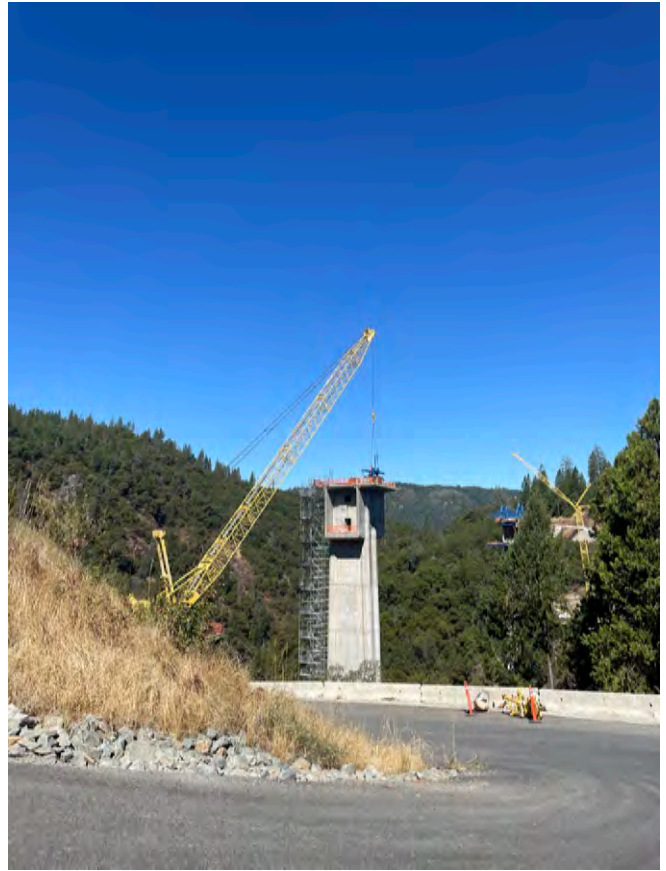


8/04/25 – Abutment 4 End Span Began Falsework Pads

8/07/25 – Pier 3 Segment 1 End Span (P3-1E) Install Girder Rebar



8/08/25 – Pier2 MFT Bottom Platform Constructed & Staged



8/08/25 – Pier 2 Began MFT Equipment Installation on Pier Table



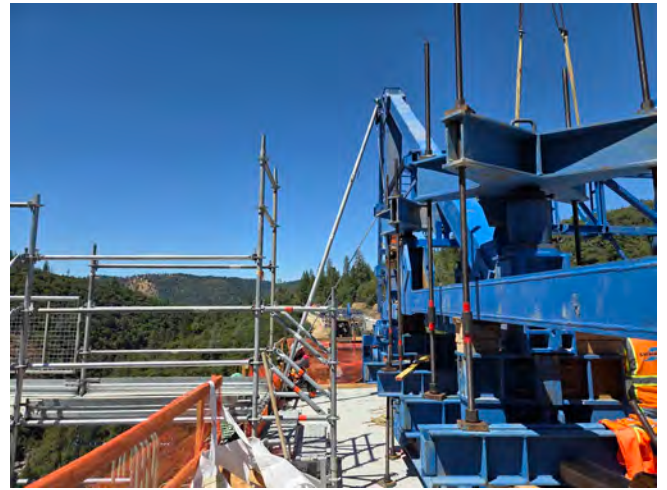
8/11/25 – Pier 3 (P3-1E) Deck Post Tensioning Ducts Installed



8/15/25 – P3-1E Forms Prepared for Concrete Placement



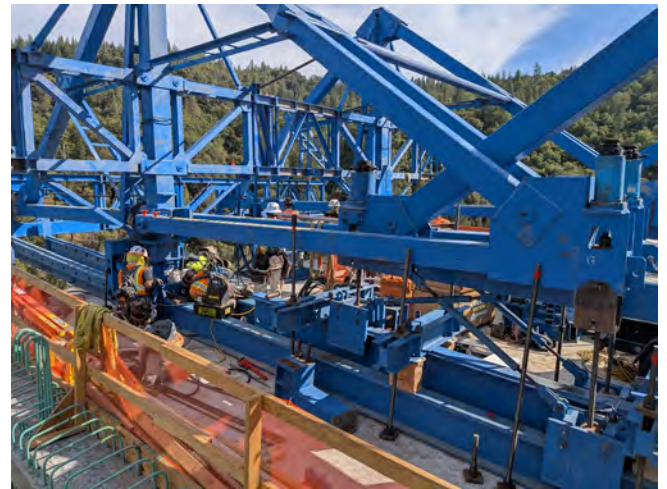
8/16/25 – P3-1E Concrete Placed



8/18/25 – Pier 2 MFT Equipment Installation Progressed



8/18/25 – P3-1E Post Tensioned Tendons



8/21/25 – P3-1E Launch Traveler to P3-2E



8/26/25 – Pier 2 Segment 1 Main Span (P2-1M) Progressed



8/28/25 – P3-1M Rebar & Rough Grading

September 2025

- 1 holiday and 0 non-working days due to weather.
- Continued ongoing work plans / reports generation, review, and approval for segment construction, thermal control, geometry control, and falsework.
- Completed delivery, assembling, and placement of form travelers for Pier 2 end span & main span.
- Completed Pier 2 segment construction P2-1E.

<http://www.eldoradocounty.ca.gov/DOT>

- Began construction of Pier 2 segment P2-1M.
- Completed Pier 3 segments construction P3-1M through P3-2M.
- Began construction of Pier 3 segment P3-3E.
- Mobilized equipment for architectural shotcrete at Pier 2 & 3 foundation and soldier pile walls.
- Continued construction of Abutment 4 end span falsework bents bottom caps & posts.
- Continued site inspections for erosion control compliance.
- Continued maintenance of storm water erosion control measures as needed site wide.
- Continued site wide roadway sweeping as needed.
- Continued deliveries of Project concrete, rebar, and other materials.
- Continued Project batch plant concrete supply to north Pier 3 operations.
- Continued intermittent flagging and traffic control for equipment and materials deliveries.



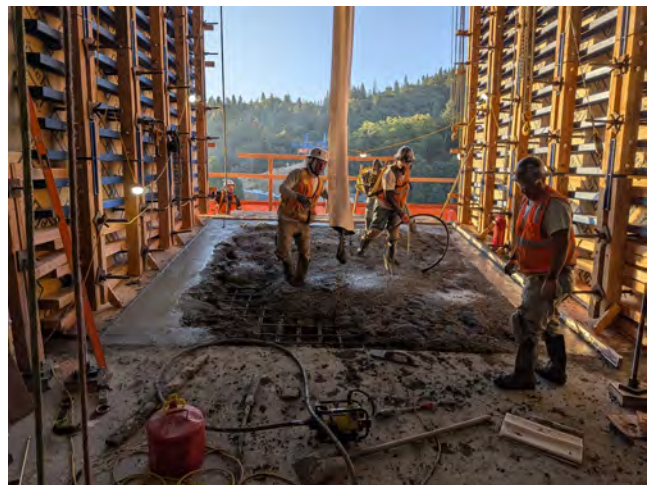
9/02/25 – P3-2E Launched & Ready for Rebar



9/02/25 – P3-1M Post Tension Ducts Installed



9/03/25 – P2-1E & P2-1M MFT Bottom Platforms Installed



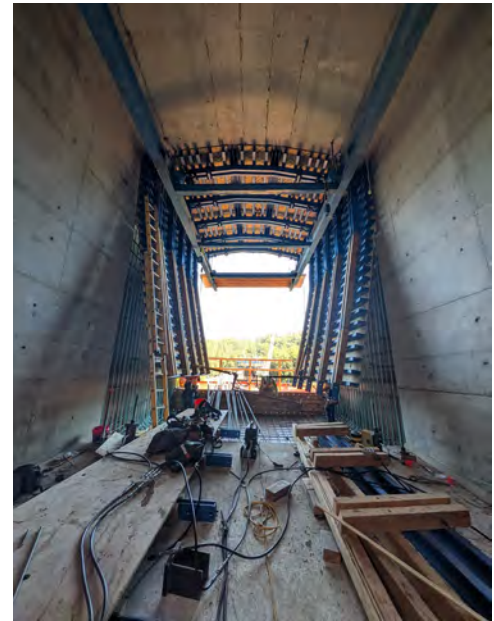
9/05/25 – P3-1M Concrete Placed



9/08/25 – Abut 4 End Span Began Falsework Posts 9/10/25 – P3-1M Launched Traveler to P3-2M



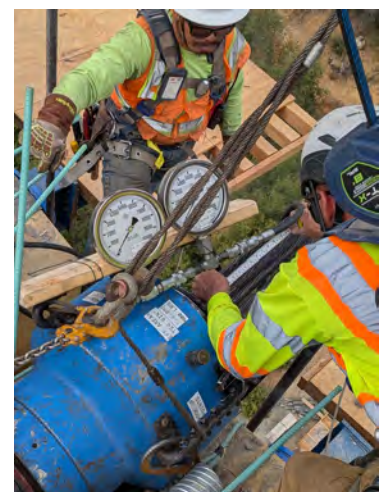
9/12/25 P2-1E Continued MFT Assembly



9/16/25 P3-2M Placed Rebar & Prep. Internal Girder Forms



9/17/25 – P3-2E Deck Concrete Placed



9/18/25 – P3-2E Stressed Tendons



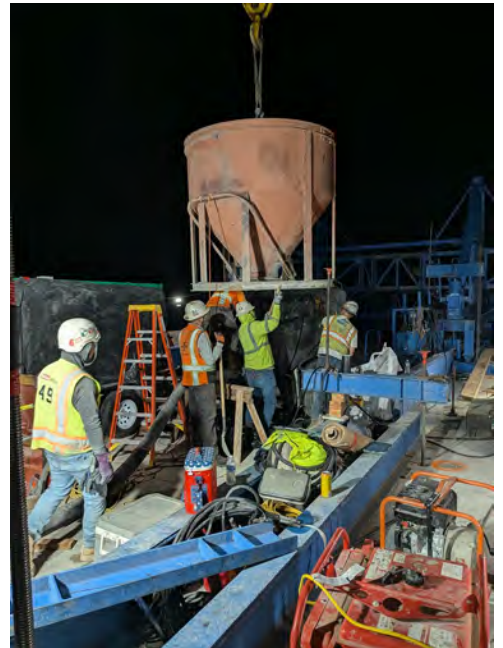
9/18/25 – P3-2E Launched MFT to P3-3E



9/22/25 – P3-2M Prepared for Concrete Placement



9/22/25 – P2-1E Began Rebar Installation



9/23/25 – P3-2M Concrete Placed



9/27/25 – P2-1E Concrete Placed



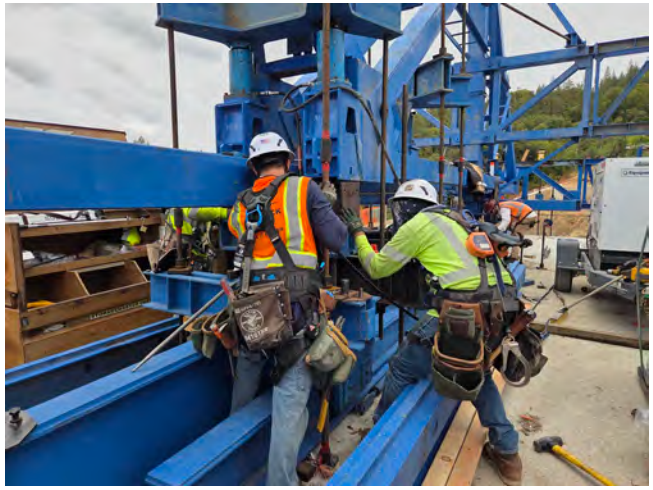
9/30/25 – P3-3E Concrete Placed

October 2025

- 0 holiday and 0 non-working days due to weather.
- Completed ongoing work plans generation, review, and approval for segment construction, geometry control, and falsework.
- Completed Pier 2 segments construction P2-1M through P2-2E.
- Completed Pier 3 segments construction P3-3E through P3-6M.
- Completed architectural shotcrete at Pier 2 & 3 foundation and soldier pile walls.
- Completed construction of Abutment 4 end span falsework bents, stringers, joist, soffit.
- Began construction of Abutment 4 PTFE bearing installation and exterior girder forms.
- Continued site inspections for erosion control compliance.
- Continued maintenance of storm water erosion control measures as needed site wide.
- Continued site wide roadway sweeping as needed.
- Continued deliveries of Project concrete, rebar, and other materials.
- Continued Project batch plant concrete supply to north Pier 3 operations.
- Continued intermittent flagging and traffic control for equipment and materials deliveries.



7/01/25 – Pier 2 Installed Shotcrete Rebar & Scaffolding



7/01/25 – P2-1E Prepared to Launch MFT to P2-2E



10/01/25 – Pier 3 Completed Preparation for Shotcrete



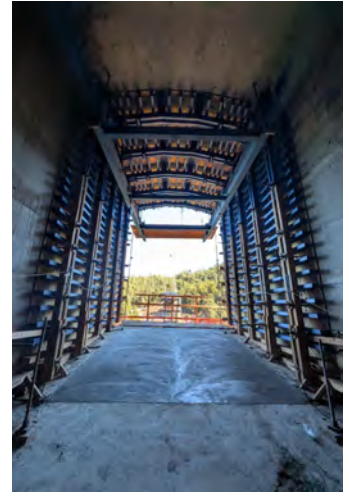
10/01/25 – P3-3E Stressed Tendons



10/03/25 – Pier 3 Began Sculpted Concrete Placement



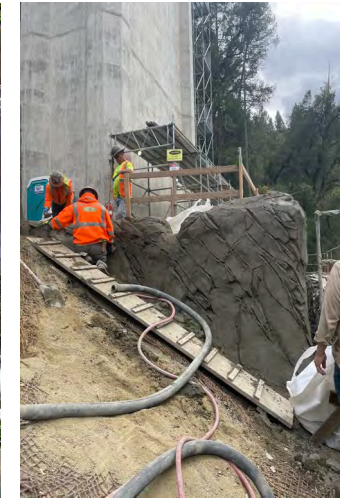
10/06/25 – P3-3M Placed Concrete



10/09/25 – Pier 3 Sculpted Shotcrete Completed



7/10/25 – 7/13/25 – Pier 2 Sculpted Shotcrete Placed



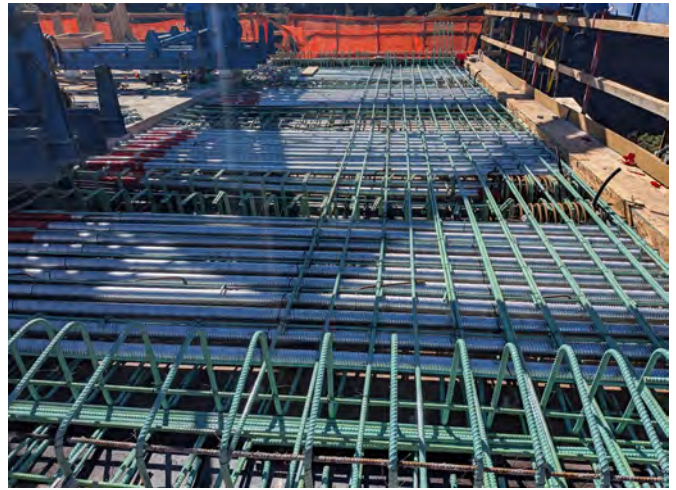
10/15/25 – Abut 4 Continued Falsework Bents



10/15/25 – Abut 4 Placed Falsework Stringers



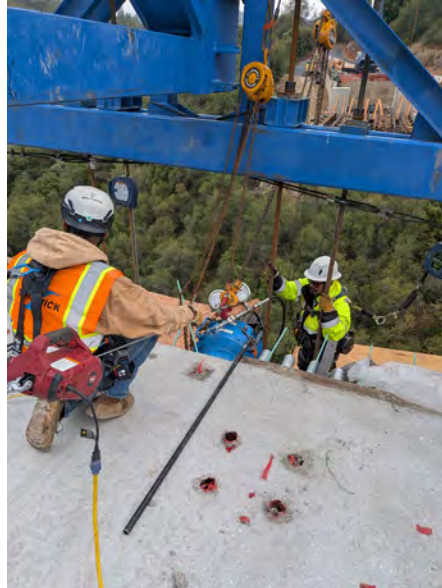
10/20/25 – P2-2E Placed Concrete



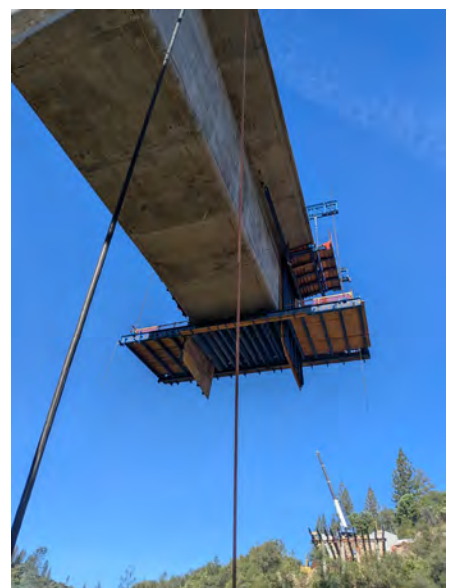
10/20/25 – P3-5E Completed Deck Rebar Placement



10/22/25 – P2-3E Tendons Stressed



10/22/25 – P3-5E Tendons Stressed



10/23/25 – P3-5E MFT Launch to P3-6E



10/24/25 – Completed Joist & Soffit



10/28/25 – P3-5M Concrete Placed



10/30/25 – Exterior Girder Forms Placed

November 2025 – February 2026 Anticipated Work

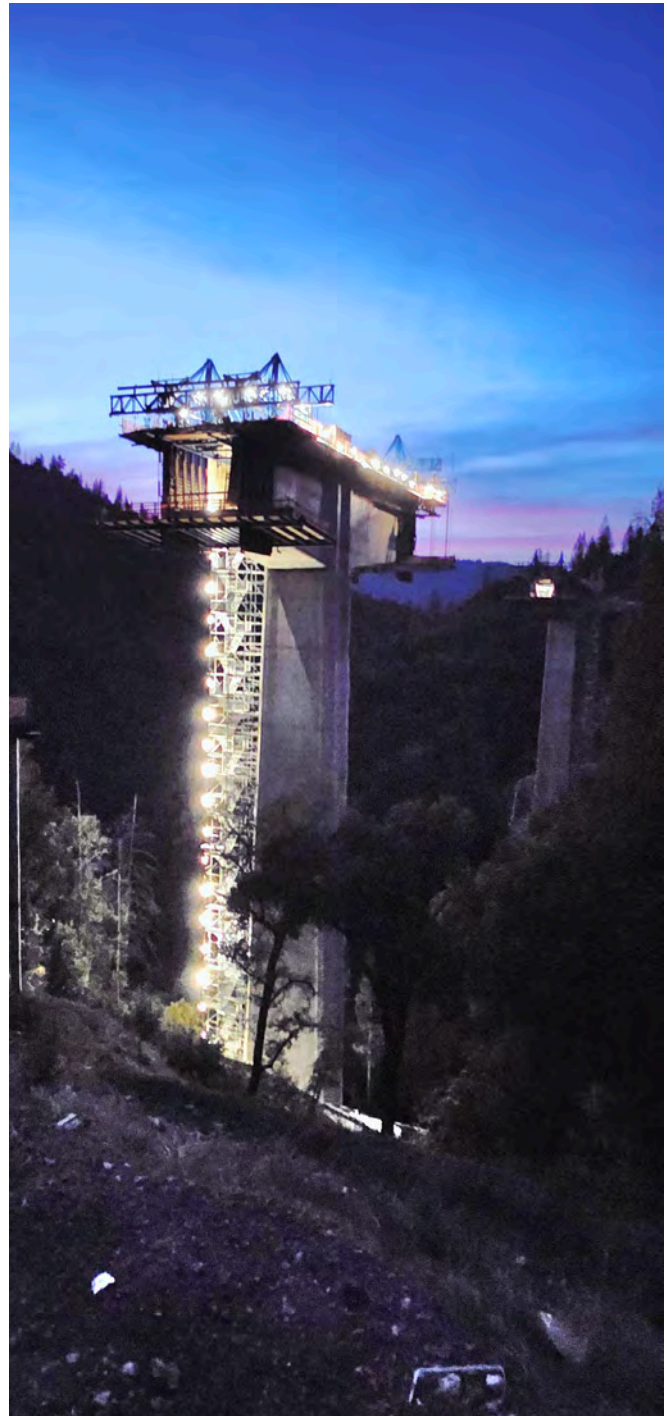
- 700 of 700 (100%) Project working days complete through 9/08/25.
- Current Project Critical Path Schedule shows -189 days of float with an estimated June 2026 completion date.
- 2 holidays and 0 non-working days due to weather during this report work period.
- Complete construction of Pier 2 bridge superstructure segments P2-2M through P2-16E.
- Demobilize 275 Ton crane from Pier 2 trestle and off-haul
- Continue construction of Pier 3 bridge superstructure segments P3-6E through P3-16M.
- Complete Span 3 end span closure concrete placement
- Complete Abutments 1 & 4 end spans (50' each) constructed on falsework.
- Remove end span 3 (Abutment 4) falsework.
- Continue inspection and maintenance of storm water erosion control measures as needed.
- Continue water quality sampling and testing of Project runoff as needed.
- Continue quarterly monitoring of Pier 2 & 3 inclinometers.
- Continue supplying north Project with batch plant concrete for Pier 3 segments construction.
- Continue intermittent flagging and traffic control for equipment and materials deliveries.
- Continue receiving Project equipment and materials.



11/06/25 – Pier 2 & 3 Pier Tables & Modular Form Travelers (MFTs) & Segments Casting Progress Looking West



7/25/25 – Pier 2 & 3 Pier Tables & Travelers Progress



11/10/25 – Segment Casting Progress Through P2-2M & P3-6M



7/23/25 Pier 3 Pier Table & Began Assembly of MFTs

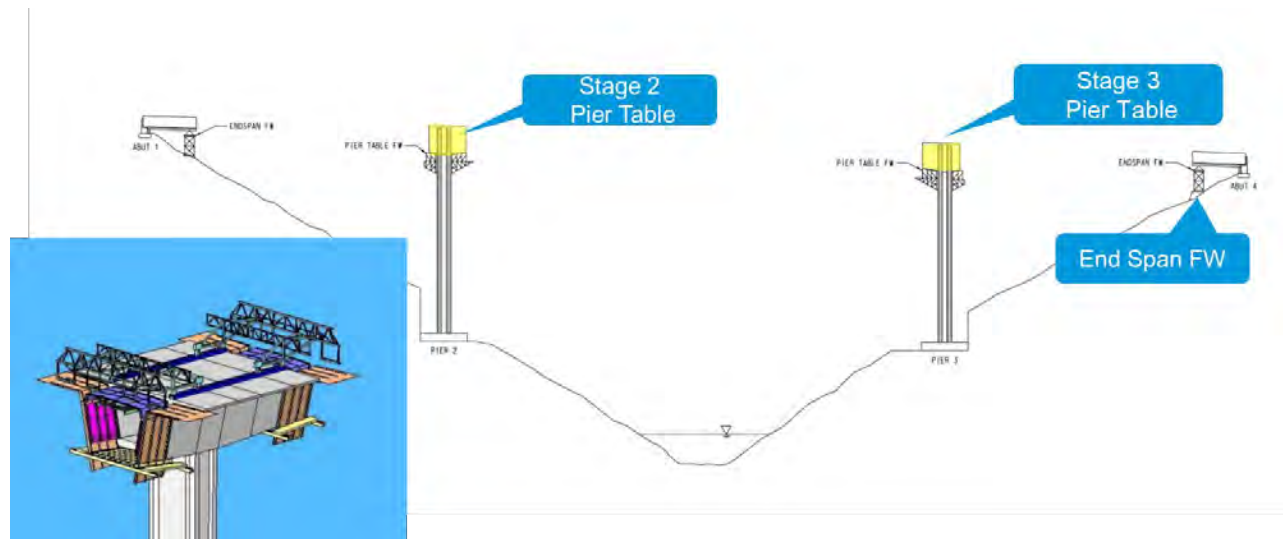


9/22/25 – Pier 3 MFTs Launched to P3-2M & P3-3E

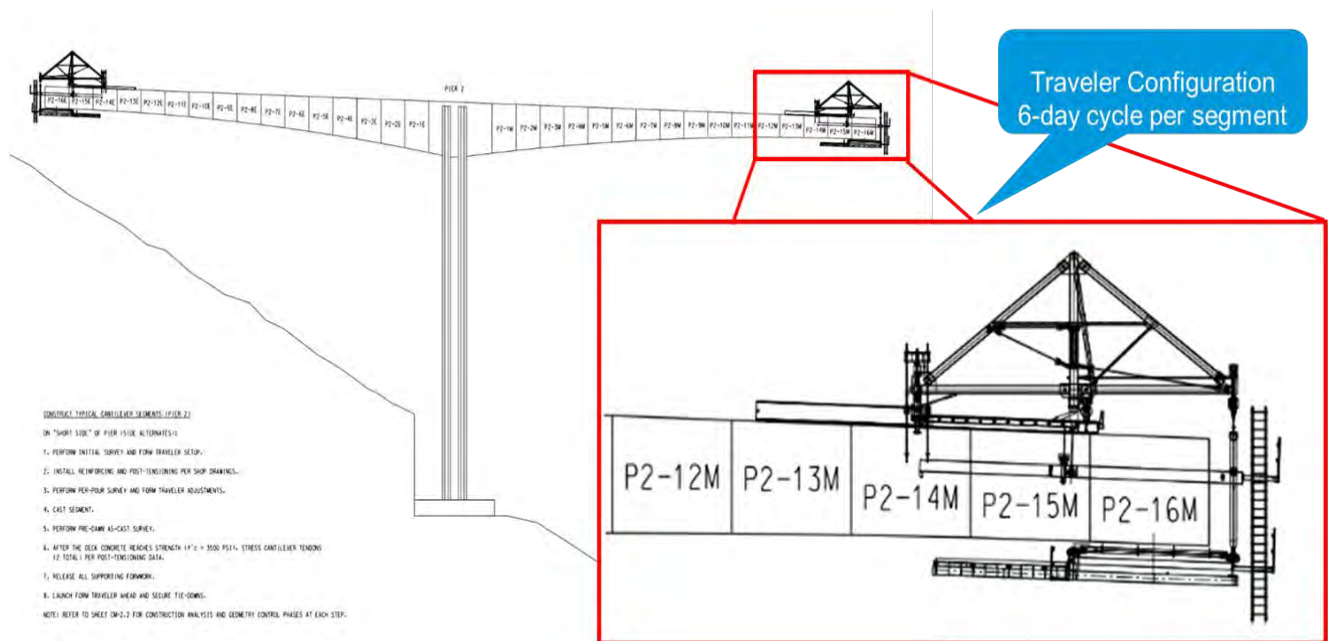


11/12/25 – Pier 2 MFTs Launched to P2-3M & P2-4E / Pier 3 MFTs Launched to P3-7E & P3-7M (Looking Southwest)

<http://www.eldoradocounty.ca.gov/DOT>



2025 Mosquito Bridge Structure Details with Travelers and Initial Segments Constructed (Inlay Detail)



2025 Mosquito Bridge Traveler and Segment Advancement Details