



U.S. DEPARTMENT OF HOUSING AND URBAN DEVELOPMENT
WASHINGTON, DC 20410-1000

This Worksheet was designed to be used by those “Partners” (including Public Housing Authorities, consultants, contractors, and nonprofits) who assist Responsible Entities and HUD in preparing environmental reviews, but legally cannot take full responsibilities for these reviews themselves. Responsible Entities and HUD should use the RE/HUD version of the Worksheet.

Explosive and Flammable Hazards (CEST and EA) – PARTNER

<https://www.hudexchange.info/environmental-review/explosive-and-flammable-facilities>

- 1. Does the proposed HUD-assisted project include a hazardous facility (a facility that mainly stores, handles or processes flammable or combustible chemicals such as bulk fuel storage facilities and refineries)?**

No

→ Continue to Question 2.

Yes

Explain:

[Click here to enter text.](#)

→ Continue to Question 5.

- 2. Does this project include any of the following activities: development, construction, rehabilitation that will increase residential densities, or conversion?**

No → If the RE/HUD agrees with this recommendation, the review is in compliance with this section. Continue to the Worksheet Summary below.

Yes → Continue to Question 3.

- 3. Within 1 mile of the project site, are there any current *or planned* stationary aboveground storage containers:**

- Of more than 100-gallon capacity, containing common liquid industrial fuels OR
- Of any capacity, containing hazardous liquids or gases that are not common liquid industrial fuels?

No → If the RE/HUD agrees with this recommendation, the review is in compliance with this section. Continue to the Worksheet Summary below. Provide all documents used to make your determination.

Yes → Continue to Question 4.

- 4. Is the Separation Distance from the project acceptable based on standards in the Regulation?**

Please visit HUD’s website for information on calculating Acceptable Separation Distance.

Yes

→ If the RE/HUD agrees with this recommendation, the review is in compliance with this section. Continue to the Worksheet Summary below.

Provide map(s) showing the location of the project site relative to any tanks and your separation distance calculations. If the map identifies more than one tank, please identify the tank you have chosen as the “assessed tank.”

No

→ Continue to Question 6.

Provide map(s) showing the location of the project site relative to any tanks and your separation distance calculations. If the map identifies more than one tank, please identify the tank you have chosen as the “assessed tank.”

5. Is the hazardous facility located at an acceptable separation distance from residences and any other facility or area where people may congregate or be present?

Please visit HUD’s website for information on calculating Acceptable Separation Distance.

Yes

→ If the RE/HUD agrees with this recommendation, the review is in compliance with this section. Continue to the Worksheet Summary below.

Provide map(s) showing the location of the project site relative to residences and any other facility or area where people congregate or are present and your separation distance calculations.

No

→ Continue to Question 6.

Provide map(s) showing the location of the project site relative to residences and any other facility or area where people congregate or are present and your separation distance calculations.

6. For the project to be brought into compliance with this section, all adverse impacts must be mitigated. Explain in detail the exact measures that must be implemented to make the Separation Distance acceptable, including the timeline for implementation. If negative effects cannot be mitigated, cancel the project at this location.

Note that only licensed professional engineers should design and implement blast barriers. If a barrier will be used or the project will be modified to compensate for an unacceptable separation distance, provide approval from a licensed professional engineer.

[Click here to enter text.](#)

Worksheet Summary

Provide a full description of your determination and a synopsis of the information that it was based on, such as:

- Map panel numbers and dates
- Names of all consulted parties and relevant consultation dates
- Names of plans or reports and relevant page numbers
- Any additional requirements specific to your program or region

Include all documentation supporting your findings in your submission to HUD.

Based on aerial imagery and the site visit, land uses within 1 mile are residential with supporting commercial uses. No above ground storage tanks (ASTs) were observed within 1 mile of the site.

The California Environmental Protection Agency (CalEPA) Regulated Site Portal was also used to determine if there were any facilities with ASTs within a 1-mile radius of the site. There were no sites found within a 1-mile radius of the project area with ASTs.

In addition, no ASTs were identified in the Phase I Environmental Site Assessment. Please see attached for the CalEPA Regulated Site Portal Map.

Please see Exhibit 2-F for Phase I Report.



U.S. DEPARTMENT OF HOUSING AND URBAN DEVELOPMENT
WASHINGTON, DC 20410-1000

This Worksheet was designed to be used by those “Partners” (including Public Housing Authorities, consultants, contractors, and nonprofits) who assist Responsible Entities and HUD in preparing environmental reviews, but legally cannot take full responsibilities for these reviews themselves. Responsible Entities and HUD should use the RE/HUD version of the Worksheet.

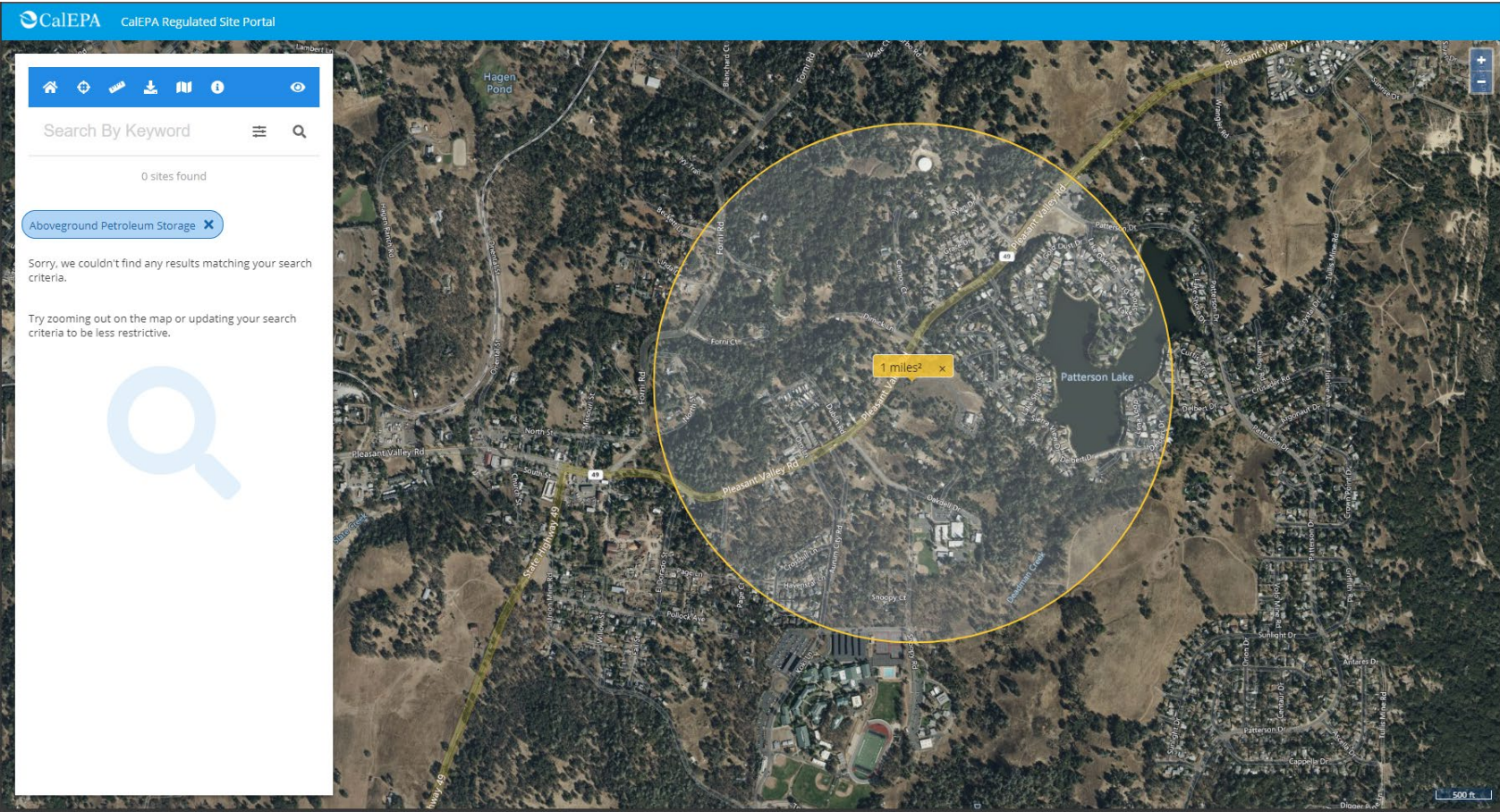


Figure 1 CalEPA Regulate Site Portal AST Map