

This document was compiled from many sources - public and private - the accuracy of which was not verified by the County of El Dorado. The County does not warrant, expressly or implicitly, the accuracy or validity of information contained in this document. Users therefore use this information at their own risk, and are encouraged to verify any information contained or depicted in this document.

Land use data is developed and maintained by the El Dorado County Development Services Department, Planning Division. This map uses a modified version of the parcel base referred to below.

Parcel base and road data developed and maintained by the El Dorado County Surveyor's Office - GIS Division.

The airport safety zones are shown for informational purposes only. For precise airport safety zone boundary locations, see large scale map maintained by the Planning Division.

Exclusive Agricultural is a holding zone until it has been determined that the lot should be zoned Agricultural Grazing or Planned Agriculture based on the uses occurring on site under the Williamson Act Contract.

Agricultural (A) holding zone in Tahoe Basin on those lots not already zoned.

Map currency: March 2012

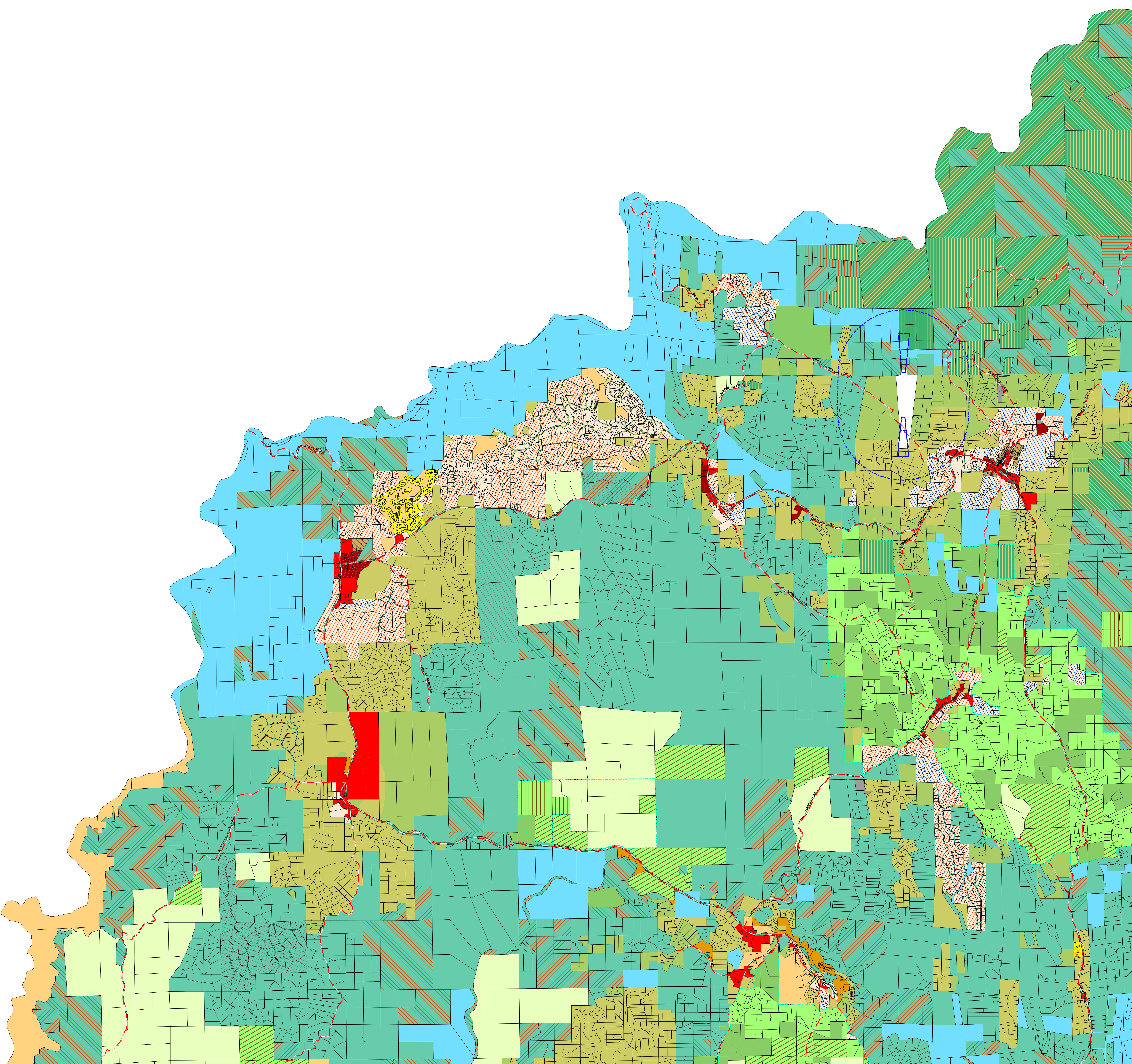
GIS ID: 70301_1

NOTES:

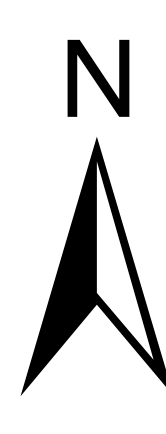
This DRAFT PRD Zoning Map is for the purpose of analysis as part of the Environmental Impact Report for the Targeted General Plan Amendment and Comprehensive Zoning Ordinance Update (SCH#021052074). No decisions have been made. Final recommendation will be made following a full CEQA review at a public notice hearing of the Board of Supervisors.

The zoning represented in this map series is a compilation of Area Plan Zoning Maps and the 1995 Zoning Map.


DRAFT PRD Zoning Map for Purpose of Analysis




Legend	
Agricultural Grazing - 40 Acres	Planned Agriculture - 160 Acres
Agricultural Grazing - 160 Acres	Commercial Community
Limited Agriculture - 20 Acres	Commercial General
Limited Agriculture - 40 Acres	Commercial Limited
Limited Agriculture - 80 Acres	Commercial Professional Office
Planned Agriculture - 10 Acres	Commercial Regional
Planned Agriculture - 20 Acres	Open Space
Planned Agriculture - 30 Acres	Forest Resource - 40 Acres
Planned Agriculture - 40 Acres	Forest Resource - 160 Acres
Planned Agriculture - 80 Acres	Timber Production Zone
Industrial	Residential Limited - 10 Acres
Research & Development	Residential Limited - 20 Acres
Residential Single Unit	Residential Limited - 40 Acres
Residential Multi-Unit	Residential Limited - 80 Acres
Residential 20,000	Residential Limited - 160 Acres
Residential 1 Acre	Recreational Facility
Residential 2 Acres	Recreational Facility - Low
Residential 3 Acres	Recreational Facility - High
Residential Estate - 5 Acres	Carson Creek - Specific Plan
Residential Estate - 10 Acres	Promontory - Specific Plan
Valley View - Specific Plan	Marble Valley - Tentative Map
Meyers Community Plan - 1	Meyers Community Plan - 2
Meyers Community Plan - 2	Meyers Community Plan - 3
Meyers Community Plan - 3	Meyers Community Plan - 4
Meyers Community Plan - 4	Meyers Community Plan - 5
City of Placerville	City of South Lake
Transportation Corridor	Planned Development
Design Review - Community	Manufactured/Mobile Home Park
Agricultural District Boundary	Airport Safety Zone
Ecological Preserve	Tahoe Basin
Parcel Base	Major Roads



Map displayed in State Plane Coordinate System (NAD 1983 California Zone 2, feet)





Map Created By: Frank Bruhn, GIS Analyst II
 Surveyor's Office, El Dorado County
 Date: May 25, 2012
 For: El Dorado County Planning Department
 2850 Fairlane Court
 Placerville, CA 95667
 (530) 821-5355

