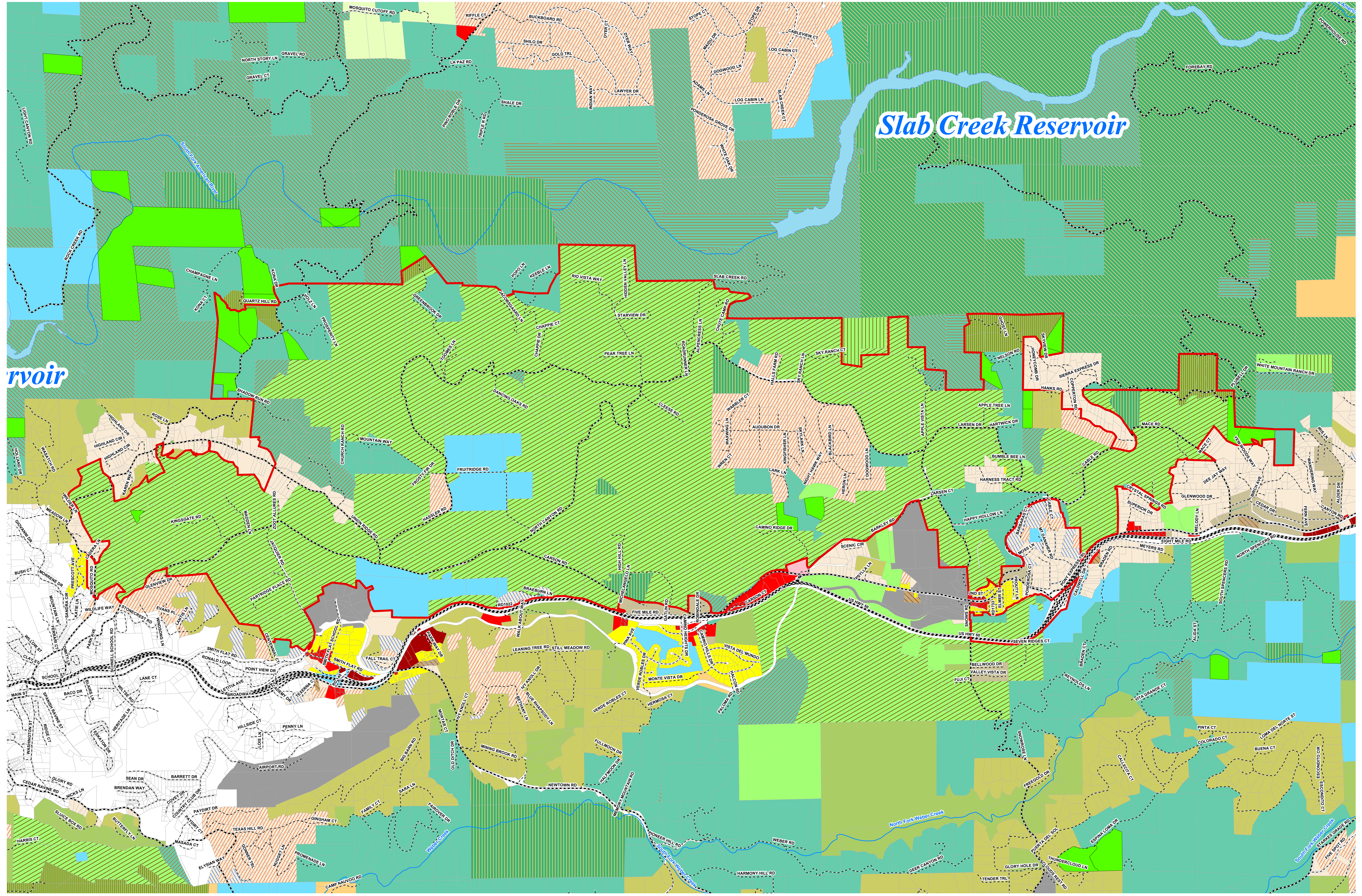


Slab Creek Reservoir



DISCLAIMER:
THIS DEPICTION WAS COMPILED FROM UNVERIFIED PUBLIC AND PRIVATE SOURCES AND IS ILLUSTRATIVE ONLY. NO REPRESENTATION IS MADE AS TO ACCURACY OF THIS INFORMATION. PARCEL BOUNDARIES ARE PARTICULARLY UNRELIABLE. USERS MAKE USE OF THIS DEPICTION AT THEIR OWN RISK.

NOTES:
LAYER INFORMATION MAY COVER ADDITIONAL AREAS OUTSIDE OF THE DISPLAYED AREA.
PREPARED AT THE REQUEST OF: Shanna Purvines, DATE: 03/19/2014
MAP PREPARED BY: Frank Brujini, DATE: 04/02/2014
G.I.S. PROJECT ID: 703371, RELATED REPORT: na
EL DORADO COUNTY SURVEYOR/G.I.S. DIVISION
PHONE: (530) 621-4511 FAX: (530) 628-8731

AG DISTRICT OPT-IN MAP Camino / Fruitridge County of El Dorado State of California

Legend	
	Opt-in Yes
	Agricultural District
	Parcel Base
	Major Roads
	Roads
	Rivers & Creeks
	Agricultural Grazing - 40 Acres
	Agricultural Grazing - 160 Acres
	Limited Agriculture - 10 Acres
	Limited Agriculture - 20 Acres
	Limited Agriculture - 40 Acres
	Limited Agriculture - 80 Acres
	Planned Agriculture - 10 Acres
	Planned Agriculture - 20 Acres
	Planned Agriculture - 40 Acres
	Planned Agriculture - 80 Acres
	Commercial Community
	Commercial General
	Commercial Limited
	Commercial Professional Office
	Commercial Regional
	Open Space
	Forest Resource - 40 Acres
	Forest Resource - 160 Acres
	Timber Production Zone
	Industrial
	Research & Development
	Residential Single Unit
	Residential Multi-Unit
	Residential 20,000
	Residential 1 Acre
	Residential 2 Acres
	Residential 3 Acres
	Residential Estate - 5 Acres
	Residential Estate - 10 Acres
	Rural Land - 10 Acres
	Rural Land - 20 Acres
	Rural Land - 40 Acres
	Rural Land - 80 Acres
	Rural Land - 160 Acres
	Recreational Facility - Low
	Recreational Facility - High
	Carson Creek - Specific Plan
	Promontory - Specific Plan
	Valley View - Specific Plan
	Marble Valley - Tentative Map
	Meyers Community Plan -1
	Meyers Community Plan -2
	Meyers Community Plan -3
	Meyers Community Plan -4
	Meyers Community Plan -5
	City of Placerville
	City of South Lake
	Transportation Corridor