

The logo for WSP, consisting of the letters 'W', 'S', and 'P' in a stylized, red, sans-serif font. The 'W' and 'S' are connected at the top, and the 'P' is positioned to the right of the 'S'.

WSP

A landscape photograph showing a large, calm lake surrounded by forested mountains under a blue sky with white clouds. The water is a deep blue, and the mountains are covered in green trees. The sky is bright blue with scattered white clouds.

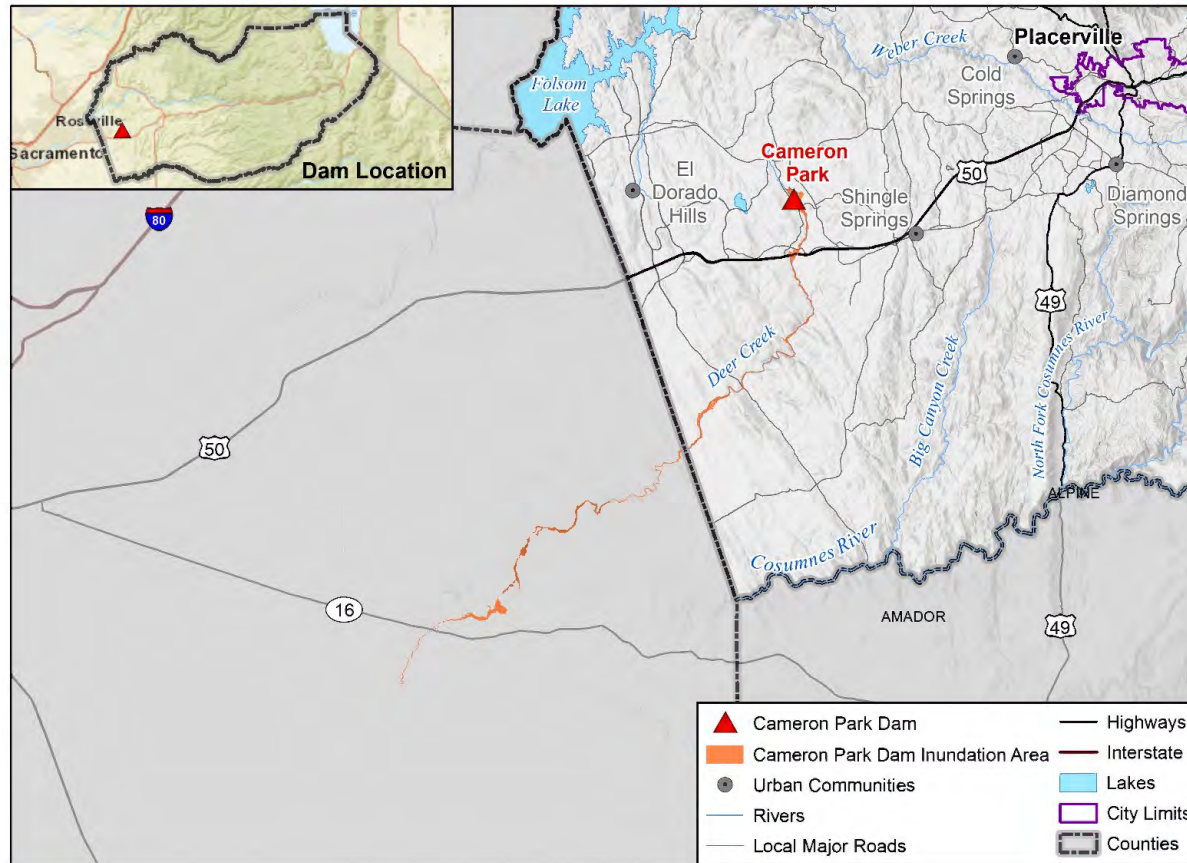
El Dorado County Draft Public Health, Safety, and Noise Element Dam Inundation Maps

November 2023

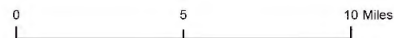
Final Draft – Appendix D

Cameron Park Dam Inundation Area

The Cameron Park Dam is a public utilities dam operated by the Cameron Park Community Services District (CSD). It is a high-hazard, earth type dam on Deer Creek used for water supply and irrigation. It can hold 97,800 cubic yards of water.

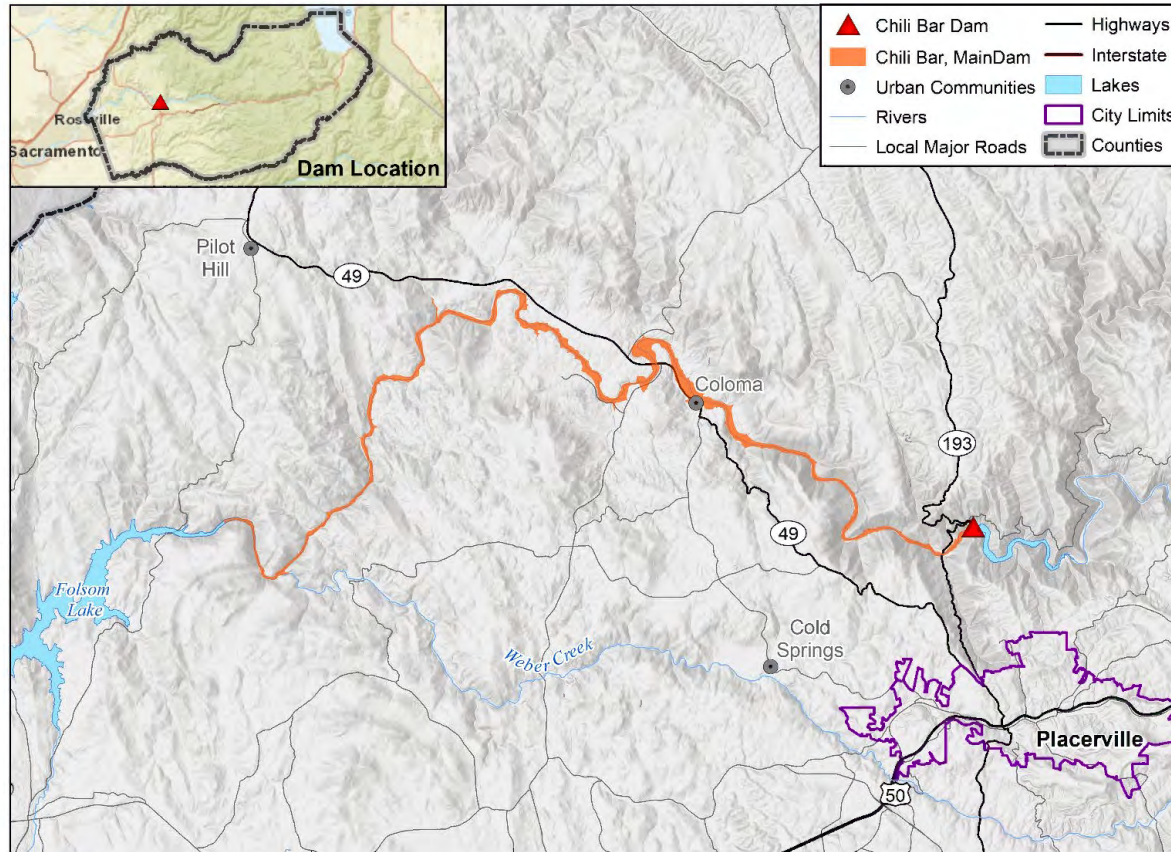


Map compiled 6/2023;
 Intended for planning purposes only.
 Data Source: El Dorado County,
 Department of Water Resources,
 Division of Safety of Dams (DSOD)



Chili Bar Dam Inundation Area

The Chili Bar Dam is a private dam operated by Pacific Gas and Electric (PG&E) Company. It is a concrete, hydroelectric dam on the South Fork of the American River that can hold 54,000 cubic yards of water.



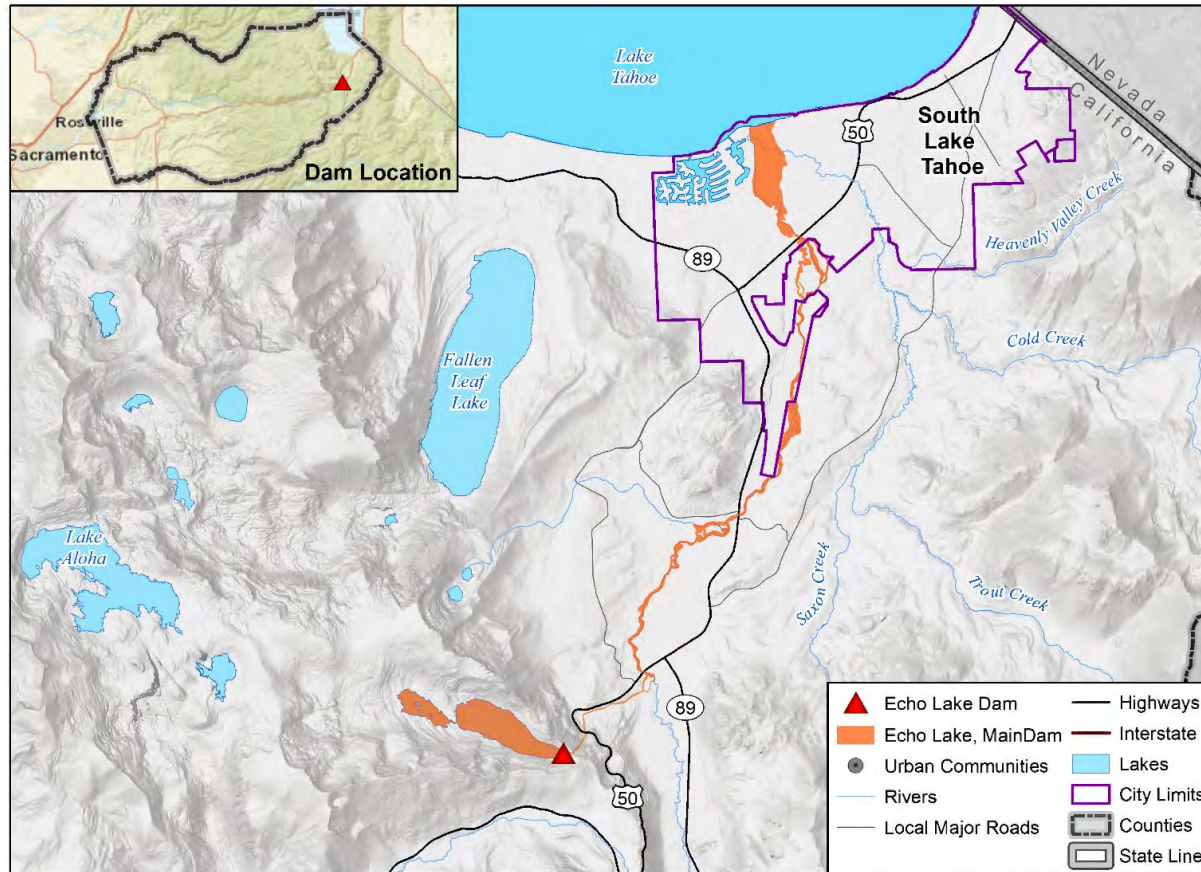
Map compiled 6/2023;
Intended for planning purposes only.
Data Source: El Dorado County,
Department of Water Resources,
Division of Safety of Dams (DSOD)

0 2.5 5 Miles

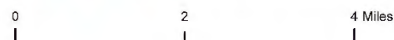


Echo Lake Dam Inundation Area

The Echo Lake Dam is a private dam operated by the El Dorado Irrigation District (EID). It is a roller-compacted concrete dam on Echo Creek used for hydroelectricity, recreation, and debris control.

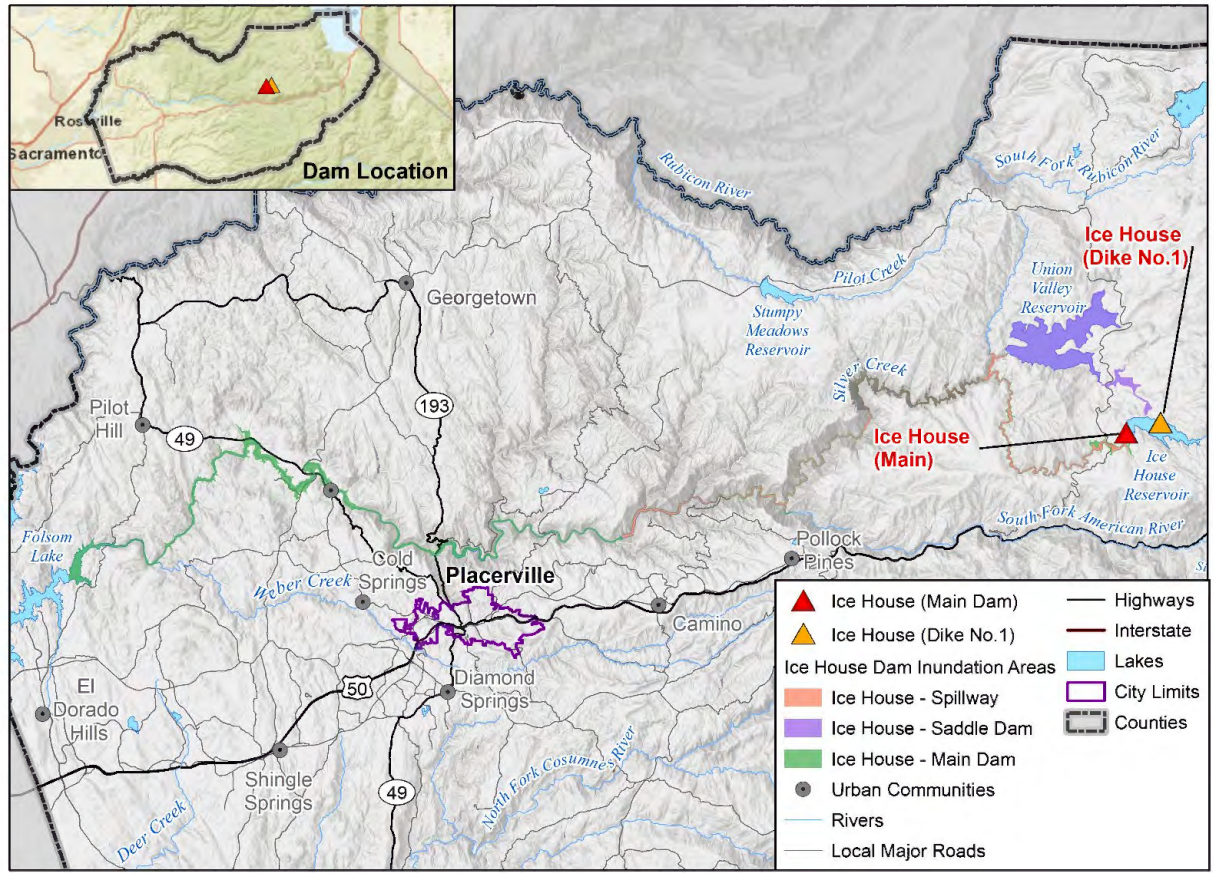


Map compiled 6/2023;
 Intended for planning purposes only.
 Data Source: El Dorado County,
 Department of Water Resources,
 Division of Safety of Dams (DSOD)



Ice House Dam Inundation Area

The Ice House dam is a public utility dam operated by Sacramento Municipal Utility District (SMUD). It is a rockfill and earth type dam on the South Fork of Silver Creek, used for hydroelectricity and recreation. It can hold 610,000 cubic yards of water.



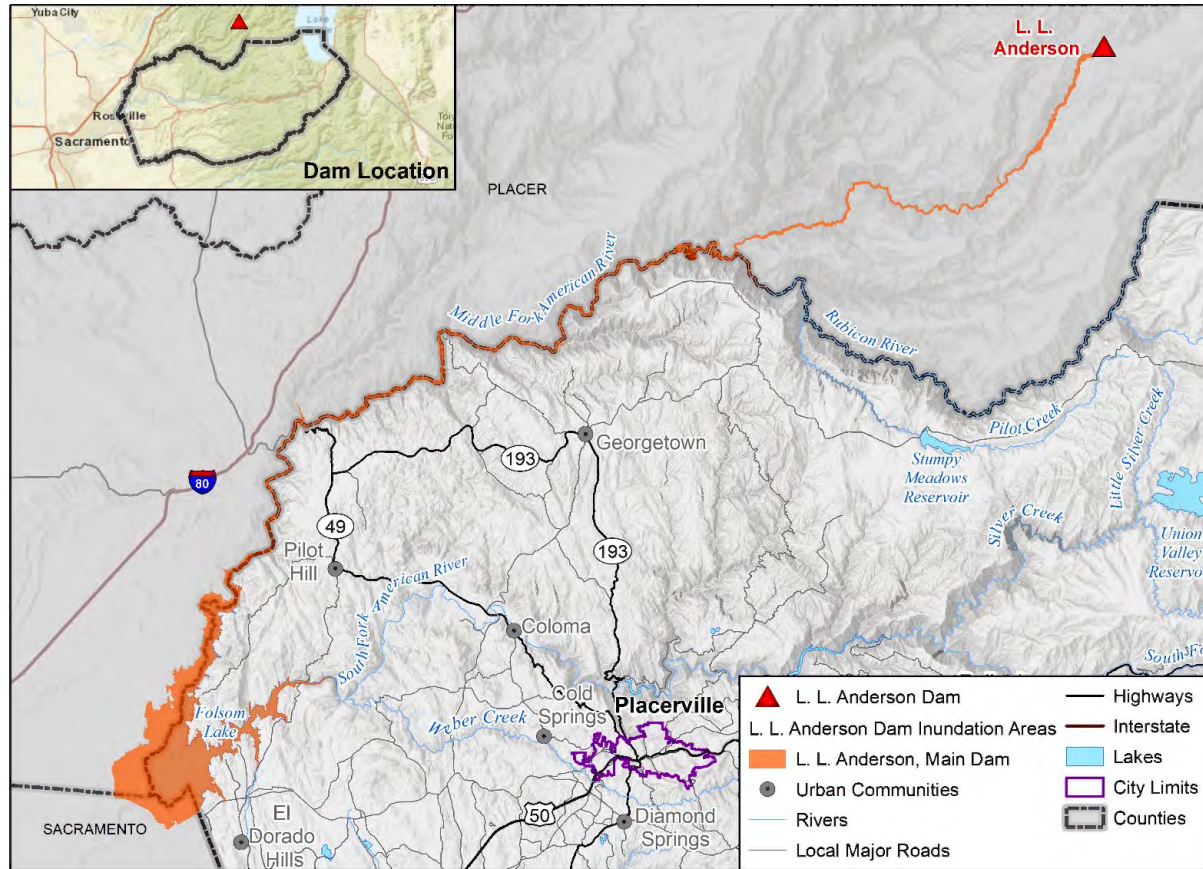
Map compiled 6/2023;
 Intended for planning purposes only.
 Data Source: El Dorado County,
 Department of Water Resources,
 Division of Safety of Dams (DSOD)

0 5 10 Miles



LL Anderson Dam Inundation Area

The LL Anderson Dam, operated by the Placer County Water Authority, is an earth and rock type dam on the Middle Fork of the American River in Placer County. It can hold 179,616,972 cubic yards of water and is used for hydroelectricity and recreation.



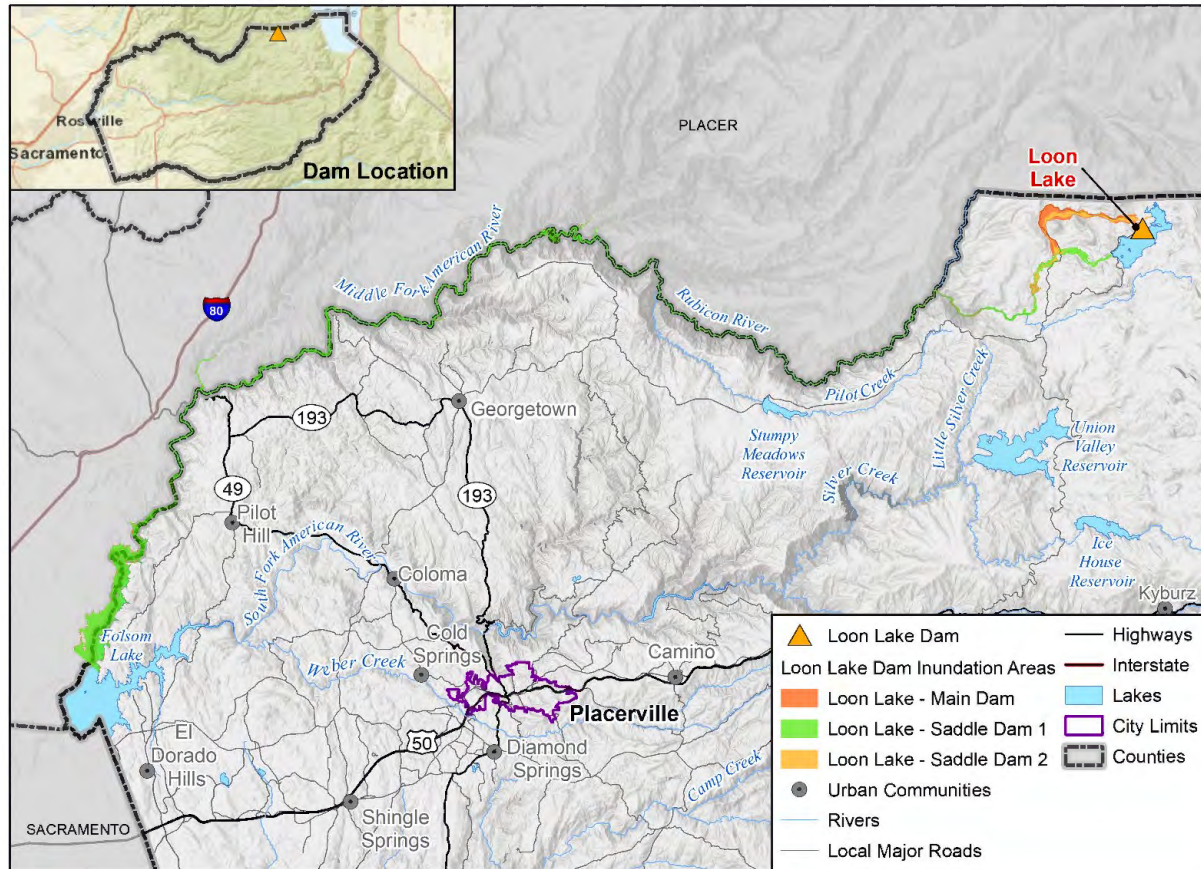
Map compiled 6/2023;
 Intended for planning purposes only.
 Data Source: El Dorado County,
 Department of Water Resources,
 Division of Safety of Dams (DSOD)

0 5 10 Miles



Loon Lake Dam Inundation Area

The Loon Lake Dam is a public utility dam operated by SMUD. It is a rockfill dam on Gerle Creek used for hydroelectricity and recreation. It can hold 800,000 cubic yards of water.



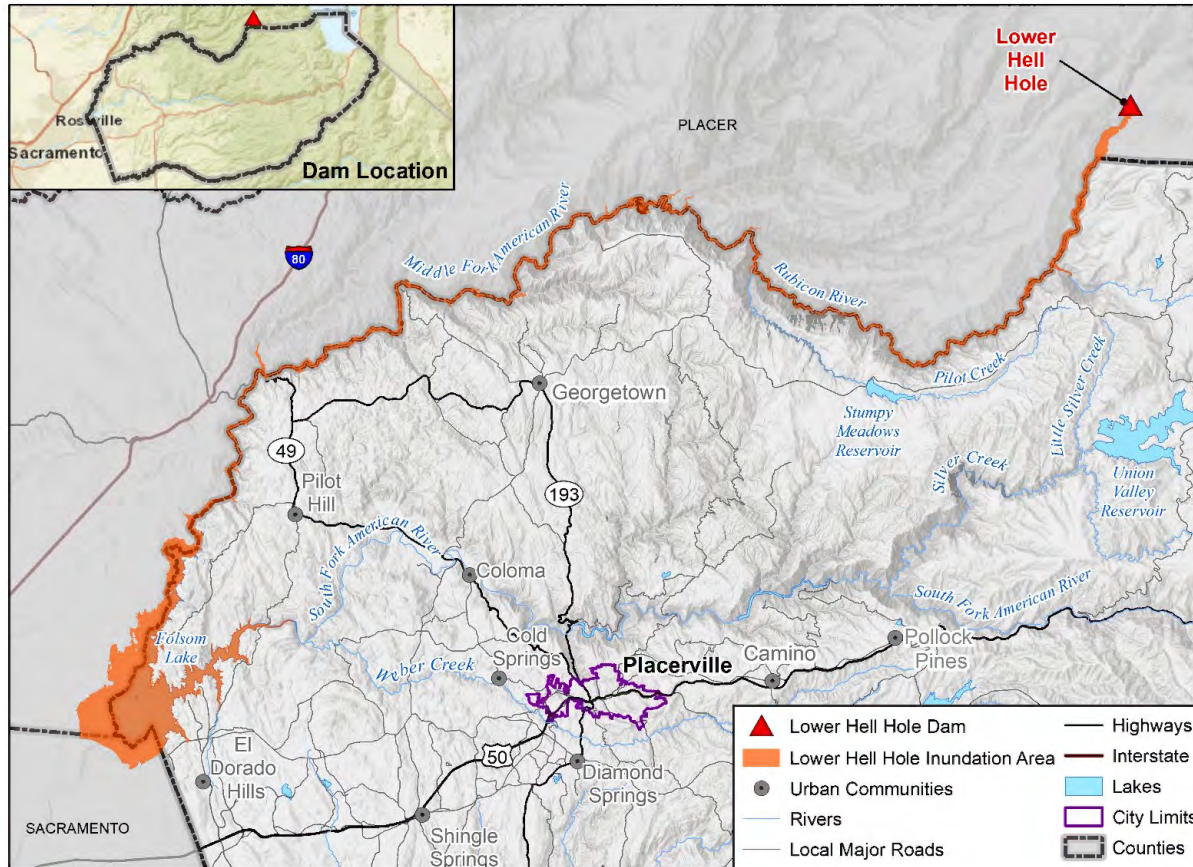
Map compiled 6/2023;
 Intended for planning purposes only.
 Data Source: El Dorado County,
 Department of Water Resources,
 Division of Safety of Dams (DSOD)

0 5 10 Miles

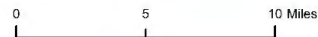


Lower Hell Hole Dam Inundation Area

The Lower Hell Hole Dam, operated by the Placer County Water Authority, is a rock-fill dam on the Rubicon River in Placer County. It can hold 336,218,166 cubic yards of water and is used primary for water supply, hydroelectricity, and recreation.

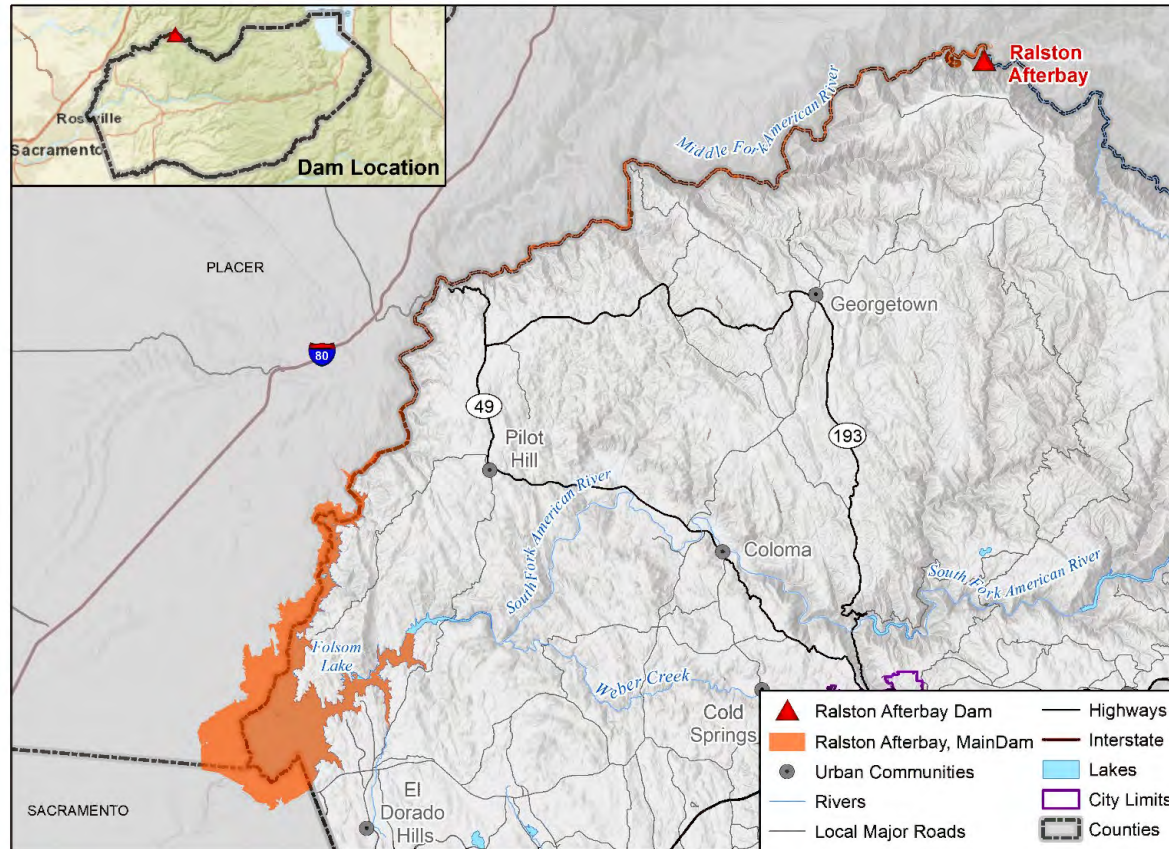


Map compiled 6/2023;
 Intended for planning purposes only.
 Data Source: El Dorado County,
 Department of Water Resources,
 Division of Safety of Dams (DSOD)



Ralston Afterbay Dam Inundation Area

The Ralston Afterbay Dam is a high-hazard dam operated by Placer County Water Agency on the Rubicon River in Placer County. It is a concrete dam used for irrigation, recreation, hydroelectricity, and water supply, and can hold 4,485,060 cubic yards of water.



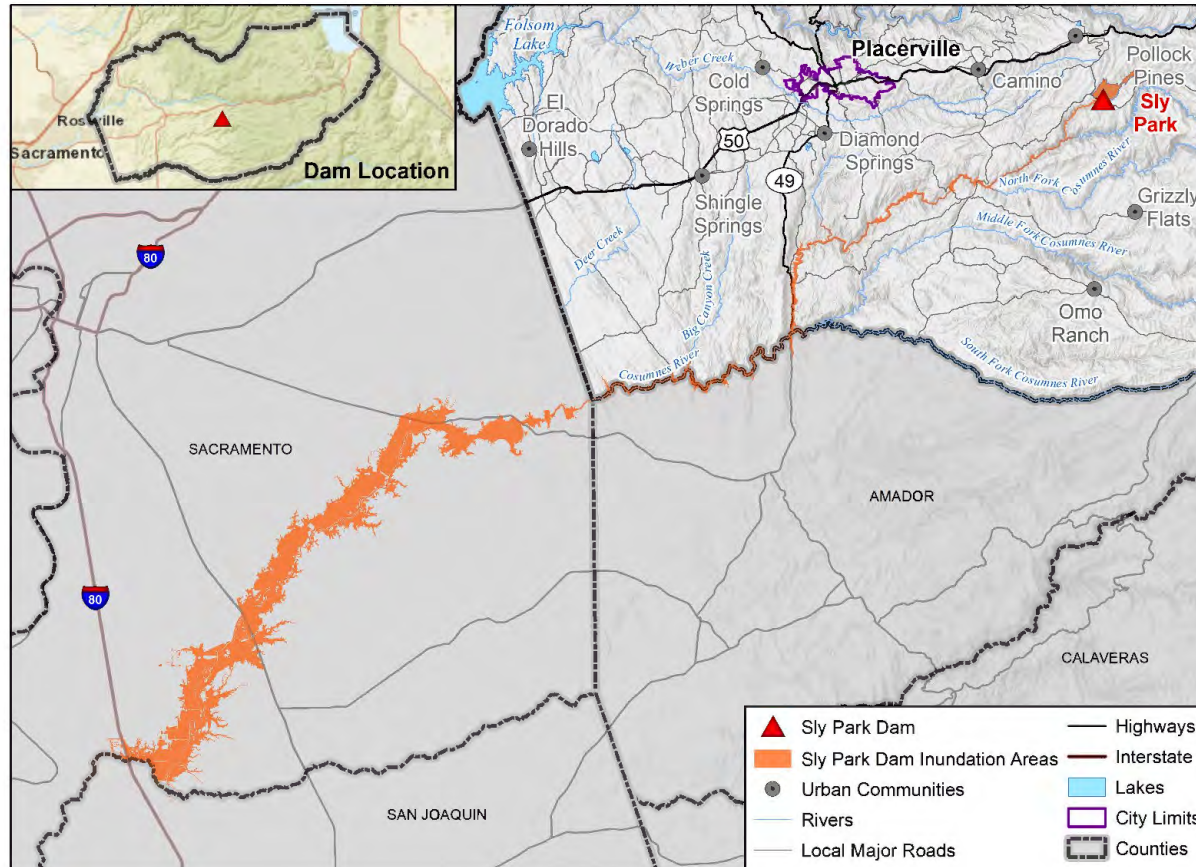
Map compiled 6/2023;
Intended for planning purposes only.
Data Source: El Dorado County,
Department of Water Resources,
Division of Safety of Dams (DSOD)

0 5 10 Miles

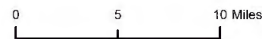


Sly Park Dam Inundation Area

The Sly Park Dam is a public utility dam operated by EID. It is an earth-type dam on Sly Park Creek, used for water supply, irrigation, and recreation. It can hold 41,000 cubic yards of water.

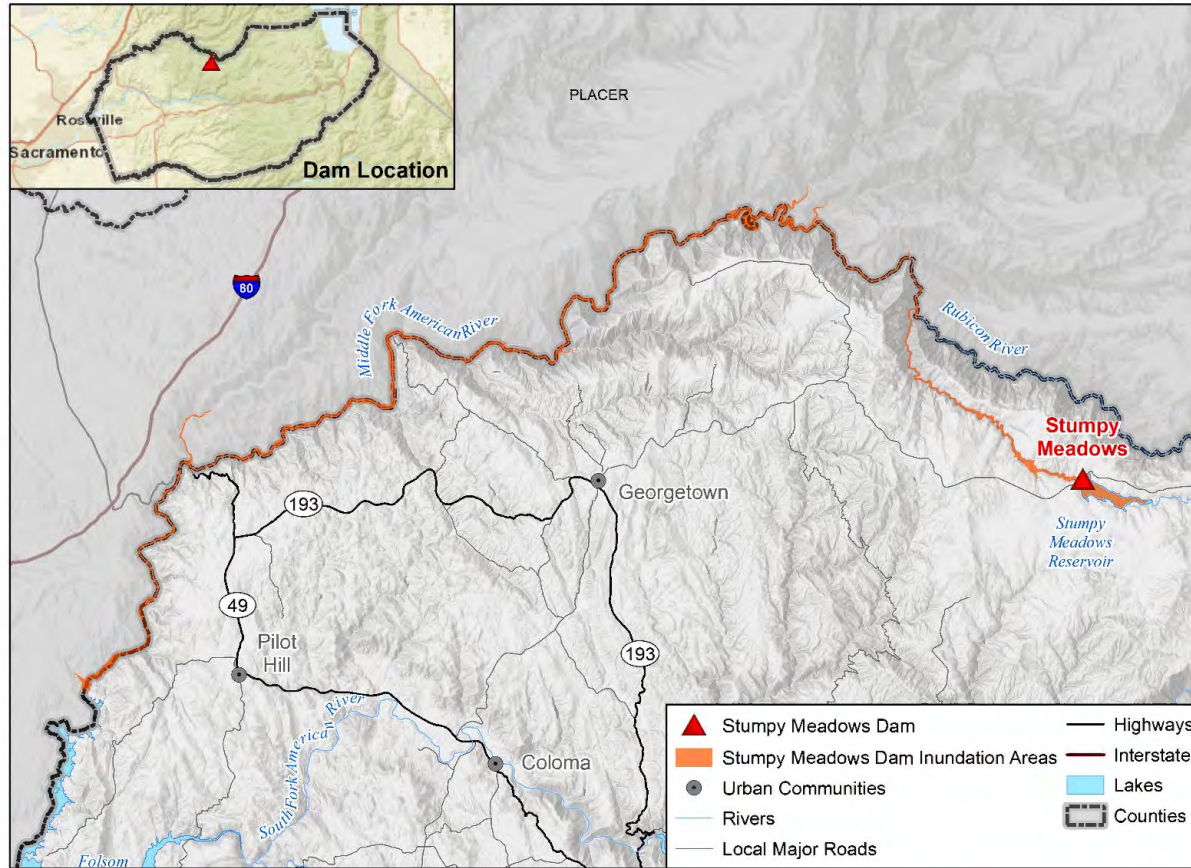


Map compiled 6/2023;
 Intended for planning purposes only.
 Data Source: El Dorado County,
 Department of Water Resources,
 Division of Safety of Dams (DSOD)

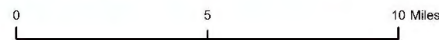


Stumpy Meadows Dam Inundation Area

The Stumpy Meadows Dam, also called the Mark Edson Dam, is a public utility dam operated by the Georgetown Divide Public Utility District. It is an earth-type dam on Pilot Creek, used for water supply, tailings, irrigation, and recreation. It can hold 897,000 cubic yards of water.

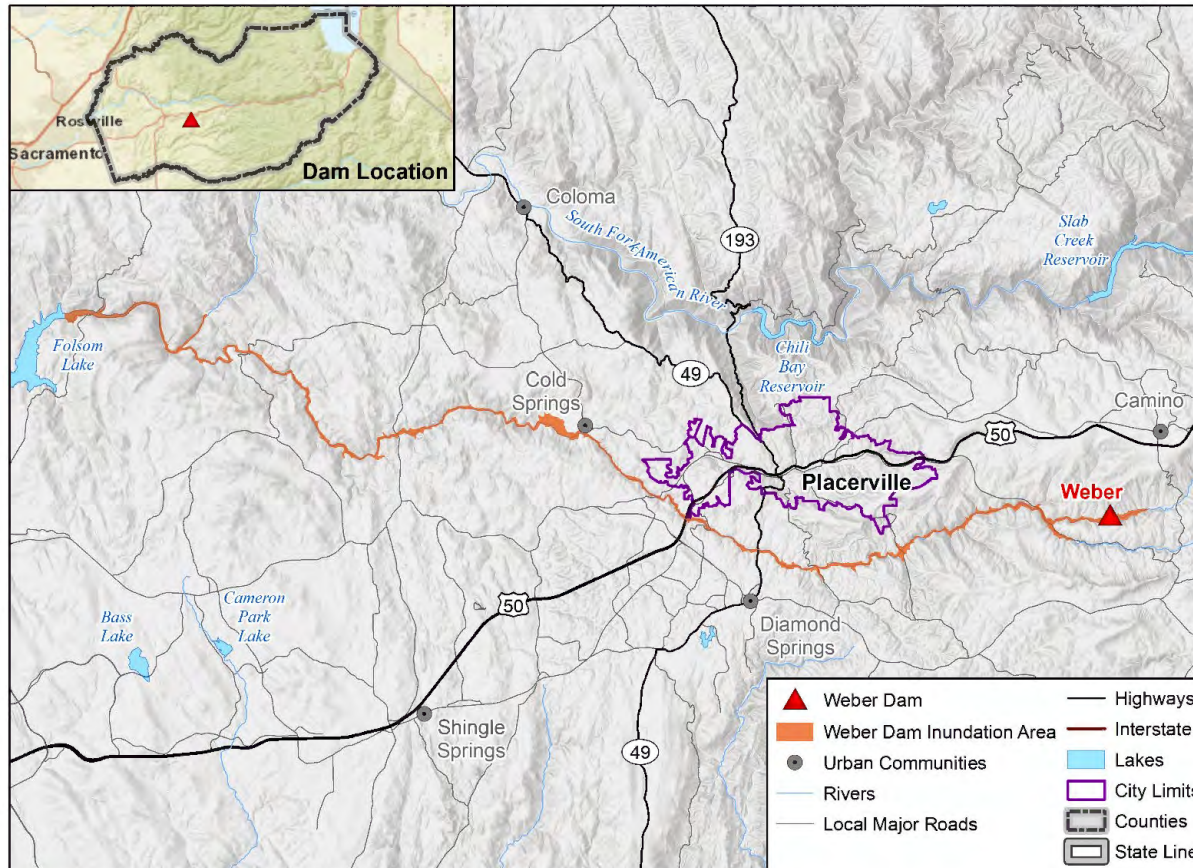


Map compiled 6/2023;
Intended for planning purposes only.
Data Source: El Dorado County,
Department of Water Resources,
Division of Safety of Dams (DSOD)



Weber Dam Inundation Area

The Weber Dam is a public utility dam operated by EID. It is a multi-arch dam on the North Fork of Weber Creek, used for water supply and irrigation. It can hold 5,600 cubic yards of water.



Map compiled 6/2023;
 Intended for planning purposes only.
 Data Source: El Dorado County,
 Department of Water Resources,
 Division of Safety of Dams (DSOD)

