

AGENDA

TRI-COUNTY TECHNICAL ADVISORY COMMITTEE

Friday, August 12, 2022

10:00 A.M.

Join Zoom Meeting:

<https://us02web.zoom.us/j/5375128983>

Dial by phone: 669 900 6833

Meeting ID: 537 512 8983

For further information on any of the agenda items please contact the Amador County Planning Department at (209) 223-6380 or email planning@amadorgov.org. Off-agenda items must be approved by the Tri-County Technical Advisory Committee pursuant to Section 54956.5 of the Government Code.

- A. Call to Order
- B. Approve Agenda
- C. Correspondence
- D. Minutes: April 8, 2022
- E. Public Matters: Informational items and persons wishing to address the Committee regarding non-agenda items
- F. Agenda Items:

ITEM 1: Discussion and possible action regarding a request to remove 37 dead, dying, diseased, or hazard trees submitted by Pyramid Peak Properties for multiple sites the Kirkwood valley.

ITEM 2: Discussion and possible action regarding a request to remove 19 dead, dying, diseased, or hazard trees submitted by KMPUD for multiple facilities.

ITEM 3: Discussion and possible action regarding a proposal to create 65 parking spaces along the southern half of Loop Road submitted by Kirkwood Mountain Resort.

G. Adjournment until the next regularly scheduled meeting September 9, 2022.

SUMMARY MINUTES
TRI-COUNTY TECHNICAL ADVISORY COMMITTEE
Friday, April 8, 2022
10:00 A.M.
VIRTUAL MEETING

Meeting link: <https://us02web.zoom.us/j/5375128983>

Call in phone number: +1 669 900 6833; **Meeting ID:** 537 512 8983

A. Call to Order:

The meeting was called to order by Chuck Beatty at 10:00 am. Members present were:

Brenden Ferry, El Dorado County; Larry Shoemaker and Candace Stowell, Alpine County; and Chuck Beatty, Amador County.

B. Approval of Agenda:

On a motion by Larry Shoemaker and second by Chuck Beatty the agenda was approved as published.

C. Correspondence: Any correspondence received prior to publication of the agenda has been included with the packet. No other correspondence was received.

D. Minutes: March 11, 2022

On a motion by Chuck Beatty and a second by Brendan Ferry, the minutes from the March were approved.

E. Public Matters not on the Agenda: Dolan Beckel requested that Tri-TAC include a discussion of community and stakeholder concerns regarding development of Unit 6 of the Palisades Subdivision.

F. Agenda Items:

ITEM 1: Discussion and possible recommendations regarding the Carson Transportation Management Systems Project on State Routes 88, 89 and 4 in Amador, El Dorado and Alpine Counties.

Chuck Beatty introduced the item and noted that several of the proposed overhead sign locations were within Tri-TAC's jurisdiction along SR88 and SR89 between Dew Drop and Luther's Pass.

General discussion among the Committee and members of the public concerned the following issues:

- The purpose of the signs
- How power would be supplied to the signs
- The criteria for location of control boxes, metal guard rails, lighting, and signs in general
- The appearance and finish of all infrastructure

- The brightness of the overhead displays
- The purpose and reason for the sign at the SR88/Kirkwood Meadows Drive (location 5) versus the other locations
- Will the proposed work be covered by the current Negative Declaration
- Potential impacts on biological resources, particularly potential habitat for the Yellow-Legged Frog
- Needed approval for work outside Caltrans' right-of-way along Kirkwood Meadows Drive for connection to KMPUD's electrical service
- Electrical service to Location 5 may not be covered by the NEPA/CEQA documentation for the Out-Valley Project

It was decided that these issues be transmitted to Caltrans as comments on the proposed project.

G. Adjournment: The meeting was adjourned at 11:15. The next regularly scheduled meeting is May 14, 2022, at 10:00 am.

ITEM 1



Bryce Wehan
Pyramid Peak Properties
1200 Kirkwood Meadows Dr.
Kirkwood, CA. 95646

June 1, 2022

RE: Kirkwood 2022 Hazard Tree Assessment

Mr. Wehan,

The results of the Kirkwood 2022 Hazard Tree Assessment are contained herein. The location of each tree has been identified on the attached maps, with an itemization of each tree provided. The current year's inventory emphasized trees that posed a risk of potential failure within the next approximately 2 years due to physical structure defect, insect, disease, and/or mechanical damage.

Should you have any questions regarding the information contained in this report, please contact me at (530)927-7095.

Best Regards,

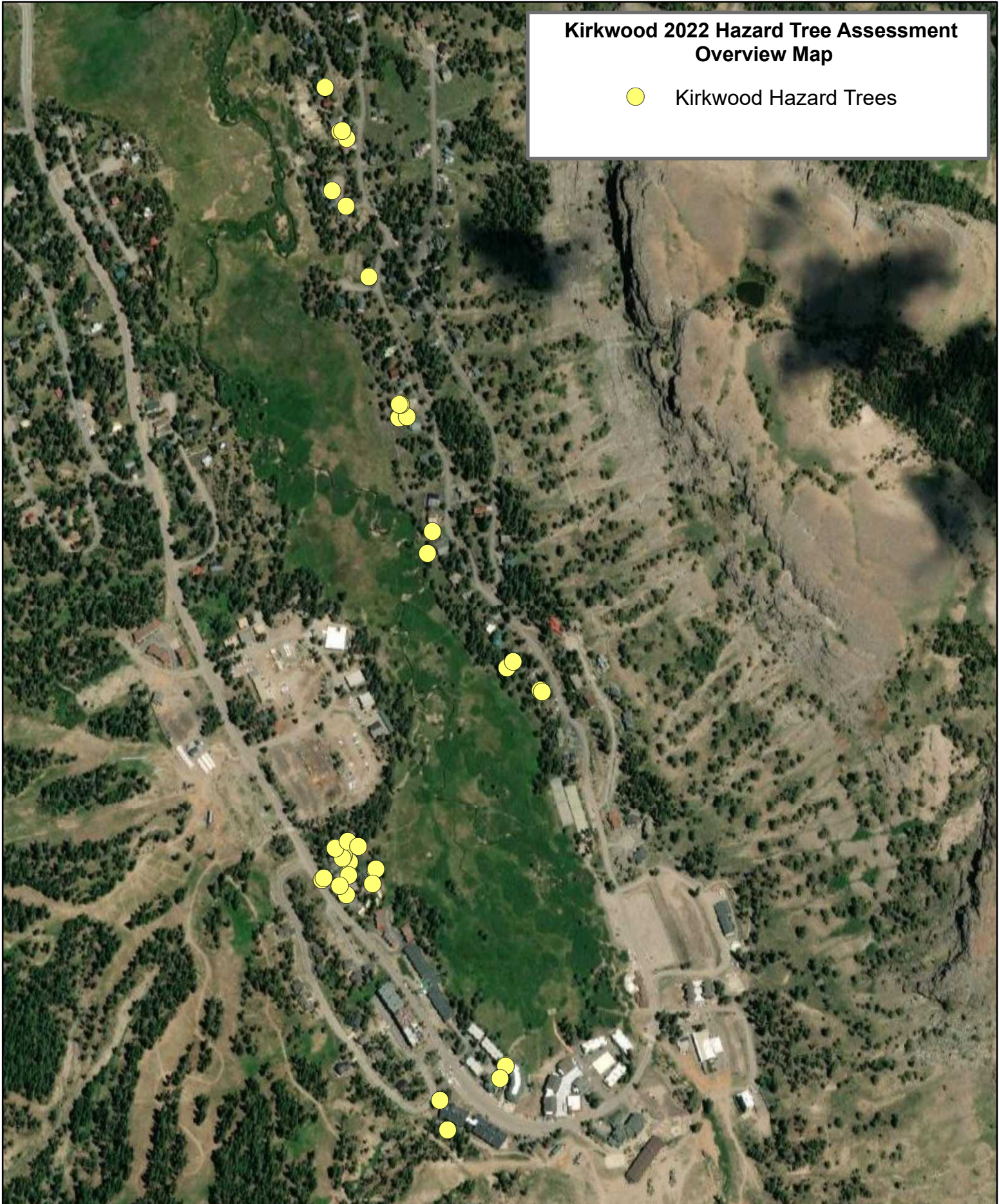
Danielle E. Bradfield
CA Registered Professional Forester #2808
Feather River Forestry LLC



Kirkwood 2022 Hazard Tree Assessment				
Tree#	Species	DBH	Condition	Mitigation
301	White/Red Fir	26	Unsound catface	Remove Tree
300	White/Red Fir	26	Dying - disease/other,Lean/Unnatural Lean	Remove Tree
200	Lodgepole Pine	16	Dead - insect	Remove Tree
201	Lodgepole Pine	14	Live	Girdled,Remove Tree
26	Lodgepole Pine	22	Live	Remove Tree,Unsound union holding water
25	Lodgepole Pine	18	Dead - insect	Remove Tree
23	Lodgepole Pine	26	Dead - insect	Remove Tree
24	Lodgepole Pine	14	Codominant stem,Dying - insect	Remove Tree
22	Lodgepole Pine	14	Live	Mistletoe canker ,Remove Tree
21	Lodgepole Pine	18	Live	2 mistletoe cankers on Bole near roof line ,Remove Tree
20	Lodgepole Pine	42	Dying - disease/other	Remove Tree
103	Lodgepole Pine	16	Live	Mistletoe canker ,Remove Tree
102	Lodgepole Pine	16	Live	Remove Tree,Top blew out
101	White/Red Fir	16	Live	Remove Tree, Too close to wood deck
100	White/Red Fir	14	Live	Remove Tree, Too close to wood deck, overhanging deck even if pruned
19	Lodgepole Pine	18	Bole Crack	Bole has significant mistletoe ,Remove Tree
18	Lodgepole Pine	24	Dying - insect	Remove Tree
17	Lodgepole Pine	18	Dying - disease/other,Dying - insect	Remove Tree
16	Lodgepole Pine	30	Dying - disease/other,Dying - insect	Remove Tree
15	Lodgepole Pine	24	Dead - insect	Dead snag hollow ,Remove Tree
14	Lodgepole Pine	26	Dying - insect	Remove Tree,Rotten base possibly PUD
13	Lodgepole Pine	18	Live	Remove Tree,Within 2 ft of building cannot mitigate fir Fire risk
12	Lodgepole Pine	14	Dying - disease/other	Mistletoe ,Remove Tree
11	White/Red Fir	14	Live	Mistletoe or cytsopla branches are ladder fuel ,Remove Tree
10	White/Red Fir	14	Live	Outcompeted ,Remove Tree
9b	Lodgepole Pine	18	Unsound catface	Remove Tree,Significant ant infestation from ground level to approx 4 ft
9a	Lodgepole Pine	16	Live	Remove Tree,Thin clump allow for fir to grow
6 from prior year	Lodgepole Pine	16	Codominant stem,Live	One tree marked prior year, adj tree has Codom stem lan will put in rod take both or leave both
8b	Lodgepole Pine	16	Live	Broken top lean to Bldng branches to building, borax stumps in this clump,Remove Tree
8a	Lodgepole Pine	18	Codominant stem,Live	Mistletoe bottom 50% pruning would reduce crown to less than 40% thin residual crowns ,Remove Tree
7	White/Red Fir	38	Exposed Roots/Root Decay,Live	Remove Tree,Suspected anossus infection in adj stump is completely rotten
5	Lodgepole Pine	14	Codominant stem,Live	Remove Tree
4	Lodgepole Pine	2	Live	Trim & reduce ladder field across prop line & within 100ft
3	Lodgepole Pine	18	Codominant stem,Live	2-18" trees here Mistletoe in all,Remove Trees
2	White/Red Fir	18	Codominant stem,Live	Red fir ,Remove Tree
1	Lodgepole Pine	18	Live	Asymmetrical trim, remove if trim removes more than 50% live crown

Kirkwood 2022 Hazard Tree Assessment Overview Map

● Kirkwood Hazard Trees



0 400 800 1,600 Feet

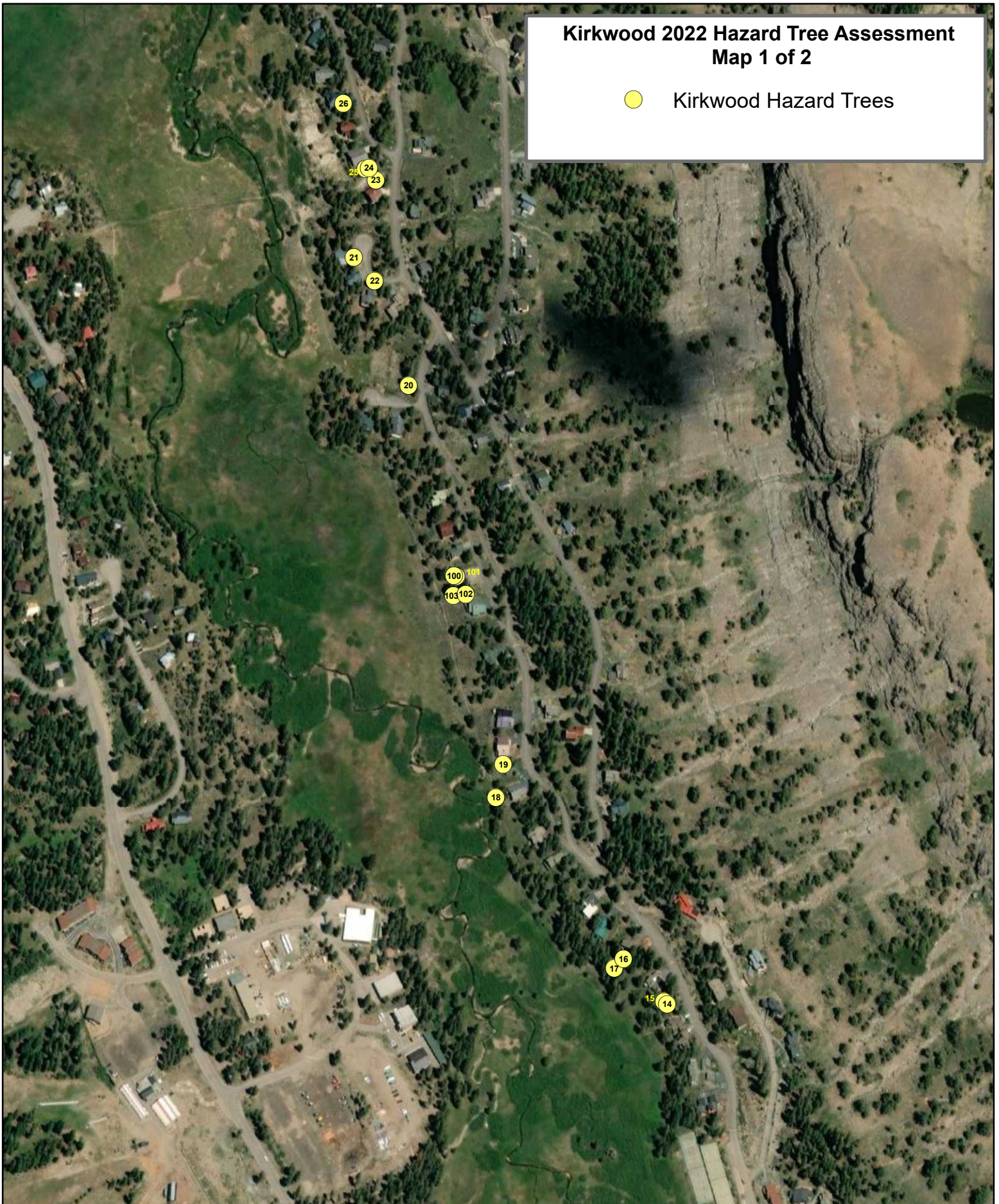
1:8,000
1 inch = 667 feet



Feather River Forestry LLC
P.O. Box 1411
Quincy, CA. 95971
(530) 927-7095

Kirkwood 2022 Hazard Tree Assessment Map 1 of 2

● Kirkwood Hazard Trees



0 265 530 1,060 Feet

1:5,351
1 inch = 446 feet



Feather River Forestry LLC
P.O. Box 1411
Quincy, CA. 95971
(530) 927-7095

Kirkwood 2022 Hazard Tree Assessment Map 2 of 2

● Kirkwood Hazard Trees



0 145 290 580 Feet

1:2,973
1 inch = 248 feet



Feather River Forestry LLC
P.O. Box 1411
Quincy, CA. 95971
(530) 927-7095

ITEM 2



July 27, 2022

Tri-County Technical Advisory Committee
Amador County Planning Department
810 Court Street
Jackson, CA 95642

Re: Hazardous Tree Removal – KMPUD Facilities

Dear Committee Members:

Kirkwood Meadows Public Utility District (KMPUD) requests approval to remove nineteen (19) hazardous trees threatening KMPUD facilities. These trees, listed below, have been identified and marked by a Registered Professional Forester.

Tree #	Location	Direction	Diameter (in)	Species	GPS Coordinates
1	CSB	South	12	Lodge Pole	10 S 0754745 4286438
2	CSB	South	13	Lodge Pole	10 S 0754745 4286438
3	CSB	South	10	Lodge Pole	10 S 0754743 4286440
4	CSB	East	8	Lodge Pole	10 S 0754744 4286459
5	CSB	East	24	Lodge Pole	10 S 0754745 4286465
6	CSB	East	36	Lodge Pole	10 S 0754746 4286478
7	Wastewater Plant	Southeast	20	Lodge Pole	10 S 0754718 4286532
8	Wastewater Plant	Northeast	18	Lodge Pole	10 S 0754707 4286576
9	Wastewater Plant	North	24	Lodge Pole	10 S 0754691 4286583
10	Well	East	6	Lodge Pole	10 S 0754755 4286331
11	Well	East	6	Lodge Pole	10 S 0754756 4286335
12	Well	East	8	Lodge Pole	10 S 0754759 4286331
13	Powerhouse	East	6	Lodge Pole	10 S 0754757 4286336
14	Powerhouse	North	26	Lodge Pole	10 S 0755297 4286162
15	Powerhouse	Northeast	40	Red Fir	10 S 0755342 4286142
16	Powerhouse	East	40	Red Fir	10 S 0755343 4286113
17	Powerhouse	East	48	Red Fir	10 S 0755363 4280109
18	Powerhouse	East	44	Red Fir	10 S 0755345 4286110
19	Powerhouse	North	48	Red Fir	10 S 0755268 4286167

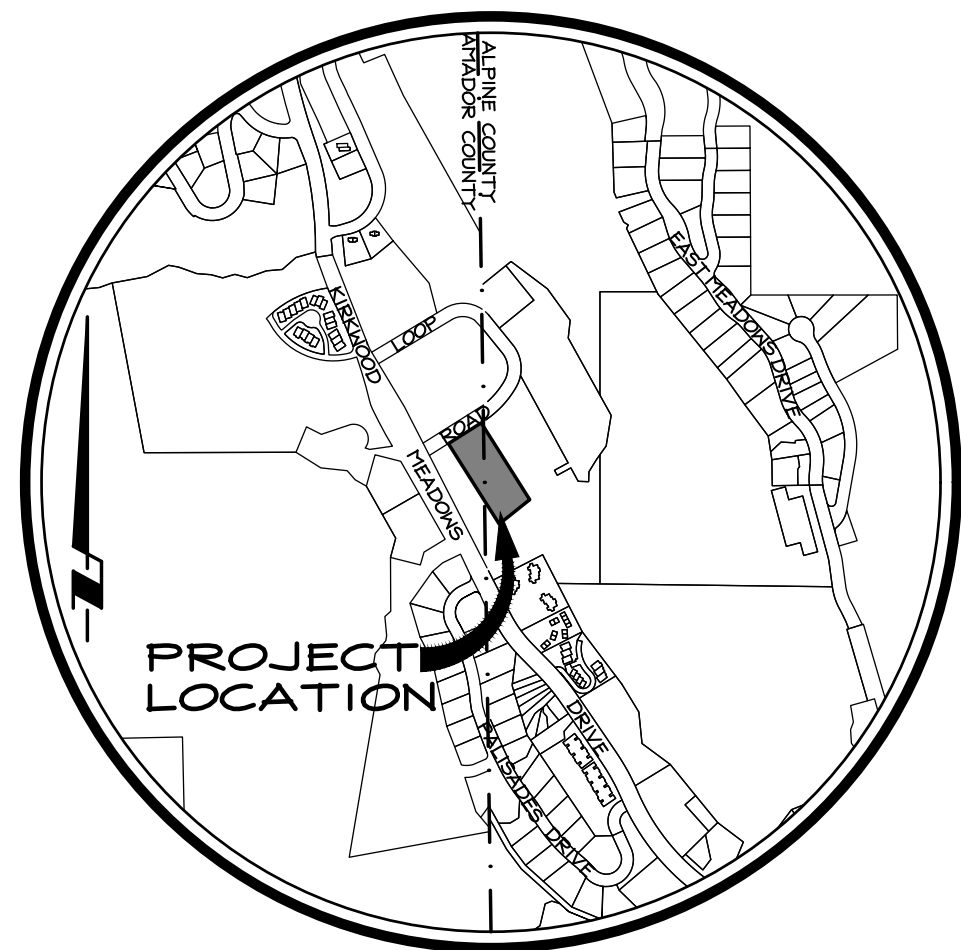
Thank you for your consideration of this request.

Sincerely,

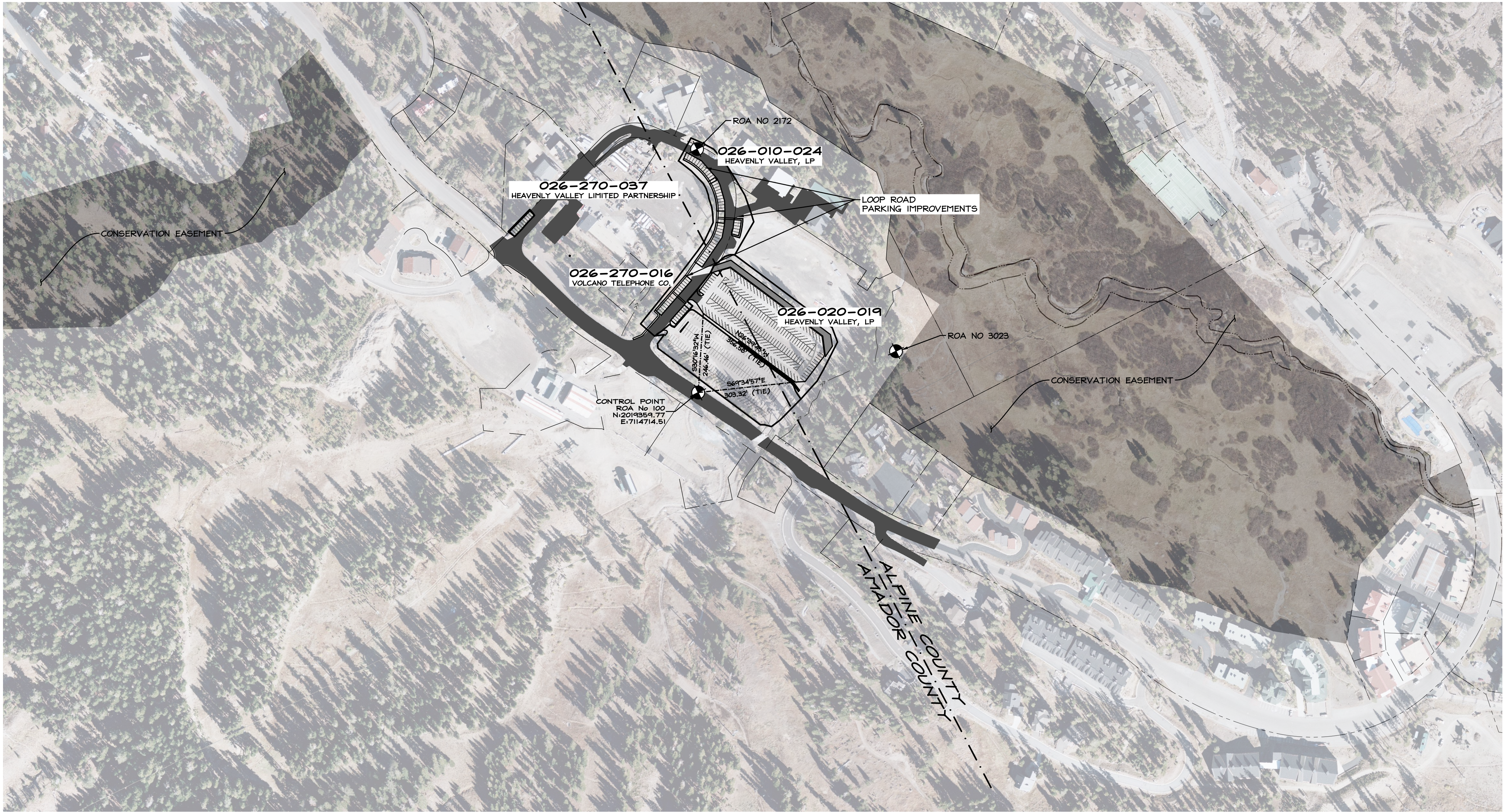
Brandi Benson
Operations Manager
Kirkwood Meadows Public Utility District

ITEM 3

IMPROVEMENT PLANS FOR
LOOP ROAD
AMADOR COUNTY & ALPINE COUNTY, CALIFORNIA



VICINITY MAP



PROJECT SUMMARY

A.P.N. 026-270-034
OWNER: HEAVENLY VALLEY, LP

ENGINEER: R.O. ANDERSON ENGINEERING, INC.
P.O. BOX 2224
MINDEN, NEVADA 89423
(775) 782-2322

SHEET INDEX

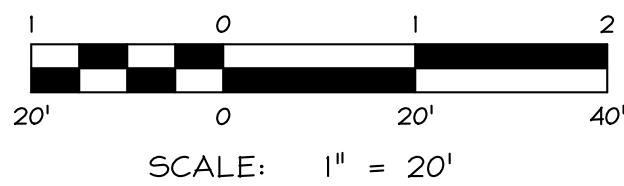
- C01 - COVER SHEET
- C02 - LEGEND, ABBREVIATIONS, & NOTES
- C03 - LOOP ROAD DEMOLITION & EROSION CONTROL PLAN
- C04 - LOOP ROAD SITE & GRADING PLAN
- C05 - DETAILS

APPROVALS

AMADOR COUNTY _____ DATE _____
ALPINE COUNTY _____ DATE _____



NO.	DATE	REVISION BLOCK	BY



R.O. Anderson
REGISTERED PROFESSIONAL ENGINEER
NO. 0041711
EXP. 3/31/24
CIVIL
STATE OF CALIFORNIA

MINDEN 1603 Emerald Ave P.O. Box 2224 Minden, NV 89423 p 775.782.2322 f 775.782.7084
RENO 9060 Double Diamond Pkwy, Unit 15 Reno, NV 96001 p 775.782.2322 f 775.782.7084

LOOP ROAD IMPROVEMENTS
VAIL RESORTS - KIRKWOOD MOUNTAIN RESORT

COVER SHEET



DRAWN: MCJ
ENGINEER: RTS
SCALE: AS SHOWN
DATE: 12/15/2021
JOB: 1919-007
DRAWING: PLOT STAMP
SHEET: C01
OF: 5 SHEETS

7/6/2022

SYMBOL LEGEND

EXISTING	PROPOSED
	CENTERLINE MONUMENT
	COMMUNICATION MANHOLE
	COMMUNICATION VAULT
	ELECTRICAL/POWER MANHOLE
	ELECTRICAL/POWER VAULT
	ELECTRICAL/POWER PULL BOX
	ELECTRICAL/POWER TRANSFORMER
	FIRE HYDRANT
	GAS VALVE
	GAS METER
	REVISION NUMBER
	SANITARY SEWER MANHOLE
	SANITARY SEWER CLEANOUT
	SIGN
	STORM DRAIN CATCH BASIN (SINGLE)
	STORM DRAIN DROP INLET
	STORM DRAIN FLARED END SECTION
	STORM DRAIN MANHOLE (CONCENTRIC)
	STREET LIGHT (DECORATIVE)
	STREET LIGHT (COBRA STYLE)
	SURVEY CONTROL POINT
	UTILITY POLE
	UTILITY GUY POLE
	UTILITY GUY ANCHOR
	WATER METER (SINGLE)
	WATER METER (SINGLE)
	WATER METER (DOUBLE)
	WATER FLUSH VALVE
	WATER VALVE

ABBREVIATIONS

AASHTO.....AMERICAN ASSOCIATION OF STATE HIGHWAY AND TRANSPORTATION OFFICIALS	N.....NORTH
AB.....AGGREGATE BASE	NAC.....NEVADA ADMINISTRATIVE CODE
AC.....ASPHALT CONCRETE	NDEP.....NEVADA DIVISION OF ENVIRONMENTAL PROTECTION
ADA.....AMERICANS WITH DISABILITIES ACT OF 1990	NDOT.....NEVADA DEPARTMENT OF TRANSPORTATION
ADT.....AVERAGE DAILY TRAFFIC	NE.....NORTHEAST
ALT.....ALTITUDE	NFIP.....NATIONAL FLOOD INSURANCE PROGRAM
ANSI.....AMERICAN NATIONAL STANDARDS INSTITUTE	NO.#.....NUMBER
APN.....ASSESSOR'S PARCEL NUMBER	NOAA.....NATIONAL OCEANIC AND ATMOSPHERIC ADMINISTRATION
APPROX.....APPROXIMATELY	NRCS.....NATIONAL RESOURCE CONSERVATION
APWA.....AMERICAN PUBLIC WORKS ASSOCIATION	NRS.....NEVADA REVISED STATUTES
ARV.....AIR RELEASE VALVE	NTS.....NOT TO SCALE
ASCE.....AMERICAN SOCIETY OF CIVIL ENGINEERS	NA.....NORTHWEST
ASTM.....AMERICAN SOCIETY OF TESTING AND MATERIALS	
AT.....AT	OC.....ON CENTER
AWS.....AMERICAN WELDING SOCIETY	OD.....OUTER DIAMETER
AWWA.....AMERICAN WATER WORKS ASSOCIATION	OSHA.....OCCUPATIONAL SAFETY AND HEALTH ACT
	O/H.....OVERHEAD
BC.....BEGIN CURVE	±.....PLUS OR MINUS
BCR.....BEGINNING OF CURB RETURN	P.....POWER
BFE.....BASE FLOOD ELEVATION	PC.....POINT OF CURVATURE
BLD.....BUILDING	PD.....POLY ETHYLENE
BW.....BACK OF WALK	PED.....PARKING
BVC.....BEGIN VERTICAL CURVE	%.....PERCENT
	PIP.....PROTECT IN PLACE
CAG.....CURB AND GUTTER	PL.....PROPERTY LINE
CB.....CATCH BASIN	PNT.....POINT
CF.....CUBIC FOOT	PSI.....POUNDS PER SQUARE INCH
CL.....CENTER LINE	PT.....POINT OF TANGENCY
CMP.....CORRUGATED METAL PIPE	PUE.....PUBLIC UTILITY EASEMENT
CO.....CLEAN OUT	PVC.....POLYVINYL CHLORIDE
COMP.....COMPACTION	
CY.....CUBIC YARD	R.....RADIUS
	RCBC.....REINFORCED CONCRETE BOXED CULVERT
°.....DEGREES	RCP.....REINFORCED CONCRETE PIPE
DCCD.....DOUGLAS COUNTY COMMUNITY DEVELOPMENT	ROW.....RIGHT OF WAY
DF.....DEEPEND FOOTING	
DG.....DECOMPOSED GRANITE	S.....SLOPE
DI.....DROP INLET	S.....SOUTH
DIA(Ø).....DIAMETER	SAD.....SURFACE AREA DISTURBANCE
	SD.....STORM DRAIN
E.....EAST	SDMH.....STORM DRAIN MANHOLE
EA.....EACH	SDR.....STANDARD DIMENSION RATIO
EC.....END CURVE	SE.....SOUTHEAST
ECR.....END OF CURB RETURN	SF.....SQUARE FOOT(FEET)
ELEC.....ELECTRICAL	SERV.....SERVICE
ELEV.....ELEVATION	SS.....SANITARY SEWER
EPV.....EDGE OF PAVEMENT	SSMH.....SANITARY SEWER MANHOLE
EPA.....ENVIRONMENTAL PROTECTION AGENCY	ST.....STREET
EVC.....END VERTICAL CURVE	STA.....STATION
EW.....EDGE OF WATER	STD.....STANDARD
EX.....EXISTING	SW.....SOUTHWEST
	SWPPP.....STORMWATER POLLUTION PREVENTION PLAN
FDC.....FIRE DEPARTMENT CONNECTION	
FEMA.....FEDERAL EMERGENCY MANAGEMENT AGENCY	TBC.....TOP BACK OF CURB
FF.....FINISHED FLOOR	TC.....TOP OF CURB
FG.....FINISHED GRADE	TEL.....TELEPHONE
FH.....FIRE HYDRANT	TOE.....TOE OF SLOPE
FL.....FLOWLINE	TOP.....TOP OF SLOPE
FNC.....FENCE	TV.....TELEVISION
FND.....FOUND MONUMENT, CORNER OR CONTROL POINT	TW.....TOP OF WALL
FS.....FIRE STUB	TYP.....TYPICAL
FT(°).....FOOT(FEET)	
	U.....UTILITY
GB.....GRADE BREAK	UBC.....UNIFORM BUILDING CODE
GID.....GENERAL IMPROVEMENT DISTRICT	UG.....UNDERGROUND
GPM.....GALLONS PER MINUTE	USACE.....UNITED STATES ARMY CORPS OF ENGINEERS
GR.....GRAVEL	USBR.....UNITED STATES BUREAU OF RECLAMATION
GS.....GROUND SHOT	USGS.....UNITED STATES GEOLOGICAL SURVEY
H/C.....HANDICAP	VC.....VERTICAL CURVE
HDPE.....HIGH DENSITY POLYETHYLENE	VG.....VALLEY GUTTER
HORIZ.....HORIZONTAL	VERT.....VERTICAL
	VPC.....VERTICAL POINT OF CURVATURE
ID.....INNER DIAMETER	VPT.....VERTICAL POINT OF TANGENCY
IE.....INVERT ELEVATION	
IN(°).....INCH	W.....WEST
INC.....INCORPORATED	W.....WITH
INT.....INTERSECTION	WV.....WATER GATE VALVE
IRRIG.....IRRIGATION	YR.....YEAR
L.....LEFT	
LAT.....LATERAL	
LS.....LUMP SUM	
M.....METER	
MAX.....MAXIMUM	
MGD.....MILLION GALLONS PER DAY	
MGSD.....MINDEN GARDNERVILLE SANITATION DISTRICT	
MH.....MANHOLE	
MI.....MILE	
MIN.....MINIMUM	
MISC.....MISCELLANEOUS	
MPH.....MILES PER HOUR	
MUTCD.....MANUAL OF UNIFORM TRAFFIC CONTROL DEVICES	

GENERAL NOTES

- CONTRACTOR SHALL COMPLY WITH ALL FEDERAL, STATE AND LOCAL LAWS DURING THE COURSE OF CONSTRUCTION.
- SWPPP SHALL BE DEVELOPED AND IMPLEMENTED FOR SPECIFIC USE AT THE PROJECT SITE PRIOR TO COMMENCEMENT OF CONSTRUCTION, AND INCLUDE MEASURES SPECIFIED BELOW. APPROPRIATE MEASURES SHALL BE IMPLEMENTED TO ENSURE CONTAINMENT OF HAZARDOUS MATERIAL, INCLUDING CHECKING FOR LEAKS AND REPAIRING, AND USE OF DESIGNATED FUELING AND MAINTENANCE AREAS.
- ALL WORK SHALL BE PERFORMED IN ACCORDANCE WITH THE CONDITIONS OF FEDERAL, STATE, AND LOCAL LAWS, REGULATIONS, PERMITS, AND OTHER APPLICABLE REQUIREMENTS. SPECIAL ATTENTION IS DIRECTED TO CALIFORNIA DEPARTMENT OF FORESTRY AND FIRE PROTECTION, GREAT BASIN AIR POLLUTION DISTRICT, US ARMY CORPS OF ENGINEERS, CALIFORNIA DEPARTMENT OF FISH AND GAME, CENTRAL VALLEY REGIONAL WATER QUALITY CONTROL BOARD AND OTHER AGENCIES' REQUIREMENTS.
- SITE IMPROVEMENT SHALL BE IN ACCORDANCE WITH ALPINE AND AMADOR COUNTY IMPROVEMENT STANDARDS. WORK ITEMS NOT ADDRESSED IN THESE IMPROVEMENT STANDARDS SHALL CONFORM TO THE MOST RECENT EDITION OF THE STANDARD SPECIFICATIONS AND STANDARD PLANS OF THE CALIFORNIA DEPARTMENT OF TRANSPORTATION AND ACCEPTED ENGINEERING PRACTICE.
- THE CONTRACTOR SHALL BE RESPONSIBLE FOR THE LOCATION AND/OR PROTECTION OF ALL EXISTING AND PROPOSED PIPING, UTILITIES, STRUCTURES, ADJACENT STREETS, AND IMPROVEMENTS DURING THE PERIOD OF CONSTRUCTION.
- THE CONTRACTOR SHALL BE RESPONSIBLE FOR NOTIFYING THE ENGINEER OF ANY DISCREPANCIES IN THE IMPROVEMENT PLANS.
- THE PAVEMENT SURFACE WHEN COMPLETED, SHALL BE SMOOTH, DENSE, WELL BONDED AND OF UNIFORM TEXTURE AND APPEARANCE. ALL AREAS SHALL DRAIN AND BE FREE OF STANDING WATER.
- THE ENGINEER OF RECORD SHALL PROVIDE THE JURISDICTIONAL AUTHORITIES WITH A SIGNED AND SEALED SET OF RECORD DRAWINGS. THE RECORD DRAWINGS SHALL CLEARLY BEAR THE STAMP "RECORD INFORMATION ON EACH SHEET". THE ENGINEER OF RECORD SHALL PROVIDE AN OPINION LETTER REGARDING THE CONSTRUCTION SIMILAR TO THE FOLLOWING:
 - I HEREBY CERTIFY THAT I AM A LICENSED ENGINEER IN THE STATE OF CALIFORNIA. TO THE BEST OF MY KNOWLEDGE, INFORMATION AND BELIEF, THE PROJECT WAS CONSTRUCTED IN GENERAL CONFORMANCE WITH THE PLANS AND SPECIFICATIONS, AND IN MY PROFESSIONAL OPINION, IS IN COMPLIANCE WITH APPLICABLE LAWS, CODES AND ORDINANCES.

GRADING NOTES

- ALL WORK SHALL BE DONE IN ACCORDANCE WITH THE INTERNATIONAL BUILDING CODE, OSHA REQUIREMENTS FOR EXCAVATION, AND SPECIAL REQUIREMENTS OF THE PERMIT. VIOLATIONS WILL RESULT IN THE STOPPAGE OF ALL WORK UNTIL THE VIOLATION IS CORRECTED.
- NO WORK SHALL BE STARTED WITHOUT FIRST NOTIFYING THE COUNTY ENGINEERS AT (209) 228-6371 AT LEAST 2 WORKING DAYS BEFORE WORK IS COMMENCED.
- SLOPES SHALL BE NO STEEPER THAN 2 HORIZONTAL TO 1 VERTICAL, OR AS DETERMINED BY THE SOILS ENGINEER AND APPROVED BY THE COUNTIES.
- FILLS SHALL BE PLACED IN ACCORDANCE WITH THE REQUIREMENTS OF THE "CALTRANS STANDARD PLANS AND SPECIFICATIONS".
- FILL AREAS SHALL BE CLEARED OF VEGETATION AND DEBRIS, SCARIFIED, AND BE APPROVED BY THE ENGINEER OF RECORD PRIOR TO THE PLACING OF FILL.
- PROTECTIVE MEASURES AND TEMPORARY DRAINAGE PROVISIONS SHALL BE USED TO PROTECT ADJOINING PROPERTIES DURING CONSTRUCTION OF IMPROVEMENTS.
- DUST SHALL BE CONTROLLED BY THE CONTRACTOR TO THE SATISFACTION OF THE COUNTIES.
- ALL STREETS SHALL BE MAINTAINED FREE OF DUST, MUD AND OTHER DEBRIS CAUSED BY GRADING AND OTHER SITE IMPROVEMENT ACTIVITIES.
- THE DEVELOPER'S ENGINEER OR SURVEYOR SHALL SET GRADE STAKES FOR ALL DRAINAGE DEVICES AND THE CONTRACTOR SHALL OBTAIN INSPECTION BEFORE PLACING CONCRETE.
- NO ROCK OR SIMILAR MATERIAL GREATER THAN 4" IN DIAMETER SHALL BE PLACED IN THE FILL UNLESS RECOMMENDATIONS FOR SUCH PLACEMENT HAVE BEEN RECOMMENDED BY THE ENGINEER OF RECORD AND APPROVED BY THE COUNTIES.
- A GEOTECHNICAL ENGINEER SHALL APPROVE ALL GRADING INCLUDING COMPACTION REQUIREMENTS AND THE STABILITY OF SLOPES CREATED, EXISTING OR REMAINING.
- IN THE EVENT OF CHANGES ARISING DURING CONSTRUCTION, THE DEVELOPER SHALL NOTIFY THE ENGINEER OF RECORD WHO WILL BE RESPONSIBLE FOR DETERMINING AN ACCEPTABLE SOLUTION AND REVISING THE PLANS FOR REVIEW AND APPROVAL BY THE COUNTIES. NO CHANGES IN THE DESIGN WILL BE PERMITTED UNLESS WRITTEN APPROVAL IS GIVEN BY THE COUNTIES.
- EROSION CONTROL:
 - A STANDBY CREW FOR EMERGENCY WORK SHALL BE AVAILABLE AT ALL TIMES. NECESSARY MATERIALS SHALL BE AVAILABLE ON-SITE AND STOCKPILED AT APPROVED LOCATIONS TO FACILITATE RAPID CONSTRUCTION OF TEMPORARY DEVICES OR TO REPAIR DAMAGED EROSION CONTROL MEASURES.
 - AFTER A RAINSTORM, ALL SILT AND DEBRIS SHALL BE REMOVED FROM CHECK BERMS AND DESILTING FACILITIES SO AS NOT TO AFFECT THEIR ABILITY TO PERFORM THE INTENDED FUNCTION. GRADED SLOPE SURFACE PROTECTION MEASURES DAMAGED DURING THE RAINSTORM SHALL ALSO BE REPAIRED.
 - FILL SLOPES AT THE PROJECT PERIMETER MUST DRAIN AWAY FROM THE TOP OF THE SLOPE AT THE CONCLUSION OF EACH WORKING DAY.
- DISPOSAL OF STUMPS AND BRUSH SHALL EITHER BE CHIPPED ON-SITE, OR TAKEN TO A FACILITY FOR DISPOSAL.
- ORGANIC LADEN SOILS SHALL BE STRIPPED AND STORED FOR USE AS TOPSOIL DURING FINAL GRADING.
- ALL DISTURBED AREAS SHALL BE REVEGETATED.

SPILL PREVENTION AND RESPONSE

- CONTRACTOR SHALL STEAM CLEAN ALL EQUIPMENT THAT WILL BE WORKING ON-SITE AT SHOP PRIOR TO COMMENCING CONSTRUCTION.
- ALL EQUIPMENT SHALL BE CHECKED FOR LEAKS AND REPAIRED PRIOR TO COMMENCING CONSTRUCTION.
- CONTRACTOR SHALL INSURE INTEGRITY OF EROSION CONTROL MEASURES DURING THE COURSE OF CONSTRUCTION.
- CONTRACTOR SHALL USE DRIP PANS OR ABSORBENT MATS DURING FUELING AND MAINTENANCE TO PROTECT AGAINST SPILLS.
- SPILLED PETROLEUM PRODUCTS, CONTAMINATED SOILS OR WATER, AND ACCUMULATED SEDIMENTS SHALL BE CLEANED UP AND PROPERLY DISPOSED OF AT A LICENSED FACILITY. DISCHARGE OF SUCH MATERIALS TO THE STREAM CHANNEL OR DITCHES IS PROHIBITED.

LINETYPE LEGEND

EXISTING	PROPOSED	
		BUILDING ENVELOPE
		CENTERLINE OF RIGHT-OF-WAY
		MAJOR CONTOUR
		MINOR CONTOUR
		EASEMENT
		EP AND/OR LIP OF GUTTER
		FLOW LINE
		GAS LINE
		OVERHEAD POWER
		UNDERGROUND POWER
		SANITARY SEWER MAIN
		STORM DRAIN
		WATER MAIN
		RIGHT-OF-WAY
		FILTER FENCE
		GRADE BREAK
		CONSTRUCTION ENTRANCE
		PEDESTRIAN ACCESS ROUTE

PROJECT CONTROL

CONTROL POINT	NORTHING	EASTING	ELEVATION	DESCRIPTION
ROA NO. 100	2,019,359.81'	7,114,714.54'	7784.10'	SET MAG NAIL

BASIS OF BEARING

N89°50'55"E -- THE NORTH LINE OF THAT CERTAIN 712.88 ACRE PARCEL AS SHOWN ON THE RECORD OF SURVEY FOR KIRKWOOD ASSOCIATES, INC. FILED FOR RECORD OCTOBER 28, 1986 IN THE OFFICE OF RECORDER, EL DORADO COUNTY, CALIFORNIA IN BOOK 14 OF RECORDS OF SURVEY AT PAGE 77.

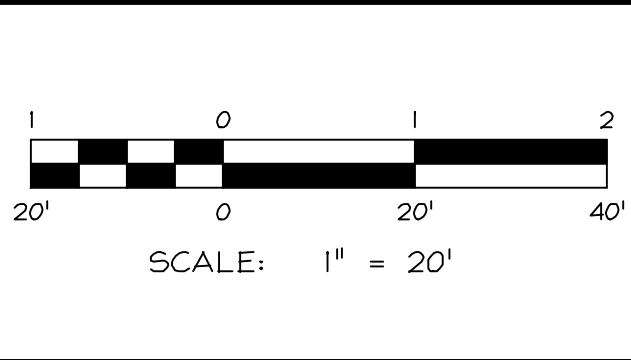
DATUM

VERTICAL DATUM FOR THIS PROJECT IS NAVD 88 BASED UPON GPS OBSERVATIONS.

SITE BENCHMARK: ROA NO. 100.

ELEVATION: 7784.10'

NO.	DATE	REVISION BLOCK	BY



R|O|Anderson
WWW.ROANDERSON.COM

MINDEN 4609 Emeraldale Ave
P.O. Box 2224
Pittsford, NY 14854
P 775.782.2322
F 775.782.7084

RENO 9060 Double
Diamond Pkwy, Unit 1B
Reno, NV 89423
P 775.782.2322
F 775.782.7084

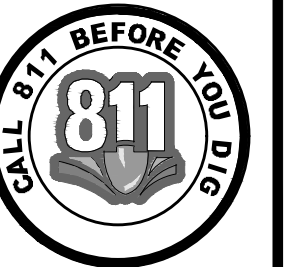
LOOP ROAD IMPROVEMENTS
VAIL RESORTS - KIRKWOOD MOUNTAIN RESORT

LEGEND,
ABBREVIATIONS,
& NOTES



DRAWN: MCJ	JOB: 1919-007
ENGINEER: RTS	DRAWING: PLOT STAMP
SCALE: AS SHOWN	SHEET: C02
DATE: 12/13/2021	OF: 5 SHEETS

1/6/2022



PERMIT SET - 12/13/2021

EROSION CONTROL NOTES

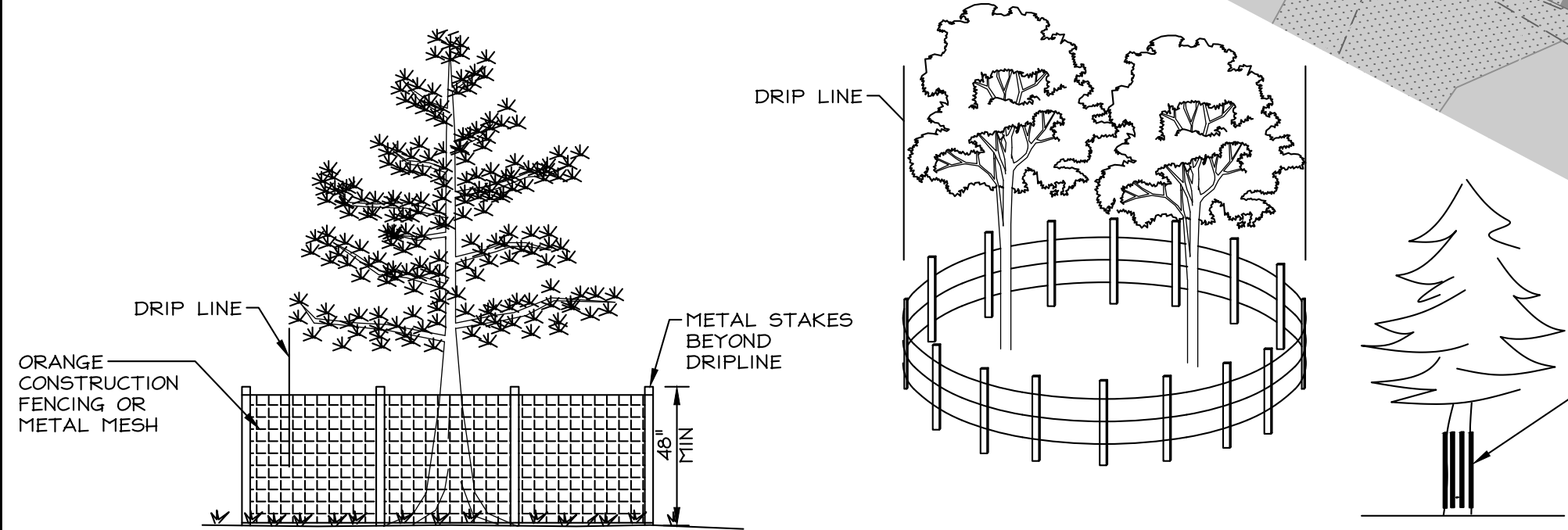
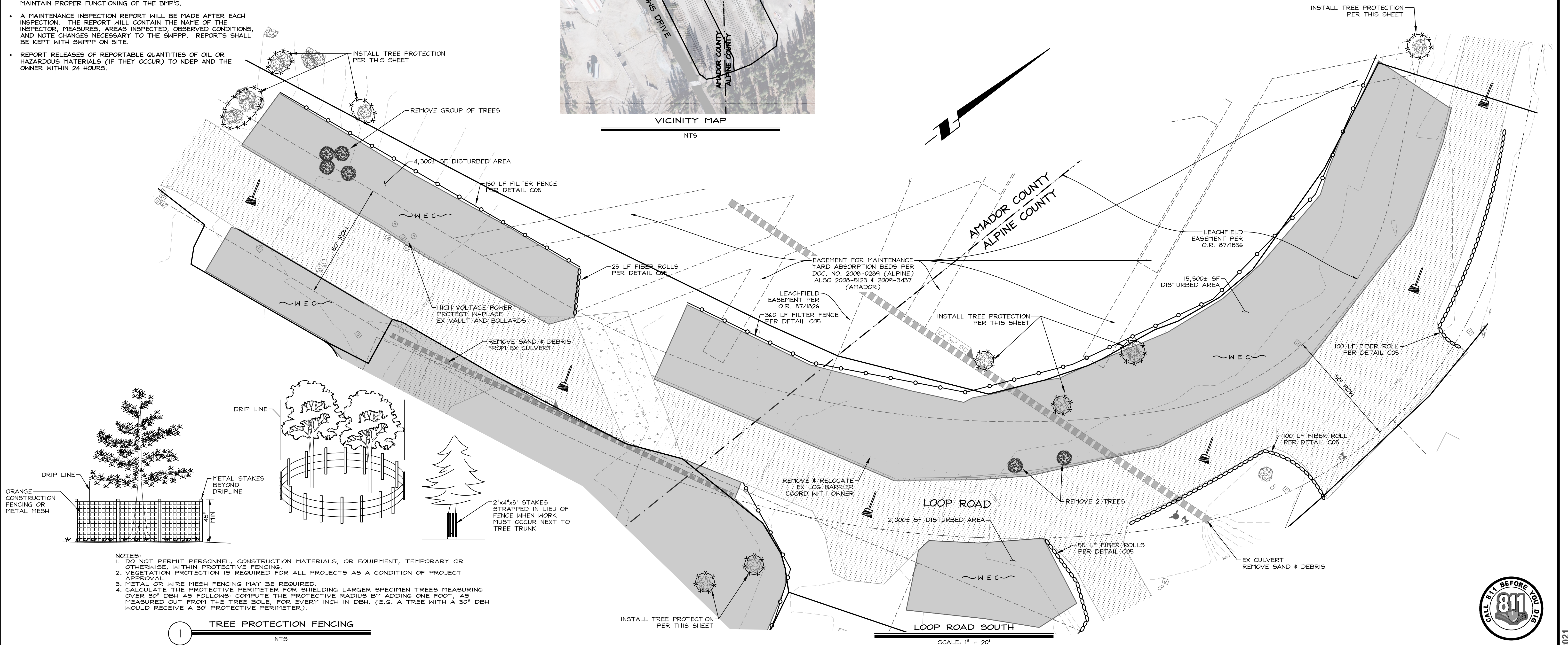
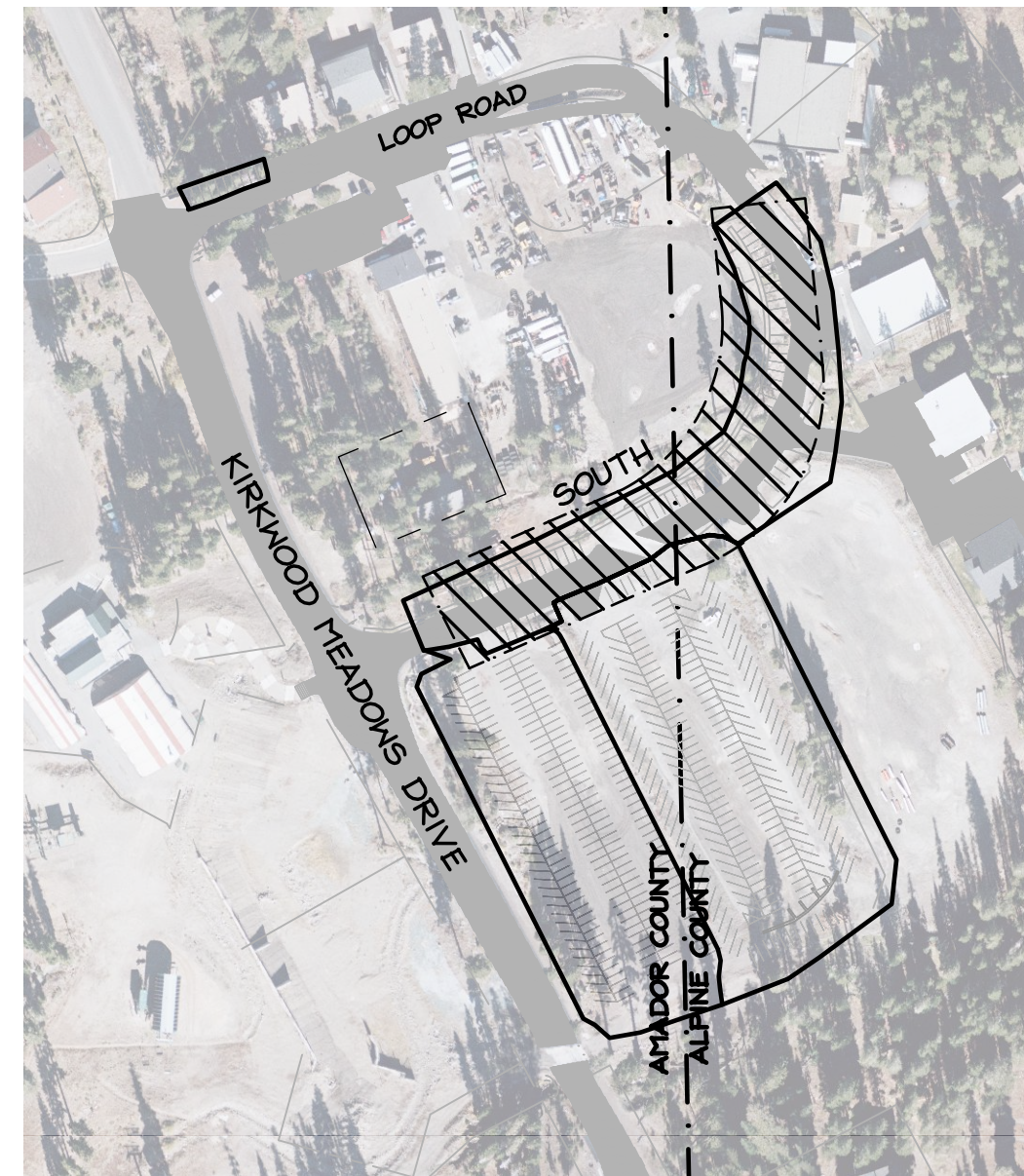
- PRIOR TO ANY EARTHWORK, THE CONTRACTOR SHALL FAMILIARIZE HIMSELF AND COMPLY WITH THE REQUIREMENTS OF THE STORMWATER POLLUTION PREVENTION PLAN (SWPPP) AND THE CONSTRUCTION STORMWATER PERMIT ISSUED BY NDEP.
- DUST SHALL BE CONTROLLED BY THE CONTRACTOR TO THE SATISFACTION OF THE COUNTY AND IN ACCORDANCE WITH THE PROJECT SWPPP AND THE CONSTRUCTION STORMWATER PERMIT ISSUED BY NDEP.
- THE CONTRACTOR SHALL MAINTAIN A CLEAN PROJECT SITE, REMOVING CONSTRUCTION DEBRIS AT THE END OF EACH ACTIVITY DAY. TRASH WILL BE HAULED TO THE DOUGLAS COUNTY TRANSFER STATION OR OTHER LICENSED DISPOSAL FACILITY. NO CONSTRUCTION WASTE MATERIALS SHALL BE BURIED ON SITE.
- THE CONTRACTOR SHALL MAINTAIN DEBRIS FREE CONSTRUCTION ROUTES, ADJACENT STREETS AND STORM DRAIN SYSTEMS.
- A STANDBY CREW FOR EMERGENCY WORK SHALL BE AVAILABLE AT ALL TIMES. NECESSARY MATERIALS SHALL BE AVAILABLE ON-SITE AND STOCKPILED AT APPROVED LOCATIONS TO FACILITATE RAPID CONSTRUCTION OF TEMPORARY DEVICES OR TO REPAIR DAMAGED EROSION CONTROL MEASURES.
- AT LEAST ONCE PER WEEK AND FOLLOWING A STORM EVENT OF 0.5 INCHES OR GREATER ALL BMP'S AND GRADED SLOPE SURFACE PROTECTION MEASURES SHALL BE INSPECTED TO VERIFY CONTINUED SATISFACTORY OPERATION AND REPAIRED OR REPLACED IF NECESSARY.
- ALL EROSION CONTROL MEASURES SHALL BE MAINTAINED IN GOOD WORKING ORDER. IF A REPAIR IS NECESSARY IT SHALL BE INITIATED WITHIN 24 HOURS OF REPORT.
- FILL SLOPES AT THE PROJECT PERIMETER MUST DRAIN AWAY FROM THE TOP OF THE SLOPE AT THE CONCLUSION OF EACH WORKING DAY.
- A SIX-FOOT HIGH PERIMETER FENCE OR A 24-HOUR GUARD SHALL BE POSTED ON THE SITE WHENEVER THE DEPTH OF WATER IN A FACILITY EXCEEDS 18 INCHES.
- BUILT UP SEDIMENT SHALL BE REMOVED AS NECESSARY TO MAINTAIN PROPER FUNCTIONING OF THE BMP'S.
- A MAINTENANCE INSPECTION REPORT WILL BE MADE AFTER EACH INSPECTION. THE REPORT WILL CONTAIN THE NAME OF THE INSPECTOR, MEASURES, AREAS INSPECTED, OBSERVED CONDITIONS, AND NOTE CHANGES NECESSARY TO THE SWPPP. REPORTS SHALL BE KEPT WITH SWPPP ON SITE.
- REPORT RELEASES OF REPORTABLE QUANTITIES OF OIL OR HAZARDOUS MATERIALS (IF THEY OCCUR) TO NDEP AND THE OWNER WITHIN 24 HOURS.

LEGEND

- FILTER FENCE PER DETAIL ON SHEET C07
- W E C WIND EROSION AND DUST CONTROL
- C W M HANDLING AND DISPOSAL OF CONCRETE AND CEMENT PER CONSTRUCTION ACCESS DETAIL HEREON
- M S MATERIAL DELIVERY, HANDLING AND STORAGE
- S M STOCKPILE MANAGEMENT
- S S SANITARY / SEPTIC WASTE MANAGEMENT
- SPILL PREVENTION AND CONTROL
- CONSTRUCTION ACCESS PER DETAIL ON SHEET C07
- STREET SWEEPING
- FIBER ROLLS / INLET PROTECTION
- TREE PROTECTION

GENERAL NOTES

- A. LOCATION OF FILTER FABRIC FENCE AND OTHER BMP'S MAY BE FIELD ADJUSTED WITH APPROVAL OF ENGINEER.
- B. ADJUST FRAMES, COVERS, RIMS, ETC. OF EXISTING INFRASTRUCTURE TO NEW GRADE AS NECESSARY, PER APPLICABLE STANDARD DETAIL.
- C. REMOVAL OF VEGETATION SHALL INCLUDE REMOVAL OF STUMP AND ROOT BALL AND FILLING OF HOLE LEFT BY ROOT BALL WITH DG IN COMPACTED LIFTS.
- D. PROTECT IN-PLACE ALL UTILITIES NOT SPECIFIED FOR REMOVAL



- NOTES:
- DO NOT PERMIT PERSONNEL, CONSTRUCTION MATERIALS, OR EQUIPMENT, TEMPORARY OR OTHERWISE, WITHIN PROTECTIVE FENCING.
 - VEGETATION PROTECTION IS REQUIRED FOR ALL PROJECTS AS A CONDITION OF PROJECT APPROVAL.
 - METAL OR WIRE MESH FENCING MAY BE REQUIRED.
 - CALCULATE THE PROTECTIVE PERIMETER FOR SHIELDING LARGER SPECIMEN TREES MEASURING OVER 30" DBH AS FOLLOWS: COMPUTE THE PROTECTIVE RADIUS BY ADDING ONE FOOT, AS MEASURED OUT FROM THE TREE BOLE, FOR EVERY INCH IN DBH. (E.G. A TREE WITH A 30" DBH WOULD RECEIVE A 30' PROTECTIVE PERIMETER).

1 TREE PROTECTION FENCING
NTS

NO.	DATE	REVISION BLOCK	BY



R/O Anderson
WINN-ROANDERSON.COM
MINDEN 1603 Emeraldale Ave P.O. Box 2224 Minden, NV 89423 P 775.782.2322 F 775.782.7064
RENO 9060 Double Diamond Pkwy, Unit 1B Reno, NV 89501 P 775.782.2322 F 775.782.7064

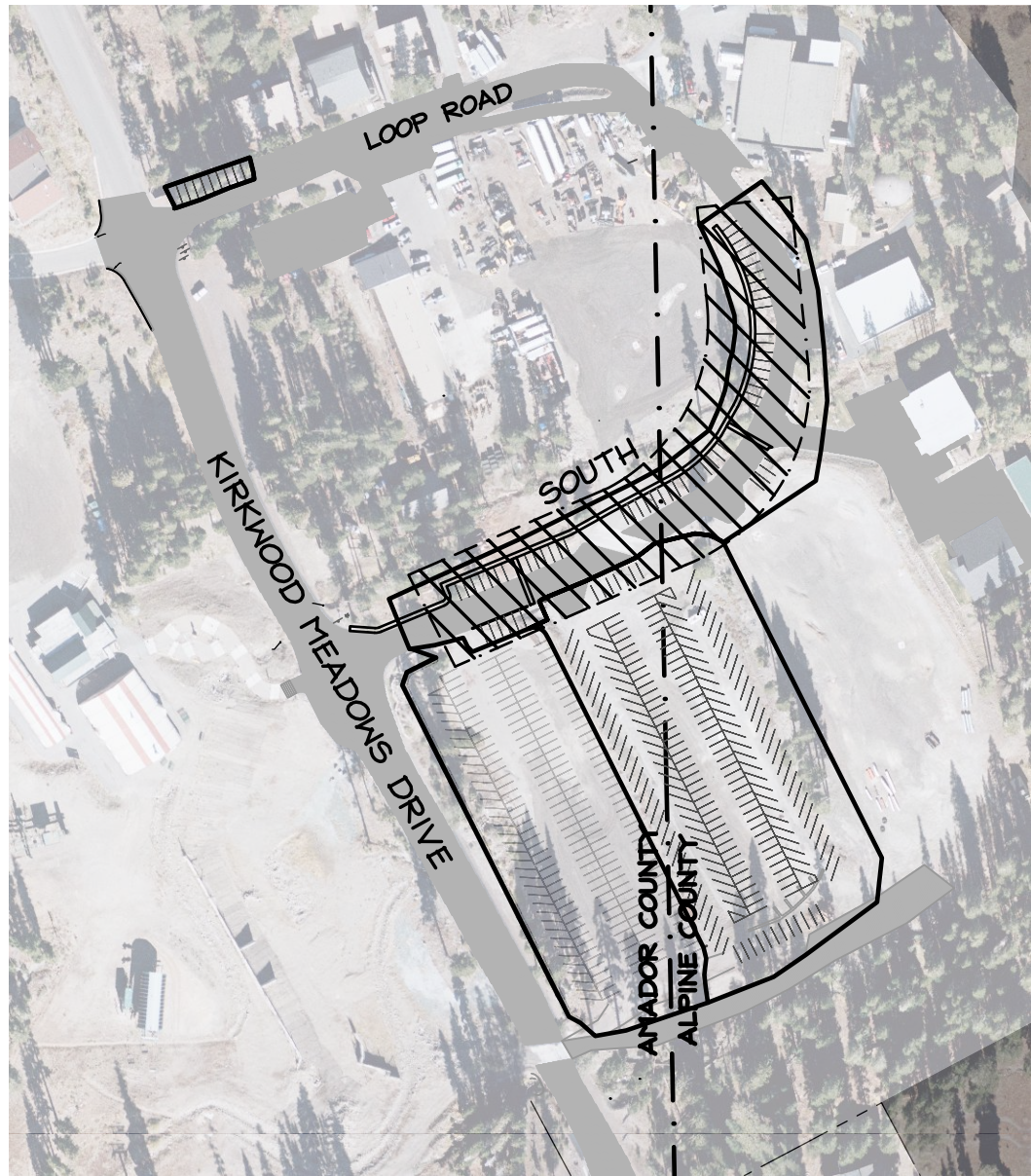
LOOP ROAD IMPROVEMENTS
VAIL RESORTS - KIRKWOOD MOUNTAIN RESORT

LOOP ROAD
DEMOLITION & EROSION
CONTROL PLAN

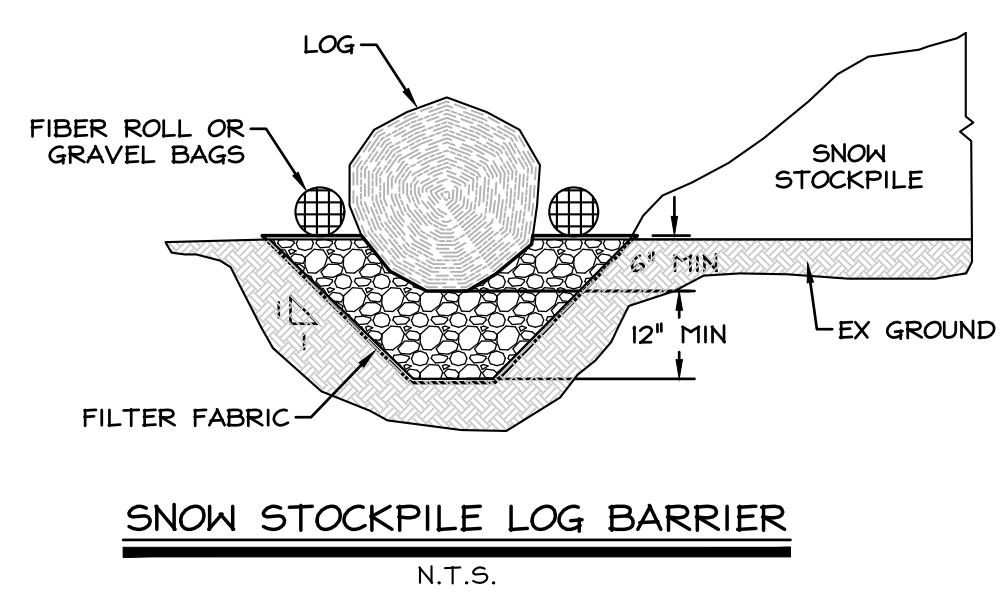
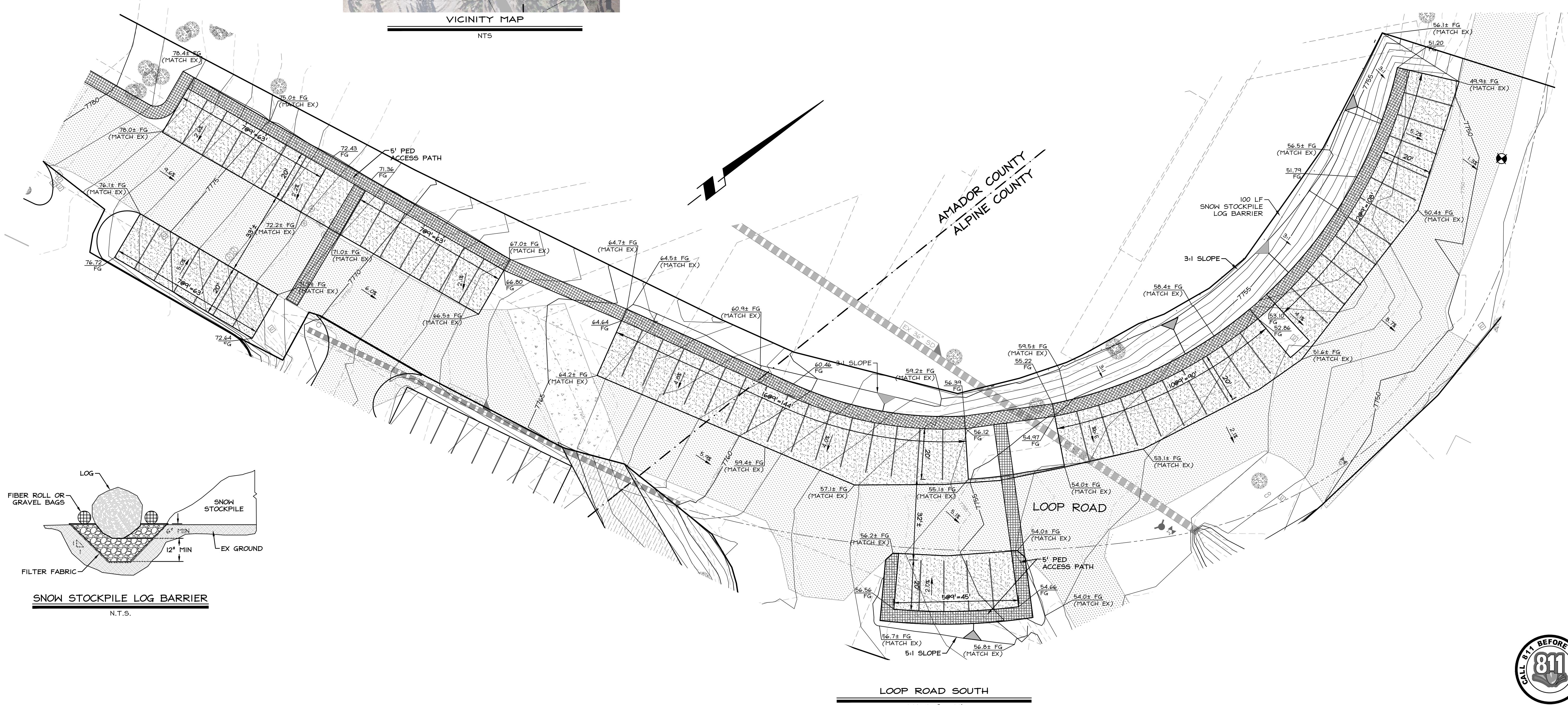
	DRAWN: MCJ	JOB: 1919-007
	ENGINEER: RTS	PLOT STAMP
	SCALE: AS SHOWN	SHEET: C03
	DATE: 7/6/2022	OF: 5 SHEETS



PERMIT SET - 12/15/2021



VICINITY MAP
NTS



SNOW STOCKPILE LOG BARRIER
N.T.S.

LOOP ROAD SOUTH
SCALE: 1" = 20'

NO.	DATE	REVISION BLOCK	BY



SCALE: 1" = 20'

RO Anderson
WWW.ROANDERSON.COM

MINDEN 1623 Emeraldale Ave
P.O. Box 2224
Minden, NV 89423
P 775.782.2322
F 775.782.7084

RENO 9260 Double
Diamond Pkwy, Unit 1B
Reno, NV 89501
P 775.782.2322
F 775.782.7084

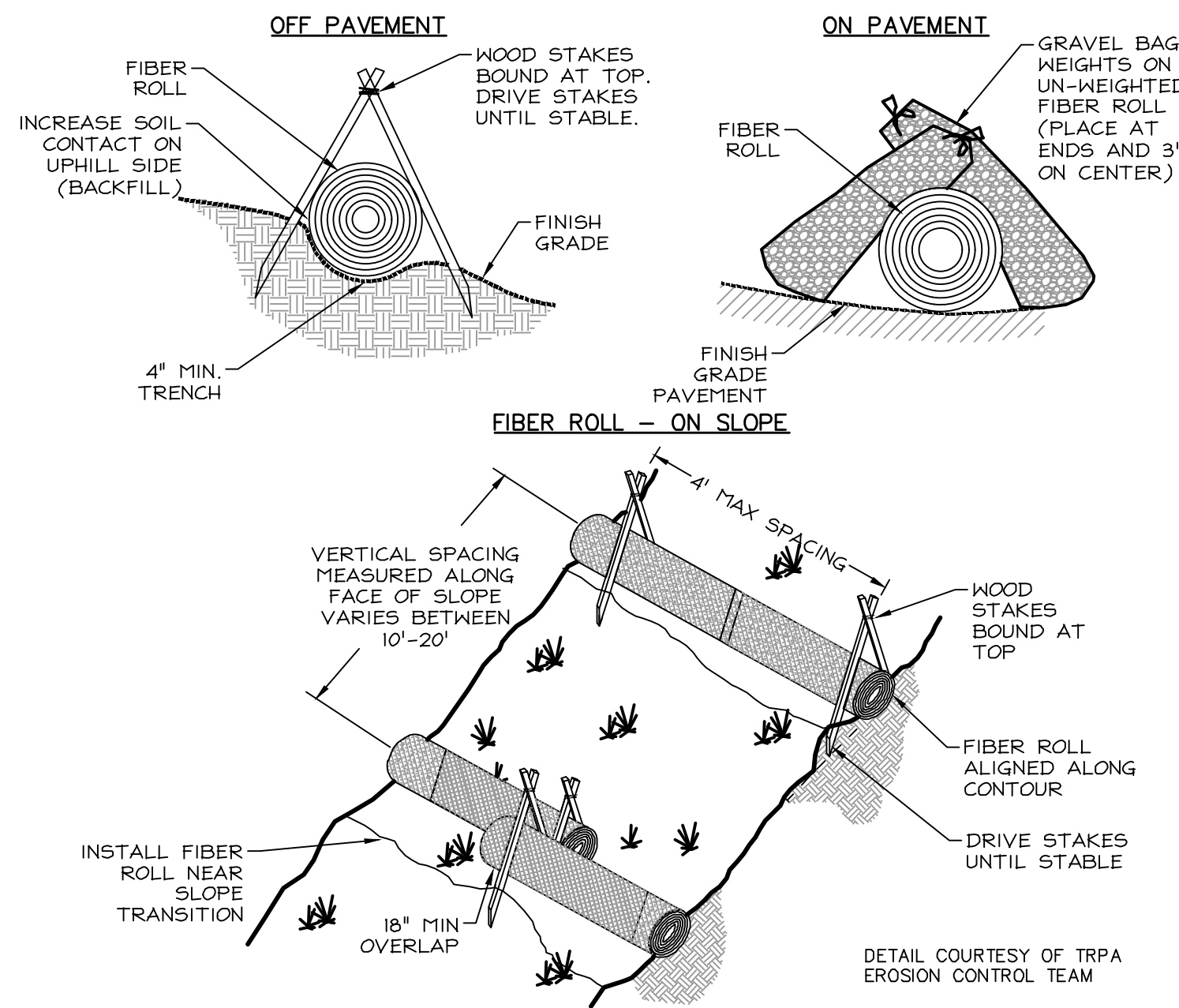
LOOP ROAD IMPROVEMENTS
VAIL RESORTS - KIRKWOOD MOUNTAIN RESORT

LOOP ROAD SITE
& GRADING PLAN

DRAWN: MCJ	JOB: 1919-007
ENGINEER: RTS	DRAWING: PLOT STAMP
SCALE: AS SHOWN	SHEET: C04
DATE: 12/21/2021	OF: 5 SHEETS

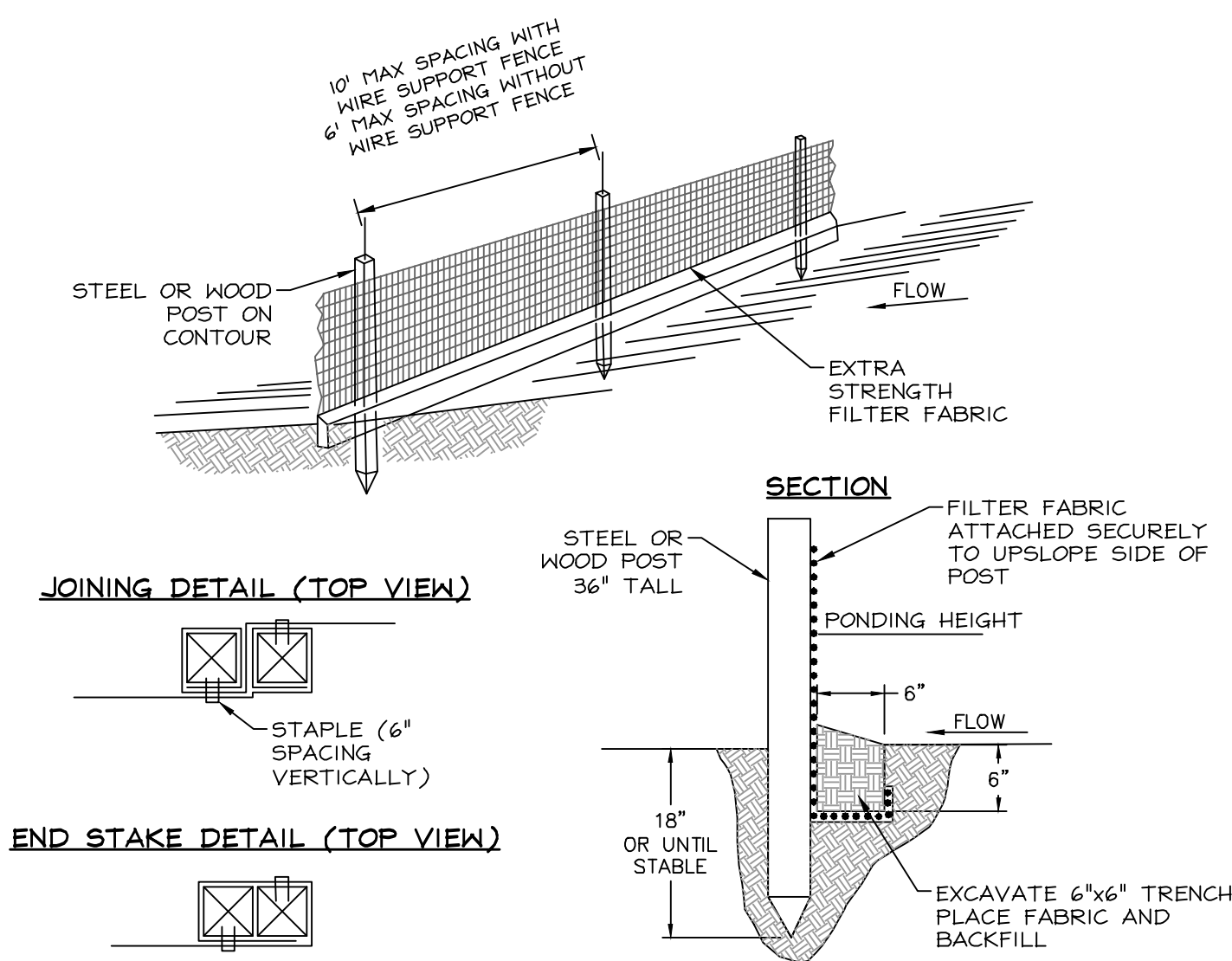


\\va-fp-02\Clients\Client_Files\1919\1919-007\CAD\Engineering\Improvement_Plan\TC-IMP\1919-007 SHEET'S-05-09-22.dwg 7/6/2022 11:09:00 AM Kristin Morton



- NOTES:**
1. INSTALL ALONG SLOPE CONTOUR, PERPENDICULAR TO SLOPE DIRECTION.
 2. INSTALL FROM BOTTOM OF SLOPE UP TO PREVENT ACCIDENTAL DOWNSLOPE CONTAMINATION.
 3. FIBER ROLLS MUST BE ENTRENCHED 1/3 TO 1/2 HEIGHT OF ROLL TO ENSURE MAXIMUM CONTACT SURFACE AREA WITH SOIL.
 4. ENSURE THAT THE FIBER ROLL MAKES GOOD CONTACT WITH THE SOIL AT ALL LOCATIONS; THERE SHALL BE NO GAPS BENEATH THE FIBER ROLL.
 5. FIBER ROLLS SHALL BE STAKED IN SUCH A MANNER THAT THEY ARE NOT DISTURBED BY WIND OR SHEET FLOW RUNOFF.
 6. IF MORE THAN ONE FIBER ROLL IS PLACED IN A ROW, THE ROLLS SHOULD BE OVERLAPPED A MINIMUM OF 18", NOT ABUTTED.
 7. TURN THE ENDS OF THE FIBER ROLL UP SLOPE TO PREVENT RUNOFF FROM GOING AROUND THE ROLL.
 8. FIBER ROLLS SHALL BE A MINIMUM 12" DIAMETER AND USED ON SLOPES LESS THAN 7%.
 9. INSPECT AND MAINTAIN FIBER ROLLS DAILY AND AFTER EACH STORM EVENT. REMOVE SEDIMENT DEPOSITS WHEN DEPOSITS REACH 1/3 HEIGHT OF INSTALLED BARRIER.

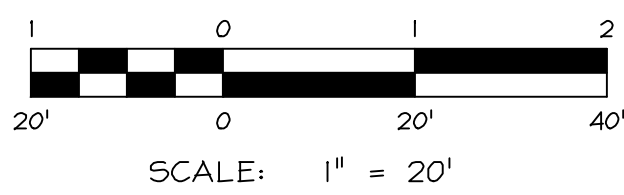
1 **FIBER ROLL**
NOT TO SCALE



- NOTES:**
1. USE PRINCIPALLY IN AREAS WHERE SHEET FLOW OCCURS.
 2. DO NOT USE IN STREAMS, CHANNELS, OR ANYWHERE FLOW IS CONCENTRATED. DO NOT USE FILTER FENCES TO DIVERT FLOW.
 3. DO NOT USE BELOW SLOPES SUBJECT TO CREEP, SLUMPING, OR LANDSLIDES.
 4. FILTER FENCE SHOULD BE WOVEN POLYPROPYLENE WITH A MINIMUM WIDTH OF 36 INCHES AND A MINIMUM TENSILE STRENGTH OF 100 LB FORCE.
 5. INSTALL ALONG A LEVEL CONTOUR, SO WATER DOES NOT POND MORE THAN 1.5 FT AT ANY POINT ALONG THE FILTER FENCE.
 6. THE MAXIMUM LENGTH OF SLOPE DRAINING TO ANY POINT ALONG THE FILTER FENCE SHOULD BE 100 FT OR LESS.
 7. THE MAXIMUM SLOPE PERPENDICULAR TO THE FENCE LINE SHOULD BE 1:1.
 8. PROVIDE SUFFICIENT ROOM FOR RUNOFF TO POND BEHIND THE FENCE AND TO ALLOW SEDIMENT REMOVAL EQUIPMENT TO PASS BETWEEN THE FILTER FENCE AND TOES OF SLOPES OR OTHER OBSTRUCTIONS.
 9. TURN THE ENDS OF THE FILTER FENCE UPHILL TO CREATE A "J" SHAPE, TO PREVENT STORM WATER FROM FLOWING AROUND THE FENCE.
 10. LEAVE AN UNDISTURBED OR STABILIZED AREA IMMEDIATELY DOWN SLOPE FROM THE FENCE WHERE FEASIBLE.
 11. FILTER FENCES SHOULD REMAIN IN PLACE UNTIL THE DISTURBED AREA IS PERMANENTLY STABILIZED.
 12. REMOVE SEDIMENT WHEN DEPOSITS REACH APPROXIMATELY 1/3 HEIGHT OF BARRIER.

2 **FILTER FENCE**
NOT TO SCALE

NO.	DATE	REVISION BLOCK	BY



R/O Anderson
WWW.ROANDERSON.COM
MINDEN 1608 Emeraldale Ave P.O. Box 2225 Minden, NV 89423 p 775.782.2322 f 775.782.7084
RENO 9060 Double Diamond Pkwy, Unit 1B Reno, NV 89521 p 775.782.2322 f 775.782.7084

LOOP ROAD IMPROVEMENTS
VAIL RESORTS - KIRKWOOD MOUNTAIN RESORT

DETAILS



DRAWN: MCJ	JOB: 1919-007
ENGINEER: RTS	DRAWING: PLOT STAMP
SCALE: AS SHOWN	SHEET: C05
DATE: 12/15/2021	OF: 5 SHEETS





August 8, 2022

Tri-County Technical Advisory Committee
Amador County Planning Department
810 Court Street
Jackson, CA 95642

Re: Loop Road Parking Proposal

Dear Committee Members:

On July 12, 2022, the District received the above referenced plans from Tri-TAC. This was the first time the District was made aware of this project as there had been no communication from Vail nor the Engineer prior to that date. On July 19, 2022, District Staff met with the District Engineer, Vail Staff, and R.O. Anderson's engineer.

The District conveyed the following concerns:

- Stormwater Drainage
 - Additional surface area would be created that would allow stormwater to sheet directly onto District property without mitigation.
 - The plans do not include any storm drainage improvements which will be necessary to rectify previous abandonment of the drainage system.
 - The existing storm drain system has not been operated nor maintained by Vail.
 - Vail previously retained RCI engineers to design the restoration of the drainage system that was abandoned by Kirkwood Mountain Resort.
 - Any project approval should require:
 - The restoration of the existing drainage system.
 - Construction of the improvements designed by RCI.
 - The plans call for cleaning the outlet of an existing storm drain. However, there is no plan to:
 - Confirm the inlet location and integrity of said storm drain.
 - The District has reason to believe that said storm drain is plugged and/or collapsed.
- Access to District Facilities
 - Parking perpendicular to the road may cause drivers to back into District property where the District has active heavy equipment, snow removal equipment, vehicles, and personnel regularly entering and exiting District property. This will therefore create a hazardous situation for both District Staff and Vail guests.
 - All proposed parking directly across from District ingress/egress locations should be eliminated.

- Some of the proposed parking stalls are immediately adjacent to critical District facilities such as our propane vaporizers, electrical infrastructure, and water infrastructure that, if damaged by drivers, could result in catastrophic failures and injury.
 - A buffer zone of at least 15 feet should be maintained on either side of said infrastructure or bollards should be installed to protect said infrastructure at Vail's cost.

The Kirkwood Volunteer Fire Department has the following comments:

- The proposal to reduce the access roadway width and increase traffic flow with vehicles attempting to park in some areas will create emergency vehicle access issues on Loop Road and intersections on Kirkwood Meadows Drive.
 - Vail was advised in 2020 of issues with Loop Road (attached). This plan would exacerbate the problems mentioned in this email.
 - The minimum width of the fire access lane for Loop Road shall be 26-feet clear between the parking of vehicles on the roadway. CFC 102.9/503/Appendix D.
 - The proposed access points to fire hydrants need to be revised to accommodate the width of the fire apparatus and the ability to work around the vehicle. These areas need to be a minimum of 26-feet wide and be able to accommodate the turning radius of the fire apparatus into the parking space. Where there is a parallel space the approach and departure shall be a minimum of 40-feet on each side of the fire hydrant. CFC102.9/503/Appendix D.
 - If the plan is approved, District standard bollards should be provided, at Vail's cost, around each fire hydrant on Loop Road with approved signage for No Parking Fire Access. CFC 102.9/503/Appendix D.
 - Per the RO Anderson engineer, Vail does not propose to pave the new parking stalls, nor the five-foot "pedestrian access path".
 - It is unclear how snow will be removed from the walkway, especially when cars are parked during a snow event. This will force pedestrians into the road, which would be narrowed by this project. This will cause:
 - Issues for emergency vehicle access.
 - Pedestrian safety.

Until the aforementioned concerns are addressed, the District and Fire Department object to this project as presently submitted.

Regards,



Erik M Christeson, P.E.
General Manager, KMPUD



Rick Ansel
Chief, KVFD

Erik Christeson

From: Rick Ansel
Sent: Thursday, January 02, 2020 12:38 PM
To: Brian "Biggs" Bigley (BBigley@Vailresorts.com)
Cc: Caroline Miller; Ricky Newberry (fnewberry@vailresorts.com)
Subject: Loop Road Traffic / Parking Emergency Access Concerns
Attachments: Loop North 1.2.20.jpg; Loop South 1.2.19.jpg; Loop Rd Traffic Hazard 122319 4.jpg; Loop Rd Traffic Hazard 122319.jpg

Brain,

FYI - It was reported to me there was almost a head on accident on Loop Road on Monday December 23rd due to Vail Parking Staff redirecting the normal two way traffic pattern on Loop road, to one way only at the end of the day. This resulted in guests traveling in the opposed lane on Loop Road. (please see photos attached). For public safety, please let your parking staff know to monitor this problem to hopefully help prevent vehicle head-on accidents in the future. Also, please let your staff know that the District will still need to access to our facilities with vehicles and equipment, and our access should not be impeded by parking staff.

Also, today I noticed the public self-parking head-in (not parallel) on the Loop Road next to the cat crossing and Vail employees parking head-in near the Renwick A building. This style of parking in both areas are now creating new, one lane travel traffic pinch points which inhibits the Fire Department ability travel freely during emergencies and will impact the District's ability to receive propane deliveries. This problem needs to be addressed quickly and not become the new norm for parking on Loop road.

I would be happy to support you if you would like to post, "No Parking Fire Lane" signs to help prevent the problem of public self-parking on Loop Road (or anywhere in Kirkwood) to ensure there is two-way travel on the roads.

Please call me if you have any questions and thank you for looking into this for me.

Rick Ansel
Assistant General Manager and
Kirkwood Meadows Public Utility District
Office (209) 258-4444 Ext. 103
Cell (775) 781-2505







