

Lake Tahoe Basin Stormwater Quality Improvement Committee Charter 2025 Update

Background

The Lake Tahoe Basin Executives (TIE) established an Executive Soil Erosion Control working group to manage soil erosion projects identified in the Environmental Improvement Program (EIP) aimed at improving Lake Tahoe's water quality and clarity. This working group accomplished the following:

- **Identified challenges** in designing, permitting and implementing water quality improvement projects.
- **Prioritized improvements** in the design, delivery, and effectiveness of these projects.
- **Recommended creating the Stormwater Quality Improvement Committee (SWQIC)** consisting of high-level officials from county, state, and federal agencies involved in stormwater regulation, funding, and implementation to facilitate the design, delivery and effectiveness of stormwater quality improvement efforts to achieve the Lake Tahoe clarity goals.
- **First SWQIC Charter** in 2002.

SWQIC priorities have evolved over the years as needs have changed. The original charter was rechartered in 2004, 2007, 2013, and 2018 to reflect changing priorities.

- **Early Focus (early 2000s):** SWQIC initially aimed to coordinate agencies for efficient project implementation and establish standard methods for hydrologic modeling. Grant funding historically required projects to achieve a specific sediment reduction rate, with the RUSLE model used to justify erosion control efforts.
- **Shifting Priorities:** Over time, the understanding of water quality processes improved, leading to a greater emphasis on stormwater volume reduction and treatment, rather than just erosion control.
- **Current Standards:** The Lake Tahoe Total Maximum Daily Load (TMDL) and its associated tools are now the basis for calculating load reductions under the Lake Clarity Crediting Program. The Pollutant Load Reduction Model (PLRM) has replaced the RUSLE, and source control inspections using Road RAM are utilized to generate credits for activities like street sweeping.

SWQIC is used to build consensus on the approach used in the following:

- Planning of stormwater quality improvement projects.
- The process used in developing and reviewing projects by implementing, funding, and regulatory agencies.
- Developing strategic tools used for project planning and delivery.
- Resolving ancillary design issues and procedural improvements affecting project implementation.
- Coordinating efforts for urban stormwater compliance with regulatory requirements.
- Refining stormwater management, tracking, and reporting tools.
- Coordinating implementation and providing input on policy decisions for parcel

scale Best Management Practices (BMP) and the BMP retrofit program.

- Coordinating project prioritization efforts and report to the TIE steering committee for the purposes and needs of fulfilling obligations for the Lake Tahoe Restoration Act.
- Coordinating efforts in defining/refining stormwater program priorities, including the identification of long term funding sources/strategies in support of the programs.

2025 Recharter

Like previous recharters, this recharter is designed to focus on the current economic climate, funding needs and opportunities, agency coordination for TMDL tools, tracking and reporting, and innovations in science and technology to support programmatic goals. 2025 recharter activities include:

Funding

- Identify and list current implementable projects with immediate funding needs
- Identify and coordinate funding opportunities
- Update EIP list and coordinate with TIE for Lake Tahoe Restoration Act (LTRA) funding
- Prioritize projects based on funding constraints and opportunities as needed

Tools Updates and Upgrades

- Update Pollutant Load Reduction Model (PLRM) to align with current computer operating platforms
- Upgrade the PLRM to reflect accumulated knowledge from years of implementation and address current modeling constraints.
- Revisit Rapid Assessment Methods (RAMs) and identify potential enhancements or substitutions

Agency Coordination

- Discuss successes and challenges with regard to the EIP and TMDL implementation
- Utilize adaptive management for programmatic improvement

Science Coordination

- Invite subject matter experts to present on emerging scientific developments and source control BMPs relevant to the TMDL.
- Disseminate new information regarding advanced stormwater treatment techniques and strategies, including innovations that enhance climate resilience.

BMPs and BMP Retrofits

- Coordinate and discuss BMP operations, maintenance, and retrofits, including parcel scale BMPs
- Coordinate and discuss area-wide treatment BMPs in lieu of parcel scale BMPs.

SWQIC Membership

It is intended that SWQIC leverage the experiences, expertise, and insight of key individuals at organizations that fund, regulate and implement stormwater quality improvement

activities. SWQIC members provide support and guidance for those managing projects at their individual agencies. Thus, individually, SWQIC members should:

- Understand the strategic implications and outcomes of initiatives being pursued through SWQIC sponsored outputs.
- Appreciate the significance of the SWQIC objectives and help balance conflicting priorities and resources while representing their agencies' interests.
- Be genuinely interested, and an active participant in the initiatives, discussions and be an advocate/supporter of the objectives being pursued.
- Check adherence of program activities and practices within the organization for standardization with the SWQIC context.
- Foster positive communication outside of the SWQIC regarding progress, guidelines and objectives.
- Report on SWQIC group progress to their respective agency executive management and/or department head in addition to their agency staff.

Agency Participation

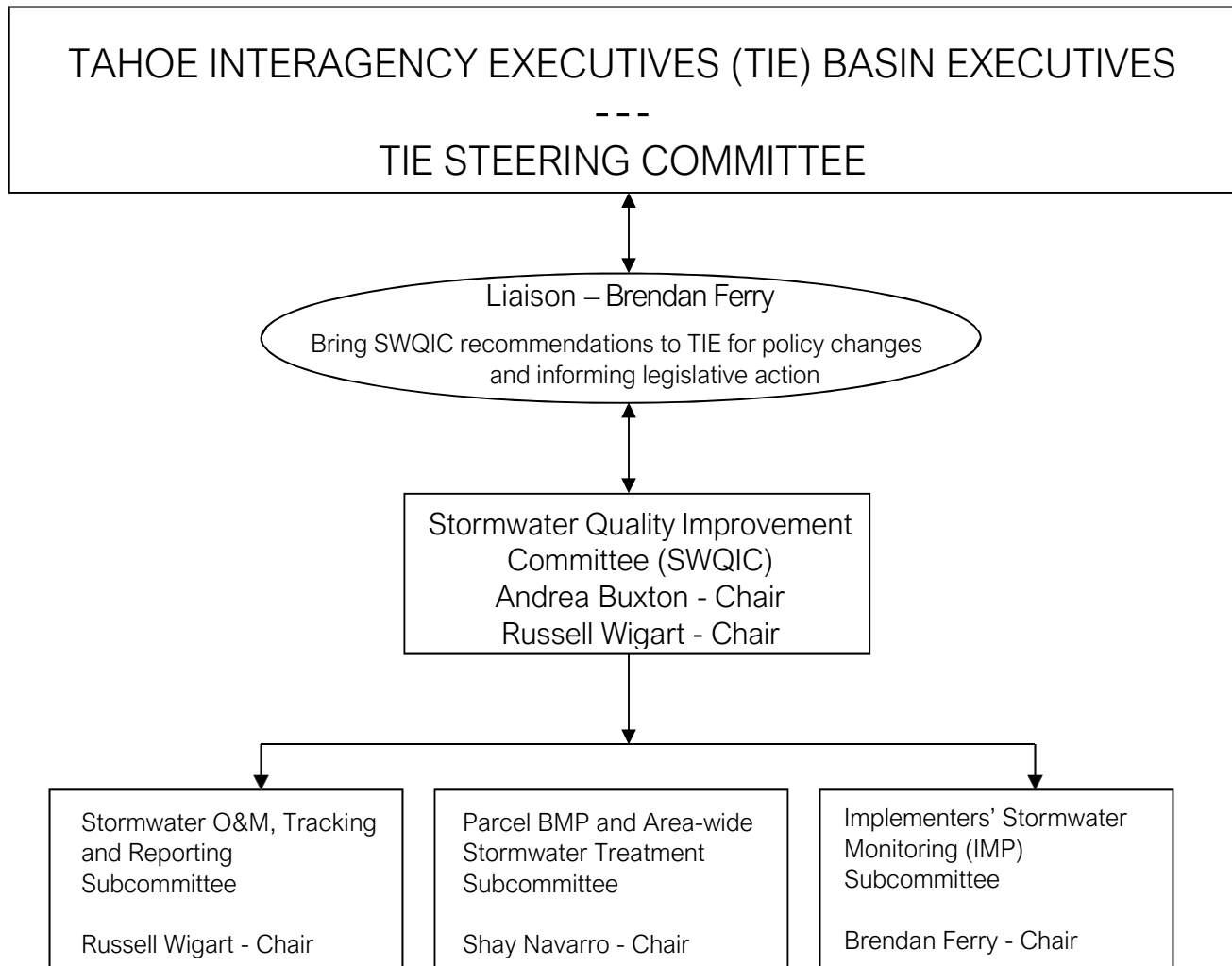
| County / City Agencies |
|--|
| City of South Lake Tahoe Public Works Department |
| County of El Dorado – Department of Transportation and Planning Division |
| County of Placer Department of Public Works – Tahoe Design Division |
| Douglas County |
| Washoe County |
| State Agencies |
| California Tahoe Conservancy |
| California Regional Water Quality Control Board - Lahontan |
| Nevada Division of State Lands – Nevada Tahoe Resource Team |
| Nevada Tahoe Conservation District |
| Nevada Division of Environmental Protection |
| State of California Department of Transportation (Caltrans) Division of Program/Project Management |
| State of Nevada Department of Transportation |
| Tahoe Regional Planning Agency |
| Tahoe Resource Conservation District |
| Federal Agencies |
| US Army Corps of Engineers |
| US Forest Service |
| US Bureau of Reclamation |
| US Environmental Protection Agency |
| US Geological Survey |

| |
|---|
| Combined |
| Tahoe Science Advisory Council (TSAC) |
| Lake Tahoe Basin Interagency Executives (TIE) Liaison |

Structure

Endorsement of the SWQIC is necessary for integration of recommendations and protocols into the current practices and procedures utilized by the individual partner agencies. Integration and uniformity, to the extent feasible and appropriate, will afford overall improvement in stormwater quality project delivery.

The proposed structure and interaction points of SWQIC are presented below. SWQIC will appoint one member as a liaison to both the TIE Basin executives as well as the TIE Steering Committee. This liaison to the TIE will present the challenges and policy recommendations for stormwater quality improvements in the Basin. These interaction points with the Lake Tahoe governing executives will assist the integration of SWQIC- endorsed protocols and recommendations. (Chair positions subject to change.)



Meetings

SWQIC will meet as required, typically monthly from October through March on the third Wednesday morning of the month.

Meeting procedures

- Leadership: Two co-chairs will be elected from the members to lead meetings.
- Protocol: Meetings will follow a modified version of *Robert's Rules of Order* for discussions, motions, and voting.
- Agenda: The meeting agenda or cancellation notice will be emailed to members by the Monday before the meeting.
- Discussion format: Co-chairs will lead discussions on common issues and timely stormwater topics. Meetings will include introductions, agenda review, previous meeting review and/or discussion of outstanding issues, subcommittee reports, presentations, open dialogue, teamwork, creative problem-solving, formal acceptance/adoption of deliverables, future anticipated plans and requests for specific assistance from SWQIC members.
- Meeting notes will be taken by read.AI, reviewed by SWQIC chairs, and summarized as meeting minutes following each meeting.

Example Meeting Agenda

- Introductions and Greetings
- Subcommittee Updates
- Agenda Items
- Round Table Discussion

Subcommittees

Following an assessment during its initial charter and recharter, SWQIC determined that utilizing subcommittees was the most optimal and efficient method to achieve its overall objectives. SWQIC secures consensus from all relevant agencies regarding the focus for each subcommittee. The following subcommittees have been established to address current priorities and may be modified as necessary.

- Stormwater Operations and Maintenance (O&M), Management, Tracking, and Reporting Subcommittee
- Parcel Best Management Practices (BMP) and Area-wide Treatment Subcommittee
- Implementers Monitoring Program (IMP) Subcommittee

Stormwater O&M, Management, Tracking, and Reporting Subcommittee

The jurisdictions are required to track and report the overall effectiveness of their respective stormwater programs. Progress has been made in developing stormwater management, tracking and reporting tools that assist the agencies with understanding the individual projects and overall Program effectiveness. The purpose of this subcommittee will be to provide advice and direction on available tracking and reporting tools in addition to the management and delivery of future projects.

The work items include, but are not limited to:

- Evaluating and making recommendations on existing reporting and tracking tools.
- Facilitating discussions to assess and recommend O & M management decisions and methodologies that result in fine sediment load reduction for all basin jurisdictions.

Parcel BMP and Area-Treatment Subcommittee

The Parcel BMP Subcommittee coordinates implementation and provides input on policy decisions for parcel scale BMPs and the BMP Retrofit Program, TRPA's 2015 BMP Action Plan provides strategic direction for the subcommittee to guide implementation of the most effective strategies for developed properties to meet TRPA's BMP requirements.

The work items include, but are not limited to:

- Facilitating discussion, share information, and report progress.
- Implementing recommended actions from TRPA's 2015 BMP Action Plan
- Focusing efforts on most effective pollutant load reduction strategies
- Targeting implementation to accelerate compliance with TRPA's BMP requirements in coordination with local jurisdiction TMDL priorities.
- Advancing area-wide treatment where feasible.
- Improving information systems and completing process improvements.

Implementers' Stormwater Monitoring Program (IMP) Subcommittee

With the adoption of the TMDL in August 2011, local California jurisdictions within the Basin are required to take measures to decrease pollutant loading from urbanized areas. The adopted Lahontan Regional Water Quality Control Board National Pollutant Discharge Elimination System (NPDES) Basin Permit and the Caltrans statewide regional permit will require jurisdictions to implement pollutant controls to decrease fine sediment particle inputs and to monitor stormwater in selected catchments to verify that load reduction requirements are being met. Similarly, the Nevada Division of Environmental Protection (NDEP) has established Interlocal Agreements (ILAs) with the Nevada Urban Stormwater Jurisdictions to implement the TMDL and to track and report progress.

The Implementers' Monitoring Program Subcommittee will work towards coordinating efforts on both the California and Nevada sides of the Basin to meet these requirements.

The work items include, but are not limited to:

- Coordinating basin-wide stormwater monitoring and reporting through the Regional Stormwater Monitoring Program (RSWMP).
- Discussing jurisdictional efforts to decrease pollutant loads from urbanized and non-urbanized areas.
- Discussing and vetting options and developing recommendations to refine and improve TMDL Program policies and tools.

Closing

This request is for TIE Basin executives to approve the recharter for the SWQIC pursuant to the discussion contained herein, for a period of five additional years.