

## Section 4.2

### Tahoe Environmental Improvement Program Individual Project Summaries



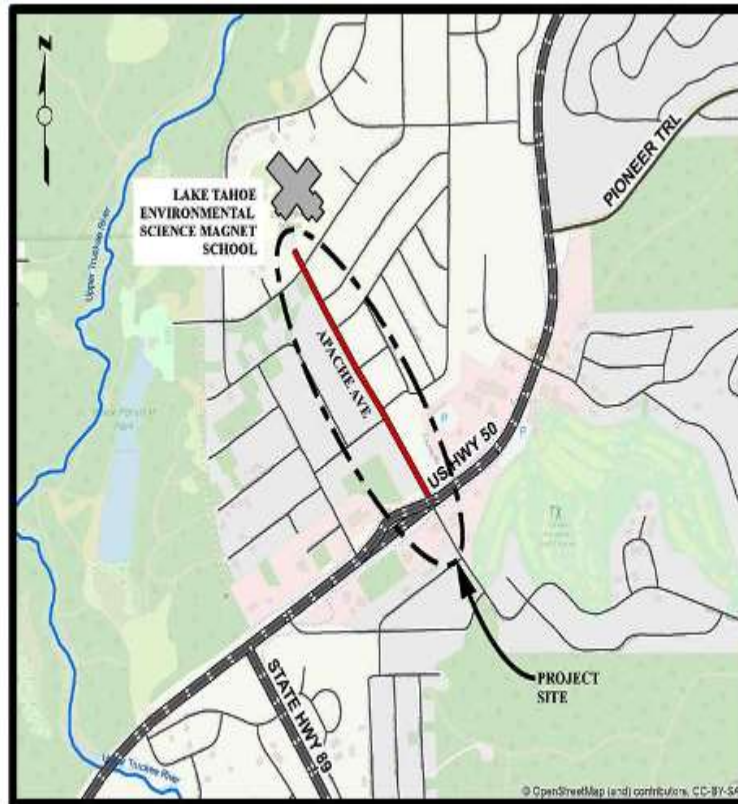
# Apache Avenue Pedestrian Safety and Connectivity Project

## CIP Project Summary

Project No: 36107021

Type: Pedestrian Way/Bike Path

Supervisor District(s) 5



### LOCATION MAP

NOT TO SCALE

### Project Description:

Apache Avenue is a major collector that serves motorists, cyclists, and pedestrians that access residences, parks, and schools. This project will reconstruct Apache Avenue from US 50 to the Lake Tahoe Environmental Science Magnet School, improve use of existing right of way by also adding class 2 bicycle lanes, a class 1 multi-use path on one side of the road and a sidewalk on the other side of the road.

Project Initiation Date: 3/6/2018



# Apache Avenue Pedestrian Safety and Connectivity Project

## Financing Plan & Tentative Schedule

Project No: 36107021

Type: Pedestrian Way/Bike Path

Supervisor District(s) 5

### All Figures in Thousands

Revenue Source	Prior FY*	FY 25/26	FY 26/27	FY 27/28	FY 28/29	FY 29/30	FY 30/31-34/35	FY 35/36-44/45	Total
Tahoe Regional Planning Agency/Mobility Mitigation	40	35							75
Congestion Mitigation and Air Quality Program (CMAQ)	646								646
RSTP Fed Funds – Caltrans LA	888								888
Carbon Reduction Program	525	20							545
Tahoe Regional Planning Agency/Water Quality	245								245
Active Transportation Program (ATP)	1,011	690							1,701
California Tahoe Conservancy (CTC)									
Road Fund	250								250
Transient Occupancy Tax (TOT)	250								250
Erosion Control Fund - Pending Reimbursement	19								19
Totals	3,875	745							4,620

### All Figures in Thousands

Expenditures	Prior FY*	FY 25/26	FY 26/27	FY 27/28	FY 28/29	FY 29/30	FY 30/31-34/35	FY 35/36-44/45	Total
Plng/Env Consultant	23								23
Plng/Env DOT Staff	136								136
Design Consultant	4								4
Developer Advanced Design									
Design DOT Staff	316								316
ROW Acquisition									
ROW Utility Relocation									
ROW Consultant									
ROW DOT Staff									
Constr Eng Consultant	61								61
Const Eng Staff	388	190							578
Construction	2,927	535							3,462
Developer Built									
Environmental Mitig. Monitor Consult.									
Environmental Mitig. Monitor Staff	20	20							40
Plant Establishment - Consultant									
Plant Establishment - Staff									
Totals	3,875	745							4,620

Schedule	Prior FY*	FY 25/26	FY 26/27	FY 27/28	FY 28/29	FY 29/30	FY 30/31-34/35	FY 35/36-44/45
Planning/Environmental								
Design								
Construction								
Environmental Monitoring								

\*Prior FY includes actual revenue and expenditures through 6/30/2024, plus amounts estimated through 6/30/2025.



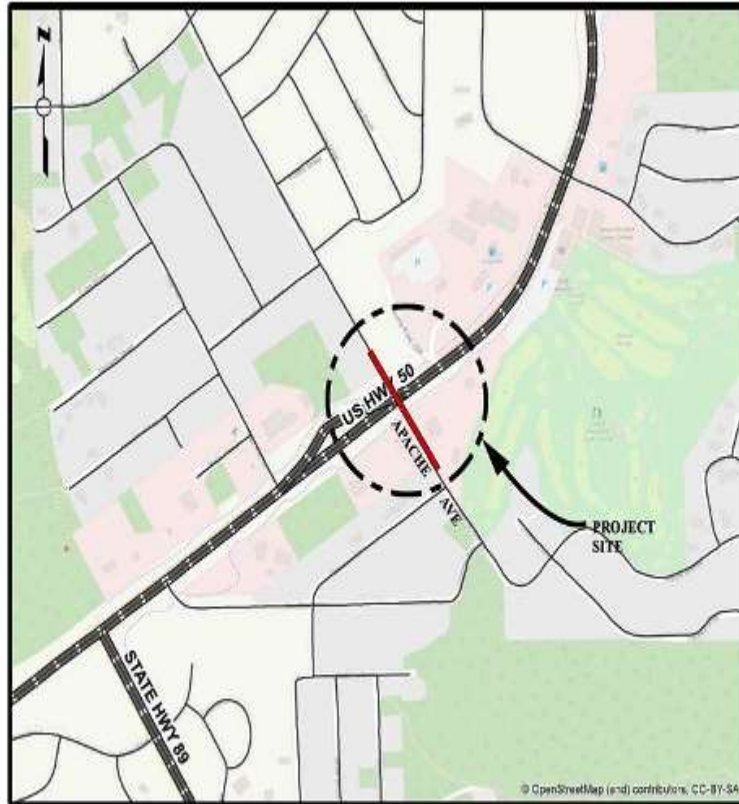
# Apache Avenue/US Highway 50 Intersection Improvement Project

## CIP Project Summary

Project No: 36104016

Type: Intersection

Supervisor District(s) 5



### LOCATION MAP

NOT TO SCALE

## Project Description:

Planning, design and construction of improvements to the existing intersection of US 50 and Apache Avenue in the community region of Meyers in the Tahoe Basin. Improvements to include either a roundabout or an upgraded intersection and enhancements to pedestrian and bicycle facilities in the vicinity of the intersection.

Project Initiation Date: 3/28/2017



# Apache Avenue/US Highway 50 Intersection Improvement Project

## Financing Plan & Tentative Schedule

Project No: 36104016

Type: Intersection

Supervisor District(s) 5

### All Figures in Thousands

Revenue Source	Prior FY*	FY 25/26	FY 26/27	FY 27/28	FY 28/29	FY 29/30	FY 30/31-34/35	FY 35/36-44/45	Total
Tahoe Regional Planning Agency/Mobility Mitigation									
Congestion Mitigation and Air Quality Program (CMAQ)									
To Be Determined		87	1,350						1,437
Totals		87	1,350						1,437

### All Figures in Thousands

Expenditures	Prior FY*	FY 25/26	FY 26/27	FY 27/28	FY 28/29	FY 29/30	FY 30/31-34/35	FY 35/36-44/45	Total
Plng/Env Consultant									
Plng/Env DOT Staff									
Design Consultant									
Developer Advanced Design									
Design DOT Staff		87							87
ROW Acquisition									
ROW Utility Relocation									
ROW Consultant									
ROW DOT Staff									
Constr Eng Consultant			150						150
Const Eng Staff			200						200
Construction			1,000						1,000
Developer Built									
Environmental Mitig. Monitor Consult.									
Environmental Mitig. Monitor Staff									
Plant Establishment - Consultant									
Plant Establishment - Staff									
Totals		87	1,350						1,437

Schedule	Prior FY*	FY 25/26	FY 26/27	FY 27/28	FY 28/29	FY 29/30	FY 30/31-34/35	FY 35/36-44/45
Design								
Construction								

\*Prior FY includes actual revenue and expenditures through 6/30/2024, plus amounts estimated through 6/30/2025.



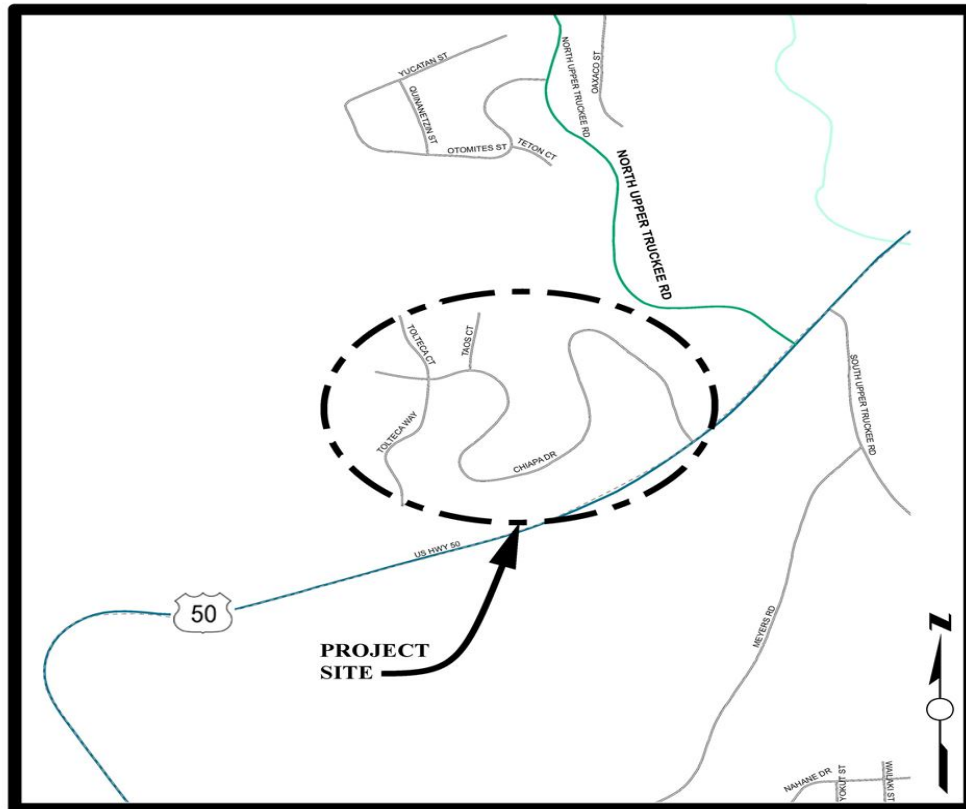
# Chiapa Erosion Control Project

## CIP Project Summary

Project No: 36107011

Type: Erosion Control - (EIP)

Supervisor District(s) 5



## LOCATION MAP

NOT TO SCALE

### Project Description:

The Chiapa Erosion Control Project encompasses the streets of Chiapa Drive, Tolteca Court and Taos Court. The main goal of the Project is to improve the clarity of Lake Tahoe by reducing the detrimental water quality impacts of Tahoe Paradise Unit No. 34 subdivision on Lake Tahoe clarity. The objective of the Project is the reduction in the transport of fine sediment from the Project area by constructing water quality Best Management Practices (BMPs) prior to reaching the Upper Truckee River to the maximum extent practicable.

Project Initiation Date: 6/23/2009



# Chiapa Erosion Control Project

## Financing Plan & Tentative Schedule

Project No: 36107011

Type: Erosion Control - (EIP)

Supervisor District(s) 5

### All Figures in Thousands

Revenue Source	Prior FY*	FY 25/26	FY 26/27	FY 27/28	FY 28/29	FY 29/30	FY 30/31-34/35	FY 35/36-44/45	Total
California Tahoe Conservancy (CTC)									
United States Forest Service (USFS)									
Tahoe Regional Planning Agency/Water Quality							45		45
To Be Determined							1,816		1,816
Totals							1,861		1,861

### All Figures in Thousands

Expenditures	Prior FY*	FY 25/26	FY 26/27	FY 27/28	FY 28/29	FY 29/30	FY 30/31-34/35	FY 35/36-44/45	Total
Plng/Env Consultant							110		110
Plng/Env DOT Staff							81		81
Design Consultant							40		40
Developer Advanced Design									
Design DOT Staff							270		270
ROW Acquisition							10		10
ROW Utility Relocation									
ROW Consultant							6		6
ROW DOT Staff							20		20
Constr Eng Consultant									
Const Eng Staff							260		260
Construction							1,000		1,000
Developer Built									
Environmental Mitig. Monitor Consult.							20		20
Environmental Mitig. Monitor Staff							20		20
Plant Establishment - Consultant							12		12
Plant Establishment - Staff							12		12
Totals							1,861		1,861

Schedule	Prior FY*	FY 25/26	FY 26/27	FY 27/28	FY 28/29	FY 29/30	FY 30/31-34/35	FY 35/36-44/45
Planning/Environmental								
Design								
Right Of Way								
Construction								
Environmental Monitoring								

\*Prior FY includes actual revenue and expenditures through 6/30/2024, plus amounts estimated through 6/30/2025.





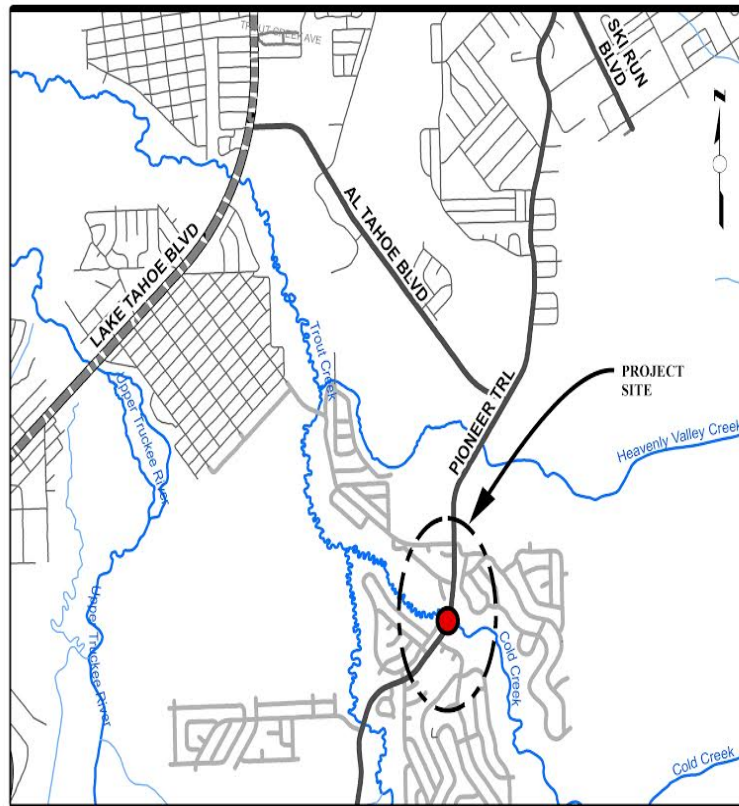
# Cold Creek Fisheries Project

## CIP Project Summary

Project No: 36107018

Type: Erosion Control - (EIP)

Supervisor District(s) 5



### LOCATION MAP

NOT TO SCALE

## Project Description:

The original Project scope was to complete a comprehensive stream corridor restoration effort which included a 1 mile reach of Cold Creek, the STPUD access road, the culvert at Pioneer Trail, and the CSLT Globin Ponds. An existing Conditions Analysis Report was completed in May of 2006 which described the majority of the problems within this corridor and opportunities and constraints for the Project alternatives. Upon TAC review of the Report and further discussions with respect to the scope of work it was decided to reduce the scope of work for the County Project to just the culvert at Pioneer Trail. Therefore, the current Project includes addressing the culvert at Pioneer Trail with respect to fish passage only. The goals of this Project are to enhance/improve fisheries and riparian habitat along a portion of Cold Creek, reduce sediment load from adjacent road and reduce sediment load from adjacent slopes.

Project Initiation Date: 1/1/2005



# Cold Creek Fisheries Project

## Financing Plan & Tentative Schedule

Project No: 36107018

Type: Erosion Control - (EIP)

Supervisor District(s) 5

### All Figures in Thousands

Revenue Source	Prior FY*	FY 25/26	FY 26/27	FY 27/28	FY 28/29	FY 29/30	FY 30/31-34/35	FY 35/36-44/45	Total
California Tahoe Conservancy (CTC)	275								275
Tahoe Regional Planning Agency/Stream Environmental Zone				206					206
To Be Determined		500	416	5,000			22		5,938
Totals	275	500	416	5,206			22		6,419

### All Figures in Thousands

Expenditures	Prior FY*	FY 25/26	FY 26/27	FY 27/28	FY 28/29	FY 29/30	FY 30/31-34/35	FY 35/36-44/45	Total
Plng/Env Consultant		250	50						300
Plng/Env DOT Staff		250							250
Design Consultant	198								198
Developer Advanced Design									
Design DOT Staff	51		300						351
ROW Acquisition									
ROW Utility Relocation									
ROW Consultant			11						11
ROW DOT Staff			55						55
Constr Eng Consultant				150					150
Const Eng Staff				500					500
Construction				4,500					4,500
Developer Built									
Environmental Mitig. Monitor Consult.	18								18
Environmental Mitig. Monitor Staff	8			28			11		47
Plant Establishment - Consultant									
Plant Establishment - Staff				28			11		39
Totals	275	500	416	5,206			22		6,419

Schedule	Prior FY*	FY 25/26	FY 26/27	FY 27/28	FY 28/29	FY 29/30	FY 30/31-34/35	FY 35/36-44/45
Planning/Environmental								
Design								
Right Of Way								
Construction								
Environmental Monitoring								

\*Prior FY includes actual revenue and expenditures through 6/30/2024, plus amounts estimated through 6/30/2025.



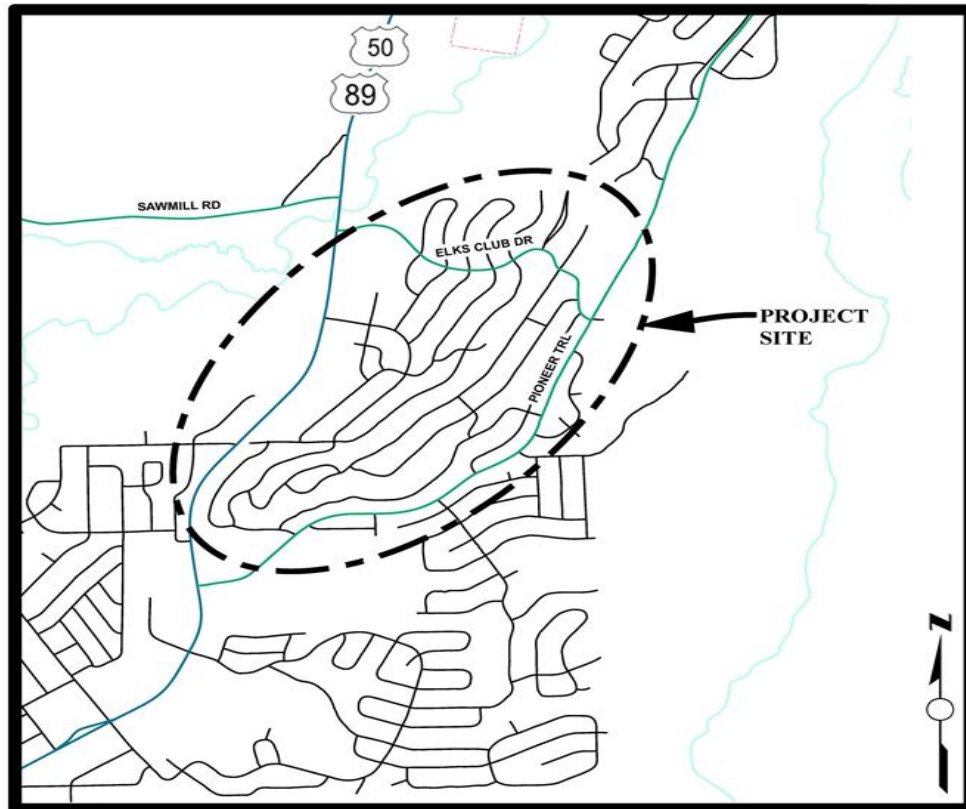
# Country Club Heights Erosion Control Project

## CIP Project Summary

Project No: 36107009

Type: Erosion Control - (EIP)

Supervisor District(s) 5



## LOCATION MAP

NOT TO SCALE

### Project Description:

The Country Club Heights Erosion Control Project is within the Country Club Heights subdivision (Units 1-5), more specifically between Crystal Air Drive at the upper southerly boundary to U.S. Highway 50 to the north and Thunderbird Drive at the upper westerly boundary to the Upper Truckee River to the west. The main goal of this Project is to reduce very fine/fine sediment from the County right-of-way from reaching the Upper Truckee River near Elks Club Road to the Total Maximum Daily Level (TMDL) set by Lahontan Regional Water Quality Control Board under the National Pollution Discharge Elimination System (NPDES) permit conditions.

Project Initiation Date: 7/1/2011



# Country Club Heights Erosion Control Project

## Financing Plan & Tentative Schedule

Project No: 36107009

Type: Erosion Control - (EIP)

Supervisor District(s) 5

### All Figures in Thousands

Revenue Source	Prior FY*	FY 25/26	FY 26/27	FY 27/28	FY 28/29	FY 29/30	FY 30/31-34/35	FY 35/36-44/45	Total
Erosion Control Fund									
Tahoe Regional Planning Agency/Water Quality	104	5							109
Tahoe Regional Planning Agency/Stream Environmental Zone	73								73
California Tahoe Conservancy (CTC)	841								841
United States Forest Service (USFS)	1,531								1,531
Totals	2,549	5							2,554

### All Figures in Thousands

Expenditures	Prior FY*	FY 25/26	FY 26/27	FY 27/28	FY 28/29	FY 29/30	FY 30/31-34/35	FY 35/36-44/45	Total
Plng/Env Consultant	225								225
Plng/Env DOT Staff	194								194
Design Consultant	5								5
Developer Advanced Design									
Design DOT Staff	329								329
ROW Acquisition									
ROW Utility Relocation									
ROW Consultant									
ROW DOT Staff									
Constr Eng Consultant	42								42
Const Eng Staff	269								269
Construction	1,383								1,383
Developer Built									
Environmental Mitig. Monitor Consult.									
Environmental Mitig. Monitor Staff	27	5							32
Plant Establishment - Consultant	9								9
Plant Establishment - Staff	66								66
Totals	2,549	5							2,554

Schedule	Prior FY*	FY 25/26	FY 26/27	FY 27/28	FY 28/29	FY 29/30	FY 30/31-34/35	FY 35/36-44/45
Planning/Environmental								
Design								
Right Of Way								
Construction								
Environmental Monitoring								

\*Prior FY includes actual revenue and expenditures through 6/30/2024, plus amounts estimated through 6/30/2025.



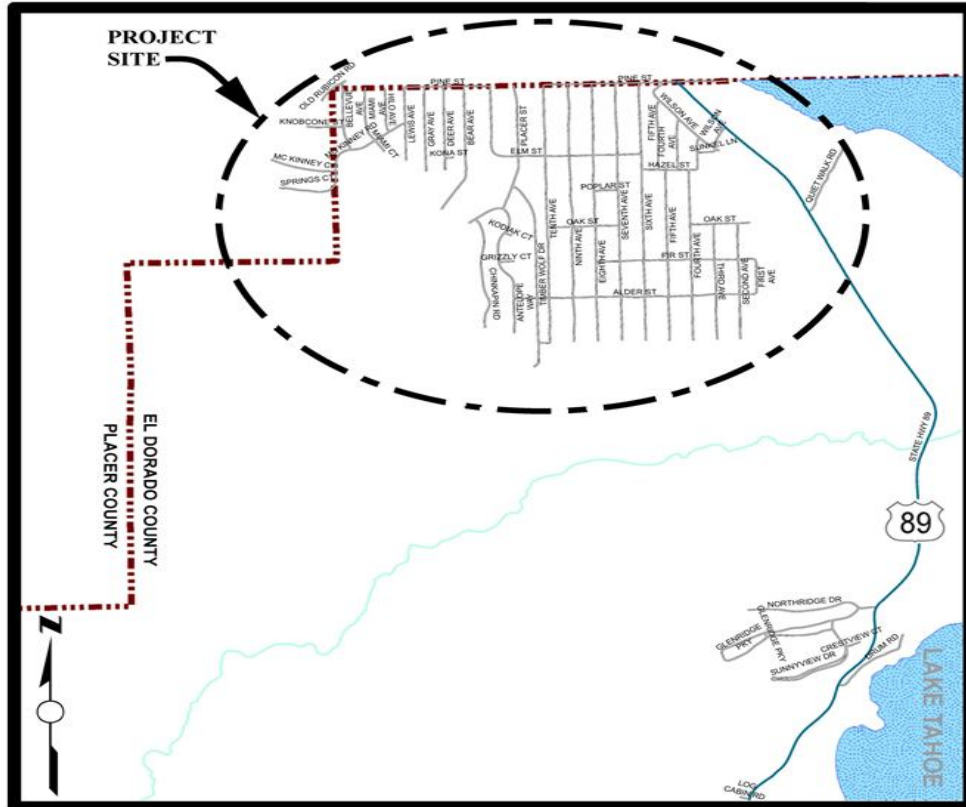
# County Service Area (CSA) #5 Erosion Control Project

## CIP Project Summary

Project No: 36107003

Type: Erosion Control - (EIP)

Supervisor District(s) 5



## LOCATION MAP

NOT TO SCALE

### Project Description:

This project is located in the far northeasterly corner of El Dorado County in Tahoma. The goal of the project is to improve the clarity of Lake Tahoe by reducing the detrimental water quality impacts of the CSA 5 subdivision in Tahoma by replacing existing drainage infrastructure with modern components that allow sediment to drop out of the drainage systems before being conveyed into Lake Tahoe.

Project Initiation Date: 10/26/1998



# County Service Area (CSA) #5 Erosion Control Project

## Financing Plan & Tentative Schedule

Project No: 36107003

Type: Erosion Control - (EIP)

Supervisor District(s) 5

### All Figures in Thousands

Revenue Source	Prior FY*	FY 25/26	FY 26/27	FY 27/28	FY 28/29	FY 29/30	FY 30/31-34/35	FY 35/36-44/45	Total
Tahoe Regional Planning Agency/Water Quality	69	70	25						164
South Tahoe Public Utility District (STPUD)	75								75
United States Forest Service (USFS)	1,044	250							1,294
County Service Area (CSA 5)	400	100							500
California Tahoe Conservancy (CTC)									
Totals	1,588	420	25						2,033

### All Figures in Thousands

Expenditures	Prior FY*	FY 25/26	FY 26/27	FY 27/28	FY 28/29	FY 29/30	FY 30/31-34/35	FY 35/36-44/45	Total
Plng/Env Consultant	75								75
Plng/Env DOT Staff	219								219
Design Consultant	1								1
Developer Advanced Design									
Design DOT Staff	372								372
ROW Acquisition									
ROW Utility Relocation									
ROW Consultant									
ROW DOT Staff	4								4
Constr Eng Consultant	2								2
Const Eng Staff	138	55							193
Construction	740	325							1,065
Developer Built									
Environmental Mitig. Monitor Consult.	1								1
Environmental Mitig. Monitor Staff	24	15	10						49
Plant Establishment - Consultant	5	15	5						25
Plant Establishment - Staff	5	10	10						25
Totals	1,588	420	25						2,033

Schedule	Prior FY*	FY 25/26	FY 26/27	FY 27/28	FY 28/29	FY 29/30	FY 30/31-34/35	FY 35/36-44/45
Planning/Environmental								
Design								
Right Of Way								
Construction								
Environmental Monitoring								

\*Prior FY includes actual revenue and expenditures through 6/30/2024, plus amounts estimated through 6/30/2025.





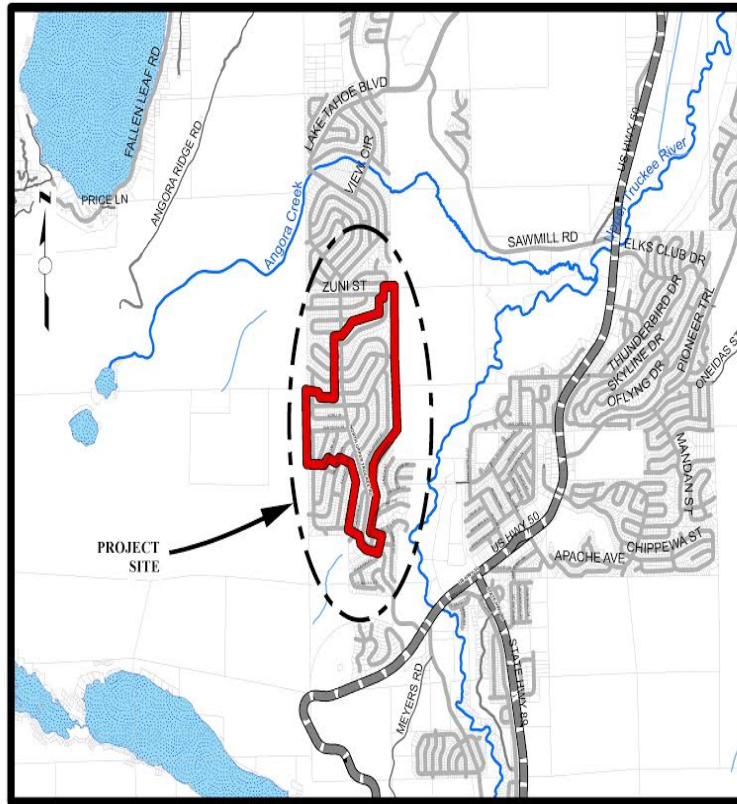
# Delaware Water Quality Project

## CIP Project Summary

Project No: 36107019

Type: Erosion Control - (EIP)

Supervisor District(s) 5



### LOCATION MAP

NOT TO SCALE

## Project Description:

This Project encompasses the Tahoe Paradise Units No. 20, 22, 23, and 24 subdivisions, which includes Delaware Street, Kiowa Drive, and Kickapoo Street. The primary goal of the Project is to improve the clarity of Lake Tahoe by reducing detrimental water quality impacts that are a result of the development of Tahoe Paradise Units No. 20, 22, 23, and 24. The objective of the Project is the reduction of the transport of fine sediment from the Project area to the Upper Truckee River by construction water quality Best Management Practices.

Project Initiation Date: 2/9/2017



# Delaware Water Quality Project

## Financing Plan & Tentative Schedule

Project No: 36107019

Type: Erosion Control - (EIP)

Supervisor District(s) 5

### All Figures in Thousands

Revenue Source	Prior FY*	FY 25/26	FY 26/27	FY 27/28	FY 28/29	FY 29/30	FY 30/31-34/35	FY 35/36-44/45	Total
Tahoe Regional Planning Agency/Water Quality			5	4			21		29
To Be Determined			235	480			7		722
Totals			240	483			28		751

### All Figures in Thousands

Expenditures	Prior FY*	FY 25/26	FY 26/27	FY 27/28	FY 28/29	FY 29/30	FY 30/31-34/35	FY 35/36-44/45	Total
Plng/Env Consultant			35						35
Plng/Env DOT Staff			50						50
Design Consultant									
Developer Advanced Design									
Design DOT Staff			150						150
ROW Acquisition									
ROW Utility Relocation									
ROW Consultant									
ROW DOT Staff									
Constr Eng Consultant				3					3
Const Eng Staff			5	70			10		85
Construction				400					400
Developer Built									
Environmental Mitig. Monitor Consult.				2			2		4
Environmental Mitig. Monitor Staff				5			10		15
Plant Establishment - Consultant				1			1		2
Plant Establishment - Staff				3			5		8
Totals			240	483			28		751

Schedule	Prior FY*	FY 25/26	FY 26/27	FY 27/28	FY 28/29	FY 29/30	FY 30/31-34/35	FY 35/36-44/45
Planning/Environmental								
Design								
Construction								
Environmental Monitoring								

\*Prior FY includes actual revenue and expenditures through 6/30/2024, plus amounts estimated through 6/30/2025.





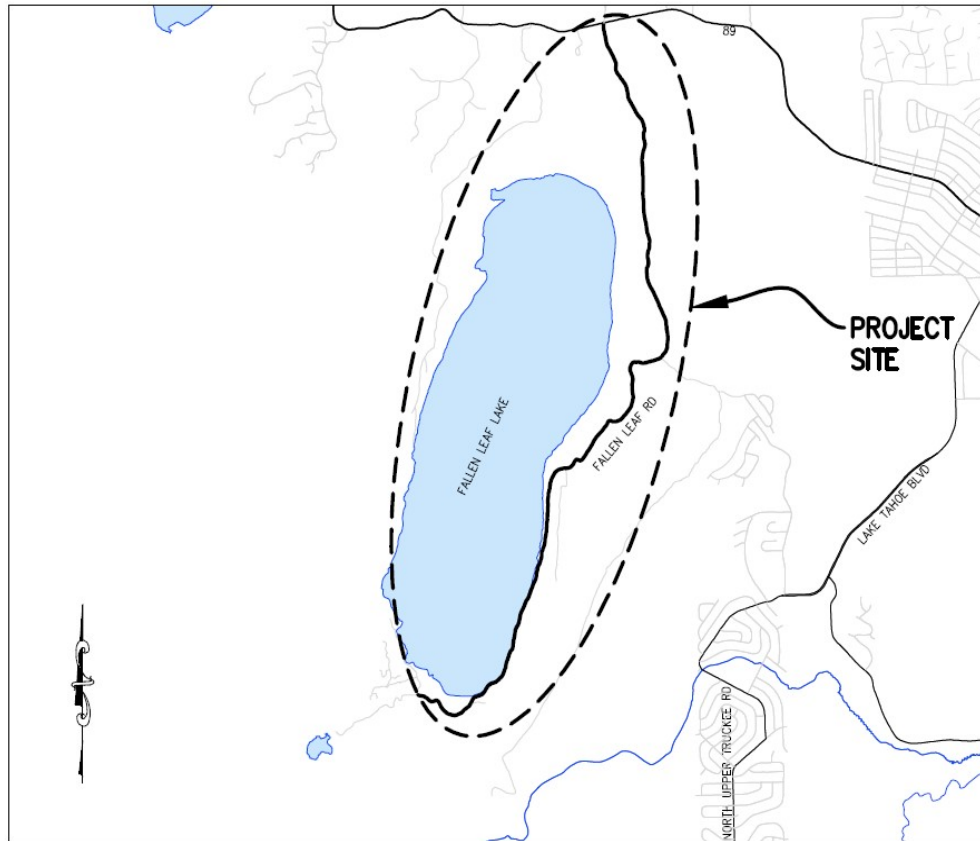
# Fallen Leaf Road Pavement Rehabilitation Project

## CIP Project Summary

Project No: 36105077

Type: Roadway

Supervisor District(s) 5



### LOCATION MAP

NOT TO SCALE

## Project Description:

Fallen Leaf Road is 4.9 miles long and extends from SR 89 to the southern end of Fallen Leaf Lake at Stanford Sierra Camp. The proposed project is to complete roadway improvements along the entire 4.9 mile length of Fallen Leaf Road from SR 89 to Glen Alpine Creek. The project may be broken into phases pending approval of future grant funds.

Project Initiation Date: 3/1/2022



# Fallen Leaf Road Pavement Rehabilitation Project

## Financing Plan & Tentative Schedule

Project No: 36105077

Type: Roadway

Supervisor District(s) 5

### All Figures in Thousands

Revenue Source	Prior FY*	FY 25/26	FY 26/27	FY 27/28	FY 28/29	FY 29/30	FY 30/31-34/35	FY 35/36-44/45	Total
Road Fund						375			375
To Be Determined					500	4,500			5,000
General Fund				400		1,250			1,650
Federal Lands Access Program (FLAP)									
Totals				400	500	6,125			7,025

### All Figures in Thousands

Expenditures	Prior FY*	FY 25/26	FY 26/27	FY 27/28	FY 28/29	FY 29/30	FY 30/31-34/35	FY 35/36-44/45	Total
Plng/Env Consultant				150					150
Plng/Env DOT Staff				250					250
Design Consultant									
Developer Advanced Design									
Design DOT Staff					400				400
ROW Acquisition									
ROW Utility Relocation									
ROW Consultant					100				100
ROW DOT Staff									
Constr Eng Consultant						20			20
Const Eng Staff						420			420
Construction						5,650			5,650
Developer Built									
Environmental Mitig. Monitor Consult.						5			5
Environmental Mitig. Monitor Staff						10			10
Plant Establishment - Consultant						10			10
Plant Establishment - Staff						10			10
Totals				400	500	6,125			7,025

Schedule	Prior FY*	FY 25/26	FY 26/27	FY 27/28	FY 28/29	FY 29/30	FY 30/31-34/35	FY 35/36-44/45
Planning/Environmental								
Design								
Right Of Way								
Construction								
Environmental Monitoring								

\*Prior FY includes actual revenue and expenditures through 6/30/2024, plus amounts estimated through 6/30/2025.



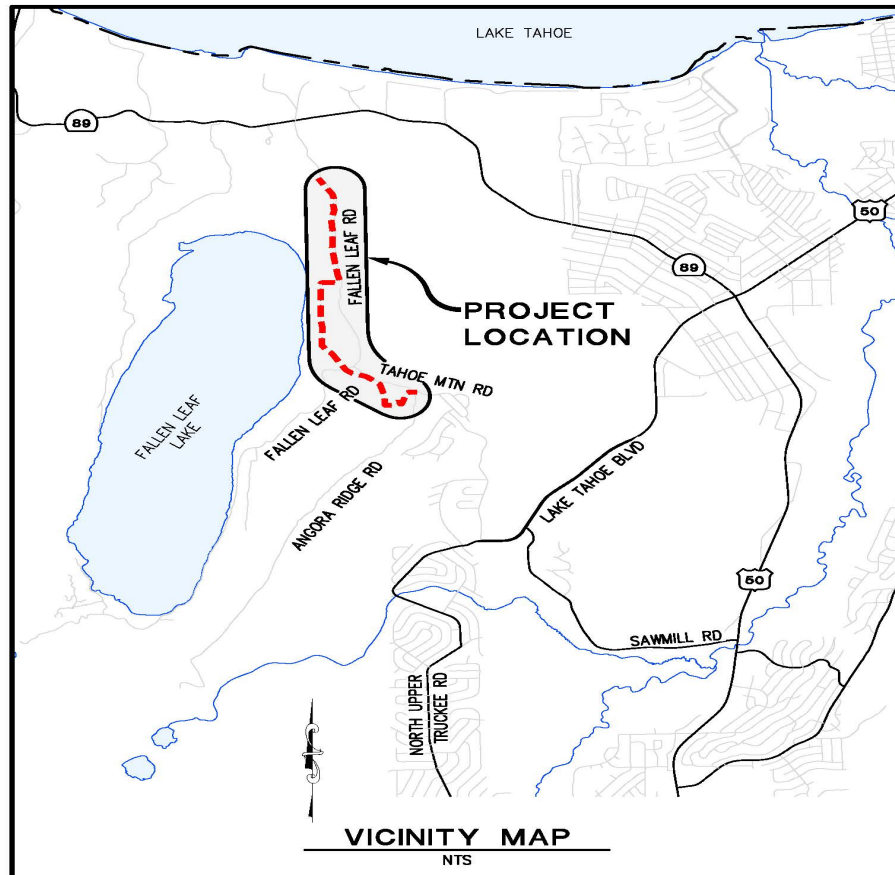
# Fallen Leaf Road Recreational Access Project

## CIP Project Summary

Project No: 36105050

Type: Roadway

Supervisor District(s) 5



### Project Description:

The Fallen Leaf Road Recreational Access Project will minimize pedestrian, bicyclists, and vehicle conflicts that occur on Fallen Leaf Road between the Fallen Leaf campground and Tahoe Mountain Road. The proposed project will include construction of approximately 2.2 miles of shared-use path with paved trailhead parking at either end of the path. The project would start at Fallen Leaf Campground and end near the intersection of Tahoe Mountain Road and Angora Ridge Road.

Project Initiation Date: 3/6/2018



# Fallen Leaf Road Recreational Access Project

## Financing Plan & Tentative Schedule

Project No: 36105050

Type: Roadway

Supervisor District(s) 5

### All Figures in Thousands

Revenue Source	Prior FY*	FY 25/26	FY 26/27	FY 27/28	FY 28/29	FY 29/30	FY 30/31-34/35	FY 35/36-44/45	Total
Tahoe Regional Planning Agency/Mobility Mitigation	7	3		17	20	20			67
Federal Lands Access Program (FLAP)									
To Be Determined				173	220	1,298	1,190		2,881
RSTP Exchange Funds-TRPA	7								7
Totals	14	3		190	240	1,318	1,190		2,955

### All Figures in Thousands

Expenditures	Prior FY*	FY 25/26	FY 26/27	FY 27/28	FY 28/29	FY 29/30	FY 30/31-34/35	FY 35/36-44/45	Total
Plng/Env Consultant				50					50
Plng/Env DOT Staff	14	3		140					157
Design Consultant						55			55
Developer Advanced Design									
Design DOT Staff					200	55			255
ROW Acquisition									
ROW Utility Relocation									
ROW Consultant									
ROW DOT Staff					40				40
Constr Eng Consultant						23			23
Const Eng Staff						185	100		285
Construction						1,000	1,000		2,000
Developer Built									
Environmental Mitig. Monitor Consult.							22		22
Environmental Mitig. Monitor Staff							22		22
Plant Establishment - Consultant							23		23
Plant Establishment - Staff							23		23
Totals	14	3		190	240	1,318	1,190		2,955

Schedule	Prior FY*	FY 25/26	FY 26/27	FY 27/28	FY 28/29	FY 29/30	FY 30/31-34/35	FY 35/36-44/45
Planning/Environmental								
Design								
Right Of Way								
Construction								
Environmental Monitoring								

\*Prior FY includes actual revenue and expenditures through 6/30/2024, plus amounts estimated through 6/30/2025.



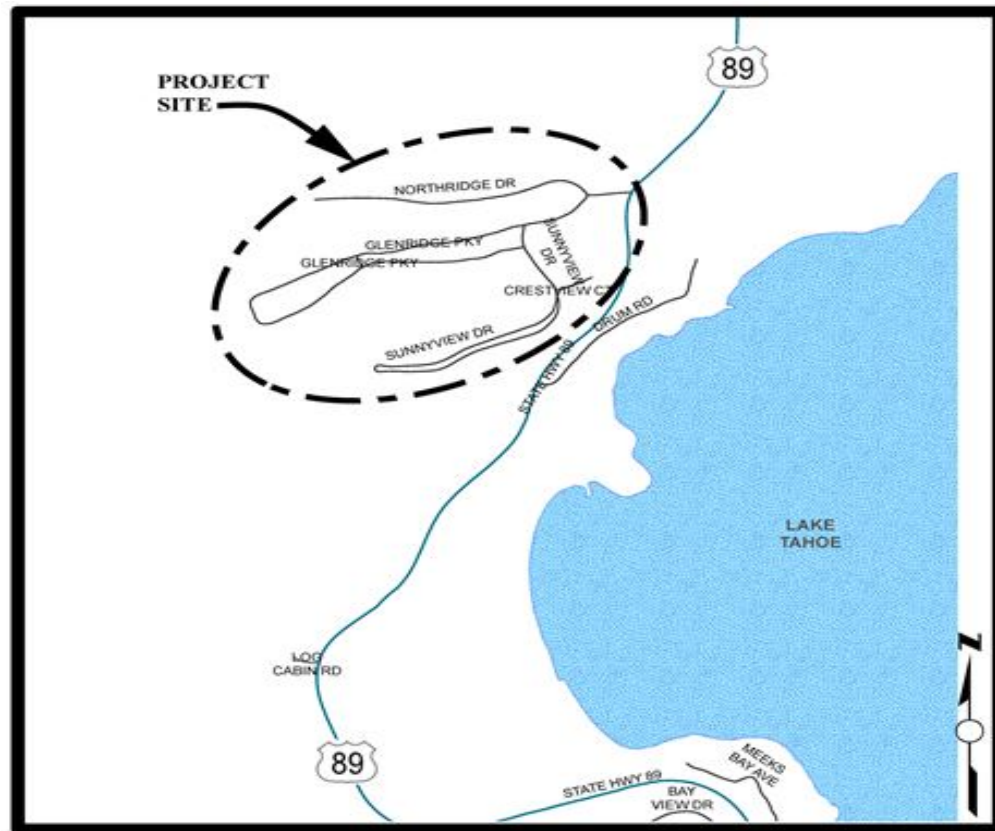
# Glenridge Erosion Control Project

## CIP Project Summary

Project No: 36107014

Type: Erosion Control - (EIP)

Supervisor District(s) 5



## LOCATION MAP

NOT TO SCALE

### Project Description:

The Glenridge Erosion Control Project is bounded by the Northridge Drive to the north, forested lands to the west, State Route 89 to the east and Sunnyview Drive to the south. The main goal of the Project is to improve the clarity of Lake Tahoe by reducing the detrimental water quality impacts of the Glenridge Park Unit No. 1 subdivision on Lake Tahoe clarity. The objective of the Project is the reduction in the transport of fine sediment from the Project area by constructing water quality Best Management Practices (BMPs) prior to reaching Lake Tahoe to the maximum extent practicable.

Project Initiation Date: 6/23/2009



# Glenridge Erosion Control Project

## Financing Plan & Tentative Schedule

Project No: 36107014

Type: Erosion Control - (EIP)

Supervisor District(s) 5

### All Figures in Thousands

Revenue Source	Prior FY*	FY 25/26	FY 26/27	FY 27/28	FY 28/29	FY 29/30	FY 30/31-34/35	FY 35/36-44/45	Total
Tahoe Regional Planning Agency/Water Quality							51		51
United States Forest Service (USFS)									
To Be Determined			170				1,512		1,682
Totals			170				1,563		1,733

### All Figures in Thousands

Expenditures	Prior FY*	FY 25/26	FY 26/27	FY 27/28	FY 28/29	FY 29/30	FY 30/31-34/35	FY 35/36-44/45	Total
Plng/Env Consultant			75						75
Plng/Env DOT Staff			45						45
Design Consultant									
Developer Advanced Design									
Design DOT Staff			50				150		200
ROW Acquisition							6		6
ROW Utility Relocation									
ROW Consultant							4		4
ROW DOT Staff							13		13
Constr Eng Consultant							40		40
Const Eng Staff							200		200
Construction							1,000		1,000
Developer Built									
Environmental Mitig. Monitor Consult.							10		10
Environmental Mitig. Monitor Staff							10		10
Plant Establishment - Consultant							13		13
Plant Establishment - Staff							118		118
Totals			170				1,563		1,733

Schedule	Prior FY*	FY 25/26	FY 26/27	FY 27/28	FY 28/29	FY 29/30	FY 30/31-34/35	FY 35/36-44/45
Planning/Environmental								
Design								
Right Of Way								
Construction								
Environmental Monitoring								

\*Prior FY includes actual revenue and expenditures through 6/30/2024, plus amounts estimated through 6/30/2025.



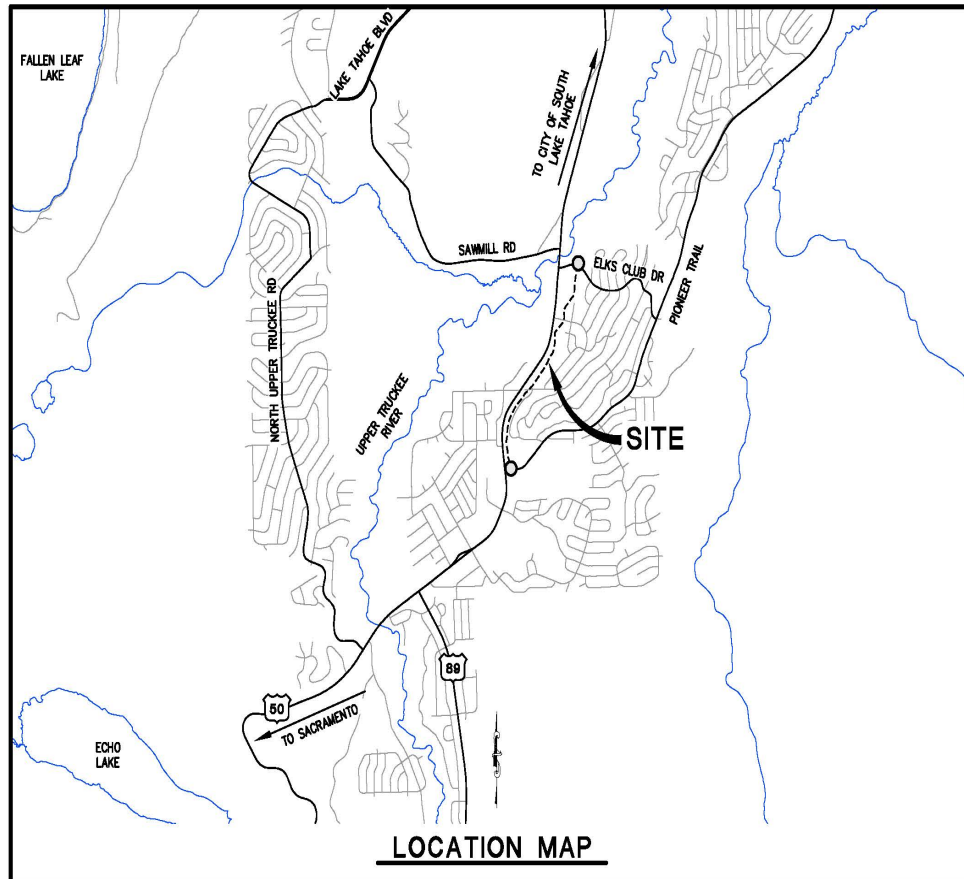
# Greenway Shared Use Path - Meyers to Elks Club Drive

## CIP Project Summary

Project No: 36107024

Type: Parks & Trails

Supervisor District(s) 5



### Project Description:

The Meyers Bikeway Connector Project (Project) will implement shared use accessibility improvements to the community of Meyers between the intersection of US 50 with Pioneer Trail and Elks Club Drive. The proposed shared use path extension will connect residents in the County Club Heights neighborhood with the Community of Meyers.

Project Initiation Date: 1/1/2026



# Greenway Shared Use Path - Meyers to Elks Club Drive

## Financing Plan & Tentative Schedule

Project No: 36107024

Type: Parks & Trails

Supervisor District(s) 5

### All Figures in Thousands

Revenue Source	Prior FY*	FY 25/26	FY 26/27	FY 27/28	FY 28/29	FY 29/30	FY 30/31-34/35	FY 35/36-44/45	Total
To Be Determined		200	550	3,016					3,766
Totals		200	550	3,016					3,766

### All Figures in Thousands

Expenditures	Prior FY*	FY 25/26	FY 26/27	FY 27/28	FY 28/29	FY 29/30	FY 30/31-34/35	FY 35/36-44/45	Total
Plng/Env Consultant									
Plng/Env DOT Staff		200	250						450
Design Consultant									
Developer Advanced Design									
Design DOT Staff			300	200					500
ROW Acquisition									
ROW Utility Relocation									
ROW Consultant									
ROW DOT Staff									
Constr Eng Consultant				265					265
Const Eng Staff									
Construction				2,551					2,551
Developer Built									
Environmental Mitig. Monitor Consult.									
Environmental Mitig. Monitor Staff									
Plant Establishment - Consultant									
Plant Establishment - Staff									
Totals		200	550	3,016					3,766

Schedule	Prior FY*	FY 25/26	FY 26/27	FY 27/28	FY 28/29	FY 29/30	FY 30/31-34/35	FY 35/36-44/45
Planning/Environmental								
Design								
Construction								

\*Prior FY includes actual revenue and expenditures through 6/30/2024, plus amounts estimated through 6/30/2025.





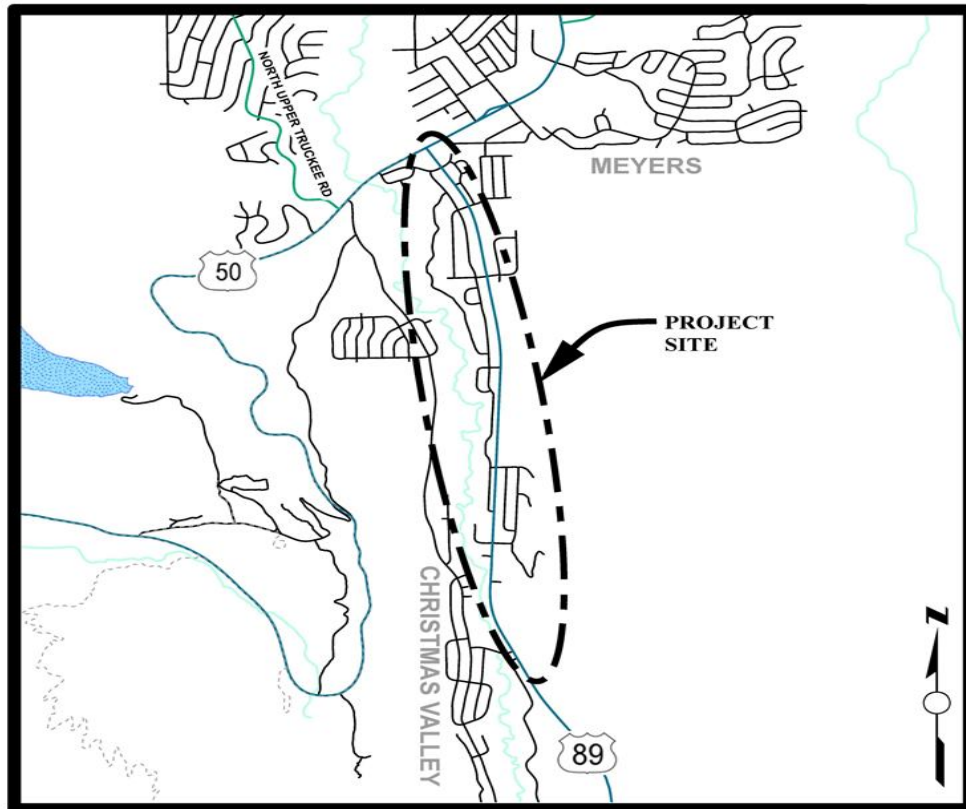
# Highway 89 Class I Bike Path Project

## CIP Project Summary

Project No: 36107010

Type: Pedestrian Way/Bike Path

Supervisor District(s) 5



## LOCATION MAP

NOT TO SCALE

### Project Description:

The Class I bikeway along State Route 89 from Portal Road to US Highway 50 in Christmas Valley is intended to improve the regional bicycle path network by providing a critical link through the Christmas Valley area. The purpose of the project is to provide access to local businesses, schools, and offices for bicyclists and pedestrians, to reduce vehicular transportation, and to enhance recreational opportunities within the Lake Tahoe Basin. This bicycle facility will connect to the existing Pat Lowe Memorial Bike Path in community of Meyers.

Project Initiation Date: 2/13/2007



# Highway 89 Class I Bike Path Project

## Financing Plan & Tentative Schedule

Project No: 36107010

Type: Pedestrian Way/Bike Path

Supervisor District(s) 5

### All Figures in Thousands

Revenue Source	Prior FY*	FY 25/26	FY 26/27	FY 27/28	FY 28/29	FY 29/30	FY 30/31-34/35	FY 35/36-44/45	Total
To Be Determined							1,670		1,670
Tahoe Regional Planning Agency/Mobility Mitigation							441		441
Totals							2,110		2,110

### All Figures in Thousands

Expenditures	Prior FY*	FY 25/26	FY 26/27	FY 27/28	FY 28/29	FY 29/30	FY 30/31-34/35	FY 35/36-44/45	Total
Plng/Env Consultant							25		25
Plng/Env DOT Staff							77		77
Design Consultant									
Developer Advanced Design									
Design DOT Staff							175		175
ROW Acquisition									
ROW Utility Relocation									
ROW Consultant									
ROW DOT Staff									
Constr Eng Consultant							7		7
Const Eng Staff							372		372
Construction							1,420		1,420
Developer Built									
Environmental Mitig. Monitor Consult.									
Environmental Mitig. Monitor Staff							10		10
Plant Establishment - Consultant							1		1
Plant Establishment - Staff							24		24
Totals							2,110		2,110

Schedule	Prior FY*	FY 25/26	FY 26/27	FY 27/28	FY 28/29	FY 29/30	FY 30/31-34/35	FY 35/36-44/45
Planning/Environmental								
Design								
Construction								
Environmental Monitoring								

\*Prior FY includes actual revenue and expenditures through 6/30/2024, plus amounts estimated through 6/30/2025.



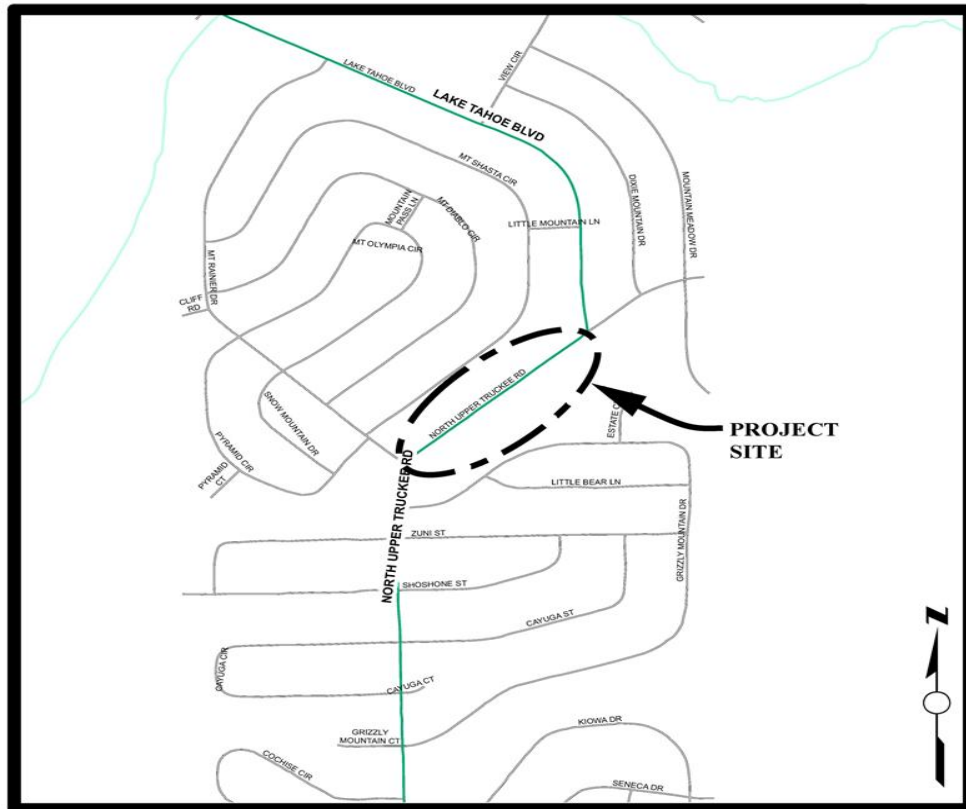
# North Upper Truckee SEZ Restoration Project

## CIP Project Summary

Project No: 36107012

Type: Erosion Control - (EIP)

Supervisor District(s) 5



## LOCATION MAP

NOT TO SCALE

### Project Description:

The goal of the project is to restore Lake Tahoe's clarity and protect a sensitive stream environment zone (SEZ) through effective and safe conveyance of urban runoff from the project area and the downstream to treatment facilities. The current condition allows for excessive sediment and nutrient transport to the SEZ through uncontrolled urban runoff conveyance, directly discharging to a perennial stream historically known as "Slump Alley". Slump Alley is a sensitive riparian area with annual flows that house a unique brook trout population and stream environment zone that flows to protected State Park known as the Washoe Meadows State Park. The current configuration requires the use of roadside ditching and excessive road maintenance disturbance, due to surface elevation of the road being equal to or lower than the surrounding SEZ. This Project intends to responsibly convey water from the existing road along North Upper Truckee Road and down Lake Tahoe Boulevard to Mountain Meadow Drive, which will provide water quality, SEZ restoration, fisheries, general transportation and social benefits to Lake Tahoe and the surrounding community. The proposed project will evaluate the best methods to alleviate the current road impacts to the SEZ through a responsible and collaborative approach, with the best interest of Slump Alley stream in mind.

Project Initiation Date: 2/13/2007



# North Upper Truckee SEZ Restoration Project

## Financing Plan & Tentative Schedule

Project No: 36107012

Type: Erosion Control - (EIP)

Supervisor District(s) 5

### All Figures in Thousands

Revenue Source	Prior FY*	FY 25/26	FY 26/27	FY 27/28	FY 28/29	FY 29/30	FY 30/31-34/35	FY 35/36-44/45	Total
United States Forest Service (USFS)	264	136							400
Tahoe Regional Planning Agency/Stream Environmental Zone		39							39
To Be Determined		175	2,525						2,700
Totals	264	350	2,525						3,139

### All Figures in Thousands

Expenditures	Prior FY*	FY 25/26	FY 26/27	FY 27/28	FY 28/29	FY 29/30	FY 30/31-34/35	FY 35/36-44/45	Total
Plng/Env Consultant	84								84
Plng/Env DOT Staff	180								180
Design Consultant									
Developer Advanced Design									
Design DOT Staff		350							350
ROW Acquisition									
ROW Utility Relocation									
ROW Consultant									
ROW DOT Staff									
Constr Eng Consultant			25						25
Const Eng Staff			300						300
Construction			2,200						2,200
Developer Built									
Environmental Mitig. Monitor Consult.									
Environmental Mitig. Monitor Staff									
Plant Establishment - Consultant									
Plant Establishment - Staff									
Totals	264	350	2,525						3,139

Schedule	Prior FY*	FY 25/26	FY 26/27	FY 27/28	FY 28/29	FY 29/30	FY 30/31-34/35	FY 35/36-44/45
Planning/Environmental								
Design								
Construction								

\*Prior FY includes actual revenue and expenditures through 6/30/2024, plus amounts estimated through 6/30/2025.



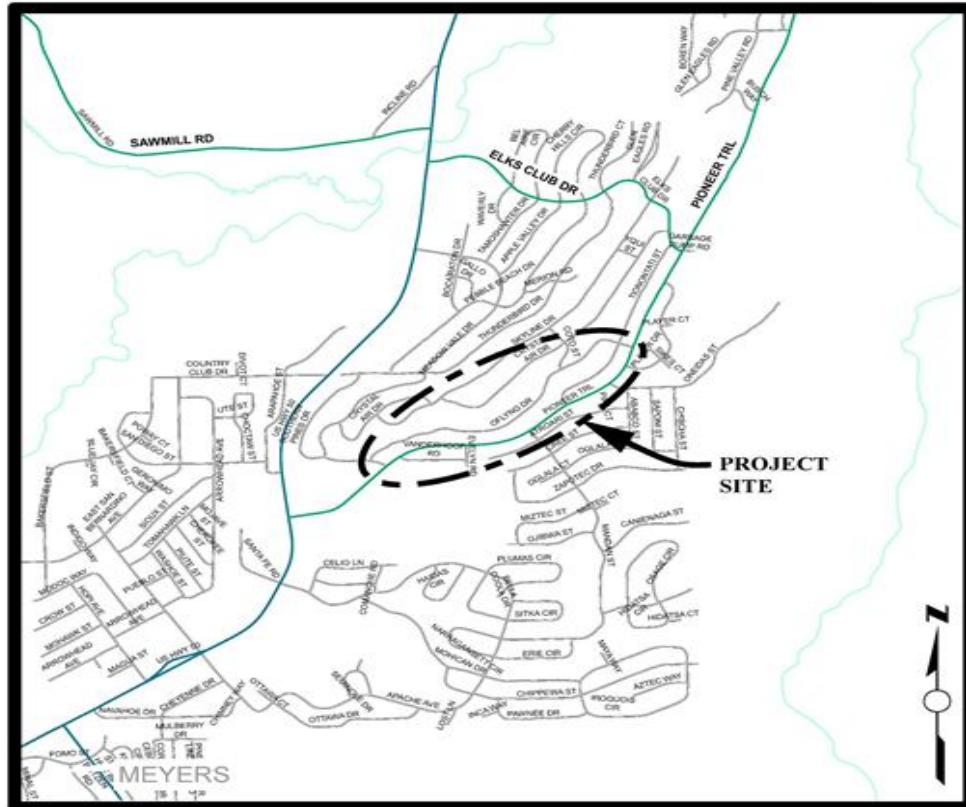
# Oflying Water Quality Project

## CIP Project Summary

Project No: 36107016

Type: Erosion Control - (EIP)

Supervisor District(s) 5



## LOCATION MAP

NOT TO SCALE

### Project Description:

The Oflying Water Quality Project is within the Country Club Heights subdivision (Unit 5) and Tahoe Paradise Subdivision (Unit 48), more specifically between Crystal Air Drive at the upper northerly boundary to Pioneer Trail to the south and Southern Pines Drive at the westerly boundary to Elks Club Drive to the east. The project benefits will include increased water quality of urban stormwater and dry weather runoff through infiltration, addressing flood management issues with Low Impact Design principles, and community outreach on stormwater as a resource.

Project Initiation Date: 3/18/2014



# Oflyng Water Quality Project

## Financing Plan & Tentative Schedule

Project No: 36107016

Type: Erosion Control - (EIP)

Supervisor District(s) 5

### All Figures in Thousands

Revenue Source	Prior FY*	FY 25/26	FY 26/27	FY 27/28	FY 28/29	FY 29/30	FY 30/31-34/35	FY 35/36-44/45	Total
California Tahoe Conservancy (CTC)	3								3
Tahoe Regional Planning Agency/Water Quality	250	10							260
United States Forest Service (USFS)	1,600								1,600
State Water Resources Control Board	85								85
Erosion Control Fund									
Totals	1,938	10							1,948

### All Figures in Thousands

Expenditures	Prior FY*	FY 25/26	FY 26/27	FY 27/28	FY 28/29	FY 29/30	FY 30/31-34/35	FY 35/36-44/45	Total
Plng/Env Consultant	65								65
Plng/Env DOT Staff	41								41
Design Consultant	10								10
Developer Advanced Design									
Design DOT Staff	195								195
ROW Acquisition									
ROW Utility Relocation									
ROW Consultant									
ROW DOT Staff									
Constr Eng Consultant									
Const Eng Staff	182								182
Construction	1,442								1,442
Developer Built									
Environmental Mitig. Monitor Consult.									
Environmental Mitig. Monitor Staff		10							10
Plant Establishment - Consultant	4								4
Plant Establishment - Staff									
Totals	1,938	10							1,948

Schedule	Prior FY*	FY 25/26	FY 26/27	FY 27/28	FY 28/29	FY 29/30	FY 30/31-34/35	FY 35/36-44/45
Planning/Environmental								
Design								
Construction								
Environmental Monitoring								

\*Prior FY includes actual revenue and expenditures through 6/30/2024, plus amounts estimated through 6/30/2025.



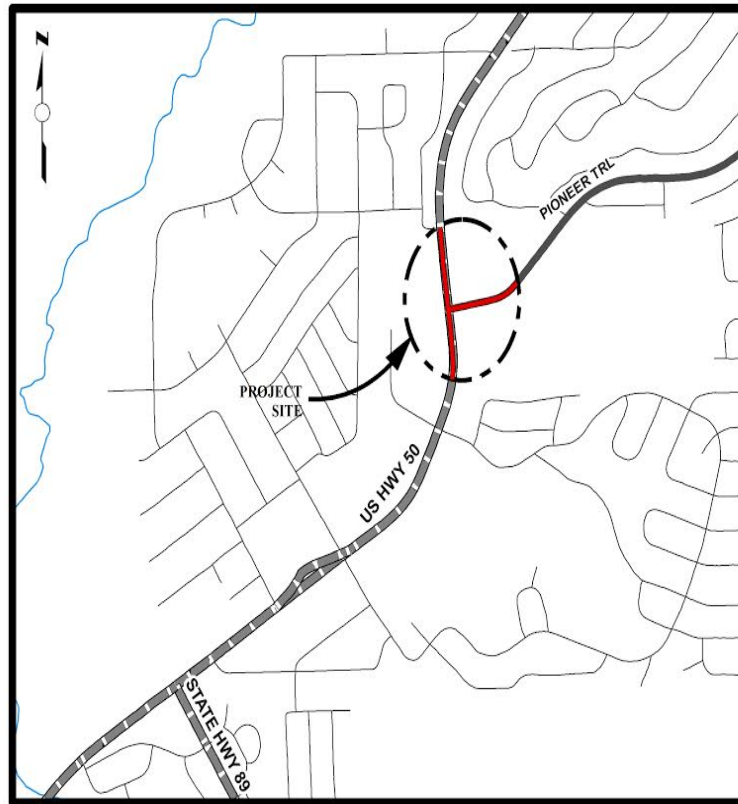
# Pioneer Trail/US Highway 50 Intersection Safety Improvement Project

## CIP Project Summary

Project No: 36104026

Type: Intersection

Supervisor District(s) 5



### LOCATION MAP

NOT TO SCALE

## Project Description:

This project will improve the intersection of US 50 and Pioneer Trail in Meyers by replacing the existing signalized intersection with a roundabout. Multiple agencies including El Dorado County, Caltrans Headquarters, Caltrans Maintenance, Caltrans Traffic Operations, CHP, TRPA, FHWA, participated in analyzing the U.S. 50 Meyers Corridor and this intersection for potential safety improvements in 2016. Nearly all of the project is in Caltrans right of way, and when Caltrans procedures are used to determine intersection improvements that will provide the greatest operational and safety benefits, it is likely that a roundabout will be constructed to replace the existing signalized intersection.

Project Initiation Date: 3/28/2017





# Pioneer Trail/US Highway 50 Intersection Safety Improvement Project

## Financing Plan & Tentative Schedule

Project No: 36104026

Type: Intersection

Supervisor District(s) 5

### All Figures in Thousands

Revenue Source	Prior FY*	FY 25/26	FY 26/27	FY 27/28	FY 28/29	FY 29/30	FY 30/31-34/35	FY 35/36-44/45	Total
Highway Safety Improvement Program (HSIP) - Federal	1,208	2,243							3,450
Tahoe Regional Planning Agency/Mobility Mitigation	150								150
Road Fund	1								1
Congestion Mitigation and Air Quality Program (CMAQ)	1,280	1,427							2,706
RSTP Fed Funds – Caltrans LA	1,518	962							2,480
State-Local Partnership Program (SLPP)	1,069	1,986							3,055
RSTP Exchange Funds-TRPA	15								15
Road Fund - Pending Reimbursement	15								15
Tahoe Regional Planning Agency/Water Quality	25	46							70
Totals	5,280	6,663							11,943

### All Figures in Thousands

Expenditures	Prior FY*	FY 25/26	FY 26/27	FY 27/28	FY 28/29	FY 29/30	FY 30/31-34/35	FY 35/36-44/45	Total
Plng/Env Consultant	566								566
Plng/Env DOT Staff	157								157
Design Consultant	5								5
Developer Advanced Design									
Design DOT Staff	933								933
ROW Acquisition	7								7
ROW Utility Relocation									
ROW Consultant	8								8
ROW DOT Staff	17								17
Constr Eng Consultant	488	906							1,394
Const Eng Staff	54	101							155
Construction	3,045	5,656							8,701
Developer Built									
Environmental Mitig. Monitor Consult.									
Environmental Mitig. Monitor Staff									
Plant Establishment - Consultant									
Plant Establishment - Staff									
Totals	5,280	6,663							11,943



Schedule	Prior FY*	FY 25/26	FY 26/27	FY 27/28	FY 28/29	FY 29/30	FY 30/31-34/35	FY 35/36-44/45
Planning/Environmental								
Design								
Right Of Way								
Construction								

\*Prior FY includes actual revenue and expenditures through 6/30/2024, plus amounts estimated through 6/30/2025.



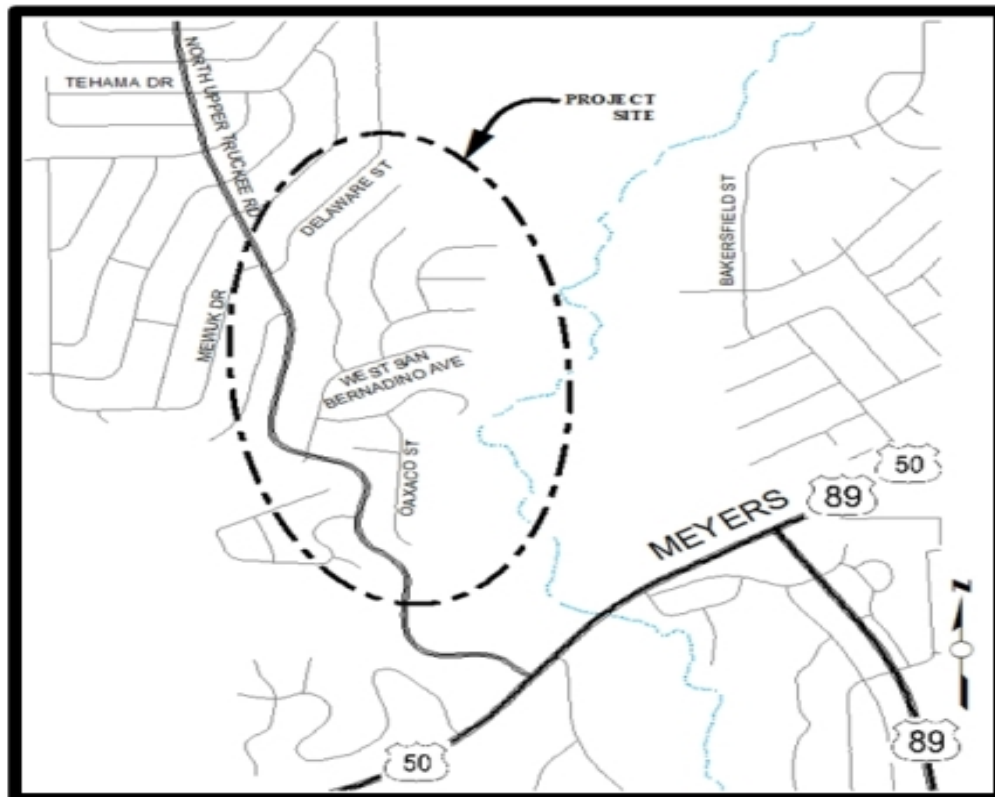
# San Bernardino Water Quality Project

## CIP Project Summary

Project No: 36107020

Type: Erosion Control - (EIP)

Supervisor District(s) 5



## LOCATION MAP

NOT TO SCALE

### Project Description:

(Formerly San Bernardino Erosion Control Project) This project will treat eroding cut and fill slopes in County right-of-way. Retain and treat the 25YR-1HR storm. The project also includes revegetation of disturbed areas. It will comply with future Total Maximum Daily Load (TMDL) requirements. Right-of-way acquisitions will be performed if needed.

Project Initiation Date: 3/28/2017



# San Bernardino Water Quality Project

## Financing Plan & Tentative Schedule

Project No: 36107020

Type: Erosion Control - (EIP)

Supervisor District(s) 5

### All Figures in Thousands

Revenue Source	Prior FY*	FY 25/26	FY 26/27	FY 27/28	FY 28/29	FY 29/30	FY 30/31-34/35	FY 35/36-44/45	Total
Tahoe Regional Planning Agency/Water Quality			9				21		29
To Be Determined			135	580			7		722
Totals			144	580			28		751

### All Figures in Thousands

Expenditures	Prior FY*	FY 25/26	FY 26/27	FY 27/28	FY 28/29	FY 29/30	FY 30/31-34/35	FY 35/36-44/45	Total
Plng/Env Consultant			35						35
Plng/Env DOT Staff			50						50
Design Consultant									
Developer Advanced Design									
Design DOT Staff			50	100					150
ROW Acquisition									
ROW Utility Relocation									
ROW Consultant									
ROW DOT Staff									
Constr Eng Consultant				3					3
Const Eng Staff			5	70			10		85
Construction				400					400
Developer Built									
Environmental Mitig. Monitor Consult.			1	1			2		4
Environmental Mitig. Monitor Staff			3	3			10		15
Plant Establishment - Consultant				1			1		2
Plant Establishment - Staff				3			5		8
Totals			144	580			28		751

Schedule	Prior FY*	FY 25/26	FY 26/27	FY 27/28	FY 28/29	FY 29/30	FY 30/31-34/35	FY 35/36-44/45
Planning/Environmental								
Design								
Construction								
Environmental Monitoring								

\*Prior FY includes actual revenue and expenditures through 6/30/2024, plus amounts estimated through 6/30/2025.



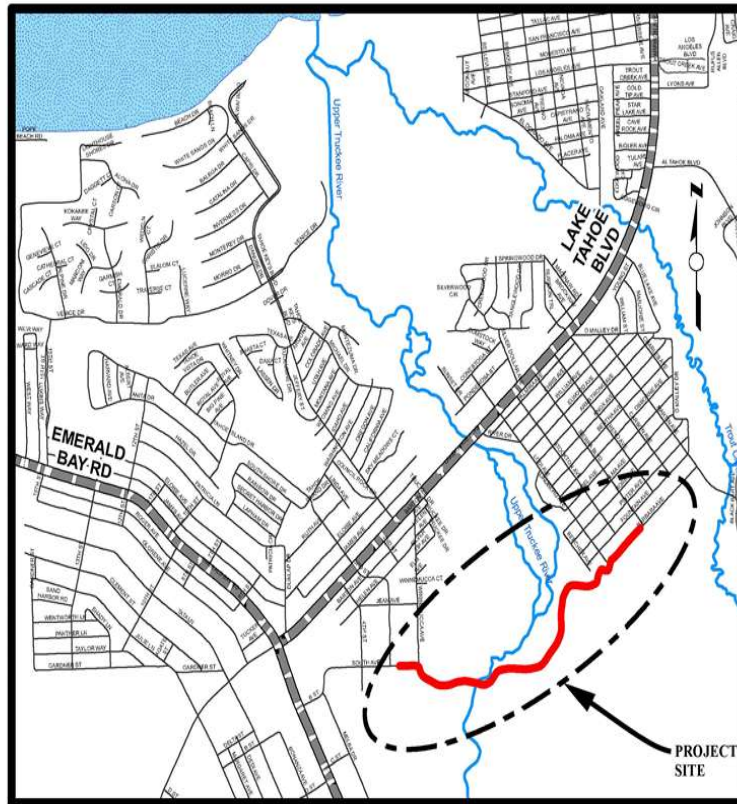
# South Tahoe Greenway - Upper Truckee River Bridge at Johnson Meadow

## CIP Project Summary

Project No: 36107023

Type: Pedestrian Way/Bike Path

Supervisor District(s) 5



### LOCATION MAP

NOT TO SCALE

## Project Description:

The South Tahoe Greenway - Upper Truckee Bridge at Johnson Meadow Project will build upon the Dennis T. Machida Memorial Greenway shared use path network through the south shore of Lake Tahoe. The Project aims to construct approximately 1.2 miles of a Class 1 shared use path and replacing a heavily trafficked bridge over the Upper Truckee River damaged by the 2017 winter storms. The Project will provide active transportation users a critical link to Barton Hospital from the west and the Tahoe Sierra neighborhood and the Lake Tahoe Community College to the east.

Project Initiation Date: 2/11/2020



# South Tahoe Greenway - Upper Truckee River Bridge at Johnson Meadow

## Financing Plan & Tentative Schedule

Project No: 36107023

Type: Pedestrian Way/Bike Path

Supervisor District(s) 5

### All Figures in Thousands

Revenue Source	Prior FY*	FY 25/26	FY 26/27	FY 27/28	FY 28/29	FY 29/30	FY 30/31-34/35	FY 35/36-44/45	Total
RSTP Fed Funds – Caltrans LA	682								682
Tahoe Regional Planning Agency/Mobility Mitigation	92								92
To Be Determined	48	1,980	7,355	58					9,441
Erosion Control Fund - Pending Reimbursement	31								31
Totals	853	1,980	7,355	58					10,245

### All Figures in Thousands

Expenditures	Prior FY*	FY 25/26	FY 26/27	FY 27/28	FY 28/29	FY 29/30	FY 30/31-34/35	FY 35/36-44/45	Total
Plng/Env Consultant	208								208
Plng/Env DOT Staff	349								349
Design Consultant	104								104
Developer Advanced Design									
Design DOT Staff	53								53
ROW Acquisition	100								100
ROW Utility Relocation									
ROW Consultant									
ROW DOT Staff	39								39
Constr Eng Consultant		50	40						90
Const Eng Staff		180	945						1,125
Construction		1,750	6,350						8,100
Developer Built									
Environmental Mitig. Monitor Consult.									
Environmental Mitig. Monitor Staff			10	50					60
Plant Establishment - Consultant			5	3					8
Plant Establishment - Staff			5	5					10
Totals	853	1,980	7,355	58					10,245

Schedule	Prior FY*	FY 25/26	FY 26/27	FY 27/28	FY 28/29	FY 29/30	FY 30/31-34/35	FY 35/36-44/45
Planning/Environmental								
Design								
Right Of Way								
Construction								
Environmental Monitoring								

\*Prior FY includes actual revenue and expenditures through 6/30/2024, plus amounts estimated through 6/30/2025.



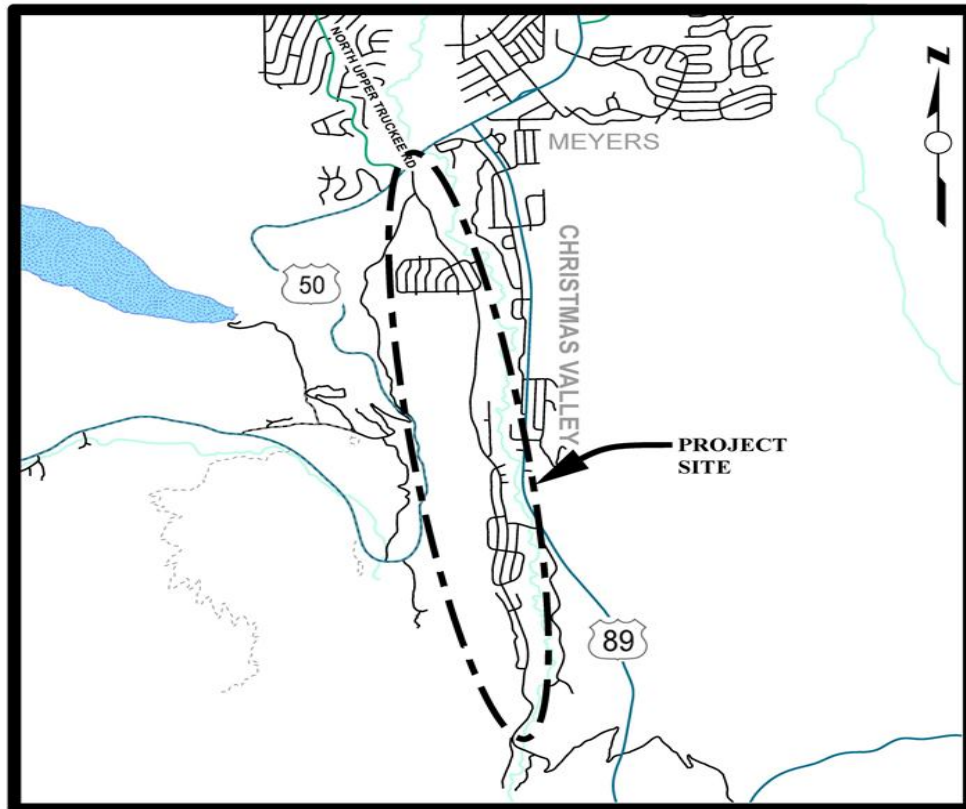
# South Upper Truckee Erosion Control Project

## CIP Project Summary

Project No: 36107013

Type: Erosion Control - (EIP)

Supervisor District(s) 5



## LOCATION MAP

NOT TO SCALE

### Project Description:

Treat eroding cut and fill slopes in County right-of-way. Reduce the very fine and fine sediment from the urban watersheds. Revegetation of disturbed areas. Install curb and gutter, rock-lined channels, sediment basins. Restore SEZ. Perform right-of-way acquisitions. This Project will most likely be split into several phases. It is anticipated that other grant funding will be available in the future through EIP grant funding programs available to the County.

Project Initiation Date: 12/6/2010



# South Upper Truckee Erosion Control Project

## Financing Plan & Tentative Schedule

Project No: 36107013

Type: Erosion Control - (EIP)

Supervisor District(s) 5

### All Figures in Thousands

Revenue Source	Prior FY*	FY 25/26	FY 26/27	FY 27/28	FY 28/29	FY 29/30	FY 30/31-34/35	FY 35/36-44/45	Total
Tahoe Regional Planning Agency/Stream Environmental Zone	65								65
Tahoe Regional Planning Agency/Water Quality	38								38
United States Forest Service (USFS)	38								38
To Be Determined			289						289
Totals	498	219	289						1,006

### All Figures in Thousands

Expenditures	Prior FY*	FY 25/26	FY 26/27	FY 27/28	FY 28/29	FY 29/30	FY 30/31-34/35	FY 35/36-44/45	Total
Plng/Env Consultant	190								190
Plng/Env DOT Staff	174	50							224
Design Consultant									
Developer Advanced Design									
Design DOT Staff	20	169							189
ROW Acquisition									
ROW Utility Relocation									
ROW Consultant									
ROW DOT Staff									
Constr Eng Consultant	46								46
Const Eng Staff	39		75						114
Construction	16		200						216
Developer Built									
Environmental Mitig. Monitor Consult.	1		1						2
Environmental Mitig. Monitor Staff	3		10						13
Plant Establishment - Consultant			2						2
Plant Establishment - Staff	7		1						8
Totals	498	219	289						1,006

Schedule	Prior FY*	FY 25/26	FY 26/27	FY 27/28	FY 28/29	FY 29/30	FY 30/31-34/35	FY 35/36-44/45
Planning/Environmental								
Design								
Right Of Way								
Construction								
Environmental Monitoring								

\*Prior FY includes actual revenue and expenditures through 6/30/2024, plus amounts estimated through 6/30/2025.