

COUNTY OF EL DORADO WILDFIRE STRATEGY

*Creating a Fire Adapted and Resilient El Dorado County
Through Collaboration and Coordination*



**ADOPTED BY THE BOARD OF SUPERVISORS
AUGUST 2023**

John Hidahl, District 1

George Turnboo, District 2

Wendy Thomas, District 3

Lori Parlin, District 4

Brooke Lane, District 5

This Wildfire Strategy was updated on March 27, 2026 to reflect the 2026 Annual Work Plan and other non-substantive changes

COUNTY OF EL DORADO WILDFIRE STRATEGY

Creating a fire adapted and resilient El Dorado County through collaboration and coordination.

EL DORADO COUNTY STRATEGIC PLAN - HEALTHY COMMUNITIES

Theme: Lead and facilitate the creation and maintenance of fire-adapted communities

Task: Prepare countywide Wildfire Protection Strategy

A comprehensive wildfire prevention and preparedness strategy for El Dorado County that fosters the creation, coordination and maintenance of fire adapted communities and is in alignment with federal, state, and local policies, plans and initiatives.

BACKGROUND

Wildfires continue to increase in frequency and intensity across California, most often resulting in hundreds of thousands of acres burned and thousands of homes destroyed each year. In 2020 for example, one of the most destructive years on record in California, over 4.3 million acres were burned and 11,116 homes were destroyed. Communities, both urban and those which are rural and sparsely populated are experiencing these impacts through more frequent and longer evacuations covering broader geographic areas, as well as the inability to obtain fire insurance, and significant economic loss.

Following the Caldor Fire in August 2021, the El Dorado County Board of Supervisors directed the Chief Administrative Office to form a Vegetation Management and Wildfire Resiliency Working Group to collaborate on lessons learned, define funding streams, and initiate a robust, community-based wildfire resiliency and vegetation management program that would accelerate current efforts in the County on both public and private lands. The Board Item can be found in Appendix A. The Wildfire Resiliency and Vegetation Management Working Group was comprised of the El Dorado County Chief Administrative Office, CAL FIRE Amador El Dorado Unit, Eldorado National Forest, El Dorado County Fire Chiefs Association, El Dorado County Fire Safe Council, El Dorado County Fire Prevention Officers Association, and the El Dorado and Georgetown Resource Conservation Districts.



The Working Group identified that El Dorado County lacks an organized and unified approach to addressing wildfire hazard and risk. Although many valuable efforts are taking place, there is no single process for establishing priorities, coordinating grant requests and investing limited resources. For example, there are numerous planning efforts across organizations and jurisdictions with limited or no coordination, including the CAL FIRE Unit Fire Plan, Community Wildfire Protection Plans, and the County General Plan Safety Element. Additionally, public outreach and messaging occurs independently by the various agencies and organizations, without a unified approach. Also, local Fire Safe Councils, County departments and other organizations are often operating independently and proposing overlapping projects, as well as competing with each other for grant funding.



There are, however, good examples of successful and strategic vegetation management projects with coordination and engagement of stakeholders across jurisdictional boundaries. One such success is the Fire Adapted 50 project, which played an important role in helping contain the Caldor Fire. This project brings together federal, state, local and private organizations

working together toward a coordinated, strategic approach to planning and implementing projects along the Highway 50 corridor.

In March 2022, the Working Group presented the following recommendations to the Board of Supervisors in response to the direction it provided in September 2021 (Appendix B):

- Update the County Strategic Plan to incorporate a theme addressing the need to lead and facilitate the creation and maintenance of fire-adapted communities.
- Establish and implement a strategic wildfire protection strategy for El Dorado County based on an overall assessment of hazard and values at risk. The strategy shall incorporate information already available wherever possible including the SOFAR Stewardship Strategy, Community Wildfire Protection Plans, CAL FIRE Unit Fire Plan, County Hazard Mitigation Plan and General Plan Safety Element.
- Establish a dedicated wildfire preparedness and resilience office within the Chief Administrator's Office to coordinate and prioritize efforts on a countywide level. The Office shall work to prevent duplication of efforts and leverage scarce and limited resources for the highest priority projects.
- Utilize opportunities to align with State and federal strategies including the California Wildfire and Forest Resilience Action Plan, Federal Wildfire Crisis Implementation Plan and California Strategic Fire Plan.
- Establish a broad stakeholder (partners) based organizational structure within defined membership and roles/responsibilities. In addition to the original working group members, the larger group should include utilities, other county departments, State and federal agencies, NGO's and existing collaboratives such as SOFAR and the Regional Forest and Fire Capacity Program.

The Board of Supervisors approved the recommendations, including the establishment of the Office of Wildfire Preparedness and Resilience (OWPR) effective July 1, 2022.

The Board of Supervisors added a new theme to the County Strategic Plan focusing on fire-adapted communities through the development of a countywide Wildfire Strategy. This Strategy will foster the creation, coordination and maintenance of fire adapted communities in alignment with federal, state, and local policies, plans and initiatives that are highlighted in Appendix C.

With the completion of its work for the Board of Supervisors, the Working Group has transitioned to a Coordination Group for the Chief Administrative Office, which includes coordinating with the broad base of stakeholders and interested parties engaged in wildfire preparedness and resilience.

GOVERNANCE

Wildfire Preparedness and Resilience Coordination Group

The members of the Coordination Group represent agencies and organizations whose missions and/or statutory authorities and funding include wildfire prevention and preparedness. This includes the addition of the Tahoe Fire and Fuels Team, to ensure representation across the entire county, and the El Dorado County Office of Emergency Services.

The current members are:

- El Dorado County - OWPR
- CAL FIRE Amador-El Dorado Unit
- Eldorado National Forest
- El Dorado County Fire Chiefs Association
- El Dorado County Fire Prevention Officers
- El Dorado County Fire Safe Council
- El Dorado County Sheriff's Office of Emergency Services
- El Dorado Georgetown Divide Resource Conservation Districts
- Tahoe Fire and Fuels Team
- El Dorado Water Agency

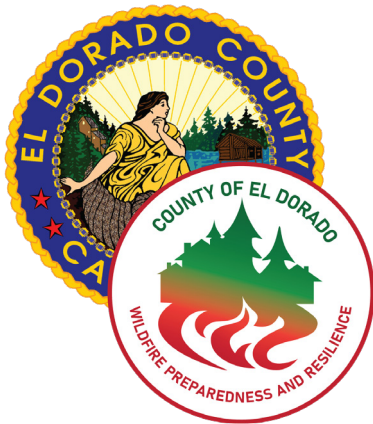


The Coordination Group developed a Charter to define its role and provide organizational structure for coordinating funding and project management across agencies and organizations, as well as establishing agreed-upon priorities. The Coordinating Group Charter and organizational chart can be found in Appendix D.

Participation of the members is voluntary, and each agency and organization retains its authorities and responsibilities identified with its own mission. All decisions are collaborative, and consensus based. The Coordination Group can form sub-committees/working groups as needed to implement the Strategic Elements of the Wildfire Strategy.

El Dorado County Office of Wildfire Preparedness and Resilience (OWPR)

Established within the Chief Administrative Office, OWPR acts as a liaison between the Coordination Group and the Chief Administrative Office and Board of Supervisors, working to ensure information exchange between county departments, Board of Supervisors, stakeholders, interested parties and the public. The OWPR activities and priorities are guided by an annual work plan (see Appendix E) established by the Chief Administrative Officer, which includes recommendations from the Coordination Group. The OWPR participates in regional and statewide efforts to facilitate funding opportunities, coordinates project activities and leverages partnerships. The Office also oversees the El Dorado County Defensible Space Ordinance and program. The El Dorado County Fire Safe Coordinator, working within OWPR, coordinates the Fire Adapted Communities Program, which includes working with Fire Safe Councils and Firewise Communities.



Engagement with Stakeholder and Interested Parties

Stakeholders have responsibility, resources (fiscal, technical or workforce), and/or expertise related to a specific project or activity. Through direct participation in the planning process, stakeholders have the ability to influence decision makers. Interested parties are individuals, groups or organizations that have a vested interest in the wildfire resilience of El Dorado County, but who may not have a stakeholder role in a particular project or activity. Interested parties are encouraged to participate in workshops and to comment on proposed activities and projects.

An individual or groups identification as a stakeholder or interested party can shift depending on the issue, project or activity.



A primary responsibility of the OWPR is to facilitate communications with stakeholders and interested parties through opportunities that allow for the exchange of information and ideas, as well as participation in the development of strategies, programs and projects.



STRATEGIC ELEMENTS OF THE WILDFIRE STRATEGY

The Coordination Group identified specific elements important to the implementation of a successful Wildfire Strategy. These elements range from policy development, coordinated planning, project implementation and communication across organizations and the public. The Coordination Group will establish working groups as needed and engage the broader community of stakeholders to develop and implement these elements.

Public Outreach

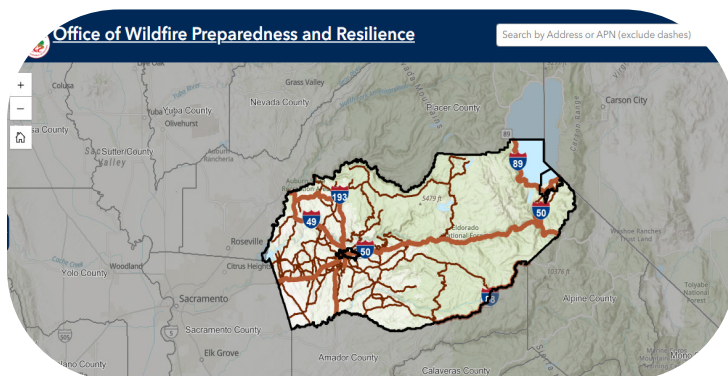
Successful implementation of the Wildfire Strategy requires a unified approach to communicating and exchanging information. The Coordination Group’s outreach plan will provide for the coordination and exchange of information with stakeholders, interested parties and the public to ensure consistent messaging and information sharing across media platforms, agencies, and organizations. This includes identifying initiatives, target audiences, timing, and appropriate media outlets and forums.



Policy

The Coordination Group monitors, evaluates, and provides feedback on federal, state and local laws, ordinances, regulations, policies, and other initiatives. It is important to ensure that El Dorado County and its partners have an understanding of policy initiatives that impact wildfire preparedness and resilience and opportunity to provide feedback and influence change as needed. This includes reviewing and commenting on draft legislation and regulations, as well as initiating and updating relevant local ordinances and policies.

Data Management and Sharing



To better facilitate the exchange of information with the public, partners, project planners, stakeholders and others, El Dorado County is developing and hosting an integrated data collection, sharing, and tracking platform. The platform will provide real-time information across agencies and organizations and a public facing dashboard and online mapping tool.

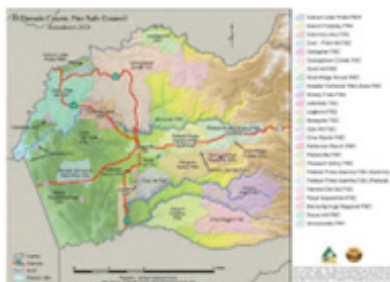
Planning

Planning efforts occur within each of the agencies and organizations to meet the requirements of their organizational missions. The Coordination Group has established a process to inform and coordinate wildfire prevention and mitigation planning efforts between various federal, state and local agencies as well as other organizations.

In addition to the coordination of planning efforts, El Dorado County will undertake the following critical planning and assessment initiatives:

Hazard and Risk Assessment - Perform and update a comprehensive wildfire hazard and risk assessment encompassing all of El Dorado County to guide the prioritization of wildfire preparedness and mitigation efforts.

A **hazard** is the probability that an area may burn, and the potential fire behavior that might exist. The hazard assessment will use the State Fire Hazard Severity Zone Map as the base layer. **Risk** is the probability that people or property can be harmed. Risk will consider existing conditions, including management activities, previous wildfire, and an agreed upon set of factors and definitions of values and assets at risk including critical infrastructure, historic buildings, and structural density. The initial and ongoing assessments will allow for prioritization by assigning ranking criteria to various values and assets at risk which include identifying areas with greatest potential for success and areas where improvements can be made in the chances of success during a wildfire. This is intended to be a dynamic process, knowing that both hazards and risks change over time.



WESTERN EL DORADO COUNTY COMMUNITY WILDFIRE PROTECTION PLAN UPDATE

February 15, 2023

Community Wildfire Protection Plan (CWPP) - A CWPP is a collaborative framework agreed to by state, tribal, and local government, local fire department, other stakeholders and federal land management agencies. A CWPP identifies and prioritizes areas for hazardous fuel reduction treatments and recommends the types and methods of treatment on federal and non-federal land that will protect one or more at-risk communities and essential infrastructure and recommends measures to reduce structural ignitability throughout the at-risk community. A CWPP may address issues such as wildfire response, hazard mitigation, community preparedness, or structure protection - or all of the above.

Update and expand the current Western El Dorado County CWPP to eliminate geographic gaps, validate critical infrastructure at risk, address omissions or conflicts related to other planning documents, consider the Tahoe Basin CWPP, and meet the requirements identified in the Healthy Forests Restoration Act. The Western El Dorado County CWPP is intended to be a dynamic document

initiated at a grass roots level that engages local fire safe councils, Firewise Communities and other locally led fire-safe initiatives.

Funding Coordination

The Coordination Group is facilitating opportunities to better coordinate available funding and ensure alignment across organizations, including local fire safe councils, to provide the greatest benefit and eliminate duplication and conflict with other organizations. Funding opportunities will be evaluated to determine the appropriate sponsor organization across jurisdictions, and the available capacity to obtain the greatest success. When opportunities exist to initiate lower priority projects that are “shovel ready”, these projects may be considered before higher priority projects that are not ready to implement.

Project Coordination-Western Slope

Project coordination will be achieved through the development and implementation of a framework that recognizes land management actions across mixed ownerships, jurisdictions and program areas. The coordination framework is grounded in the recognition that this is shared work with many partners. This includes continued close coordination with stakeholders involved with land management responsibilities including federal, state, tribes, local communities, private landowners and partners in the public and private sector, including conservation organizations, forest industry, utilities, and academia. It will also require continued focus and work with partners to ensure equity and environmental justice are built into the design and implementation of this Strategy. It should also include identifying opportunities for the utilization of vegetation, such as saw logs, and biomass.

Outcomes are achieved through projects designed to reduce wildfire risk to communities, critical infrastructure, ecological values, (including watersheds, wildlife habitat) ecosystem services (including carbon storage), economic values (including outdoor recreation, timber, and grazing areas), areas of cultural and historic significance (including areas important to Tribes), and areas of social importance to communities. There must be a clear process for tracking accomplishments and reporting progress.

Project planning and coordination should balance the existing project maintenance workload with new project development and implementation.



Project Coordination - Tahoe Basin



The Tahoe Basin has an established program and process for developing and implementing projects throughout the Basin. Through the leadership of the Tahoe Fire and Fuels Team, communities work on goals to reduce fuels in the wildland-urban interface and prepare communities for wildfire. The Coordination Group and the County will facilitate the communication and coordination of projects and initiatives between the West Slope and the Tahoe Basin.

APPENDICES

- A. September 2021 Board Action
- B. March 2022 Board Update
- C. Guiding Documents
- D. Coordination Group Charter and Organization Chart
- E. OWPR Annual Work Plan

APPENDIX A

September 2021 Board Action



County of El Dorado

330 Fair Lane, Building A
Placerville, California
530 621-5390
FAX 622-3645
www.edcgov.us/bos/

Legislation Details

File #: 21-1515 **Version:** 1
Type: Agenda Item **Status:** Approved
File created: 9/13/2021 **In control:** Board of Supervisors
On agenda: 9/21/2021 **Final action:** 9/21/2021
Title: Supervisors Thomas and Hidahl recommending the Board direct the Chief Administrative Office to convene an El Dorado County Vegetation Management and Resiliency Working Group. The working group would ideally include public, private, faith-based and non-profit organizations to collaborate on lessons learned from the Caldor Fire in order to define funding streams and initiate a robust, community-based resiliency and vegetation management program that would accelerate the current County efforts. Resiliency measures to improve public safety on both public and private lands from wildfire in El Dorado County could be a key component of the resultant recommendations.

Sponsors:

Indexes:

Code sections:

Attachments:

Date	Ver.	Action By	Action	Result
9/21/2021	1	Board of Supervisors	Approved	Pass
9/21/2021	1	Board of Supervisors	Approved	Pass

March 2022 Board Update



County of El Dorado

330 Fair Lane, Building A
Placerville, California
530 621-5390
FAX 622-3645
www.edcgov.us/bos/

Legislation Details

File #: 22-0491 **Version:** 1
Type: Agenda Item **Status:** Approved
File created: 3/4/2022 **In control:** Board of Supervisors
On agenda: 3/22/2022 **Final action:** 3/22/2022
Title: Chief Administrative Office recommending the Board of Supervisors:
1) Receive and file a presentation from the Vegetation Management and Wildfire Resiliency Working Group;
2) Approve in concept the establishment of an "Office of Wildfire Resilience" in the Chief Administrative Office; and
3) Designate \$3,375,000 of excess contingency funds as the local matching funds for a federal Hazard Mitigation Grant to conduct defensible space, home hardening work, and hazardous fuels reduction in the County.

FUNDING: General Fund.
Sponsors:
Indexes:
Code sections:
Attachments: 1. A - Presentation

Date	Ver.	Action By	Action	Result
3/22/2022	1	Board of Supervisors	Approved	Pass

Guiding Documents

Wildfire Preparedness and Resilience Guiding Documents and Programs

CA Wildfire and Forest Resilience Action Plan:

<https://wildfiretaskforce.org/wp-content/uploads/2022/12/californiawildfireandforestresilienceaction-plan.pdf>

- Implementation Strategy
- Roadmap to a Million Acres

2018 Strategic Fire Plan for California:

https://bof.fire.ca.gov/media/2a23d/2018-strategic-fire-plan-approved-08_22_18.pdf

2024 CAL FIRE AEU Unit Strategic Fire Plan:

<https://tinyurl.com/2024AEUPlan>

2019 Tahoe Fire and Fuels Team Lake Tahoe Basin Forest Action Plan:

<https://www.tahoelivingwithfire.com/wp-content/uploads/2018/11/TFFT-Lake-Tahoe-Basin-Forest-Action-Plan-2019.pdf>

Western El Dorado County Community Wildfire Protection Plan Update – 2/15/2022:

<https://www.edcfiresafe.org/wp-content/uploads/2022/07/EDC-CWPP-Final-2022-compressed.pdf>

Lake Tahoe Basin Community Wildfire Protection Plan:

<https://www.cityofslt.us/DocumentCenter/View/5809/Lake-Tahoe-Basin-Community-Wildfire-Protection-Plan>

2024 El Dorado County Multi-Jurisdictional Hazard Mitigation Plan:

https://www.eldoradocounty.ca.gov/files/assets/county/v/1/documents/public-safety-amp-justice/public-safety/sheriff/operations/oes/eldoradocounty_mjhmp_final_7.10.24.pdf

2022 El Dorado County General Plan Safety Element Update:

<https://www.eldoradocounty.ca.gov/Land-Use/Planning-and-Building/Long-Range-Planning-Division/Approved-Projects/2022-General-Plan-Safety-Element-Update>

El Dorado County Hazardous Vegetation and Defensible Space Ordinance:

<https://www.eldoradocounty.ca.gov/files/assets/county/v/3/documents/public-safety-amp-justice/wildfire-amp-disaster/defensible-space/chapter-8.09-hazardous-vegetation-and-defensible-space-ordinance.pdf>

APPENDIX C (continued)

Community Wildfire Preparedness and Mitigation:

<https://osfm.fire.ca.gov/what-we-do/community-wildfire-preparedness-and-mitigation>

- Wildfire Mitigation Advisory Committee (OSFM)

CA Wildfire Mitigation Program (CalOES/CAL FIRE):

<https://www.caloes.ca.gov/office-of-the-director/operations/recovery-directorate/hazard-mitigation/california-wildfire-mitigation-program/>

Firewise USA:

<https://www.nfpa.org/education-and-research/wildfire/firewise-usa>

Fire Adapted Communities:

<https://fireadapted.org/>

Confronting the Wildfire Crisis: A Strategy for Protecting Communities and Improving Resilience in America's Forests

<https://www.fs.usda.gov/sites/default/files/Confronting-Wildfire-Crisis.pdf>

Healthy Forest Restoration Act - 16 USC Ch. 84:

<https://uscode.house.gov/view.xhtml?path=/prelim@title16/chapter84&edition=prelim>

Coordination Group Charter and Organization Chart

Wildfire Preparedness and Resilience Coordination Group Organizational Charter July 2023

Background

Wildfires continue to increase in frequency and intensity across California, resulting in hundreds of thousands of acres burned and thousands of homes destroyed each year. Following the devastating Caldor Fire in August 2021, the El Dorado County Board of Supervisors directed the Chief Administrative Office to form a vegetation management and wildfire resiliency working group to collaborate on lessons learned, define funding streams and initiate a robust, community-based wildfire resiliency and vegetation management program that would accelerate current efforts in El Dorado County on both public and private lands. A working group was established comprised of the Chief Administrative Office, El Dorado County Fire Safe Council, CAL FIRE – Amador El Dorado Unit, Eldorado National Forest, El Dorado County Fire Chiefs Association, El Dorado County Fire Prevention Officers Association and the El Dorado and Georgetown Divide Resource Conservation Districts.

In early 2022, the Working Group prepared the following recommendations:

- Update the County Strategic Plan to incorporate a theme addressing the need to lead and facilitate the creation and maintenance of fire-adapted communities.
- Establish and implement a strategic wildfire protection strategy for El Dorado County based on an overall assessment of hazard and values at risk. The strategy shall incorporate information already available wherever possible including the SOFAR Stewardship Strategy, Community Wildfire Protection Plans, CAL FIRE Unit Fire Plan, County Hazard Mitigation Plan and General Plan Safety Element.
- Establish a dedicated wildfire preparedness and resilience office within the Chief Administrator's Office to coordinate and prioritize efforts on a countywide level. The Office shall work to prevent duplication of efforts and leverage scarce and limited resources for the highest priority projects.
- Utilize opportunities to align with State and federal strategies including the California Wildfire and Forest Resilience Action Plan, Federal Wildfire Crisis Implementation Plan and California Strategic Fire Plan.
- Establish a broad stakeholder (partners) based organizational structure within defined membership and roles/responsibilities. In addition to the original working group members, the larger group should include utilities, other county departments, State and federal agencies, NGO's and existing collaboratives such as SOFAR and the Regional Forest and Fire Capacity Program.

APPENDIX D (continued)

The Board of Supervisors on March 22, 2022, approved the recommendations, including the establishment of the Office of Wildfire Preparedness and Resilience (OWPR) effective July 1, 2022. With the completion of its work for the Board of Supervisors, the Working Group has transitioned to a Coordination Group for the Chief Administrative Office.

Mission Statement

Work with stakeholders and interested parties to create a fire adapted and resilient El Dorado County guided by a comprehensive wildfire prevention and preparedness strategy.

Membership

- El Dorado County – OWPR
- CAL FIRE Amador-El Dorado Unit
- Eldorado National Forest
- El Dorado County Fire Chiefs Association
- El Dorado County Fire Prevention Officers
- El Dorado County Fire Safe Council
- El Dorado County Sheriff's Office of Emergency Services
- El Dorado and Georgetown Divide Resource Conservation Districts
- Tahoe Fire and Fuels Team
- El Dorado Water Agency*

**In June 2024, the El Dorado Water Agency was added as a member of the Coordination Group*

Guiding Principles and Responsibilities

- Participation is voluntary and each agency and organization retains its authorities and responsibilities identified with its own mission.
- Recommendations are collaborative and consensus based.

Goals

- Provide recommendations to the Chief Administrative Office related to the implementation of a comprehensive wildfire prevention and preparedness strategy for El Dorado County in alignment with federal, state, and local initiatives.
- Lead and facilitate the creation and maintenance of fire adapted communities.
- Provide an organizational structure to coordinate funding and project management across agencies and organizations and establish agreed upon priorities based on the countywide risk assessment.

APPENDIX D (continued)

- Develop a coordinated approach to public outreach with consistent messaging across media platforms, agencies, and organizations.
- Participate in a real time integrated data sharing platform administered by El Dorado County.
- Provide technical and policy input and recommendations on local planning and regulatory efforts, including the General Plan Safety Element, Local Hazard Mitigation Plan, building standards and vegetation management ordinance.

Meetings

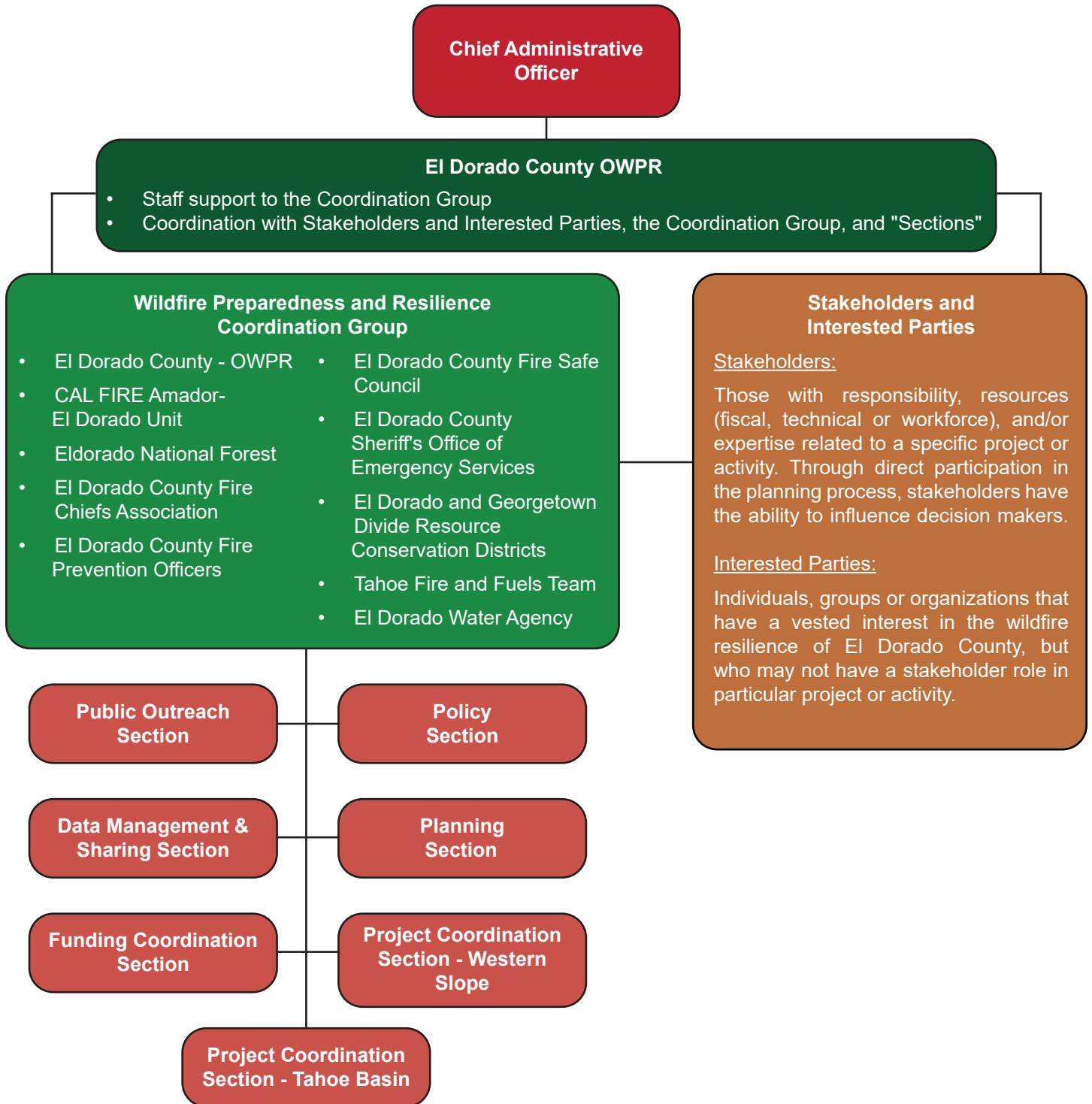
Bi-weekly unless otherwise agreed based upon need.

Organizational Structure

The Chief Administrative Office's OWPR is responsible for implementing a Wildfire Strategy for El Dorado County. The Coordinating Group is an informal body of agencies and organizations responsible for wildfire preparedness and resilience which shares information and provides technical review and recommendations to assist the OWPR in the development implementation of the Wildfire Strategy.

Coordination Group will share information with interested parties and engage stakeholders to work on planning and policy activities. The Coordination Group can form sub-committees/working groups as needed, including relevant stakeholders, to carry out the Committee's goals. See attached organization chart.

**Wildfire Preparedness and Resilience Coordination Group
Organizational Chart**



OWPR Annual Work Plan

Office of Wildfire Preparedness and Resilience Annual Work Plan 2026

Coordination of Planning Efforts

Promote a common strategy to addressing wildfire preparedness and prevention in El Dorado County by continuing to facilitate communication and coordination across agencies and organizations, ensuring individual planning strategies, efforts and reporting processes are informed by other agency and organization planning efforts, and are not in conflict with each other.

- Develop and implement a system of metrics to track activities and outcomes.
 - CWPP and Data Hub Dashboards
 - Coordinate with El Dorado County Fire Safe Council to crosswalk data sharing
 - Defensible Space Inspections
 - Firewise Communities
 - Prescribed Burning
 - Fuel Breaks
 - Installation of Water Sources (tanks)
 - Community Outreach Events
 - Other
- Monitor wildfire prevention and mitigation planning efforts, or other wildfire related policies and due dates.
- Facilitate and support the Project Coordination Working Group.
- Continue plan alignment efforts.
- Evaluate new planning tools, new technologies for data collection and analysis; and fire behavior modeling, including structural ignition and influence on fire behavior both from governmental organizations, private businesses, and philanthropic entities.
- Participate with the Regional and Watershed-level planning groups.
- Support project development to create landscape-scale and multi-benefit projects to increase potential funding opportunities.
- Monitor and engage on Biomass utilization efforts and support the County's Biomass Coordinator's efforts.

APPENDIX E (continued)

CWPP

Implement the updated Community Wildfire Protection Plan (CWPP).

- Present Final CWPP to Board of Supervisors for approval.
- Develop the CWPP storyboard and dashboard.
- Continue to input and update metrics for proposed, current, and completed projects. Coordinate the implementation of the CWPP through the Project Coordination Working Group.
 - Implement action items
 - Identify funding opportunities
 - Re-evaluate project priority lists
 - Integrate the RCD Project Pipeline process as opportunities become available
- Partner with the El Dorado County Fire Safe Council and associate councils to host planning area implementation meetings.
- Develop an annual reporting process outlining specific CWPP accomplishments to be presented to the CWPP Advisory Committee (formerly CWPP Steering Committee).
- Complete project scope and environmental review for hazardous fuels treatment projects (i.e. fuel break projects) funded through the Bureau of Land Management Grant.
- Develop maintenance plan for fuels treatment projects including those funded through the Bureau of Land Management Grant.

County Data Hub

Lead the effort to expand and manage the County Data Hub library for all partner agencies and organizations under the umbrella of the Coordination Group.

- Establish and facilitate the County Data Hub Working Group.
- Determine specific data elements to be included with project information within the Data Hub.
- Continue to identify data sources to be included. Work as necessary with partner agencies and organizations to gain access to other data sources
- Develop and maintain public facing pages for online mapping tool, dashboard, metrics, and project progress.
- Update the Coordination Group on roll-out stages and timeframes.
- Incorporate the EDC Raw Water Draft Points into the Data Hub.
- Share data as appropriate with other data collaboratives.

APPENDIX E (continued)

Public Outreach

Facilitate the sharing of information and input on proposed strategies and processes between the Coordination Group, OWPR, stakeholders, interested parties and others related to the wildfire prevention and preparedness strategy for El Dorado County.

- Maintain a comprehensive list of stakeholders and interested parties.
- Maintain the OWPR website with current information on programs and activities.
- Engage in regular public outreach such as social media posts, press releases, and coordinate with the Mountain Democrat for content in the Disaster Resource Guide.
- Facilitate the Public Outreach Working Group to collaboratively develop information content and coordination of dissemination.
- Participate in community events, such as County Fair, Fire Safe Council events, etc.
- Develop outreach materials and other messaging, including flyers, factsheets, and informational videos to improve resident awareness of relevant laws, regulations, and best management practices.
- Create and publish a County Emergency Preparedness Workbook, formerly the Wildfire Preparedness Workbook.
- Develop campaigns based on the Wildfire Awareness Season Proclamation and other events and topics.

Defensible Space Program

Implement the coordinated Defensible Space Program throughout El Dorado County based on the recommendations of the Defensible Space Working Group.

- Amend the Hazardous Vegetation and Defensible Space Ordinance, Chapter 8.09.
- Identify County Emphasis Areas (CEAs) in coordination with CAL FIRE Defensible Space Inspection Areas (DSIAs) and local fire district focused inspection areas.
- Facilitate Defensible Space information and education messaging for 2026, including coordinated postcard notifications.
- Develop and maintain a public facing dashboard of defensible space inspection activity.
- Coordinate Fire Safe Council assessment requests with the El Dorado County Fire Safe Council. Contract with the Fire Safe Council to fund assessment stipends through the Bureau of Land Management grant.
- Continue to participate and support defensible space assessment training with Fire Safe Councils and partner agencies.

APPENDIX E (continued)

- Finalize and implement the OWPR Defensible Space Program database for tracking County inspections.
- Contract with CAL FIRE to perform additional defensible space inspections funded through the Bureau of Land Management grant.

Grant Administration

Monitor grant and funding opportunities that are appropriate to support OWPR, partners and stakeholders, recommended actions of the CWPP, and other activities within the Project Coordination Working Group.

- California Wildfire Mitigation Program Grant (FEMA HMGP – Weber Creek Project):
 - Finalize initial property assessments on no issue parcels.
 - Complete the RFQ process for defensible space and home hardening contractors.
 - Initiate defensible space and home hardening activities on no-issue parcels.
 - Continue public outreach through community events and other materials in partnership with Placerville Fire Safe Council, City of Placerville and the El Dorado County Fire Protection District.
 - Coordinate with other agencies and organizations through the Project Coordination Working Group to identify additional projects augmenting CWMP grant funded activities, such as roadside maintenance, utility corridor maintenance, telecommunications infrastructure defensible space, hazardous vegetation treatments, improved road signage, and reflective property address signage.
 - Pursue additional CWMP grant funding to augment current grant accomplishments.
- Bureau of Land Management Grant:
 - Identify existing and new opportunities to partner with the El Dorado County Fire Safe Council and RCD to perform vegetation treatments on BLM and adjacent lands.
 - Engage BLM on defensible space activities on BLM lands adjacent to private lands.

County Coordinator

Implement California's County Coordinator program in El Dorado County.

- Represent the County at state-wide and regional events, including workshops, conferences, and presentations.
- Participate as a member of the state-wide County Coordinator Steering Committee and Mentor Program.

APPENDIX E (continued)

Firewise Communities

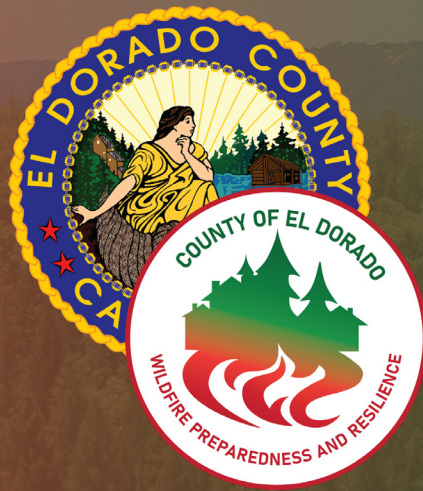
Serve as the Firewise Regional Coordinator for the West Slope of El Dorado County.

- Continue to evaluate program needs and responsibilities to support the growing Firewise network.
- Facilitate meetings to bring together local communities, fire districts, CAL FIRE and others in order to develop a standard approach for risk assessments and 3-year Action Plans.
- Maintain Firewise Communities to ensure contact and boundary information is up to date and accurate.
- Maintain Firewise Community maps in the Data Hub.
- Develop a guide on becoming a Firewise Community and maintaining designation.
- Build out the Firewise section of the OWPR website.

Insurance

- Identify opportunities to partner with insurance industry representatives, risk modelers, and communities to build wildfire resiliency and provide pilot projects that support insurability.
- Continue to monitor insurance industry initiatives, including *Safer From Wildfire*, and engage as appropriate.

Creating a Fire Adapted and Resilient El Dorado County Through Collaboration and Coordination



County of El Dorado

Office of Wildfire
Preparedness and Resilience

360 Fair Lane
Placerville, CA

(530) 621-5569
wildfireready@edcgov.us