



# Voter Information Pamphlet

## Statewide Special Consolidated Election

Tuesday, November 4, 2025

### What's Inside?

- Voting Options
- Candidate Statements
- Ballot Measures
- Arguments
- Impartial Analyses
- Vote Center Locations
- Drop Box Locations
- How to Request a Remote Accessible Vote by Mail Ballot

### Important Dates:

**October 6** - Ballots Mailed

**October 6** - Drop Boxes Open

**October 25** - 11 Day Vote Centers Open

**October 28** - LAST Day to Request a Ballot by Mail

**November 1** - 4 Day Vote Centers Open

**November 4** - Election Day Vote Centers Open – 7am – 8pm


THIS VOTER INFORMATION  
PAMPHLET CONTAINS **ALL**  
CONTESTS IN EL DORADO COUNTY,  
REFER TO YOUR BALLOT FOR  
CONTESTS YOU ARE ELIGIBLE TO  
VOTE ON!


**El Dorado County Elections Department**  
3883 Ponderosa Rd  
Shingle Springs, CA 95682

Open Monday through Friday, 8am to 5pm


 [www.eldoradocounty.ca.gov/Elections](http://www.eldoradocounty.ca.gov/Elections)

 [vbm@edcgov.us](mailto:vbm@edcgov.us)

 Office: 530-621-7480

 Toll Free: 800-730-4322

 CA RELAY: 711

 Fax: 530-677-1014



## Vote by Mail

All registered voters will receive a ballot in the mail.

Ballots will be mailed on **October 6**.

If you do not receive a ballot in the mail by **October 20**, or need a replacement ballot, call us at **530-621-7480** or **800-730-4322** or come into our office at 3883 Ponderosa Rd., Shingle Springs, CA 95682.

You can return your ballot at an official County election drop box, at a vote center in El Dorado Hills Community Services District, or in the mail.

- \* Be sure to use only black or blue ink to mark your ballot.
- \* Be sure to SIGN the return envelope.

## Vote Early at the Elections Office

You may vote early starting **October 6**, in our office located at 3883 Ponderosa Rd., Shingle Springs, CA 95682.

**Monday through Friday, 8am to 5pm**

**Election Day hours are 7am to 8pm**

## Vote at a Vote Center

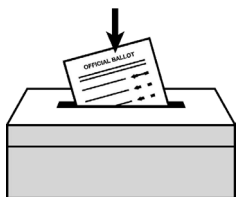
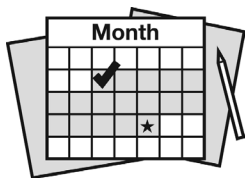
**11** day Vote Centers will open on **October 25th**.

**4** day Vote Centers will open on **November 1st**.

- \* Election Day, **November 4th**.

**The Election Day Vote Center is open from: 7am to 8pm**

\*Locations and hours can be found inside this pamphlet. Certain locations have yet to be finalized. A separate mailer containing this information will be sent to households. Additional details will also be available on the El Dorado County Elections Department website [www.eldoradocounty.ca.gov/Elections](http://www.eldoradocounty.ca.gov/Elections). If you have questions call our office at: **530-621-7480** or **800-730-4322**



Sign-up at [www.WheresMyBallot.sos.ca.gov](http://www.WheresMyBallot.sos.ca.gov)

to receive an automatic email, SMS (text),  
or voice call notification about your ballot.





# Accessible Voting

## At the Vote Center:

All Vote Centers are ADA accessible with temporary thresholds or ramps, if needed.

## Accessible Voting System:

Each Vote Center has at least three accessible ballot marking devices that offer:



- An audio option that reads the ballot to you,
- A handheld tactile device with a universal plug for a personal assistive device,
- Large text size with three viewing versions,
- Spanish language ballot if you choose.

## Curbside Voting:

Voters may also visit any Vote Center and ask for curbside voting assistance. Call our office at: **530-621-7480** or **800-730-4322**.

## Remote Accessible Vote by Mail Ballot (RAVBM) Assistance:

RAVBM allows voters to mark their selections using their own compatible technology to vote independently and privately in the comfort of their own home. You must have a printer to complete an RAVBM ballot.

## How to request an RAVBM ballot:

- ✓ First, the voter must be registered in El Dorado County - you can check your voter status at: **[voterstatus.sos.ca.gov](http://voterstatus.sos.ca.gov)**. You can select to receive an RAVBM ballot on this page from 29 days before the election through election day, or
- ✓ Second, go to our website:  
**[www.eldoradocounty.ca.gov/County-Government/Elections/Accessible-Voting](http://www.eldoradocounty.ca.gov/County-Government/Elections/Accessible-Voting)**

Complete the on-line form and submit it according to the directions on the form and mail the wet signature back to us at the address provided on the form.

1. You will receive an email with a link to your ballot.
2. Mark your selections.
3. Download the balloting materials.
4. Print your ballot.
5. Sign the Declaration & Oath of Voter (this is the bottom section on the instructions to voter page).
6. Return the printed and signed Declaration & Oath, along with the marked ballot, either by mail or by dropping it off at a vote center location or ballot drop box.
7. Note: The ballot cannot be returned electronically.



## Language Needs Information

### NOTICE TO VOTERS WITH LIMITED ENGLISH PROFICIENCY:

LanguageLine Solutions is our partner to eliminate any language barrier, including American Sign Language. Through them we have nearly instant access to trained video interpreters through a high-quality video application. This will help to reduce your frustration, make the interaction more efficient so you can get through your voting experience easier, and provide outstanding service to our limited English proficient, (LEP) and Deaf and Hard-of-Hearing customers.

**NOTE:** The electronic Ballot Marking devices at each Vote Center will also have Spanish as an available option or you may request a Spanish paper ballot.

All Vote Centers will offer a Spanish ballot. To request to have one sent to you before Election Day, please call our office at (530) 621-7480. Requests must be received no later than 7 days before Election Day.

If you need assistance when voting, you may bring up to two people with you to your polling place, as long as they are not representatives of your employer or your union. Bring a family member or friend!

---

### AVISO A LOS VOTANTES CON DOMINIO LIMITADO DEL INGLÉS:

LanguageLine Solutions es nuestro socio para eliminar cualquier barrera lingüística, incluido el lenguaje de señas americano. A través de ellos, tenemos acceso casi instantáneo a intérpretes de video capacitados a través de una aplicación de video de alta calidad. Esto ayudará a reducir su frustración, hará que la interacción sea más eficiente para que pueda pasar por su experiencia de votación más fácil y brindará un servicio excepcional a nuestros clientes con dominio limitado del inglés (LEP) y sordos y con problemas de audición.

**NOTA:** Los dispositivos electrónicos para marcar boletas en cada Centro de Votación también tendrán español como una opción disponible o puede solicitar una boleta de papel en español.

Todos los Centros de Votación ofrecerán una boleta en español. Para solicitar que le envíen uno antes del día de las elecciones, llame a nuestra oficina al (530) 621-7480. Las solicitudes deben recibirse a más tardar 7 días antes del día de las elecciones.

Si necesita ayuda para votar, puede llevar hasta dos personas a su lugar de votación, siempre y cuando no sean representantes de su empleador o de su sindicato. ¡Traiga a un familiar o amigo!



## Candidate/Measure Information

**The following pages contain countywide voter information. Please refer to your ballot for the contests that are applicable to you.**

These pages may include any/all of the following items:



CANDIDATE STATEMENTS  
BALLOT MEASURES  
IMPARTIAL ANALYSES  
ARGUMENTS FOR AND AGAINST

### Candidate Statement Information

Candidate statements are optional so this pamphlet section may not contain a statement for each candidate. A complete list of candidates appears on the ballot. Each candidate's statement in this pamphlet is offered by the candidate and is printed at the expense of the candidate unless otherwise determined by the governing body. Each candidate's statement is printed in uniform format exactly as submitted by the candidate.

## INSTRUCTIONS TO VOTERS

### DO NOT PLACE PERSONAL INFORMATION ON YOUR BALLOT (EC14287)

- Personal information/Identifying marks may void your ballot and it may not be counted.
- Personal information includes, but is not limited to, name, initials, address, SSN, CDL, etc.

#### Step One:

Use only a blue or black ink ballpoint pen to mark your ballot. Do not use red ink pens, sharpies, markers or any other type of pen.

To vote for any Candidate, fill in the oval to the left of your choice.

To vote for any Ballot Question, fill in the oval to the left of your choice of YES or NO.

NO



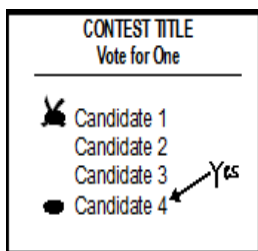
NO



YES



#### To Correct an Error:



#### Step Two:

Sign the Declaration of Voter on the return identification envelope.

Your signature on your envelope must match your signature on your voter registration record. If you fail to sign the Declaration of Voter on the return identification envelope, your ballot cannot be counted. Place your voted ballot in the return envelope provided and return it to the Elections Department.

**STATEMENT OF CANDIDATE FOR  
EL DORADO HILLS COMMUNITY SERVICE DISTRICT  
DIRECTOR**

**GARY KINGHORN**

**Occupation:**

**Education and Qualifications:** Do you want change or more status quo?

As a 10-year EDH resident, I share growing public concerns about the direction of the El Dorado Hills Community Services District. I recently served as foreperson of the County Grand Jury, where I led investigations and authored 2024 reports highlighting CSD issues including legal challenges, financial irregularities, invalid assessments, and unmet promises.

EDHCSD faces escalating legal costs, some stemming from lawsuits against the County and its own residents. It's time for responsible leadership that demands transparency, fiscal accountability, and strategic planning. We must overhaul the district's long-term vision to ensure our roughly \$20 million annual budget delivers high-quality assets and services.

Key community projects at Bass Lake, the Executive Golf Course, and Carson Creek deserve viable, transparent plans. Property development should include meaningful community input, and all funding mechanisms must be legal and fair. Waste and mismanagement must be identified and eliminated.

I've built and led efficient, high-performing organizations and bring the leadership, research, and communication skills needed to deliver real results. EDHCSD should be a top-tier community asset, worthy of its funding and your trust. With your support, I will work to restore integrity and transparency to the board. For a change.

<http://bit.ly/kinghorn4csd>

**STATEMENT OF CANDIDATE FOR  
EL DORADO HILLS COMMUNITY SERVICE DISTRICT  
DIRECTOR**

**WAYNE A. LOWERY**

**AGE: 76**

**Occupation:** Parks & Recreation Director, Retired

**Education and Qualifications:** I served as the El Dorado Hills Community Services District General Manager (1990-2010) and elected Board Member (2010-2018). At the EDHCSD I oversaw the development of 19 parks, major increases in recreation program services, initiated secure funding sources to assure future maintenance of capital facilities, and established developer impact fees for the construction of new parks. I have 50+ years' experience in the park & recreation field. I am a National Recreation & Park Association certified "Leisure Professional" and California Park & Recreation Society past president. Current local community service activities include member and Past President of the El Dorado Hills Chamber of Commerce, Past President of El Dorado Hills Rotary Club and Advisor to the Rotary-sponsored Oak Ridge High School Interact Club. In addition, I am a 5-year member and presently chair of the El Dorado County Parks Commission, a 7-year member of the EDHCSD CC&R Design Review Committee and a 11-year trustee with the El Dorado Hills Promise Foundation serving as Board Secretary and on both the Bass Lake Regional Park and the Veteran's Memorial Committees. I believe my professional experience and knowledge of the community can benefit the responsibilities of the District's governing board.

## **FULL TEXT OF MEASURE B**

### **SETTING FOR MAILED BALLOT ELECTION A MEASURE TO IMPOSE A SPECIAL TAX FOR THE PURPOSE OF PROVIDING ROAD IMPROVEMENT AND MAINTENANCE SERVICES FOR THE FERNWOOD-COTHRIN RANCH ROAD ZONE OF BENEFIT #98114 WITHIN COUNTY SERVICE AREA #9**

**WHEREAS**, the Board of Supervisors of the County of El Dorado formed County Service Area (CSA) No. 9 pursuant to Title 3, Division 2, Part 2, Chapter 2.2 of the California Government Code and established zones of benefit within CSA No. 9; and

**WHEREAS**, this Board formed the Fernwood-Cothrin Ranch Road Zone of Benefit No. 98114 on April 30, 1985 by Resolution 91-85 for the purposes of providing road improvements and maintenance services; and

**WHEREAS**, the extended services provided within CSA No. 9 zones are authorized services pursuant to Government Code section 25213; and

**WHEREAS**, California Government Code section 25215.2, together with section 25217.4, expressly authorizes a zone within a county service area to levy a special tax for road improvement and maintenance services subject to voter approval; and

**WHEREAS**, pursuant to California State Law, the Board of Supervisors is required to place before the electorate the approval of the measure as shown on Exhibit A before the special tax can be levied, or increased over the amount previously approved by the electorate; and

**WHEREAS**, the County Registrar of Voters has determined that four hundred seventy-six (476) registered voters reside within the zone of benefit boundaries; and

**WHEREAS**, such special tax amount increase shall take effect only if approved by a two-thirds majority of the voters casting a ballot in the special tax ballot proceeding; and

**WHEREAS**, the zone advisory committee has determined an annual special tax amount of \$450.00 annually adjusted for cost of living using the Engineering News Record Construction Cost Index for each parcel of land, whether it is improved or unimproved regardless of use, is reasonable and sufficient to provide road improvement and maintenance services within the zone of benefit for the fiscal year 2026/2027, and thereafter; and

**WHEREAS**, if the measure as shown on Exhibit A does not pass, the existing special tax of \$150.00 shall remain in effect.

**NOW, THEREFORE, BE IT RESOLVED** by the Board of Supervisors that:

1. The measure shown on Exhibit A shall be submitted to the voters of the Fernwood-Cothrin Ranch Road Zone of Benefit 98114 within County Service Area 9.
2. The El Dorado County Registrar of Voters shall submit the measure as shown on Exhibit A to the electorate in a mailed ballot election to be held on November 4, 2025.
3. The tax as shown on Exhibit A, if approved, shall appear as a separate item on the tax bill of each affected parcel and shall be collected at the same time and in the same manner as county ad valorem property taxes are collected as set forth in the applicable provisions of the Revenue and Taxation Code, and shall be subject to the same penalties and the same procedure and sale in case of delinquency as provided for such taxes. All laws applicable to the levy, collection, and enforcement of county property taxes shall be applicable to the tax.
4. The Director of Transportation, or designee, is delegated the authority to annually adjust the rate of the tax for cost of living using the Engineering News Record Construction Cost Index.
5. The special tax is subject to the accountability measures required by State Law, including Government Code sections 50075.1.
6. Notification shall be provided of the special tax increase, if approved, to each non-resident property owner within the zone boundaries, in accordance with the requirements of Government Code section 54930.
7. The special tax amount shown on Exhibit A shall take effect and be imposed only if it is approved by a two-thirds majority of the votes cast on the measure in the election to be conducted on November 4, 2025.

#### **Ballot Question**

“Shall the measure to levy an annual special tax in an amount of \$450.00 with annual adjustments tied to the Engineering News Record Construction Cost Index on each parcel of land within the Fernwood-Cothrin Ranch Zone of Benefit commencing fiscal year 2026/2027 and continuing for an unlimited duration, to be used only for road improvements and maintenance and generating an annual revenue of approximately \$118,800.00, to replace the current special tax of \$150.00, be adopted?”

## **IMPARTIAL ANALYSIS OF MEASURE B**

Measure B (the “Measure”), if approved by two-thirds of the voters voting thereon, would authorize the levy of an increased special tax at the rate of \$450 per parcel (whether improved or unimproved) per year within the Fernwood Cothrin Ranch Road Zone of Benefit #98114 of County Service Area 9 (the “Zone”). This Measure was placed on the ballot by the Board of Supervisors of the County of El Dorado at the request of the advisory committee for the Zone pursuant to Resolution No. 075-2025, which was passed at an official meeting of the Board of Supervisors on June 17, 2025.

If the Measure is approved, it would increase the special tax within the Zone from \$150 to \$450 per parcel per year. The amount of the special tax may be adjusted annually in accordance with the Engineering News Record Construction Cost Index. The special tax will be used solely for the purpose of road improvements and maintenance services within the Zone. It would become effective in Fiscal Year 2026/2027 and remain in effect until modified or repealed by the voters. The special tax authorized by this Measure is expected to generate annual revenue of approximately \$118,800. If the Measure is not approved, the existing special tax of \$150 per parcel per year will remain in effect.

State law requires the proceeds from the special tax be applied only to the identified purposes and that an annual report be made indicating the amount of funds collected and expended and the status of any project required or authorized to be funded by the proceeds.

The special tax authorized by this Measure will be listed as a separate item on the county property tax bill for each affected parcel of land and will be collected in the same manner as the general property tax. All laws applicable to the levy, collection, and enforcement of county property taxes, including the provisions for penalties and the procedures for sale of the property in case of delinquency, shall also apply to the special tax.

A “YES” vote is a vote to increase the annual special tax in the Fernwood Cothrin Ranch Road Zone of Benefit from \$150 to \$450 per parcel, as provided in the Measure.

A “NO” vote is a vote against the increase of the special tax.

David A. Livingston  
El Dorado County  
County Counsel

## ARGUMENT IN FAVOR OF MEASURE B

Dear Fernwood-Cothrin Neighbors,

We all know that the roads in our Zone of Benefit need work and that repairs aren't keeping up. We maintain our homes - and we need to maintain our roads. **This measure will increase the per-parcel road tax to \$450.00 a year from \$150.00 a year - the equivalent of raising our daily "road cost" to \$1.23 per day from 41 cents. If passed, this will be the first time in 27 years - since 1998 - that the road tax will go up. *There are no other funds available to fix our roads, which are not eligible for other public funds.***

Currently, the special tax collects \$39,600 per year from the 264 parcels within the Zone. The county fixed administrative fees and insurance costs have increased substantially-- for FY 25-26, those fees are estimated at \$10,043.00 and \$10,525.00, respectively, leaving only 18,642.00 for road work. These costs are assessed on each County Zone of Benefit based on zone miles, not as a proportion of special tax revenue. \$450.00 per parcel would generate \$118,800, leaving approximately \$98,000 available for road work and savings for large projects.

Over the last four years, the volunteer Zone of Benefit Advisory Committee has spearheaded three chipseal projects on Ranch Gate and Cothrin Ranch Road between Sun Ridge Ranch and Heather Lane, and has purchased multiple pallets of QPR road patch for volunteer use. Last year, there were not enough funds to do more than to buy road patch material. There is no reserve for emergency repairs, like a \$100,000.00 culvert failure. There are many segments of our through-routes - Cothrin, Fernwood, Bullard - that need attention, and there are culverts and ditches to repair.

**Please vote "yes" on Measure B so we can get to work!**

Christine Kudija - Fernwood-Cothrin Zone of Benefit 98114 Key Contact

**NO ARGUMENT AGAINST FILED**

## **FULL TEXT OF MEASURE C**

### **SETTING FOR MAILED BALLOT ELECTION A MEASURE TO IMPOSE A SPECIAL TAX FOR THE PURPOSE OF PROVIDING ROAD IMPROVEMENT AND MAINTENANCE SERVICES FOR THE MEADOWVIEW ACRES ZONE OF BENEFIT #98125 WITHIN COUNTY SERVICE AREA #9**

**WHEREAS**, the Board of Supervisors of the County of El Dorado formed County Service Area (CSA) No. 9 pursuant to Title 3, Division 2, Part 2, Chapter 2.2 of the California Government Code and established zones of benefit within CSA No. 9; and

**WHEREAS**, this Board formed the Meadowview Acres Road Zone of Benefit No. 98125 on August 6, 1985 by Resolution 213-85 for the purposes of providing road improvements and maintenance services; and

**WHEREAS**, the extended services provided within CSA No. 9 zones are authorized services pursuant to Government Code section 25213; and

**WHEREAS**, California Government Code section 25215.2, together with section 25217.4, expressly authorizes a zone within a county service area to levy a special tax for road improvement and maintenance services subject to voter approval; and

**WHEREAS**, pursuant to California State Law, the Board of Supervisors is required to place before the electorate the approval of the measure as shown on Exhibit A before the special tax can be levied, or increased over the amount previously approved by the electorate; and

**WHEREAS**, the County Registrar of Voters has determined that one hundred seventy-nine (179) registered voters reside within the zone of benefit boundaries; and

**WHEREAS**, such special tax amount increase shall take effect only if approved by a two-thirds majority of the voters casting a ballot in the special tax ballot proceeding; and

**WHEREAS**, the zone advisory committee has determined an annual special tax amount of \$450.00 for each parcel of land, whether it is improved or unimproved regardless of use, is reasonable and sufficient to provide road improvement and maintenance services within the zone of benefit for the fiscal year 2026/2027, and thereafter; and

**WHEREAS**, if the measure as shown on Exhibit A does not pass, the existing special tax of \$350.00 shall remain in effect.

**NOW, THEREFORE, BE IT RESOLVED** by the Board of Supervisors that:

1. The measure shown on Exhibit A shall be submitted to the voters of the Meadowview Acres Road Zone of Benefit 98125 within County Service Area 9.
2. The El Dorado County Registrar of Voters shall submit the measure as shown on Exhibit A to the electorate in a mailed ballot election to be held on November 4, 2025.
3. The tax as shown on Exhibit A, if approved, shall appear as a separate item on the tax bill of each affected parcel and shall be collected at the same time and in the same manner as county ad valorem property taxes are collected as set forth in the applicable provisions of the Revenue and Taxation Code, and shall be subject to the same penalties and the same procedure and sale in case of delinquency as provided for such taxes. All laws applicable to the levy, collection, and enforcement of county property taxes shall be applicable to the tax.
4. The special tax is subject to the accountability measures required by State Law, including Government Code sections 50075.1.
5. Notification shall be provided of the special tax increase, if approved, to each non-resident property owner within the zone boundaries, in accordance with the requirements of Government Code section 54930.
6. The special tax amount shown on Exhibit A shall take effect and be imposed only if it is approved by a two-thirds majority of the votes cast on the measure in the election to be conducted on November 4, 2025.

### **Ballot Question**

“Shall the measure to levy an annual special tax in an amount of \$450.00 on each parcel of land within the Meadowview Acres Zone of Benefit commencing fiscal year 2026/2027 and continuing for an unlimited duration, to be used only for road improvements and maintenance and generating an annual revenue of approximately \$42,300, to replace the current special tax of \$350, be adopted?”

## **IMPARTIAL ANALYSIS OF MEASURE C**

Measure C (the “Measure”), if approved by two-thirds of the voters voting thereon, would authorize the levy of an increased special tax at the rate of \$450 per parcel (whether improved or unimproved) per year within the Meadowview Acres Road Zone of Benefit #98125 of County Service Area 9 (the “Zone”). This Measure was placed on the ballot by the Board of Supervisors of the County of El Dorado at the request of the advisory committee for the Zone pursuant to Resolution No. 077-2025, which was passed at an official meeting of the Board of Supervisors on June 17, 2025.

If the Measure is approved, it would increase the special tax within the Zone from \$350 to \$450 per parcel per year. The special tax will be used solely for the purpose of road improvements and maintenance services within the Zone. It would become effective in Fiscal Year 2026/2027 and remain in effect until modified or repealed by the voters. The special tax authorized by this Measure is expected to generate annual revenue of approximately \$42,300. If the Measure is not approved, the existing special tax of \$350 per parcel per year will remain in effect.

State law requires the proceeds from the special tax be applied only to the identified purposes and that an annual report be made indicating the amount of funds collected and expended and the status of any project required or authorized to be funded by the proceeds.

The special tax authorized by this Measure will be listed as a separate item on the county property tax bill for each affected parcel of land and will be collected in the same manner as the general property tax. All laws applicable to the levy, collection, and enforcement of county property taxes, including the provisions for penalties and the procedures for sale of the property in case of delinquency, shall also apply to the special tax.

A “YES” vote is a vote to increase the annual special tax in the Meadowview Acres Road Zone of Benefit from \$350 to \$450 per parcel, as provided in the Measure.

A “NO” vote is a vote against the increase of the special tax.

David A. Livingston  
El Dorado County  
County Counsel

**NO ARGUMENT FOR OR AGAINST FILED**

## **FULL TEXT OF MEASURE E**

### **SETTING FOR MAILED BALLOT ELECTION A MEASURE TO IMPOSE A SPECIAL TAX FOR THE PURPOSE OF PROVIDING ROAD IMPROVEMENT AND MAINTENANCE SERVICES FOR THE WALNUT DRIVE ROAD ZONE OF BENEFIT #98124 WITHIN COUNTY SERVICE AREA #9**

**WHEREAS**, the Board of Supervisors of the County of El Dorado formed County Service Area (CSA) No. 9 pursuant to Title 3, Division 2, Part 2, Chapter 2.2 of the California Government Code and established zones of benefit within CSA No. 9; and

**WHEREAS**, this Board formed the Walnut Drive Road Zone of Benefit No. 98124 on August 6, 1985 by Resolution 212-85 for the purposes of providing road improvements and maintenance services; and

**WHEREAS**, the extended services provided within CSA No. 9 zones are authorized services pursuant to Government Code section 25213; and

**WHEREAS**, California Government Code section 25215.2, together with section 25217.4, expressly authorizes a zone within a county service area to levy a special tax for road improvement and maintenance services subject to voter approval; and

**WHEREAS**, pursuant to California State Law, the Board of Supervisors is required to place before the electorate the approval of the measure as shown on Exhibit A before the special tax can be levied, or increased over the amount previously approved by the electorate; and

**WHEREAS**, the County Registrar of Voters has determined that one hundred sixty (160) registered voters reside within the zone of benefit boundaries; and

**WHEREAS**, such special tax amount increase shall take effect only if approved by a two-thirds majority of the voters casting a ballot in the special tax ballot proceeding; and

**WHEREAS**, the zone advisory committee has determined an annual special tax amount of \$685.00 for each parcel of land, whether it is improved or unimproved regardless of use, is reasonable and sufficient to provide road improvement and maintenance services within the zone of benefit for the fiscal year 2026/2027, and thereafter; and

**WHEREAS**, if the measure as shown on Exhibit A does not pass, the existing service charge of \$325.00 shall remain in effect.

**NOW, THEREFORE, BE IT RESOLVED** by the Board of Supervisors that:

1. The measure shown on Exhibit A shall be submitted to the voters of the Walnut Drive Road Zone of Benefit 98124 within County Service Area 9.
2. The El Dorado County Registrar of Voters shall submit the measure as shown on Exhibit A to the electorate in a mailed ballot election to be held on November 4, 2025.
3. The tax as shown on Exhibit A, if approved, shall appear as a separate item on the tax bill of each affected parcel and shall be collected at the same time and in the same manner as county ad valorem property taxes are collected as set forth in the applicable provisions of the Revenue and Taxation Code, and shall be subject to the same penalties and the same procedure and sale in case of delinquency as provided for such taxes. All laws applicable to the levy, collection, and enforcement of county property taxes shall be applicable to the tax.
4. The special tax is subject to the accountability measures required by State Law, including Government Code sections 50075.1.
5. Notification shall be provided of the special tax increase, if approved, to each non-resident property owner within the zone boundaries, in accordance with the requirements of Government Code section 54930.
6. The special tax amount shown on Exhibit A shall take effect and be imposed only if it is approved by a two-thirds majority of the votes cast on the measure in the election to be conducted on November 4, 2025.

### **Ballot Question**

“Shall the measure to levy an annual special tax in an amount of \$685.00 on each parcel of land within the Walnut Drive Zone of Benefit commencing fiscal year 2026/2027 and continuing for an unlimited duration, to be used only for road improvements and maintenance and generating an annual revenue of approximately \$51,375, to replace the current benefit assessment of \$325, be adopted?”

## IMPARTIAL ANALYSIS OF MEASURE E

Measure E (the “Measure”), if approved by two-thirds of the voters voting thereon, would authorize the levy of a special tax at the rate of \$685 per parcel (whether improved or unimproved) per year within the Walnut Drive Road Zone of Benefit #98124 of County Service Area 9 (the “Zone”). This Measure was placed on the ballot by the Board of Supervisors of the County of El Dorado at the request of the advisory committee for the Zone pursuant to Resolution No. 078-2025, which was passed at an official meeting of the Board of Supervisors on June 17, 2025.

If the Measure is approved, it would authorize the levy of a special tax of \$685 per parcel per year, replacing an existing benefit assessment of \$325 per parcel per year. The special tax will be used solely for the purpose of road improvements and maintenance services within the Zone. It would become effective in Fiscal Year 2026/2027 and remain in effect until modified or repealed by the voters. The special tax authorized by this Measure is expected to generate annual revenue of approximately \$51,375. If the Measure is not approved, the existing benefit assessment of \$325 per parcel per year will remain in effect.

State law requires the proceeds from the special tax be applied only to the identified purposes and that an annual report be made indicating the amount of funds collected and expended and the status of any project required or authorized to be funded by the proceeds.

The special tax authorized by this Measure will be listed as a separate item on the county property tax bill for each affected parcel of land and will be collected in the same manner as the general property tax. All laws applicable to the levy, collection, and enforcement of county property taxes, including the provisions for penalties and the procedures for sale of the property in case of delinquency, shall also apply to the special tax.

A “YES” vote is a vote to authorize the levy of an annual special tax in the Walnut Drive Road Zone of Benefit in an amount of \$685 per parcel, as provided in the Measure.

A “NO” vote is a vote against the levy of the special tax.

David A. Livingston  
El Dorado County  
County Counsel

## ARGUMENT IN FAVOR OF MEASURE E

Asking for your support to increase annual funds collected to maintain our Zone of Benefit roads. Road maintenance funds are collected with property taxes from each parcel as part of the County Road Zone of Benefit (ZOB) Program.

**Our roads are maintained exclusively through this program.**

The current funds collected -- \$325 annually per parcel -- **have not increased since 1997, 28 years ago.** We face major challenges in keeping up with basic road maintenance due to inadequate funds. The condition of our roads is deteriorating at the current funding level.

Over the past 28 years both traffic volume and maintenance costs have increased significantly.

The initial design of our paved roads did not account for the heavy use we see today:

- Overall significant increase in population and traffic on our zone roads
- Significant increase in heavy truck traffic, including weekly trash truck pick-up at most property driveways, daily multiple deliveries by UPS, FedEx, & Amazon, etc.

The cost of materials and labor to maintain our roads has increased exponentially over the past 28 years. **With the changes in road use and increased maintenance costs our ZOB funds only enable us to address a portion of the most critical road repairs each year.**

The County ZOB program includes neighbors who volunteer to be on the Advisory Board for our road zone, and volunteer events to place cold patch on potholes. We are asking for your support to be able to continue to maintain our roads.

**Please vote YES for the Measure E to increase our Zone of Benefit funds from \$325 to \$685 per parcel annually.**

Maureen Brennan-Petitt - Walnut Drive Road Zone of Benefit Registered Voter in District

**NO ARGUMENT AGAINST FILED**

## Sign up to track your ballot

### Where's my ballot?

The Secretary of State's office is offering voters a way to track and receive notifications on the status of their vote-by-mail ballot. Sign-up at: **WheresMyBallot.sos.ca.gov** to receive automatic email, SMS (text), or voice call notifications about your ballot.

**\*\*YOU MUST HAVE YOUR CA ID AND SSI NUMBER ON YOUR VOTER REGISTRATION FORM FOR BALLOTTRAX TO WORK FOR YOU**

**\*\*If you have any problems using BallotTrax, or with the information provided, please contact the Secretary of State's office by phone at (800) 345-8683 or by email at [elections@sos.ca.gov](mailto:elections@sos.ca.gov)**



## Facts about voting by mail in El Dorado County

After a ballot is received by the elections department, it is checked in for tracking purposes. Every signature is compared to the signature on the voter's registration card. If something doesn't match, the elections department will contact the voter to let them know. After a ballot is accepted for counting, it is carefully removed from its envelope, ensuring that the voters' privacy is protected. Once the ballot is removed from the envelope, it is counted by the central scanning equipment and then sealed in containers that are only opened for the post-election audit. Voter's privacy and their vote are always protected throughout the process. This entire process is available for the public to view.

- Postage is pre-paid on all return ballots.
- All signatures are compared to the signature on your voter registration card.
- If the signature doesn't match, you will be contacted and given an opportunity to correct the issue.
- You do not have to vote on all contests. Those you do vote on will still count.
- If you make a mistake, you can make the correction on your ballot by putting an "X" through the incorrect choice bubble, then filling in the correct choice bubble, or you can ask for a replacement ballot.

**Always contact the elections department for accurate information about voting. For information about voting in El Dorado County, please call 530-621-7480 or 800-730-4322 or visit the website at: [www.eldoradocounty.ca.gov/Elections](http://www.eldoradocounty.ca.gov/Elections)**



# Vote Center and Drop Box Locations

LOCATION OF VOTE CENTER	ADDRESS OF VOTE CENTER	DAYS & HOURS OF OPERATION	ELECTION DAY HOURS OF OPERATION
		<b>11 Day Vote Centers</b>	
El Dorado Hills Community Services District - The Pavillion	1021 Harvards Way El Dorado Hills	10/25/2025 to 11/3/2025 8:30am to 4:30pm	Election Day 11/4/2025 7am to 8pm
Lake Tahoe Community College Aspen Room	1 College Dr. South Lake Tahoe	10/25/2025 to 11/3/2025 8:30am to 4:30pm	Election Day 11/4/2025 7am to 8pm
		<b>4 Day Vote Centers</b>	
Cameron Park CSD Gym/Multipurpose Room	2502 Country Club Dr. Cameron Park	11/01/2025 to 11/3/2025 8:30am to 4:30pm	Election Day 11/4/2025 7am to 8pm
TBD Lotus		11/01/2025 to 11/3/2025 8:30am to 4:30pm	Election Day 11/4/2025 7am to 8pm
Placerville Library Room to Left of the Lobby	345 Fair Lane Placerville	11/01/2025 to 11/3/2025 8:30am to 4:30pm	Election Day 11/4/2025 7am to 8pm
Pioneer Park Community Center Main Hall	6740 Fairplay Rd Somerset	11/01/2025 to 11/3/2025 8:30am to 4:30pm	Election Day 11/4/2025 7am to 8pm
LOCATION OF DROP BOX	ADDRESS OF DROP BOX	DAYS & HOURS OF OPERATION	ELECTION DAY HOURS OF OPERATION
El Dorado County Elections Drive up Access	3883 Ponderosa Rd Shingle Springs	10/6/2025 to 11/4/2025 <b>24 Hours</b>	Closes at 8pm*
Cameron Park Library Drive up Access	2500 Country Club Dr Cameron Park	10/6/2025 to 11/4/2025 <b>24 Hours</b>	Closes at 8pm*
Holiday Market Walk up access	5030 Ellinghouse Dr Cool	10/6/2025 to 11/4/2025 <b>7:30am to 7pm</b>	Closes at 8pm*
El Dorado Hills Park and Ride Drive up access	4640 Post St El Dorado Hills	10/6/2025 to 11/4/2025 <b>24 Hours</b>	Closes at 8pm*
El Dorado Hills Library Drive up access	7455 Silva Valley Pkwy El Dorado Hills	10/6/2025 to 11/4/2025 <b>24 Hours</b>	Closes at 8pm*
Marval Food Stores Walk up access	6049 Front St Georgetown	10/6/2025 to 11/4/2025 <b>7:30am to 7pm</b>	Closes at 8pm*
Building and Planning Building Drive up access	2850 Fairlane Ct, Bldg. C Placerville	10/6/2025 to 11/4/2025 <b>24 Hours</b>	Closes at 8pm*
Grocery Outlet Walk up access	1426 Broadway Placerville	10/6/2025 to 11/4/2025 <b>7:00am to 8pm</b>	Closes at 8pm*
Pioneer Park Community Center Drive up access	6740 Fairplay Rd Somerset	10/6/2025 to 11/4/2025 <b>24 Hours</b>	Closes at 8pm*
South Lake Tahoe Library Drive up access	1000 Rufus Allen Blvd South Lake Tahoe	10/6/2025 to 11/4/2025 <b>24 Hours</b>	Closes at 8pm*
Holiday Market Walk up access	2977 US Hwy 50 South Lake Tahoe	10/6/2025 to 11/4/2025 <b>7:30am to 7pm</b>	Closes at 8pm*

**\*NOTE: ALL DROP BOXES CLOSE AT 8PM ELECTION NIGHT\***

**\*TBD (To Be Determined):** Certain locations have yet to be finalized. A separate mailer containing this information will be sent to households. Additional details will also be available on the El Dorado County Elections Department website [www.eldoradocounty.ca.gov/Elections](http://www.eldoradocounty.ca.gov/Elections).