

## **June 2, 2026, Election**

### **Frequently Asked Questions**

#### **How do I register to vote?**

The easiest way to register is online at [www.registertovote.ca.gov](http://www.registertovote.ca.gov). Alternatively, you can get a voter registration card from any Post Office, library, DMV, or the Election Department at 3883 Ponderosa Rd. 95682. We can also mail a voter registration card to you at your request.

#### **Where can I register to vote?**

For voting purposes an individual must register at their residence. If an individual is un-housed the election department will identify the nearest location to register you.

For voting purposes, a voter's "Residence" means a person's domicile. Election Code 2031 says, if a person has more than one residence and maintains a homeowner's property tax exemption on the dwelling of one of the residences, it is presumed that the residence subject to the homeowner's property tax exemption is that person's domicile. The same presumption applies if a person has more than one residence and claims a renter's tax credit for one of the residences. It is presumed where an individual sees their doctor, where their children go to school, conducts everyday business is their domicile.

#### **How does my political party affiliation affect my June 2, 2026 Election?**

There is no party specific ballots for the Gubernatorial Primary Election.

#### **How do I check if I am registered to vote?**

You can check your voter registration at [www.registertovote.ca.gov](http://www.registertovote.ca.gov), you can also call our department to check your voter registration.

#### **When will I receive my vote by mail ballot for the June 2, 2026, election?**

Ballots will be mailed out May 4, 2026, please allow 7-10 days to receive your ballot before calling the election department to inquire about a replacement.

#### **Where is my ballot?**

You can sign up to track your ballot at [State of California \(ballottrax.net\)](http://StateofCalifornia(ballottrax.net))

#### **How do I vote by mail?**

All registered voters will receive a vote-by-mail ballot in the mail, voters may choose to vote that ballot or in person at any vote center in the county.

To vote by mail, follow the instructions in the voter information pamphlet, included with your ballot. When you have completed filling out your ballot, **remember to sign the return envelope for your voted ballot**, or your ballot cannot be counted.

If your signature does not match your voter registration record or you failed to sign your envelope, a postcard will be mailed to you with instructions on how to mitigate your signature.

Ballots may be returned to any official ballot drop box, at a vote center, or by mail. Look here for location and time of drop boxes and vote centers

<https://www.eldoradocounty.ca.gov/County-Government/Elections/Voting/Vote-Centers-and-Drop-Box-Locations>.

To be counted, voted ballots must be received by the Election Department not later than 8:00 p.m. on Election Day. If you place your ballot in the mail, it **MUST** be postmarked by Election Day and received by the Election Department within seven days after Election Day. Consider mailing your ballot back early.

### **How can I vote in person?**

El Dorado County is a vote center county. This means you have more ways and more days to vote. You can vote at any vote center in the county beginning 10 days before the election. For vote center hours and locations visit:

<https://www.eldoradocounty.ca.gov/County-Government/Elections/Voting/Vote-Centers-and-Drop-Box-Locations>

### **How can I vote while living overseas or in the military?**

As part of the Uniformed and Overseas Citizens Absentee Voting Act (UOCAVA), if you are in the military, a spouse of a military voter, an overseas citizen and do not currently reside in El Dorado County you are able to register and receive your ballot 45 days prior to the election. You can [register online](#) through the Secretary of State's website or by mailing a filled out [Federal Post Card Application](#) to our office.

You can email us at [vbm@edcgov.us](mailto:vbm@edcgov.us) for questions.

### **How can I get information about candidates and measures on the ballot?**

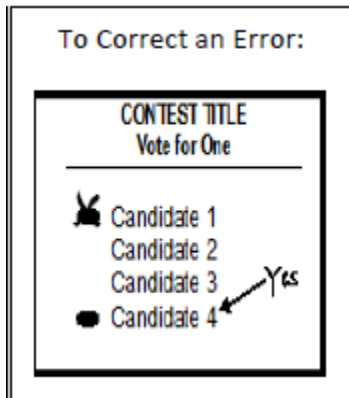
If you are a registered voter in El Dorado County, you will receive a combined voter information guide with your ballot. The combined guide will have all candidate statements submitted for the June election; voters will refer to their ballot for contest they are eligible to vote on. A supplemental measure guide will be mailed to voters who are in a district where a measure is to be voted on, the supplemental will be mailed at the same time as your vote by mail ballot. You can find the voter information guides on our [website](#).

Voters will receive the state voter information guide for the June election from the Secretary of State or you can view the State Guide on the [website](#).

## Can I watch the election process?

Yes, the public can view the election process from logic and accuracy testing through certification on our [website](#). The camera for each step of the process will become live when that step begins, the cameras will stay live 24 hours a day until certification of the election.

## What if I make a mistake on my Ballot?



If you need to correct an error on your ballot you may do so by making the marks as indicated in this image. If you would like a replacement ballot due to a mistake, loss of ballot, or damage to your ballot, or otherwise need a new ballot you can request a replacement ballot from the Elections office by contacting us:

Call the Elections office at: (530) 621-7480 or 1-800-730-4322

Email the elections office at: [vbm@edcgov.us](mailto:vbm@edcgov.us)

Include your full name, El Dorado County residence address, birth date, the date of the election you are requesting a ballot for, and the mailing address to send the ballot to (if different from residence).

Pick up a ballot to go at a vote center, starting 10 days before Election Day, or at the Elections office starting 29 days before Election Day.

*\*Please note, you can receive at most two (2) replacement ballots. (Elections Code § 14288)*

## I have mail forwarding on, will I receive my ballot to the forwarding address?

By law, election mail cannot be forwarded. If you are away from your registered mailing address during the time ballots are mailed out, you may request to have your ballot sent to a different address. To set up a one-time mailing address, contact the Elections Department by phone, email, mail, or in person.

## **How can I challenge information in the election process?**

There are identified processes where a member of the public can challenge information, for example but not limited to, candidates, measures, recalls, etc., for most instances there is a 10-day review period in which a writ of mandate or an injunction requiring any or all materials to be amended or deleted.

The county elections official shall be named as respondent or real party of interest.

A peremptory writ of mandate or an injunction shall be issued only upon clear and convincing proof that the material in questions is false, misleading, or inconsistent with the election code, and that issuance of the writ or injunction will not substantially interfere with the printing and distribution of official election materials as provided by law.

## **Why do I have more candidates in the voter information pamphlet than what is on my ballot?**

The county voter information pamphlet includes all contests and measures for the June 2, 2026 Election. However, your ballot may not contain every contest or candidate listed. To see which contests apply to you, please refer to your ballot.

## **Why can't I see a candidate statement for a particular candidate?**

### **EI Dorado County Voter Information Pamphlet – Candidate Statements**

Candidate statements are optional. Therefore, the county voter information pamphlet may not include a statement for every candidate. A complete list of candidates will appear on the ballot.

For state legislative offices, candidates must agree to the Proposition 34 voluntary expenditure limits in order to submit and pay for a candidate statement of qualifications. For a list of state candidates who have accepted these voluntary limits, please refer to page 6 of the County Voter Information Guide.

### **State Voter Information Guide – Candidate Statements**

California law provides voluntary spending limits for candidates running for state office who choose to keep their campaign expenses below specified amounts. Candidates for statewide constitutional offices who accept these limits may purchase space for a candidate statement. For more information on spending limits and to see which candidates have accepted them, please refer to page 8 of the State Voter Information Guide.